

Year 7 Parent & Pupil Information Booklet 2026



**WHICKHAM
SCHOOL**

Contents

Introduction from Mr F Turnbull	3
Whickham School Qualities	4
About Whickham School	5
Whickham School 2020-21 Curriculum Summary	6
Curriculum	7
Uniform	16
Cashless Catering: Biometric	18
Free School Meals - Are You Entitled?	18
ParentPay	19
Attendance Matters	20
Scholars Transport Timetables	25
Behaviour Expectation	26
Safeguarding	27
The Achievement Team	28
Tutor Time Activities	29
Whickham Equipment / Starter Packs	30
P.E. Guidelines	31
P.E. Kit Information	31
Class Charts	32
Term Dates	33
School Site Map	34



Dear Parent/Carer,

It gives me great pleasure to welcome you and your family to Whickham School.

We are a school that cares about everyone in our community and aims to ensure that every Whickham pupil develops into a well rounded citizen who is able to make the most of their unique talents and abilities.

Studying at Whickham is an enjoyable and rewarding experience. Our curriculum enables all pupils to develop a breadth of knowledge and a range of skills that prepares them well for their future careers and in life. Academic achievement is important and we are proud of the success our pupils achieve, but being a Whickham pupil is about much more than this. Whickham pupils access a range of exciting experiences that support personal development and are supported in developing the personal qualities that enable them to be people we are proud to know.

We believe that strong and positive relationships with parents and carers are critical in ensuring a partnership is built that supports the success of each pupil. This booklet outlines important information about our school and the expectations we have of each pupil.

I look forward to meeting you and your child.

Yours faithfully,

Mr F Turnbull
Headteacher

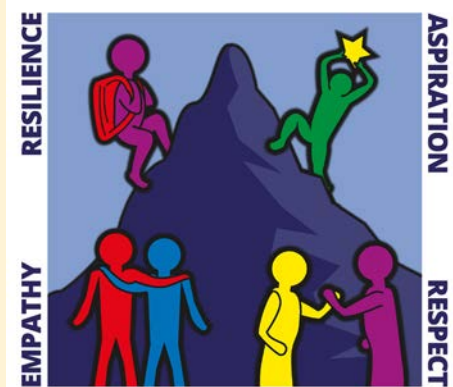


Whickham School Qualities

Mission Statement

Whickham School; a school that ensures all pupils can be the best that they can be.

In achieving this aim we ensure all pupils develop into well rounded citizens who possess the skills, knowledge and qualifications that will enable them realise their full potential. Our curriculum and pupil support services focus upon developing the following qualities:



Aspiration - Whickham pupils set aspirational goals that are ambitious and without limitations.

Respect - Without compromise, Whickham pupils demonstrate respect for themselves, others and their environment.

Resilience - Whickham pupils persevere with challenges, especially when faced with setbacks.

Empathy - Whickham pupils strive to be kind, caring and understanding of each other's feelings and needs.



About Whickham School

The School

Whickham School is a large and successful school in Gateshead. We are oversubscribed with over 1700 pupils including around 350 in the Sixth Form. Standards are high and pupils make significantly stronger than national average progress:

Measure	School results	Gateshead average	England average
Attainment 8 Score	53.0	46.9	45.9
English & Maths 4+ (standard pass)	81%	68%	65%
English & Maths 5+ (strong pass)	60%	50%	45%
English & Maths 7+	20%	not published	not published
Students entering the EBACC	57%	49%	41%
Students achieving EBACC (4+)	43%	36%	26%
EBACC Average points score	4.79	4.22	4.08
Pupils staying in education or employment (after Year 11)	94%	91%	91%

Our Sixth Form is also very successful with students obtaining strong A-level and vocational grades:

A-Level		Vocational	
A*-A	25%	D*	11%
A*-B	53%	D*-D	70%
A*-E	99.8%	D*-P	100%
APS (Av. Points Score)	35.72	APS (Av. Points Score)	33.40

Ofsted

Inspectors last visited the school in January 2025. The school was judged to be good in all categories. Inspectors found that:

'The school has high ambitions for all its pupils. The broad curriculum prepares pupils well for life beyond school. Pupils achieve well at Whickham School. Staff have high expectations of pupils' conduct. Pupils are polite and friendly. Through their actions, they embody the school's values of aspiration, respect, resilience and empathy. The school environment is calm and respectful. Pupils behave very well.'



A copy of the inspection report can be accessed through scanning or clicking on this code.

Each year group is overseen by a Pastoral Leader and pupils will be placed into one of nine pastoral tutor groups in each year group. As far as possible pupils will keep the same tutor each year to help build relationships and ensure pupils feel well supported in school.

The Governing Body

The governing body is enthusiastic and active and they bring a wide range of experiences and skills derived from their diverse employment in commerce, industry and education.

The relationship between the governing body and staff is one of mutual trust and openness. The governing body endeavours to provide support as well as challenge and to become actively involved in all school matters.

Further information about school governance can be found on our website.

School Organisation

The School has been an academy since 2011. The headteacher oversees the daily running of the school supported by a leadership team who meet weekly. Curriculum subjects are overseen by eight faculty leaders who have responsibility for ensuring that the curriculum supports all pupils to make progress.

Whickham School 2025-26

Curriculum Summary

At Whickham School, we aim to provide a broad and engaging curriculum that enables pupils to fulfil their talents and interests, whilst gaining the knowledge and skills needed to succeed in their further studies, training and employment. High quality information and guidance is provided to help pupils navigate their pathways through the courses on offer.

A strong foundation is provided at Key Stage 3 where pupils follow a broad and balanced curriculum comprising the following subjects: English, Mathematics, Science, Modern Languages, Geography, History, RE, Technology, ICT, Art and Design, Music, Religious Studies and PSHCE.

Pupils are allocated to mixed ability tutor groups. Much of the teaching in Key Stage 3 takes place in these groups, although we set by ability in Mathematics from Y7 and pupils are taught in single sex PE groups. Additionally we have smaller groups for design technology.

In Years 10 and 11 pupils follow a two-year programme of GCSE and Vocational subjects. During Year 9 pupils will be supported in choosing their optional subjects for Key Stage 4. Pupils choose from a wide variety of courses across many different subject areas. The majority of pupils carry on with the study of a foreign language (French or German).

The school has a strong SEND (Special Educational Needs & Disabilities) team that provides additional support to encourage academic progress in all key stages.

The breadth of choice continues into the Sixth Form, with large numbers of pupils selecting from over 35 different A Level and vocational courses.

Whickham School is alive with activities that offer pupils the opportunity to broaden their interests and experience:

- Extra-curricular PE including school teams and sports leadership opportunities
- Music tuition (a separate charge applies) – increasing numbers of pupils choose to carry on with individual or small group instrument tuition from primary or choose to take up a new instrument. We cater for band-style instruments as well as classical orchestra instruments.
- Drama and music performance opportunities including an annual school musical, KS3 musical and music concerts.
- A wide variety of educational visits (local, national and overseas) are organised for pupils of all ages.





CURRICULUM

Maths

We are excited for you to join us at Wickham School and hope you are looking forward to starting your first year here. Maths lessons at Wickham are varied and challenging. We build on all the skills you have acquired in Primary School and develop them further through problem solving and reasoning activities, with the aim of making you masters of maths.

Our teachers are passionate mathematicians and we are devoted to making sure you understand why you're doing what you're doing in our maths lessons and why it's important to you in your adult life. We will build your confidence and encourage you to think deeply, making connections between topics. You will have eight lessons of Maths per fortnight and in Year 7 the main topics covered are:-

- Algebra
- Geometry
- Number.

Every month you will have a 'Problem of the Month' lesson. This is where you will work on a longer problem for the whole lesson and be expected to hone in on those problem-solving and reasoning skills in your answers and findings, working independently or in small groups. These lessons are very popular with our current pupils, and we are confident you will enjoy them just as much.

All we require from you is to try your best - be resilient, independent and responsible. In a nutshell; 'be the BEST you can be', and we promise to provide fun lessons, homework and the support you need to allow you to do this!

EXTRA OPPORTUNITIES

- Our brilliant Maths Champion Mr Franklin provides weekly fun activities including a Countdown numbers game, 1% club questions and only connect challenges that you can get involved in during tutor time.
- Our fantastic numeracy coordinator Miss Ledger will boost your maths skills with her numeracy ninjas tutor time activities and her monthly problem on the projector in the atrium; which you will win prizes for if you can complete it!
- Make sure to have a go at the problem solving task that you have been sent as part of your transition activities – this will show you how a 'POM' lesson works and all of the key skills you will need to answer that question.

ENGLISH

Year 7 begins with a short 'Autobiography' unit, an exciting unit where you will reflect on your own journey so far, giving thanks for your family, friends and experiences. It also allows you to learn about other people's journeys, studying their autobiographical work and using this to inspire your own writing.

This develops into the study of your first novel at *Whickham School: Coraline* by Neil Gaiman. This allows you to explore key elements of fantasy, gothic, and supernatural novels, as well as igniting a love of reading and developing those reading skills.

You're then off on a journey around the world in our travel-inspired Descriptive Writing module! During this module, you will develop your ability to write with imagination by mimicking the style of other writers you will have studied – there are lots of opportunities to get creative with language in this module.

Continuing with our journey around the world, we then move on to study Poetry from other cultures. In this module, you will become acquainted with the ways in which poets celebrate culture and diversity through language – you even get the chance to write your own poem.

We finish off the year with our 'Literary Legends' module. The main focus here is Shakespeare's 'A Midsummer Night's Dream', introducing you to the

Comedy genre, as well as igniting a love of Shakespeare. It contains themes of the supernatural, family relationships and love, with a sprinkle of magical mischief for good measure.

This module also features extracts from Dickens' *Oliver Twist* and Robert Louis Stevenson's *Treasure Island* to introduce you to Victorian fiction.

One hour per fortnight is dedicated to Accelerated Reading in the library and this is encouraged at home too. We get a bit competitive here, with classes competing to see who can read the most, and treats for the winning class each term.

EXTRA OPPORTUNITIES

Throughout the year, there will be many opportunities to get involved in extracurricular reading activities. For example, World Book Day sees a fancy-dress competition, literary book hunt and class activities. You can also see other options as part of the Drama schedule which will help to support your English passions and talents.

P.E.

In P.E. we will be building on the fundamental skills that you have developed at Primary school.

During Year 7 this will be delivered through a range of activities such as football, netball, rugby, basketball, gymnastics, dance, athletics and cricket.

Within each of these activities we will look to develop your physical ability so that you have the necessary skills to perform with confidence and enjoyment.

Your aim should be to develop three different multi-abilities to ensure success in PE:

- **Skill** - Pupils will develop their knowledge of a wide variety of different skills and techniques and practice the implementation of these in practice and pressured competitive situations.
- **Awareness** - Pupils will develop their knowledge and understanding of some of the key theoretical concepts associated with regular sports participation.
- **Social** - Pupils will be given the opportunities to work collaboratively with others and develop their ability to evaluate and provide feedback on their own and others' performances.

Hopefully, this will inspire you to attend the various extra-curricular P.E. clubs on offer, inspiring you to value physical activity and the contribution it makes towards leading a healthy, active lifestyle.

EXTRA OPPORTUNITIES

- In P.E. We offer a range of activities for those seeking competitive fixtures against other schools and for those looking to play recreational sport for enjoyment.
- Most of our curriculum-based sports have a school team that you could represent.
- In Year 7 you will also be given the opportunity to represent your tutor group in an inter-house competition in a range of sports.
- We also run an 'Active lunch' recreational programme, where you can play sport with your friends during your lunch break.

Art

We're really excited for you to start your art lessons at Wickham! We have a whole floor of fantastic art rooms right at the top of the school building, and we think you'll love the calm, creative space we've got here.

Don't worry if you're not feeling super confident about your art skills. Our brilliant art teachers are here to help you get better, and we promise you'll enjoy trying out new things. We'll be working on lots of exciting projects throughout the year that will help you improve and learn more about art.

Here's what you can expect:

- We'll explore the work of different artists to help inspire our ideas.
- You'll get to use lots of different materials like pencils, paints, clay, fabrics (for textiles), and even mixed media!
- You'll receive regular feedback in your sketchbook to help you improve your work, where we'll guide you on how to develop, refine, and present your ideas.
- You'll have some homework, which might involve research, drawing, or responding to feedback.
- Don't forget to bring your equipment pack and sketchbook to every lesson! (Both can be ordered from the school).
- You only need to take your sketchbook home if you have homework to do.

EXTRA OPPORTUNITIES

- We'll have an after-school Art Club where we'll make exciting things like Christmas crafts, African drums, and posters on important topics like Cultural Diversity, Anti-Bullying, and Knife Crime.
- If you ever need extra help with your homework or just want to do something creative to relax, you can join us during lunchtimes or at the Art Club after school. We'll always be here to help and have fun with you!

We can't wait to see all the fantastic art you'll create!

Drama

In Year 7 Drama you will start with introductory skills as pupils will arrive from primary school with varying levels of dramatic experience. You will participate in fun group activities to support confidence building with your peers and on stage. You will be working towards being able to completing the following skills:

- **Group work**
Contribution, Directing, Supportive teamwork.
- **Techniques & Conventions**
Skills linked to different styles of Drama for impact on the audience.
- **Voice**
Projecting appropriate voices for a character.

- **Movement**
Using body language to express a character.
- **Character**
Creating roles that are consistent and engaging.
- **Analysis & Evaluation**
Discuss how drama is constructed and judge its effectiveness.

Drama will encourage you to use your artistic creativity and will involve the creation of imagined characters and situations which you will enact within a safe space. You will recreate situations using other perspectives to reach new and exciting conclusions.

EXTRA OPPORTUNITIES

There is a wealth of extra-curricular activities happening each week in the Drama Department for you to get involved with. We have annual whole school productions which have previously included:

The Addams Family, Matilda, High School Musical, Little Shop of Horrors and Legally Blonde.

A Drama club runs once a week which is currently open to all Key Stage 3 pupils on a Friday.

MUSIC

Music is the universal language all around us. It engages and motivates, builds confidence, encourages reflection, boosts emotional development, develops critical engagement, stimulates and inspires us every day. As pupils' progress, they should develop a critical engagement with Music, enabling them to perform, compose and listen to a wide range of musical cultures, genres and traditions from a wide variety of composers and styles of music. By learning to perform individually and in an ensemble setting it helps pupils to grow their self-confidence, creativity and sense of achievement, as well as increasing their cooperation, concentration and communication skills.

At the start of Year 7 pupils will explore the Elements of Music, the building bricks of Music through our three Key skills of Performing, Composing and Listening. Pupils will study Impressionism using a wide range of percussion instruments as well as exploring Fanfares in the Spring Term and finally studying Keyboard and Harmony in the Summer Term. Pupils will experience a wide range of instruments including Keyboard, percussion, boomwhackers, ukulele and guitar.

We offer instrumental lessons from Gateshead Music Service on a variety of instruments including singing. For further information please contact Mr P Noble pnoble@whickhamschool.org

EXTRA OPPORTUNITIES

Music is a subject where the pupils can participate with School Productions, The Whickham Ensemble, Rock Band, Whickham Singer and more. We have opportunities to perform throughout the year including Open Mic Night, Christmas and Spring Concerts, School Production and Battle of the Bands. Keep an eye on the bulletin for all the information you need!

History

Throughout KS3, you will build the skills and knowledge to deepen your understanding of this amazing subject. History at Whickham broadly follows a chronological approach. From the Anglo-Saxons through to the upheavals of the 20th Century, you will study many fascinating periods and events. History in Year 7 will begin by looking at the question, 'How dark were the dark ages?' We will explore the period following the collapse of Roman control through to the arrival of the Normans in 1066. From here we will look at how the Normans gained control of England, and go on to examine how various groups in society experienced the Medieval period in different ways.

In term two you will explore the Crusades answering the question, 'Did people go on Crusades simply to get into heaven?' Much of history is focused around debates and as such, each half term will look at a different enquiry question.

As well as looking at key periods in history, it is also useful to look at how much things have changed over time. To do this, we also focus on one key area and track this over a long period of time. In Year 7, you will focus on change over time through studying public health from the Romans through to the 20th Century. Finally, in term three we will examine the Early Modern period with a particular emphasis on the War of the Roses.

EXTRA OPPORTUNITIES

History is a subject where you can explore far and wide. Our homework builds up your vocabulary, provides opportunities to read more deeply and also focus on independent research. At the end of Year 7, we also undertake an annual trip to Warkworth spending time in the castle.



Geography at Whichham aims to give you the tools to explain the world around you. In Year 7 this will take a broadly thematic approach where a series of stand-alone topics will be studied and then brought together at the end of Year 7 then throughout Years 8 and 9 to explain the geography of places, such as the Middle East, the Democratic Republic of Congo, Haiti and Russia.

The first theme in Year 7 looks at place and location and how they are represented through maps. To do this we will firstly look at representations of places on the Earth and how they have changed through time. We will then focus upon how places are located on maps and the detail that maps can illustrate about a place. This will be followed by our second theme exploring water. This will explore the value of water to societies through the study of rivers followed by an examination of the processes and features that occur along the coastline of the UK.

After this, our third theme focuses on development and asks why a gap between the most and least developed countries exists? Lessons will then evaluate attempts by countries and organisations to close the gap. The fourth and final theme in Year 7 will ask whether Malthus, a cleric and economist writing at the end of the 19th Century, was right to suggest that population growth would outstrip resources available and ultimately decline through famine, disease and pestilence. We will finish Year 7 by introducing the pupils to our first regional study - the Middle East. This will tie all the topics studied to date together by exploring the physical and human geography of the region and interactions that take place between them. It will also explore some contemporary issues in the region and beyond, such as sportswashing and conflict.

Geography



EXTRA OPPORTUNITIES

There is Geography in everything that each of us does every day. Extra-curricular activities in Geography will reflect this. We run a Geography club open to Year 7 that will focus upon pupil activism for climate change and other environmental issues, such as palm oil. There will also be opportunities to explore topics in greater detail by listening to podcasts, watching documentaries and reading books that are linked to the topics being studied in Year 7.

Finally, and most importantly, Geography is also about applying what is learnt in the classroom to the world outside. There will be opportunities for fieldwork and research of places linked to topics being studied to show that the world is a 'messier' place than neat theories explored in the classroom suggest.

Religious Education

In Year 7 we will explore lots of different aspects of the world around us - we will look at the ideas of people who follow the main religions in the world and those who have no faith, through moral issues and big questions. We definitely ask more questions than we have answers!

We will start off exploring the idea of a worldview, and asking whether or not you can live in the world without a worldview? We will explore our own worldviews, those of other people and how these worldviews have been formed. We will explore whether religion is dying,

growing, or whether it is just changing.

We will then, over the next two terms, explore what is meant by good and bad within Christianity, Judaism, Islam and Buddhism. This will build on our work in the first term about different worldviews. We will then look at places of worship and what we can learn about both beliefs and practices from these fascinating places.

EXTRA OPPORTUNITIES

There are religious and moral issues all around us. You will have plenty of time to discuss these issues in tutor time.

There is also a KS3 Philosophy and Ethics club in which you can discuss any issues that interest you. The topics are chosen by the pupils who attend. We always look at both points of view. It's great for both building up skills to help your written work but also if you like getting stuck into a good argument.



In Year 7 Computing you will learn new skills and also build on the skills you have acquired at primary school. You will work on a range of different topics which will improve your confidence in the subject. These topics, delivered with real world examples, have an aim to prepare you for when you leave school. You will work independently and in groups on learning the following topics:

- Being safe online.
- Working remotely on cloud applications.
- Programming multiple different languages including Scratch or Small basic.
- Spreadsheet creation and understanding.
- Creating websites for a cause.

The homework you complete will be contributing towards your iDEA bronze award, which is an industry recognised award which helps you stand out from the crowd.

iDEA - (Inspiring Digital Enterprise Award). The aim of this is to develop digital, enterprise and employability skills for free. Feel free to read up about this at: www.idea.org.uk/about

The more our world relies on technology, the more important it is that you are introduced to and are confident in key topic areas to ensure you are prepared for the future.

Computing

EXTRA OPPORTUNITIES

Activities include code clubs, where you will fine tune your coding skills to work independently on tasks/games. One website we use is <https://code.org/>. Why not give it a go so you have a head start for September?

DESIGN TECHNOLOGY

Y7 DT Food Technology overview:

In Year 7 Food Technology you will be introduced to the methods, equipment and appliances that will allow you to plan and produce food dishes safely and hygienically in the kitchen. You will develop your confidence in the following practical areas:

- **Using the oven - using the hob, main oven and top oven for boiling, baking and grilling safely**
- **Using small appliances - using hand blenders for a variety of hot and cold dishes.**
- **Using knives - using knives to develop precise and accurate cutting, chopping and garnishing.**

You will also investigate why the food we eat is important for our bodies and the world around us. You will look at what influences our food choices by exploring the principles of nutrition for a healthy diet whilst considering the impact of food miles and seasonality on the environment.

Food Technology will enable you to apply principles of healthy eating to your own diet and the diet of others when cooking a range of foods at school and at home. You will learn how to use your creativity to make food exciting and imaginative when feeding yourself and others!

Y7 DT Product Design overview:

In Year 7 Product Design and engineering you will start to build up your confidence and skills in a workshop environment across a range of projects. In Year 7 there is a focus on plastics and how these impact the environment and how you can cut and shape them. You will learn how to use both hand tools and machines in a safe manner while creating a clock based from a well known design movement, developing your communication skills as well as working as part of a team by making a bridge in engineering.

You will develop your presentation skills by drawing design ideas from one point perspective and isometric while adding tone and shade. Pupils will learn the whole design process from start to finish- analysing a brief, understanding the wants and needs of a client, product specification, product analysis, initial designs, design development and evaluation.



FRENCH

Modern Foreign Languages

We hope you are excited and ready to learn a new language at Whickham School!

All pupils study either French or German here and there is no need to worry if you have studied a different language in primary school as you will build vocabulary and will be able to take part in spontaneous conversations very quickly!

Year 7 Modern Foreign Languages begins with the basics of greetings, introductions and exchanging information before moving on to a variety of topics such as Describing People, Family, Pets, School, House & Local Area, Food & Drink, Hobbies & Free Time and a Cultural Project. For each topic, you will learn key grammar structures and a range of vocabulary which will allow you to build fluency as well as learning about the culture and way of life in countries where German or French is spoken.

Each half term you will cover all four skills which are: Listening, Reading, Speaking and Writing. This means that you feel confident communicating in different ways. As well as these four fundamental skills, you will also improve your level of vocabulary and understanding of grammar using online platforms such as Quizlet, Kerboodle and Languages Online.

Learning about the culture of French and German speaking countries is very important here at Whickham School and is something that is covered

in lessons throughout the year including European Day of Languages in September, a francophone or German Christmas, Gastronomy and famous French and German speaking people. At the end of Year 7, we will study a French or German film and will complete a variety of activities based on it. Learning a new language is all about having the confidence to make mistakes and giving things a go. We are looking forward to meeting you in September and hearing you practise your French or German!

EXTRA OPPORTUNITIES

For extra curricular activities we run a KS3 languages club every week at lunchtime, where you can put your skills to the test in Blooket contests, try another language or visit a primary school to teach younger pupils. We also have a foreign language film club where pupils have enjoyed getting to know different cultures and languages through film. Past events have included careers events or French or German cafés, where you can put your knowledge of food and drink to good use by ordering some authentic French and German cuisine!

As well as this, you could take part in visits to Paris or Berlin. There will also be regular competitions throughout the year to see who has learned the most vocabulary.

GERMAN



SCIENCE

In Year 7 Science, you will build on your scientific knowledge gained at primary school.

The biggest difference is that we have labs where you will get the opportunity to do some exciting experiments!

At the start of the year, you will be taught how to think like a scientist and how to work safely in a laboratory, which is extremely important.

You will follow a course that has been planned to build your skills as you move through topics and into future years. You will also have access to Educake, an online revision platform, through which some of your homework will be set and where you will be able to set your own quizzes and develop your independent learning skills.

In Year 7 you will learn about different aspects of Chemistry, Physics and Biology.

You will start with "Working Scientifically", which gets you to think like a scientist and develops your skills of collecting and analysing data, designing experiments

and interpreting and evaluating results. In Physics you will initially learn about force and energy moving onto sound later in the year. In Chemistry you will learn about particles, atoms and elements, acids and alkalis and some chemical reactions. In Biology you will go on to study about cells, the structure and function of body systems and reproduction. What is most important to us at Wickham School is that you enjoy science, are successful in learning scientific ideas and that you always try your best!

OPTIONAL EXTRAS

We have a STEM club whose focus varies from year to year. This year's pupils have enjoyed deepening their understanding of astronomy. Next year's focus is to be confirmed and will be shared in September.

Whickham School Uniform

ALL PUPILS	ITEM OF UNIFORM	EXTRA INFORMATION
Blazer	Whickham School grey blazer with Whickham School badge	Must be worn at all times including when travelling to and from school
Shirt	Plain white traditional school shirt. Long or short sleeves.	Tucked in at all times
Tie	Clip on year group colour striped tie	Clipped onto the top button. Ties must not be graffitied or vandalised in any way
Trousers	Plain black tailored trousers	No "skinny" trousers No jeans No leggings
Skirt	Whickham School tartan skirt	Approved style only No rolling of skirt
Tights	Plain black	
Socks	Black knee length socks may be worn	If pupils choose to wear socks and not tights, they must be black knee length socks.
Shoes	Plain black formal shoes	No branded footwear for example; <ul style="list-style-type: none"> • Trainer type shoes • Converse / Vans / sand shoe styles • Designer shoes such as Vivienne Westwood / Ted Baker style shoes Wynsor World of shoes have an approved list of available shoes
School bag	Rucksack / large shoulder bag	Must be large enough to carry PE kit and A4 folders No handbags
Make up	No makeup should be worn	No fake lashes No lash extensions No acrylic nails or nail/gel polish/ varnish
Jewellery	No jewellery should be worn	No jewellery including clear, plastic jewellery retainers
Hair	Hair cuts must be smart and natural in colour	No lines / carvings / cat scratches / extreme shaved areas No two tone colours
Coats	Coats must not display inappropriate messages or offensive imagery.	No body warmers / gilet's No denim / leather jackets No hoodies / tracksuit tops

Uniform & PE Kit



1. Please order all school uniforms online where possible.

School uniforms may be ordered online via our website, at www.michaelsehgal.co.uk.

2. Order early! Especially for New Starters' uniforms!

Demand for sizes can be unpredictable from year to year, so our best advice is to order new starter uniforms early, so that your child feels comfortable and well-prepared for starting their new school. Do not wait till August, when spot shortages can take several weeks to replenish. Orders will be processed on a first come, first served basis and we guarantee that orders placed by the 31st July deadline, will be fulfilled in time for the new term.

3. Get Free Delivery on online orders.

Free delivery is available on orders above £40, so order now (before the 31st of July) and get free tracked delivery to your home or workplace. We also offer a free monthly delivery to school at the end of each month, during term time. Just select free delivery to school at the checkout and note the collection date highlighted in pink.

4. Our customer services team is here to help!

Sizing guides are available on our website, indicating the most popular sizes, per age group and our customer services team can help you with your order, if it's the first time you are ordering. Call us for assistance on **0191 230 2320** or, email us at sales@michaelsehgal.co.uk. You can also find the answers to most frequently asked questions at: www.michaelsehgal.co.uk/faqs/.

5. We will keep you informed!

At every stage, including ordering, processing and dispatch you will receive notifications from us to advise you of the status of your order. We aim to deliver all school uniforms safely and promptly.

**Michael Sehgal and Son,
Unit 17 Airport, Industrial Estate,
Kingston Park Newcastle, NE3 2EF.
Tel: 0191 230 2320
www.michaelsehgal.co.uk**



Cashless Catering: Biometric

The system works in the following way:

- Pupils are enrolled onto the system.
- Enrolling means the computer software will take a digital image of your child's finger and turn it into numbers (not the actual finger print image) which are stored on the school server.
- Every time your child's finger image is re-read a number is generated. This is unique to your child.
- Pupils will pay in advance for their lunches, parents can pay for school meals using a credit or debit card online using ParentPay, meaning that pupils don't need to bring money into school. This is the preferred method. Anyone without a ParentPay account can be provided with a barcode so that the account can be topped up at shops that have the PayPoint facility.
- Pupils are identified at the till from their finger image, and the cost of their meal taken off their account.
- Your child will not need to remember to bring anything with them to the dining hall.
- It can be cheaper because pupils will never need to replace a lost or damaged card.
- Parents can pay for school meals using a credit or debit card online using [ParentPay](#), meaning that pupils don't need to bring money into school.

As we hold personal data about your child we must provide you with a Fair Processing Notice. We are meeting the requirements of the Data Protection Act because:

1. **The finger image data will only be used by the school and not passed to anyone else.**
2. **The data is safe and secure on our school server.**
3. **When your child leaves Wickham School the data will be destroyed.**

Free School Meals - Are You Entitled?

How can my children receive school meals?

Your child, or children, may qualify for free school meals if you are able to meet the following criteria:

You or your partner must have a child or children for whom you receive child benefit who is in full time education, under 19 years of age and who attends a local authority school or sixth form.

You and your partner must be in receipt of one of the following benefits:

- **Income Support.**
- **Income Based Job Seekers Allowance (JSA - IB).**
- **Guarantee Pension Credit.**
- **Employment and Support Allowance (ESA Income Related).**
- **Child Tax Credit - but not Working Tax Credit - and your income for Tax Credit purposes must be less than £16,190.00 (details are shown on your Tax Credit award notice).**
- **Working Tax Credit run-on - paid for 4 weeks after you stop qualifying for Working Tax Credit.**
- **Universal Credit.**

If this applies to you, please pick up a Free School Meals Application Form from the School Office or apply online at <https://www.gateshead.gov.uk/article/7433/Free-school-meals>.

ParentPay - Our online Payment Service



Whickham School is striving to become a cashless school and therefore we are pleased to inform you that the school has the facility to accept online payments for school meals, trips and other school activities using a secure website called Parentpay. Parentpay allows the benefit to be able to pay online using your credit or debit card.

Parentpay is easy-to-use and will offer you the freedom to make online payments whenever and wherever you like, 24 hours a day, 7 days a week- safe in the knowledge that the technology used is of the highest internet security available and that funds will reach school safely.

Parents will have a secure online account, activated using a unique username and password. Making a payment using your credit or debit card is straightforward and no card details are stored on the system or are accessible by the school or Parentpay.

When you make a payment, an email confirmation is sent to you, giving you reassurance that the transaction has been successful and Parentpay will hold an electronic record of all online payments for you to view at a later date.

Within Parentpay you will be able to access the extended facilities which allow parents to view the

catering menu offers week by week, and to also view what your child has purchased each day.

You will also be able to view trip payments and balances and set reminders if you are paying in instalments for any of your purchases. In addition, Parentpay offers you the ability to set automated email/SMS reminders ensuring you never miss a payment.

An account activation username and password will be sent out to you from the school before your son/daughter starts in September. You will be prompted to change these and to keep your new username and password safe and secure. Full details on how to activate your account and start making payments will be included.

Please look out for our new Online Shop. The shop facility can be accessed - without logging in - from the "Parents" tab on the school's website. Items available to purchase from the Online Shop will include starter packs and ties.

We thank you in advance for your support in using Parentpay.



Attendance Matters

Whickham School offers an exceptional learning environment where pupils are happy and want to attend.

- Attendance is one of the most important elements in what makes a successful pupil.
- We actively celebrate excellent attendance with prizes and certificates. Whickham pupils should be proud of their achievements and understand the significance attendance has on their further education and future employment choices.

At Whickham School we expect our pupils to attend at **least 98%** of the time. This equates to no more than 4 days of absence across an academic year.

- If your child is sick, you have a legal requirement to inform school on each day of absence. You can call the school's absence line on **0191 496 0026** to speak to a member of staff or leave a message clearly stating the reason for absence. Parents/carers can also report their child absent using the google form found on ClassCharts
- Just reporting that your child as 'poorly' or 'under the weather' is not enough, please let us know the reason/condition that is preventing school attendance.
- If you fail to inform the school, we are legally required to make contact with you or any other named contact.
- Wherever possible, all non-emergency appointments should be made out of school hours. Where appointments are made during school hours, there is an expectation that your child attends school before and after the appointment to minimise lost learning.

All appointments must be substantiated by evidence in order to be authorised

- Examples of medical evidence include: Doctor's notes, prescriptions, labels from prescribed medication obtained during the period of absence, appointment letters/cards and referral letters.
- Without these documents, we are unable to authorise absences.
- As a school we are required to follow legal processes and have statutory duties and expectations from the Local Authority. Legal proceedings can continue across academic years, so if attendance is poor and unauthorised at the end of the year, monitoring and referrals will continue into the new academic year in September.
- We work very hard with our pupils and families to avoid legal proceedings and communication is the key to a successful relationship with school.
- We look forward to working together to ensure that your child succeeds and thrives at Whickham School.



A copy of the Attendance Guide for Parents & Carers can be accessed through scanning or clicking on this code.



Our strategy to ensure attendance expectations are met fall into five stages.

Whilst we will always include cumulative attendance percentages on all correspondence with parents/ carers, our strategy is based on the number of days of absence in relation to the maximum achievable attendance in an academic year.

ATTENDANCE LADDER



100% ATTENDANCE

Every chance of outstanding success

WITHIN EXPECTATIONS

99.5-98% ATTENDANCE

Great chance of success

- You must report any absences by 9AM by calling the absence line or via ClassCharts.
- Please try to make medical & dental appointments out of school hours. Evidence will be required for absences due to appointments

97.9%- 95.1% ATTENDANCE

BELOW EXPECTATIONS- CATCH UP REQUIRED

- Additional work set for lost learning via the Achievement Team
- Monitoring procedures followed (see flow chart)

OVER 4 DAYS
OVER 20 LESSONS

95% ATTENDANCE

CONTINUES TO BE BELOW EXPECTATIONS- WORRYING, CHANCES OF FALLING BEHIND IMPACTING ON SUCCESS

Monitoring procedures followed (see flow chart)

9.5 DAYS
45 LESSONS

92.1- 94.9% ATTENDANCE

SERIOUSLY BELOW EXPECTATIONS- LESS LIKELY TO SUCCEED & HARDER TO MAKE PROGRESS

Monitoring procedures followed (see flow chart)

15 DAYS
70 LESSONS

90% OR BELOW ATTENDANCE

CRITICAL- LIKELY TO HAVE A DETRIMENTAL EFFECT ON ACHEIVEMENT & LIFE CHANCES
At this stage pupils have reached Persistent Absentee Status

We'll assess the interventions put in place during previous stage & where necessary pursue LEGAL INTERVENTION

Penalty Notices are a minimum of £60[1] per parent/carer. £80

19 DAYS
95 LESSONS

*Medical evidence can include any of the following: Doctor's notes, prescriptions, Labels from prescribed medication obtained during the period of absence, appointment letters/cards, referral letters.

Should your child become too poorly to attend school, please ensure that you call the school absence line by 9am; you must call every day of your child's absence. Please take a moment to read the following guide to common illnesses and the anticipated impact they may have on your child's attendance:

CONJUNCTIVITIS	Consult GP or Pharmacy. Try not to touch your eye to avoid spread. Continue to attend school.
GLANDULAR FEVER HAND, FOOT & MOUTH HEAD LICE SLAPPED CHEEK THREADWORMS TONSILLITIS RINGWORM COMMON COLD	Consult GP or Pharmacy. Continue to attend school and practice good hygiene.
PERIOD PAINS	Continue to attend school.
CHICKEN POX	Stay home until all spots have formed a scab (this can take up to 5 days after spots appear)
FLU	Consult GP or Pharmacy. Often confused for common cold.
MEASLES	Consult GP. Return to school 4 days after rash appears.
MUMPS	Consult GP. Return to school 4 days after swelling appears.
WHOOPIING COUGH	Consult GP. Return to school 5 days after start of antibiotics or 21 days after start of illness.
IMPETIGO	Consult GP. Return to school when scabs are dry or 48hrs after start of antibiotics.
SCABIES	Consult GP. Return to school after first treatment.
SCARLET FEVER	Consult GP. Return to school 24hrs after start of antibiotics.
SHINGLES	Consult GP. Only stay off if the rash is weeping and cannot be covered.
DIARRHOEA OR VOMITING	Consult GP if symptoms persist after 48 hours. Only take time off when symptoms are persistent. We do not have a fixed 48 hour rule for your child to return to school if they have had an isolated incident of sickness or diarrhoea. If your child is feeling well, please send them to school.

See www.patient.co.uk for further information on each of these conditions.

Leave Of Absence Requests (LOA)

We review LOA requests on a case by case basis, but as a general rule we do not approve leave of absence, unless there are exceptional circumstances.

Forms can be found on our website or online form and sent to the Attendance Officer.

Response to requests will be sent via Text Message.

Unauthorised absences can result in Legal Intervention and the possible issue of a 'fixed penalty notice' of £160 per child / per parent carer which is reduced to £80 if paid within 21 days.

The school is extremely thorough when investigating prolonged absences. We trust our parents to be honest with us and inform us of planned absences and holidays, no matter the potential outcome.

LOA requests should be submitted at least 4 weeks in advance to allow pupils to plan around missed work.

The average academic year is 190 days long, please make every day count. Wherever possible please use weekends and holidays for everything else.



Punctuality

Punctuality is an essential life skill which transfers into adulthood. We expect our pupils to be in school on time, every day.

The first bell rings at 08:30 allowing 5 minutes of movement time before pupils should be at their classrooms and ready to take their seats at 08:35. It is expected that all pupils are inside the school gates before 08:30. Arriving late results in lost learning.

Lateness to lessons

Pupils who are late to school in the morning will receive a breaktime detention (failure to attend will result in a detention after school, 3.15 - 4pm)
If pupils are late for 15 minutes in a week or more to lessons, this will also result in an after school detention (3.15 - 4pm).

If pupils receive 3 late to lesson marks in a week this will result in a BIS twilight (3.15 - 4.15pm).

MINUTES LATE LOST

LEARNING DAYS LOST

5 minutes each day	3 days per year
10 minutes each day	6.5 days per year
15 minutes each day	10 days per year
20 minutes each day	13 days per year
30 minutes each day	19 days per year

Home Visits

Unannounced home visits can be made to check on the wellbeing of a pupil for one of the following reasons:

- **No contact for the absence of a pupil**
- **School refusal**
- **Poor Attendance**
- **Long term illness support**
- **Safeguarding concerns**

Home visits are part of our continued support of pupils and their families.

Frequently Asked Questions

Parent: My child is just having an 'off day' so I'm not sending him/her in'

School: Having sporadic days off school can quickly add up. We always want to encourage pupils to attend, sometimes getting out of bed, showering and putting on a uniform is all it takes to feel a little better. Coming to school on days when you don't really feel like it can make a big difference. We will always send pupils home if they are genuinely unwell.

Parent: My child was sick over the weekend, should I keep him/her at home?

School: As stated in the common illness table we don't have a fixed 48hr rule for diarrhoea and sickness. If your child has had an isolated incident and is feeling better, please send them to school.

Parent: I have received an attendance letter and I do not like the tone.

School: We're sorry you feel that way but we have to state facts and legal information to make things clear. Each correspondence forms part of a possible legal intervention and must leave no ambiguity.

Parent: I can't provide medical evidence because it's impossible to get a GP appointment.

School: Wherever possible, we will request medical evidence. If your child is off for 4 consecutive days, we will expect a GP visit. If your child has had several shorter absences for the same condition, we will also expect a GP visit. Medical evidence makes the difference between authorised absence and unauthorised absence. We do not pursue legal intervention where medical evidence is provided. It's as important for you as it is for us.

Parent: I do not like being challenged regarding my child's absences and reserve the right to make the decision as to whether my child is well enough to attend school.

School: We are sorry you feel that way but please bear in mind that our team are simply doing their jobs in complying with school rules and statutory guidance. It's not personal and ultimately we can offer a multitude of support to help your child's attendance improve and safeguard their future success. Remember, we care.

Parent: Why do I have to tell you the details when my child is unwell?

School: Firstly, your conversation with us is confidential. We do not share details with the wider school community but will need to know exactly what's wrong so that we can offer the right level of support and guidance. We care for every aspect of your child's health and wellbeing from migraines to mental health. Good communication will help us to help you.

Parent: Why do I need to call school every day when my child is absent?

School: Put simply, we have a duty of care and cannot assume that your child is at home. A daily call to us will give both school and home the confidence of knowing that your child is safe.

Parent: I cannot take your calls or make meetings due to work commitments.

School: We will endeavour to work around your schedule in the interest of your child. Conversations and face to face meetings are important in building relationships. Family dynamics are unique and so are the interventions we can put in place to help your child to overcome barriers to attendance.

Parent: My child is anxious and their attendance has dropped, but you want to meet me to discuss this matter. You know why they can't attend, what is the point of this meeting?

School: Our meetings are intended to be supportive. We have a team of mental health first aiders in school along with a dedicated counsellor. If you are seeking external help it's important to send in your appointment letters and stay in touch.

Scholars Transport Timetables September 2026-27*

Nexus contract a number of bus services to provide school transport to and from Wickham School.

- Nexus timetables for Sept 2026-276 can be viewed via the link below. However, this timetable is provisional and is subject to change.
- Please note that different routes operate in the morning and afternoon.

For the bus timetable please scan or click on the link below



* Bus timetables can be subject to change.

BEHAVIOURAL EXPECTATIONS



Uniform and Appearance

- Whickham School blazer
- White shirt (tucked in)
- Whickham School skirt or trousers
- Year group tie
- Black polishable shoes
- Must have equipment pack / pencil case
- No trainers
- No jewellery
- No false nails / No coloured nail varnish
- No fake lashes or lash extensions
- No extreme hair styles, unnatural or two tone colours.

FOLLOW STAFF INSTRUCTIONS AT ALL TIMES



Mobile Phones & Smart Watches must be switched off, placed in pouches and put in bags.

No earphones in School.

CHEWING GUM IS BANNED

Litter and chewing gum have a significant detrimental impact on the school site.

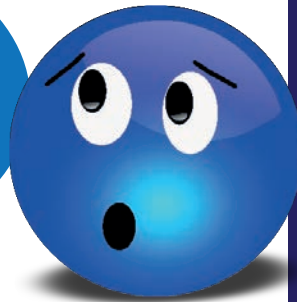
If you drop litter or are found with chewing gum you will receive an

• AUTOMATIC DETENTION •

Our Safeguarding Children Process

1

I have a safeguarding concern relating to a child, parent or member of staff



2

Contact one of the people below if it is about a child or parent and make a record of this on CPOMS. If it refers to a member of staff, please contact Mr F Turnbull turnbullf@whickhamschool.org

3

Inform a member of the Safeguarding Team

Designated Safeguarding Lead



Mrs S Maher
Deputy Headteacher - Pastoral

Designated Safeguarding Deputy



Mr M Phillipson
Assistant Headteacher

Designated Safeguarding Deputy



Miss S Tumelty
Assistant Headteacher

Designated Safeguarding Deputy



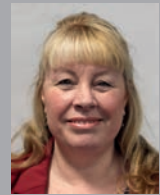
Mr J McCaughey
Senior Pastoral Leader

Designated Safeguarding Deputy



Mrs A Hall
Senior Pastoral Leader

Designated Safeguarding Deputy



Miss James
Safeguarding and Family Support Worker

4

Advice will be given on the next steps



This may or may not involve actions to be taken by the referrer

5

A plan will be put in place



This may or may not involve a referral to Social Care

6

Feedback to the referrer

Where appropriate the Designated Safeguarding Lead will give feedback. In some incidences the case details may be confidential.

Other useful contacts:

Children's Social Care
Tel: 0191 433 2653
Out of hours:
0191 477 0844

Police
Tel: 101
(non-emergency)
Tel: 999
(emergency)

NSPCC
Tel: 0808 800 5000



THE ACHIEVEMENT TEAM

A warm welcome from the Whickham School Achievement Team!

Who are we?

Mr Wheatley - Senior Deputy Headteacher, Pupil Achievement

Mr Abbott - Associate Senior Leader, KS4 Achievement

Mrs Gainey - Associate Senior Leader, KS3 Achievement

Mr Berry – Tutoring and intervention lead

Mrs Hughes – KS3 Achievement officer

Miss Envy – Y11 Achievement officer

Mrs Ross - KS5 Achievement officer and Careers Leader

Our Ethos

We believe that every pupil can and should achieve their full potential. We realise that pupils will need support to ensure they do so, and we are here to remove barriers to learning so that pupils can be the best they can be. Our aim is to ensure that all pupils attend school, get the most out of lessons and complete their homework, which research shows results in pupils making good progress and achieving strong academic outcomes.

What do we do?

We undertake a number of projects and interventions designed to support pupils in making the best progress they can and improve their attitudes to learning. Our work is centred around 3 main values:

• Attendance • Lessons • Homework

We work closely with the Pastoral Team to ensure attendance is strong. If pupils are not in school, they cannot attend lessons. To support pupil learning and homework completion we undertake the following interventions:

- **Academic mentoring** - We mentor a wide range of pupils who need support in a specific subject or general help in improving their all-round learning habits. This ranges from short drop ins to longer one to one sessions.

- **Tutor time interventions** - We coordinate interventions across a wide range of subjects that give pupils booster sessions to improve their progress across the curriculum. This also includes a highly successful reading intervention for KS3 pupils.
- **Homework hubs** - These run every lunchtime for all year groups and after school each evening. While anyone can attend after school, pupils who fall behind with homework may be directed to attend until they catch up.
- **Revision** - We coordinate the after-school revision programme for Y11 pupils. We also regularly update the "How to Revise" website, the first stop for all of your revision tips and advice. The website has useful hints and tips for all pupils.
- **After school support** - We coordinate various after school interventions designed to support pupils when they need it. This could be one to one tuition, small group tuition or engaging with online learning platforms.
- **Enrichment opportunities** - We have links with various higher education providers, including Newcastle & Northumbria Universities. They provide mentors and workshops for our pupils that are designed to support them in their journey to employment or higher education. Our careers programme is extensive, we ensure that pupils in all year groups have interactions with employers each year. We run a careers and further education fair each year and invite various guest speakers into school to enrich the learning experience of our pupils. We support pupils in year 10 and 12 to take part in work experience.
- **IT support** - If required, we are able to provide laptops. This ensures that all pupils can access online resources and homework.

Mrs Hughes – ext. 335

Miss Envy – ext. 224

Mrs Ross - ext. 252

We look forward to seeing you in September!

Keep working hard.

The Achievement Team

Tutor Time Activities

Our daily tutorial session is an important part of the day. It helps to ensure that pupils form a strong relationship with their tutor who helps to support them as they grow and mature. The time is used productively to ensure that pupils are settled and prepared for the day ahead. Pupils also engage in a variety of different activities which will facilitate the development of key skills and qualities. These include;

- Contributing to the school community and environment through weekly circle time sessions that focus upon topical events and important issues that impact upon school.
- A weekly session that focuses on Personal, Social, Health and Citizenship Education (PSHCE) and compliments the programme delivered during curriculum time.

The Tutor Time PSHCE programme will focus upon the following topic areas across KS3 to ensure pupils are provided with a broad and balanced experience;

- the development of the political system of democratic government in the United Kingdom, including the roles of citizens, Parliament and the monarch
- the operation of Parliament, including voting and elections, and the role of political parties
- the precious liberties enjoyed by the citizens of the United Kingdom
- the nature of rules and laws and the justice system, including the role of the police and the operation of courts and tribunals
- the roles played by public institutions and voluntary groups in society, and the ways in which citizens work together to improve their communities, including opportunities to participate in school-based activities
- the functions and uses of money, the importance and practice of budgeting, and managing risk





Whickham Equipment

Being properly equipped for lessons supports pupils to be successful. At Whickham we expect pupils to come to school ready to learn. This means each day they need a bag with any books they will need. A pencil case or equipment pack with all of the items listed below and should they have PE, their sports kit.

We expect pupils to maintain the basic contents of their equipment pack and would ask that you take an active role in regularly checking they are fully prepared for each school day. Replacement equipment and pencil cases can be purchased online via Parent Pay or at our stationery shop on a lunchtime within school. Equipment packs or pencil cases must be clear as per examination guidelines.



Equipment Pack:

- Pens (Black and Green)
- Pencil
- Green highlighter
- Ruler
- Protractor
- Eraser
- Scientific calculator
- Clear pencil case
- Post-its
- Flashcards
- Whiteboard pen & cleaning cloth
- Coloured pencils

Starter Packs

When a pupil enrolls at Whickham School they are expected to purchase a starter pack. This pack contains all of the items required to fully engage in their learning at school.

Starter Pack contents:

- School tie
- Apron for DT lessons
- A sketchbook for Art
- Tote Bag
- Equipment pack (items listed left)

The starter packs can be purchased through the On-line shop.

We also recommend:

Some form of protective wallet or file divider to support pupils in looking after their homework and other documents. An expanding file with dividers for each subject is ideal and relatively cheap (usually available for under £5):



P.E. Guidelines

- Full P.E. kits should be worn at all times
- If a pupil does not have their kit they will be given some to wear
- Long hair must be tied up
- If a pupil is injured they must have a note
- Injured pupils will still be expected to wear kit and will be given a different role



P.E. Kit

Compulsory Items

- School sports shirt
- School sports socks
- Plain leggings OR shorts OR tracksuit bottoms in school colours (navy blue)
- Sports trainers
- Mouthguard
- Shinpads

Optional Items

- School training top
- Plain black base layer
- Water bottle



Protection

It is compulsory that pupils wear shinpads and mouthguards whilst participating in certain sports e.g. rugby, hockey, football etc.

School Teams

It is advised that pupils who represent school teams purchase a school training top to wear for fixtures and competitions and bring a water bottle.





You can use ClassCharts to track your child's behaviour and homework as well as viewing their timetable. This daily feedback to parents replaces the annual written reports. You can also view announcements from our school.

If you have more than one child, you can access ClassCharts information about your children from a single, centralised parent account.

Class Charts for parents can be accessed through the ClassCharts website www.classcharts.com or mobile app (available for both Apple and Android phones).

You will receive a Parent code from us and this code is used to set up your ClassCharts account.

We set homework for pupils through ClassCharts and there is an expectation that pupils use ClassCharts regularly in order to organise and manage their homework. Pupils will get their own separate account.



Term Dates

Autumn Term

Start of Term	Half Term	Last day of Term
Tuesday 1st September 2026	26th October - 30th October 2026	Friday 18th December 2026

Spring Term

Start of Term	Half Term	Last day of Term
Monday 4th January 2027	15th - 19th February 2027	Thursday 25th March 2027

Summer Term

Start of Term	Half Term	Last day of Term
Monday 12th April 2027	1st - 4th June 2027 (Bank Holiday 31st May)	Friday 16th July 2027

The following dates are INSET days (staff training days) and pupils do not need to attend:

- Tuesday 1st September 2026 (Students in Y12 and Y13 may be required to attend for part of the day)
- Friday 2nd October 2026 (TBC)

In addition to the above dates school will be closed to pupils on:

- Monday 31st May 2027 – Bank Holiday

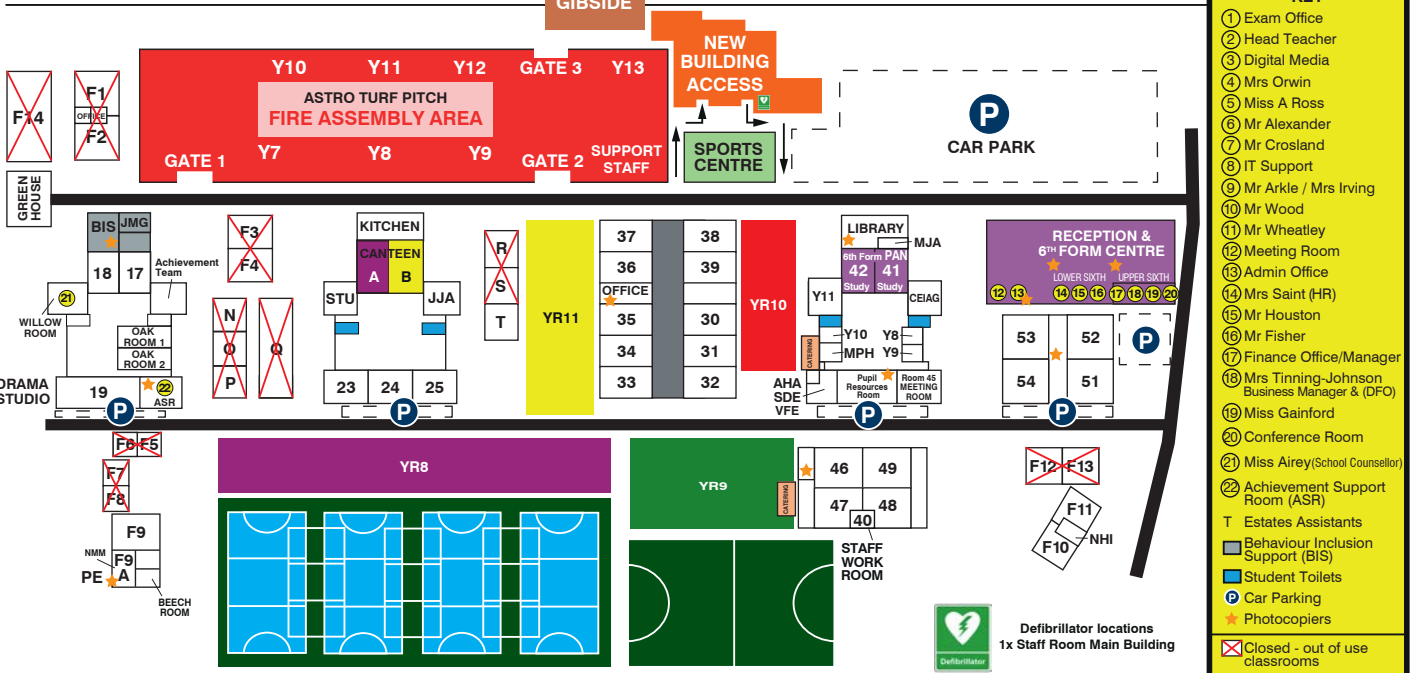
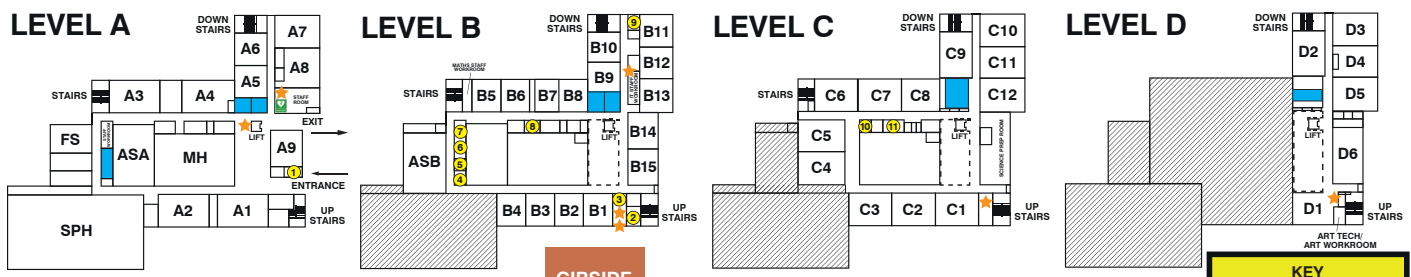
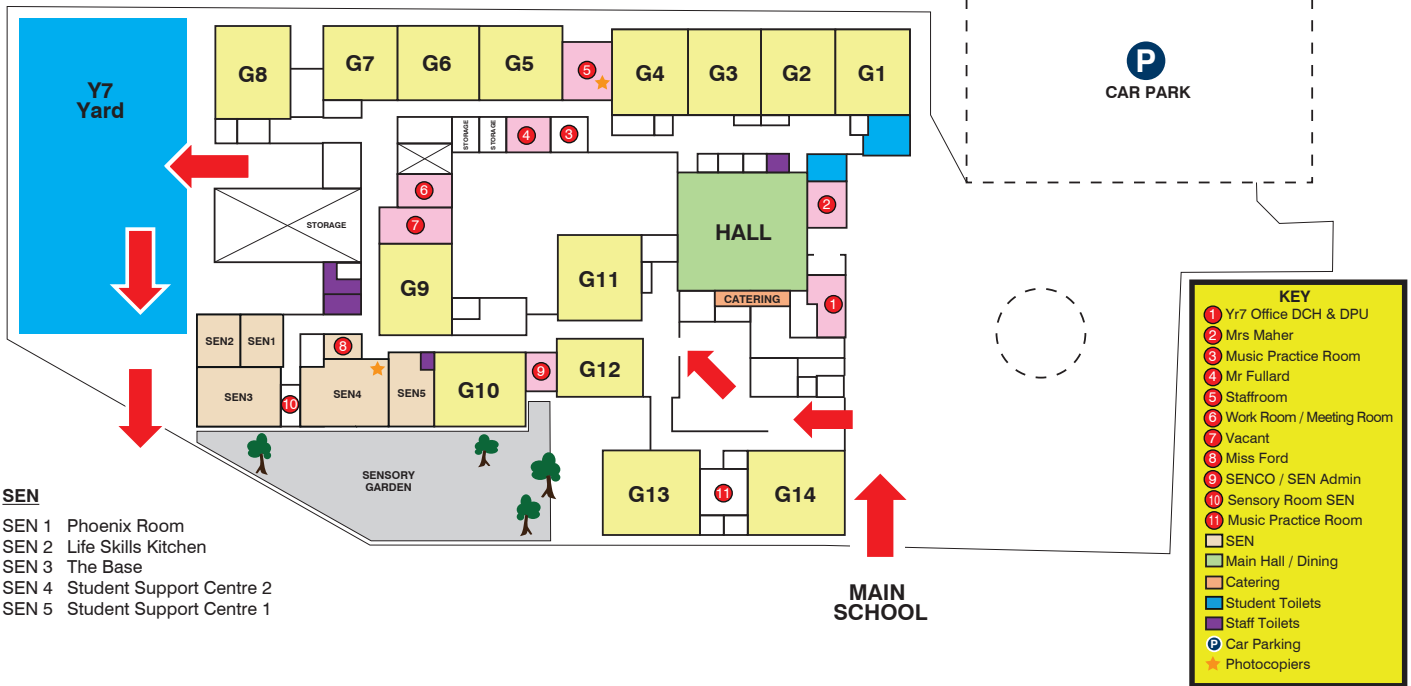
Timings of the School Day

8.30.....	Warning Bell	11.30.....	Period 3
8.35.....	Registration	12.30.....	Lunch
9.00.....	Movement time	13.05.....	Movement time
9.05.....	Period 1	13.10.....	Period 4
10.05.....	Movement time	14.10.....	Movement time
10.10.....	Period 2	14.15.....	Period 5
11.10.....	Break	15.15.....	End of School Day
11.25.....	Movement time		Every second Tuesday school will finish at 2.10pm



Whickham School site map

G1, G2, G3, G4 Geography
 G5, G6, G7, G8, G11 History
 G9, G10, G12 Religious Studies
 G13, G14 Music







WHICKHAM SCHOOL

Burnthouse Lane
Whickham
Newcastle upon Tyne
NE16 5AR
T: 0191 4960026
www.whickhamschool.org