



WHICKHAM SCHOOL



Welcome to our new Y7 parents / carers



Timings of the school day

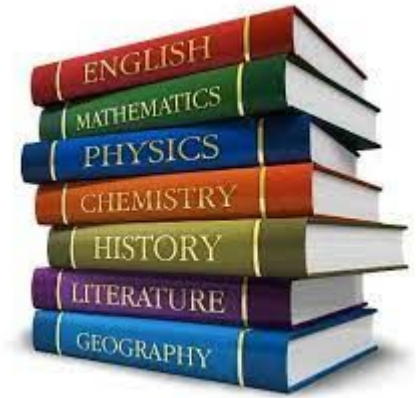
8:35	Registration
9:00	Movement
9:05	Period 1
10:05	Movement
10:10	Period 2
11:10	Break
11:25	Movement
11:30	Period 3
12:30	Lunch
13:05	Movement
13:08	Staff at classroom door to greet pupils
13:10	Period 4
14:10	Movement
14:15	Period 5
15:15	End of day

Please note that students will finish at 14.10 on alternate Tuesdays.

Students are expected to be in registration by 8:35am



The curriculum



- Pupils will be taught in their tutor groups for the following subjects each week:

- Art
- Computing
- Drama
- English
- French or German
- Geography
- History
- Music
- Science
- RS
- Tutorial

- Pupils will be taught in smaller groups for the following subjects:
 - PE (single gender groups)
 - Design and Food Technology
- Pupils will be taught in ability based groups for:
 - Mathematics



MFL

Language tutor groups:

German:

7JHA

7KHA

7SME

7KMI

7ETH

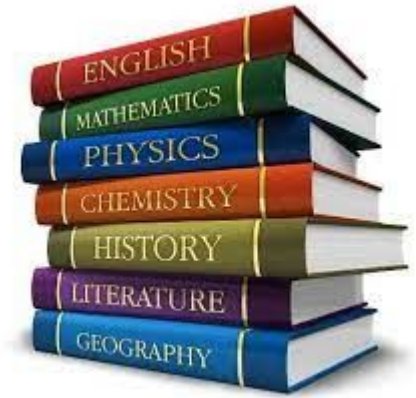
French:

7JTE

7LPE

7CJ

7GHU



**WHICKHAM
SCHOOL**

Getting around the school site

- Always cited as a big worry but is rarely a big problem.
- Pupils have a limited number of rooms across two weeks to find out where to go - it is usually the same room for each subject
- Pupils are issued with a site map, and their tutor will check they know where to go each day
- Staff will also be available at the end of break & lunch to help pupils get to their lesson.

	Reg	1	2	3	4	5
1Mon	Tutorial 52	Maths B2	Science C11	Geography G3	French 49	History G5
1Tue	Tutorial 52	Drama 19	Art D2	PE	English 33	Maths B2
1Wed	Tutorial 52	French 49	Art D2	Science C11	RS G12	Maths B2
1Thu	Tutorial 52	English 33	PE	Science C11	DT A3	DT A3
1Fri	Tutorial 52	French 49	Maths B2	Music G14	History G5	Science C11

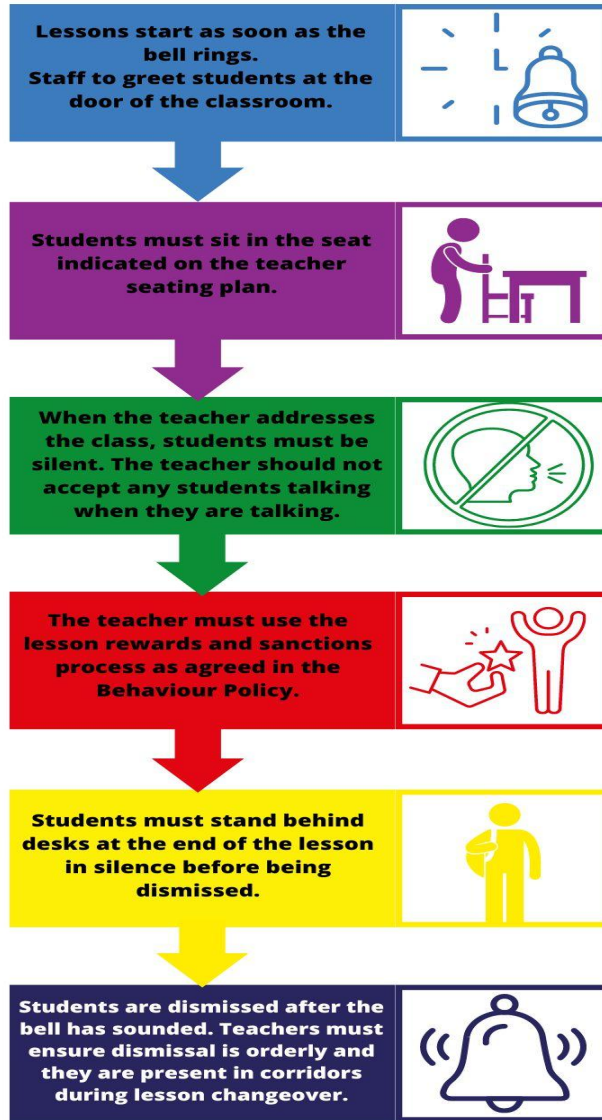


Tutor Time

- Arrive by 8.35am, stand behind desks ready for tutor time
- Check equipment (pencil case, reading book, school bag)
- Check uniform
- Assemblies (one day per week)
- Tutor activities (citizenship, reading, and numeracy)



LESSON ROUTINES



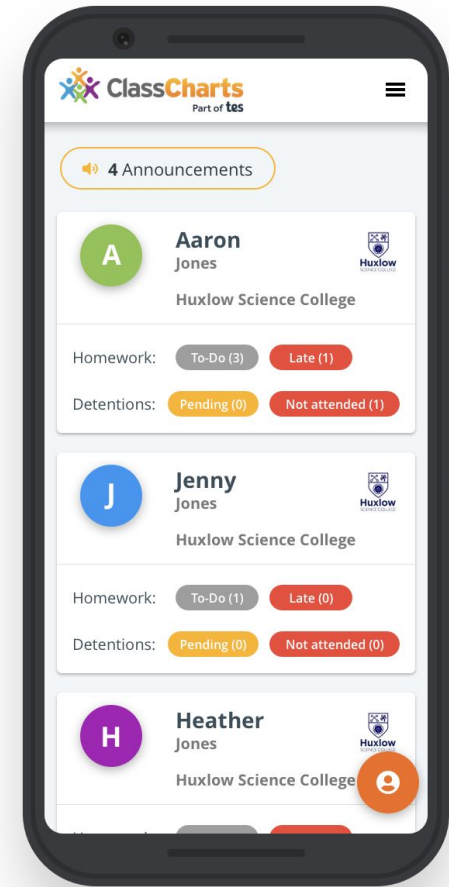
BE THE BEST YOU CAN BE



ClassCharts

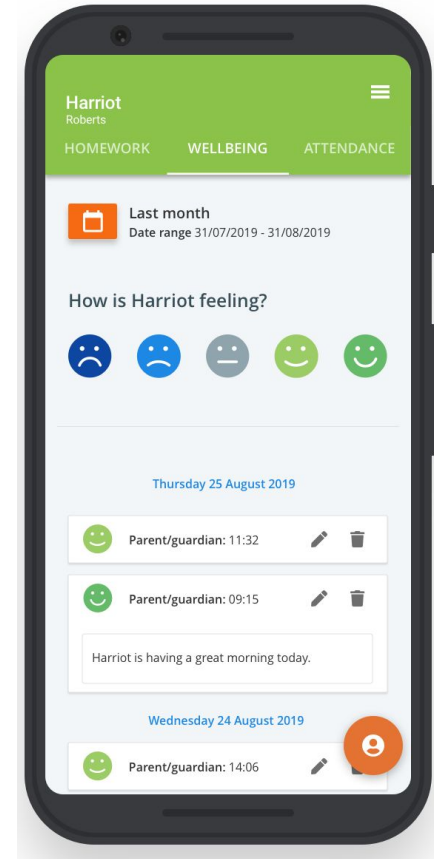
We expect all parents/carers to use ClassCharts to:

- View timetable, homework, detentions and after school support. Checking your child's homework is vital to assist them with their learning
- Announcements from class teachers - key reminders for pupils & parents
- Daily and weekly lesson feedback to parents (replaces annual written reports).



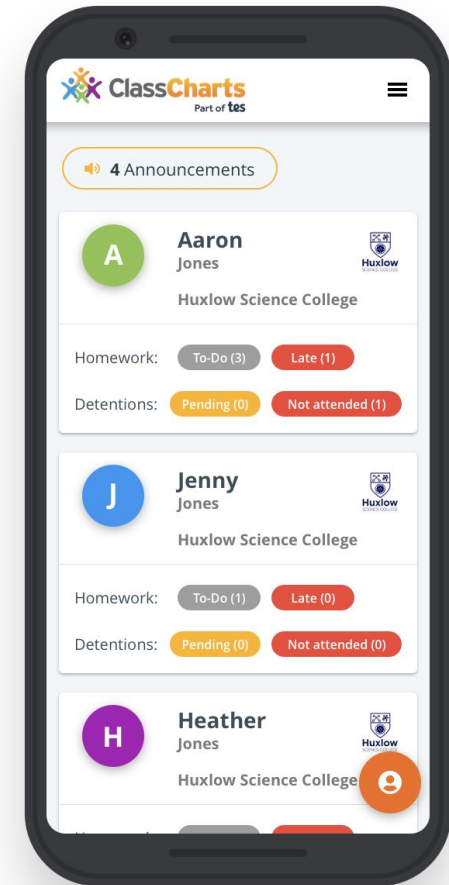
ClassCharts - Wellbeing

- Pupils can use this app to tell us how your child is feeling. This can be used for positive and negative issues
- This will be monitored by Pastoral staff and your child's tutor. The Achievement Team monitor academic issues and the Pastoral Team monitor wellbeing concerns
- If you have concerns that are sensitive they should be communicated directly to the pastoral leader



ClassCharts

- There are instructions to show you how we use ClassCharts on our website:
 - Go to Whickham school website > Welcome Year 6



Homework

KS3 Subject	Frequency	Average time per HW
English & Maths	Once per week	45 minutes
Science & MFL	Once per week	30 minutes
History, Geography, Art & Technology	Once per fortnight	45 minutes
Music, IT, RS & Drama	Once per fortnight	20-30 minutes



Homework

- We know pupils worry about how they will manage this, and we will always seek to support students who make their best endeavours to complete homework
- We do not set year 7 homework detentions in the first half term but we will be in touch if there are issues with completion
- We have a staffed homework hub before school, at lunchtimes and after school each day
- Pupils get at least 5 days to complete tasks.



Homework

- Pupils will be expected to complete homework each week. There will be a settling in period in HT1 where less homework will be set
- There is a significant evidence base to suggest that pupils who complete regular, high quality homework, make up to 5 months additional progress per year



Uniform



Incorrect footwear



Correct footwear



Lockers



- We recommend that all pupils “rent” a locker during their time at Whickham School.
- Pupils need to carry around a number of books and equipment, lockers are excellent for storing these during the school day.
- Pupils are not allowed to bring phones/watches into exam rooms in years 10-13 and this provides somewhere they can store items during exams.
- There is a one off fee of £5 which is refunded when pupils return their locker & key in good condition
- Information will be sent out in September



Academic transition

- Secondary schools receive your child's KS2 National Curriculum test results (Reading, Maths, GVPS scaled scores)
- These give us a good initial indication of achievement at the end of primary. Where scores are below 100 (and in particular in the 80-90 range) we will look to provide additional support to ensure pupils can access the secondary curriculum (e.g. numeracy or literacy skills)
- We also complete a low stakes CAT test (cognitive abilities test) early in September to give us more information about each child.



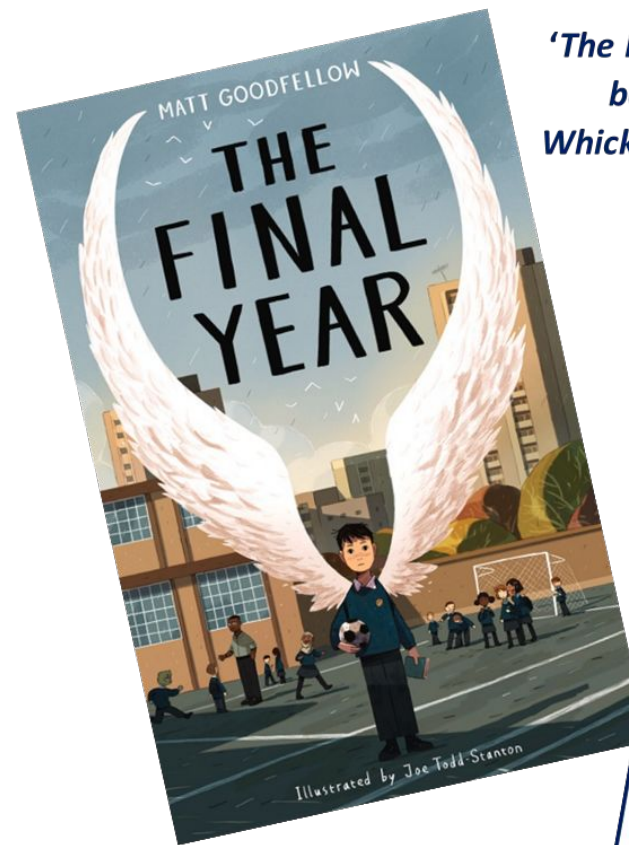
Cognitive Ability Test

- Used by a large number of secondary schools
- Students sit a series of simple reasoning tests on computer
- Tasks involve thinking about shapes and patterns (Non-Verbal Reasoning), words (Verbal Reasoning), numbers (Quantitative Reasoning) and some questions are answered by mentally generating and transforming visual images (Spatial Ability).
- Your child's tutor will discuss the results on the meet the tutor evening



Reading

- We regularly assess the reading age for each child to ensure teachers take this into account.
- Where there is a significant difference between your child's chronological age and their reading age, we would look to explore this further and offer support
- Pupils will have a focused reading lesson based in the library each fortnight, read twice per week in tutor and all subjects set reading homework/activities in lessons



'The Final Year' is just the beginning of your Whickham School Reading Journey.



**WHICKHAM
SCHOOL**

Year 7 - Key information



Check list:

- Purchase school uniform
- Purchase starter pack
- Purchase PE kit
- Ensure your child reads their English book and completes the English task
- Complete Maths task and Pastoral booklet
- Appropriate school bag
- Set up ParentPay and ClassCharts

Key dates:

- Wed 4th Sept 2024: Year 7 first day at Whickham School
- May (TBC) : Y7 Parents/Carers Evening



Bus information



- Scholars 4.15pm service going to Sunnyside, Burnopfield, Sherburn Towers, High Field, High Spennings, Derwent St and Blackhall Mill (may change)

This is so pupils can stay at school to attend clubs.

- Please check the school website for information on scholars services

Go to Year 6 > Bus services on the school website



Drop off / pick up

- Please avoid parking outside the school on the double yellow lines
- Parents are not allowed to enter the school site to collect pupils and gates will be locked for cars at the end of the school day
- We encourage all parents to drop off/collect pupils away from the school
- We have covered bicycle parking facilities



Any questions



If there are any questions of a personal nature please complete the contact sheet and a member of the pastoral team will be in touch.



Before you leave

Please make sure you have
signed the attendance list

