



SIXTH FORM PROSPECTUS 2023





100%
OF STUDENTS IN 2022 WENT ONTO
HIGHER EDUCATION, EMPLOYMENT
OR TRAINING

AVERAGE
A LEVEL GRADE
B



59%
OF A LEVEL
GRADES WERE
A* - B

100%
VOCATIONAL PASS RATE
99.7%
A LEVEL PASS RATE



87%
OF VOCATIONAL
GRADES WERE
DISTINCTION
OR HIGHER



WELCOME



FRASER TURNBULL | HEAD TEACHER

Our Sixth Form is an extraordinary place to study. Students achieve strong A level and Level 3 BTEC results whilst also developing the personal qualities that enable them to succeed in higher education and employment.

We are very proud to offer students an experience that is one of the best in the region. Whickham Sixth Form combines access to a wide range of A level and Level 3 BTEC subjects with high quality teaching and learning that has supported students in achieving outstanding results over many years. Students can continue to study subjects they have enjoyed and achieved success in during Year 11 or experience new subjects that can open a wide range of career pathways.

Students access a range of high quality destinations at the end of their time in the Sixth Form. Most students go onto university and staff are highly experienced in supporting this process. Students access a range of exciting courses all over the country, including Oxford and Cambridge. The Sixth Form team is also increasingly supporting students who move directly into

employment and a range of high profile local and national businesses recruit directly from the school.

Academic success is important and we are proud of the success our students achieve, but the Whickham Sixth Form experience is about much more than this. Students have experiences and develop qualities that will serve them well for the rest of their lives.

Finally, students enjoy the use of a state of the art Sixth Form Centre that is equipped to support study. This provides a range of facilities including IT access, study resources and a Starbucks cafe, ensuring students have a base when they are not in lessons.

Whatever your goals we will help you achieve them.

I wish you the very best for your future success.

HEAD OF SIXTH FORM



MISS S TUMELTY | HEAD OF SIXTH FORM

There is an array of opportunities and challenges facing students when deciding to continue their education beyond 16 years or entering the world of work. Ensuring all students make the right choice is essential, as it allows them to be the best they can be.

The breadth of curriculum offer at Whickham is something we are all very proud of as we endeavour to support students in selecting the right route and subject mix for them. We offer a wide range of both A-Level and BTEC Courses, some of which can be taken as a double or triple qualification as well as the single.

Whickham is a very caring Sixth Form that caters for the needs of all learners, be it in the curriculum offered, the pastoral support available or the additional enrichment opportunities. There is a big emphasis on enrichment opportunities as they help students transition to adulthood by developing skills such as self-confidence whilst also supporting the local community. We have very high expectations of all of our students. They are role models for students across the school who aspire to one day be where they are.

We expect students to support the rest of the school and in doing so further develop skills to progress on to university and employment.

Whickham Sixth Form has a fantastic pastoral and academic structure that provides you with the tools needed to achieve. Sixth Form will be one of the most enjoyable and important times of your life. With great reward comes challenge, this challenge will build your resilience and pave the way for your chosen career path.

We look forward to seeing you in September.

Wishing you good luck in your summer examinations.

FACILITIES



The sixth form is housed in a purpose built state of the art building.

THE SILENT STUDY AREA

The silent study area is one of the most used resources in the Sixth Form building. It was specifically requested by students and is well used. It houses a large amount of open plan personal study space, as well as 33 computers for study use. The study area is open daily from 7am to 7pm and is well used after school. Study facilities are also open to students during school holidays.

THE SIXTH FORM CAFETERIA

The Cafeteria serves a wide range of hot and cold food and drink. Following consultation with students it was redesigned in 2020 and now also serves Starbucks coffee. The Cafeteria is open from 8.30am to 2.30pm serving students during the school day.



SIXTH FORM FACILITIES

The Sixth Form areas house all of the sixth form facilities:

- Offices where you can find the Head of Sixth Form and Heads of Year
- Sixth Form Reception
- Silent Study Areas
- Sixth Form Cafeteria
- Sixth Form Computer Suite
- Student Support Office
- Social Area

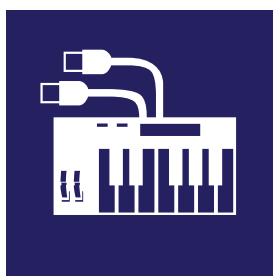
ENRICHMENT & DIVERSITY

Whickham School aims to be very much at the heart of the community and our large sixth form plays a full and active part in helping achieve this.



DUKE OF EDINBURGH AWARD

Every year a large number of Sixth Form students complete the Duke of Edinburgh award either at Bronze, Silver or Gold level. The award is run at school and all expeditions/training is organised through the school.



SCHOOL BAND

The School Band always has a strong Sixth Form presence as do the various school productions, which include Sixth Form musicians, actors/actresses, dancers and the back stage crew.



CHARITY WEEK

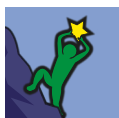
Every year a full week of activities takes place in order to raise funds for a charity nominated and selected by the Year 12 students. Highlights of the week include; 'Strictly Comes to Whickham', 'Teacher Bushtucker', 'Teacher Masked Singer' and the wonderful 'Variety Show' in which students from Years 7 - 13 perform. Over the last 5 years students have raised in excess of £60,000.

PROUDLY SUPPORTING



CHARITY WEEK 2022 - 23





ASPIRATION

Whickham students set aspirational goals that are ambitious and without limitations.



RESPECT

Without compromise, Whickham students demonstrate respect for themselves, others and their environment.



RESILIENCE

Whickham students persevere with challenges, especially when faced with setbacks.



EMPATHY

Whickham students strive to be kind, caring and understanding of each other's feelings and needs.



WORLD CHALLENGE

World Challenge is designed to develop students' leadership qualities and independence.

They travel to remote locations to trek and complete a community project. Past expeditions have been to Namibia, Mexico, India, Morocco, Bolivia, Tanzania and Borneo, including the 2022 expedition to Nepal where students undertook a community project.



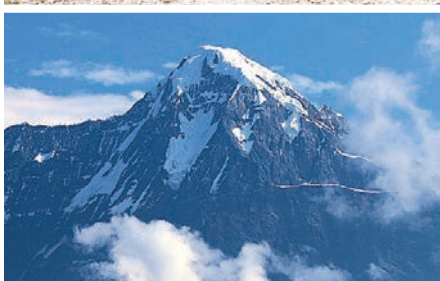
SPORTS LEADERSHIP

At Whickham students have the opportunity to develop leadership skills through working with primary aged students. Sports leaders undertake roles such as coaching and officiating. The students plan and deliver various sporting events throughout the two year course.



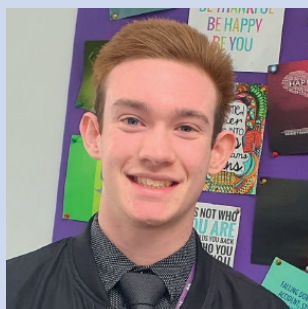
DIVERSITY WEEK

At Whickham we are really lucky to be part of a school community where you are able to be who you want to be without being judged by others. This value had been emulated through our school Rainbow society. We also enjoy opportunities to explore how diverse people and cultures are worldwide.



A VIEW FROM THE HEAD BOY AND HEAD GIRL

Our Head Boy and Head Girl are appointed from Easter of year 12 to Easter of year 13. Throughout their term of office they are responsible for representing the school and its students both within the school and the local community, as well as being head of the student voice.



THEO | HEAD BOY

Whickham Sixth Form offers a wide range of opportunities. It offers a broad range of subjects, allowing each student to take on courses which will benefit them and their future aspirations. Students also get the benefit of having independent study times built into their timetable, allowing them to have more say over how they manage their time. It gives students the ability to study when they wish, whilst also allowing them to enjoy all of the benefits which come with our Sixth Form.

There are also many opportunities to develop important skills, which will help you in many situations later in life. There are always many opportunities to get involved with a variety of different activities; one of the first events which happens in the school year is charity week, run by the year 12 students. This is an amazing opportunity for you to get involved and raise money for a charity of your choosing, put on some great events and develop the important life skills which will be really beneficial.



JESS | HEAD GIRL

Throughout my time at Whickham Sixth Form, I have felt continuously supported and encouraged to embrace every opportunity to develop both academically and personally. Topical study skills and citizenship sessions allow us to develop organisation, time-management and problem-solving skills as well as resilience, leadership and an awareness of current affairs. We are strongly encouraged to take part in the wide range of enrichment opportunities available to us.

As sixth formers at Whickham, we are treated with respect as young adults and we are given the opportunity to take on leadership roles such as in the Student Leadership Team, where you can have an impact on the whole school community. This, along with the passion and care of the subject teachers and sixth form team, makes for a truly enjoyable and memorable experience at Whickham. Overall, Whickham Sixth Form is an environment which celebrates diversity and offers a wide range of opportunities to develop skills and experiences that will be essential for later life. It is a place where you can truly thrive.

2022 LEAVERS: WHERE THEY ARE NOW?

Lola -
A* Biology,
A* Chemistry,
A* Mathematics,
A* German

Biological Sciences at
Sheffield University



Sophie -
Di* Di* Di* BTEC
Health & Social Care

Nursing at
Northumbria
University



Lucy -
A* Chemistry,
A* Further
Mathematics,
A* Mathematics

Mathematics at
University of Bristol



Katie -
A* English Literature,
A* German,
A Mathematics,
A* EPQ

Italian & English
Literature at Edinburgh
University

Grace -
A* Sociology,
A Business,
A English Language,
A* EPQ

Law at Newcastle
University



Jessica -
A* Business,
A* English Literature,
A* History & A EPQ

Primary Education at
Sunderland University



Jessica -
A* Economics,
A* Business,
A German

Marketing at the
University of York



Aaron -
A Mathematics,
A PE,
A Physics,
B EPQ

Aerospace Engineering
at Sheffield University

Mikey -
A* History,
A Media Studies,
B English Language,
C EPQ

Film & TV Production
at Sheffield Hallam



Kitty -
A* English Literature,
A History,
A Economics,
C French

French & International
Relations at University
of London Institute
in Paris



CAREERS

CAREERS GUIDANCE

At Whickham Sixth Form we pride ourselves on the excellent guidance all students get ahead of applying to university, apprenticeships or employment. In 2022, we had 100% of our students progressing onto employment, higher education or training. Of which 70% progressed to university and over half of those are now attending a Russell Group university. As the demand for apprenticeships and employment grows we continue to improve our provision to meet the needs of the labour market. We have been particularly successful this year as we have supported students in obtaining apprenticeships and employment. We also have some fantastic degree apprenticeships with; Gateshead Council, Home Group and the NHS.

STUDENT GUIDELINES

ATTENDANCE AND PUNCTUALITY

Attendance and punctuality are vital if success is to be achieved on Sixth Form courses. Punctuality to tutorial time and lessons is fundamental and homework and coursework is required to be completed on time. Failure to produce work can lead to modules being repeated.

THE PASTORAL PROGRAMME

The Sixth Form programme concentrates on areas which have not been fully covered in the Lower School. Study skills and time management are dealt with early in year 12 and stress management is covered in detail prior to examinations. A lot of time is spent on one-to-one reviews. Year 13 sees a full programme of advice and guidance for higher education, including UCAS form completion, careers interviews and advice on grants and loans.

ASSEMBLIES

Sixth Form assemblies happen on a weekly basis. Covering an array of topics including sex and relationships, personal safety and British values.

RELIGIOUS EDUCATION

The School has a statutory obligation to deliver Religious Education in the Sixth Form. This is done through offering Religious Education A level, through elements of study in Sociology, through tutor-led activities as part of the PSHCE curriculum and through assemblies.

Parents have a statutory right to withdraw their child from Religious Education in the Sixth Form. To do so please write to your son/daughter's Head of Year.





CODE OF DRESS

Sixth Form students wear smart business like attire mirroring that of staff. Standards of dress are an important part of the culture of Whickham. Students are expected to regard Sixth Form dress requirements in a positive manner.

MALES

- Formal/smart shirt and tie
- Formal/smart trousers
- Formal shoes (not trainers or plimsolls)
- Hoodies are not permitted
- Sixth Form lanyard

FEMALES

- Formal/smart shirt or blouse (no low cut tops or cropped tops)
- Formal/smart trousers or skirt which has no pattern, of a suitable length
- Formal shoes (not trainers or plimsolls)
- Hoodies are not permitted
- Sixth Form lanyard

GUIDANCE AND SUPPORT

CURRICULUM GUIDANCE

Support and guidance is offered even before students join the Sixth Form. In November we hold a number of guidance presentations and assemblies for our year 11 students and parents. This is followed up by more in-depth individual meetings with senior members of staff. These enable our students and parents to discuss possible options and future aspirations.

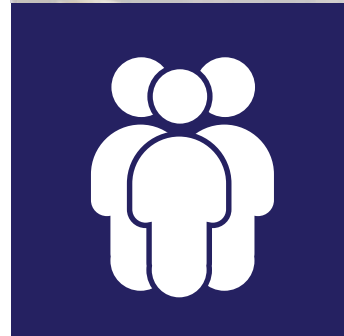
TRANSITION

We have a comprehensive transition programme. This begins straight after the GCSE examinations in July where prospective sixth formers meet for two days of induction. Students have the opportunity to experience some year 12 lessons. Students also attend a buffet lunch and have the opportunity to talk to some current year 12 students.

Once term starts students undertake a structured induction course:

This is where students get to know their tutor and tutor group much better. We also work with students to help ensure a successful transition from year 11 to year 12 by looking at the study and independent learning skills required to be successful. Students will also start planning for their "Charity Week".

There is also an activity around the local area in friendship groups. This really starts to build student relationships and it is always a day mentioned as a highlight of students time in Sixth Form.



NEW TO WHICKHAM SCHOOL

Starting a new school can be a daunting experience. Each year we have a number of students from Gateshead and Newcastle schools who choose to come to Whickham School for their Sixth Form studies. They all settle in quickly and achieve outstanding results. Many of these students apply to Whickham because of the wide range of A level subjects and BTEC courses available, as well as all the varied enrichment opportunities that are available to our students throughout the two years.



Name: Jacob

Subjects: A-level Physics, A-level Chemistry, A-level Mathematics and Extended Project.

"I have greatly benefited from my time studying at Whickham School Sixth Form, due to the enthusiasm from staff to support me in my studies and encourage me to pursue extra curricular activities for my subjects, eg. Athena space camp and the charity week committee. I have received informative lessons from teachers who are experienced in their fields and have been supported in pursuit of valuable work experience, to support future university studies, by the school's careers advisor."

WHICKHAM SIX

The six characteristics of a successful learner...



ONE Be Here

Ensure you attend Sixth Form and attend on time.



TWO Be Prepared

Always arrive to Sixth Form equipped with the resources and mindset to learn.



THREE Be Well

Keep yourself physically and mentally well and seek support if you feel unwell.



FOUR Be Engaged

Engage in lessons and in the extra opportunities on offer at Whickham Sixth Form.



FIVE Be Inspired

Make sure you always push yourself to be the best you can be.



SIX Be Inspiring

You are a role model to younger students. Take opportunities to help them develop into successful young adults.

EXCELLENCE IN SPORT

Part of our Sports College legacy means that at Whickham we go the extra mile to help develop talented sports stars and sports leaders.

Both our academic (A-Level) and vocational (BTEC Sport single and double) programmes provide support and progression to the next generation of sports stars and leaders. Additional opportunities include level 2 and level 3 sports leaders' Awards, the prestigious National Young Ambassadors programme, Duke of Edinburgh (Bronze & Gold) and World Challenge expeditions.

SUPPORT FOR ELITE COMPETITORS

We provide many of our talented and elite sports people with:

- An individual mentoring and coaching programme
- Flexible time to attend regional and national events
- Opportunities to access advanced coaching programmes
- Personal & leadership development opportunities



RORY

I study chemistry, biology and BTEC acting in Sixth Form and I really enjoyed all aspects of each subject. Even though I do not do any sort of sporting A-Level/BTEC, I still try to take part in the amazing extra curricula such as basketball, hockey and trampolining. After year 13 I would like to go to university to study forensic science, in hope of having a career in criminology or sport in the future.

Sports leadership is a choice in Whickham Sixth Form, you have the opportunity to lead primary school events, gaining skills that can be applied to any situation. Sports leadership is a popular enrichment option that Whickham School do particularly well, providing leadership experiences and qualifications that stand out from the crowd.

Start your journey at Whickham Sixth Form

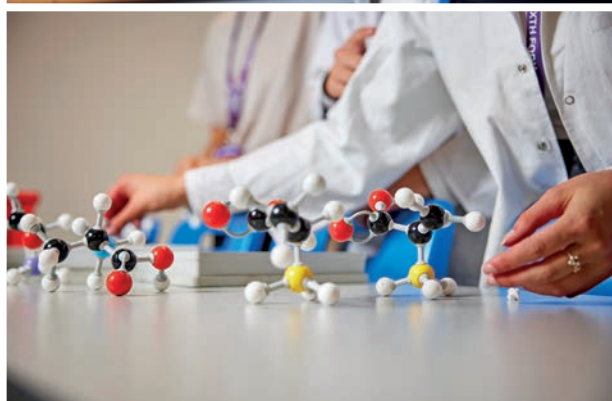
Applications open Monday 5th December 2022

INTERNAL APPLICANTS

If you are currently studying at Whickham School you will receive a one-to-one interview as well as gaining further information through assemblies, tutor time and IAG. You will complete an application form as part of this process.

EXTERNAL APPLICANTS

If you are currently studying at another school you will need to complete an application form (available on the website) and email it to us so we can send you details of sixth form events and arrange for you to come and look around and discuss your course options in a one-to-one interview with Miss Tumelty (Head of Sixth Form).





CONTACT US

Whickham School
Burnthouse Lane,
Whickham
Newcastle upon Tyne
NE16 5AR

T: 0191 496 0026

E: sixthform@whickhamschool.org

 [@WhickhamSchool](https://twitter.com/WhickhamSchool)

 [@whickham](https://www.facebook.com/whickham)

www.whickhamschool.org

