



Early Years

Reception Brochure 2022 - 2023



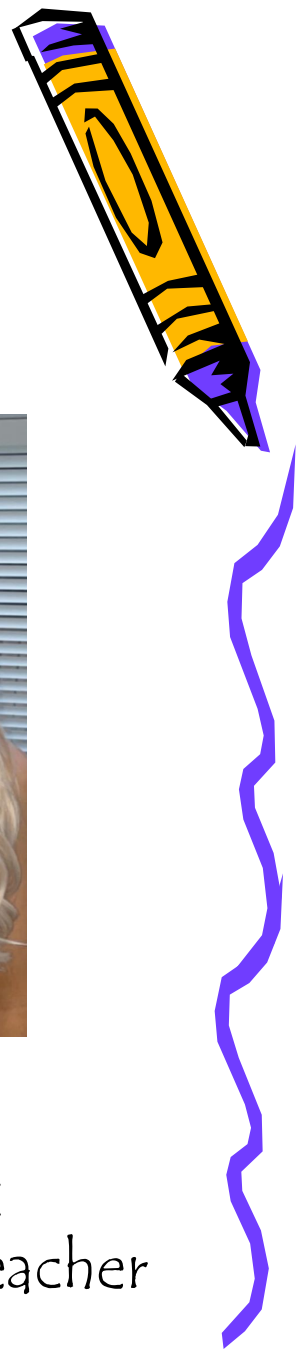
Meet The Reception Teachers



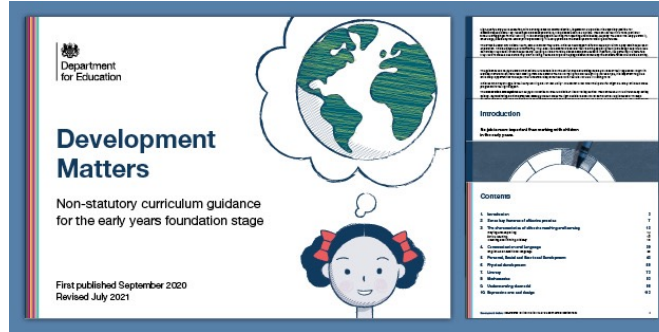
Miss Smith
EY Lead
Reception Teacher



Miss Fraser
Literacy Lead
Reception Teacher



Early Years Curriculum



Links:

https://assets.publishing.service.gov.uk/government/uploads/system/uploads/attachment_data/file/1007446/6.7534_DFEDevelopmentMattersReportandillustrationsweb2.pdf

Reception Assessment link:

https://assets.publishing.service.gov.uk/government/uploads/system/uploads/attachment_data/file/974907/EYFS_framework_-_March_2021.pdf

https://assets.publishing.service.gov.uk/government/uploads/system/uploads/attachment_data/file/868099/2020_Assessment_Framework_Reception_Baseline_Assessment.pdf



The Early Years Curriculum

At West Boldon, our Reception classes are a special place full of high quality learning and friendship, where all children are happy; feel safe and are valued. We provide the best educational provision in a stimulating and creative environment, in which children can explore and discover the world.

We believe that every child deserves the best possible start in life and support to achieve their full potential. Every child will be supported individually to make progress at their own pace.

We offer a flexible approach so we are able to respond quickly to children's learning and development needs.

The Foundation Stage covers a two year curriculum beginning when the children enter Nursery through to the end of the Reception Year.

The children are expected to be secure with all Early Learning Goals by the end of Reception.

The Foundation Stage curriculum is planned around PRIME and SPECIFIC areas of learning.

PRIME areas are:

- Personal, Social and Emotional Development
 - Communication & Language
 - Physical Development

SPECIFIC areas are:

- Literacy
- Mathematical Development
- Understanding the World
- Expressive Arts and Design

The children need to be secure within the PRIME areas in order to be able to access the SPECIFIC areas.



The Early Years Curriculum

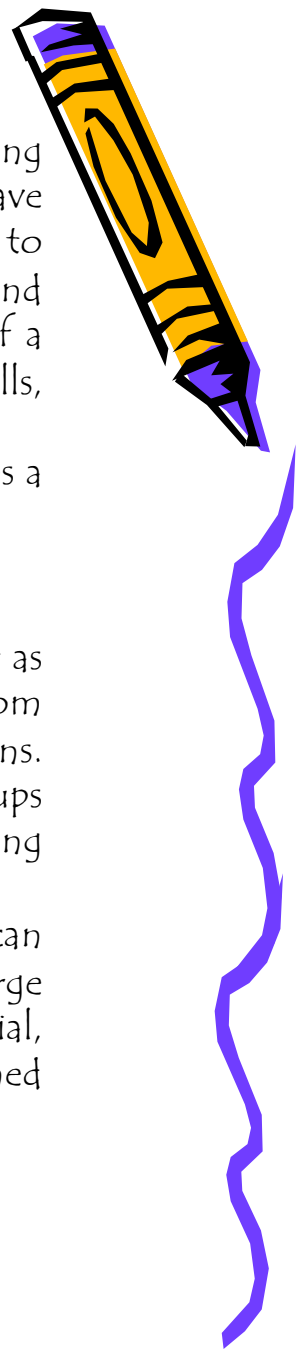
Our children are excited and motivated to learn through rich and challenging learning experiences; opportunities to explore, risk taking and first-hand purposeful experiences. We have high expectations for all our children and recognise that children have different starting points to their learning. We plan according to children's stage of development so all can thrive and develop. The team of staff who are involved in the Early Years believe that the provision of a secure, caring and stimulating learning environment will enable our pupils to acquire the skills, knowledge and understanding necessary to become confident independent learners.

At West Boldon Primary School we provide a broad and challenging curriculum which provides a wide range of challenging, purposeful and interesting learning experiences for the children.

Indoor and outdoor learning

Children in the Early Years access our curriculum both indoors and outdoors. Both are equally as important to develop children's self-initiated knowledge and play skills. Inside the classroom Reception are taught as a whole class during Phonics, Literacy, Mathematics and Topic lessons. Children are then targeted after these lessons and staff will work with the children in small groups as well as individually. Children are then given the opportunity to choose their own learning challenges both inside and out of the classroom.

At West Boldon Primary we have a newly developed large outdoor area, where the children can access a range of resources that cover many different areas of the curriculum. Children use large scale resources and access equipment they would not be available indoors. The children's social, physical, communication and language skills develop particularly well in this carefully planned outdoor provision.



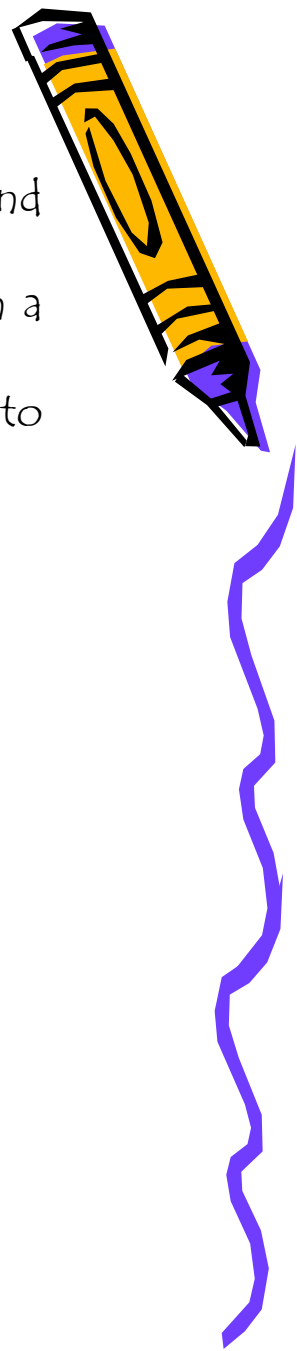
Activities and Resources

We know that children learn best through play, when fully engaged with ideas and activities that interest them.

Our provision is play based and includes scope for children to self-select within a particular area as well as choosing activities.

Below are some of the resources and experiences that will be regularly offered to the children.

- Reading Area
- Role Play Corner
- Puppet Show
- Art Activities and Sensory Play
- Sand and Water
- Malleable Play
- Construction Toys
- Dressing Up
- Small World Toys
- Climbing
- Technology
- Being Outdoors



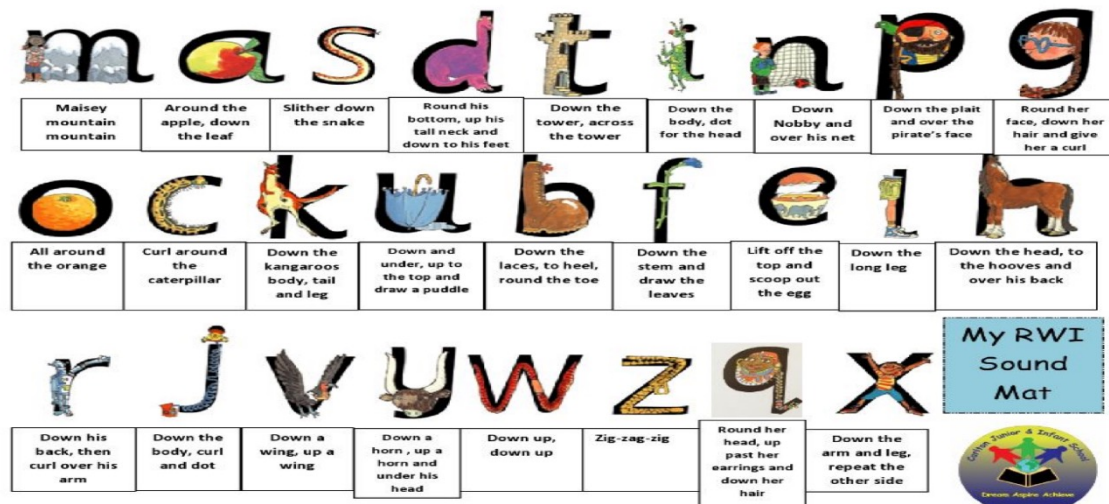
Daily Phonics

At West Boldon Primary School we value reading as a key life skill, and are dedicated to enabling our pupils to become lifelong readers. We believe reading is key for academic success and ensure we have an inclusive approach to the teaching of reading.

We learn to read and spell using a scheme called Read Write Inc. The children are assessed at the beginning of a school year and placed into ability groups. They are assessed at the end of each half term and groups may change in order to best meet the children's individual needs.

We teach daily Phonics lessons, in small groups, where children are taught the names and sounds of the letters of the alphabet and different digraphs. They are taught to blend and segment a range of CVC (consonant, vowel, consonant) and CVCC / CCVC words. Children are also encouraged to recognise and develop a sight vocabulary a range of 'tricky' and high frequency words.

Handwriting – Along with daily Phonic sessions, children will use the Read Write Inc handwriting phrases to help with their letter formation and early writing.



Red Words

I
to
the
no
go
my
your
said
you

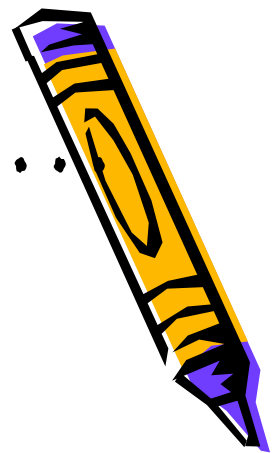
My RWI
Sound
Mat



A typical day in Reception...

- ◇ 8.45 Register
- ◇ 9 -10 Phonics group time
- ◇ 10 – 10.15 Snack
- ◇ 10.15 – 10.30 Literacy using Talk 4 Writing activities
- ◇ 10.30-11.30 Small group time (adult led)
Self directed activities using both indoor and outdoor areas
- ◇ 11.30-11.35 Tidy up time
- ◇ 11.35-11.50 Mathematics group time
- ◇ 11.55 Lunch time

- ◇ 1 -1.30 Dimensions topic based activity time
- ◇ 1.30 – Self initiated activities outdoor & indoor
- ◇ Small group Topic based activity time
- ◇ 2.50 – Tidy up time
- ◇ 2.55 – Story time / Helicopter stories
- ◇ 3.15 – Time to go home!





A few reminders...



- ♦ Your child needs to bring their book bag to school everyday.

Reading day:
Reception – Wednesday



- ♦ Children need to bring their PE kit on a Monday and it will be sent home every Friday.





Uniform



- ◇ Please ensure that names are in EVERYTHING!!!
- ◇ It is important that your child's clothing and other property are **clearly labelled with their name**.
- ◇ Send coats EVERYDAY (even when it's sunny!)
- ◇ Sensible **black shoes** preferably velcro fastening rather than laces.
- ◇ No jewellery please.
- ◇ Spare clothing such as underwear, socks, tights, trousers and skirts incase of any accidents.
- ◇ **Waterproofs labelled** (lots of outdoor fun in all weathers).
- ◇ **Wellington boots labelled** (all waterproofs can be kept in school under your child's peg).
- ◇ Sun hat and sun block, **clearly labelled** during the summer months.
- ◇ A **labelled** water bottle which can be refilled at school.



Attendance

It is important that your child attends school on a regular basis.

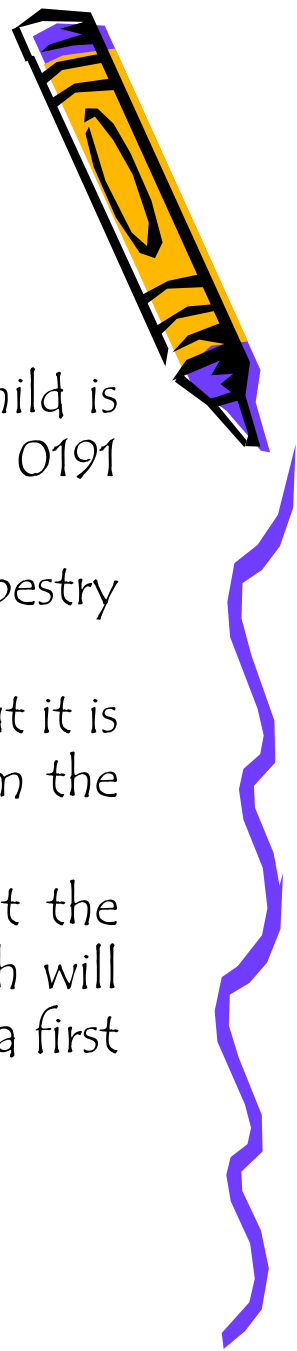
When children are ill

Please inform the school of any planned absences and if your child is unable to attend due to sickness. You can contact the school on 0191 5362846.

You can also contact your class teacher via class DOJO or Tapestry which will be set up when your child starts in September.

Medication – We are able to administer prescribed medication, but it is essential that you sign a consent form that you can collect from the school office.

Accidents / Incidents – If your child has an accident whilst at the school, a member of staff will complete an accident form which will give you a brief summary of the incident and the action taken by a first aider. Serious injuries we will inform you by phone.



Keeping you informed

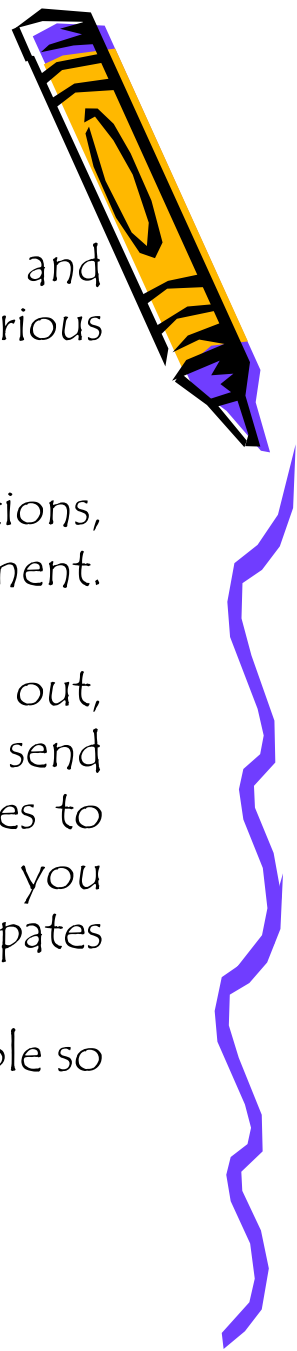
At school each child has their own Phonics, Literacy, Maths and Dimensions book which you will be able to look at during various different points of the year.

Learning Journals

We use Online Tapestry Learning Journeys to record observations, photos, assessments and notes of your child's learning and development. These will relate to the Early Years Foundation Stage Framework.

Parents and carers can see the observations which have been carried out, the outcomes their child has achieved by using a login which we will send to you via email. We invite you to add your thoughts and responses to your child's learning journal. We want to work in partnership with you and welcome any comments, questions or activities your child participates in outside of school.

Please complete the enclosed letter within your pack as soon as possible so we can set you up on the system ready for September.



Staying at School for Lunch



Where we sit



Salad bar



Eating with our friends

We get to eat lovely meals



The dinner staff look after us



....or we can bring a healthy packed lunch



And Finally...

If you have any worries or concerns please come in and see a member of staff and we will do our best to help you.

We look forward to working with you and your child in September!

How to contact us:

0191 5362846

info@west-boldon.co.uk

