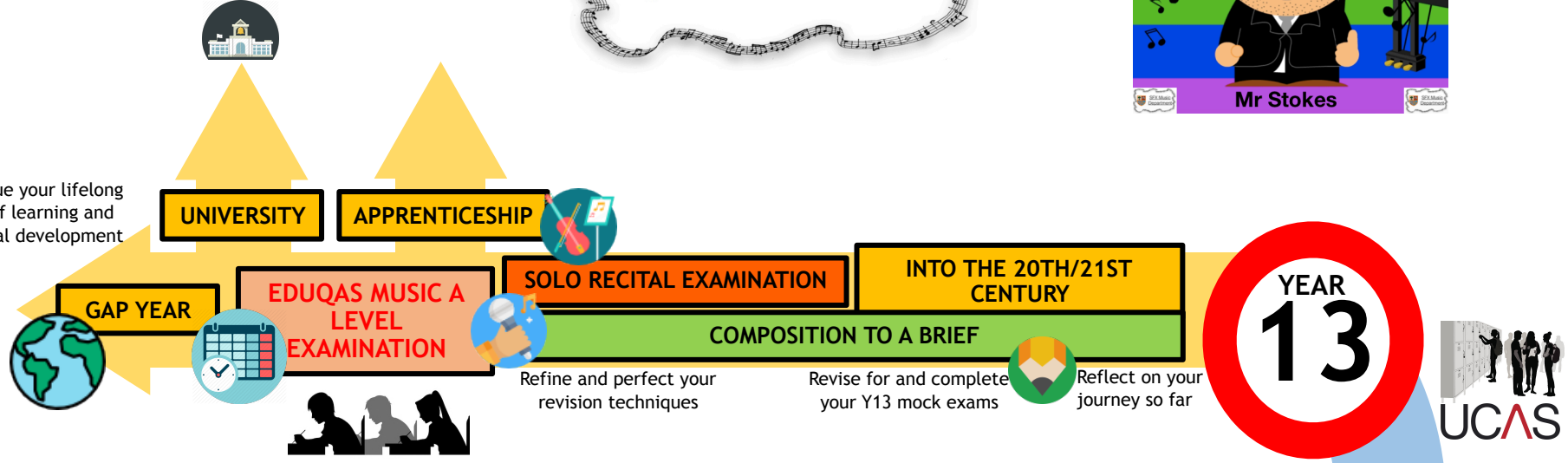


# MUSIC DEPARTMENT LEARNING JOURNEY



Continue your lifelong love of learning and personal development



Be entered in for the ABRSM Grade 5 theory exam if not achieved already.



classical style  
typical harmonic progressions  
sonata form  
structural balance, phrasing and melodic shapes, typical devices such as arpeggio figuration, sequence textural contrasts and devices such as unison, counterpoint, fugato tonality, related keys, typical cadence, progressions, approach chords,

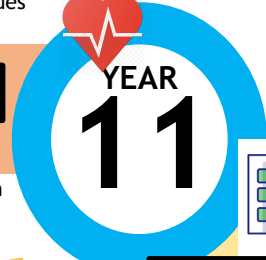
Apply for University through UCAS or alternative post 18 courses

OPTION CHOICE



EDUQAS MUSIC GCSE EXAMINATION  
SUMMER GCSE LISTENING & APPRAISING EXAM

ALL COURSEWORK COMPLETED



Complete Y10 mock exams to get GCSE ready

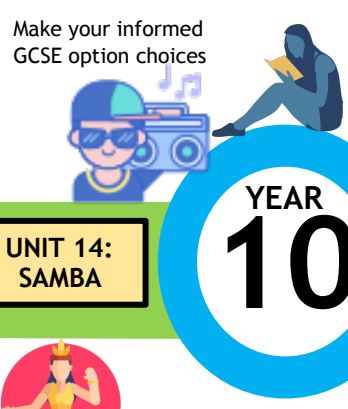
Reignite your passion for Enrichment!

OPTIONS EVENING

How music can enhance the visual images and dramatic impact of film, and can reflect the emotional and narrative messages of the drama.



About the different types and styles of songs from different times, places and styles.



Embed excellent study habits and get ahead with revision



SET WORK STUDY  
POPULAR MUSIC  
MUSIC FOR ENSEMBLE  
COMPOSITION "FREE" Start!

UNIT 11: ROCK & ROLL  
UNIT 10: JAZZ & BLUES

Bass lines  
Lyric writing  
12-bar blues structure & improvisation. 7th Chords!



To understand syncopation and how it is used in reggae music



UNIT 9: MUSIC OF THE WESTERN CLASSICAL TRADITION

UNIT 8: REGGAE

UNIT 7: MUSICAL FUTURES

UNIT 6: DANCE MUSIC ACROSS THE AGES



Music in context; the study of the western classical music canon (key dates, events, people, pieces, musical features etc...)

Whole class ensemble work

Sequencing & Looping

Sit Y7 end of year Music Exam



Music literacy & context

Vocal technique and posture

Volunteer to help others

Develop good independent study habits

Develop an understanding of musical instruments.

UNIT 5: INSTRUMENTS OF THE ORCHESTRA

UNIT 1: BUILDING BLOCKS

UNIT 2: CHINESE MUSIC

UNIT 3: COMPOSING AN 8-BAR MELODY

UNIT 4: KEYBOARD SKILLS

Year 7 Welcome and Baseline Assessment

Actively seek out rewards

Staff Notation: treble clef, time signatures, signs and symbols



Learning about # & b and the pentatonic scale and Improvising on the pentatonic scale.

Be introduced to the Music Department, advice and Enrichment Programme!

