

Sport for All, Space for You.



Elm Sports Centre, Simon Balle All-through School Mangrove Road, Hertford, Hertfordshire, SG13 8AJ
Telephone: 01992 410400 | Email: bookings@simonballe.herts.sch.uk



The Elm Sports Centre at Simon Balle All-through School

Your Sporting Space at
Simon Balle All-through School



The Elm Sports Centre is a brand new, state-of-the-art indoor sports facility located on the outskirts of the town of Hertford. The sports hall can cater for a wide variety of sports and activities including netball, basketball, badminton, 5-a-side football, futsal, cricket nets and table tennis as well as martial arts and exercise classes.

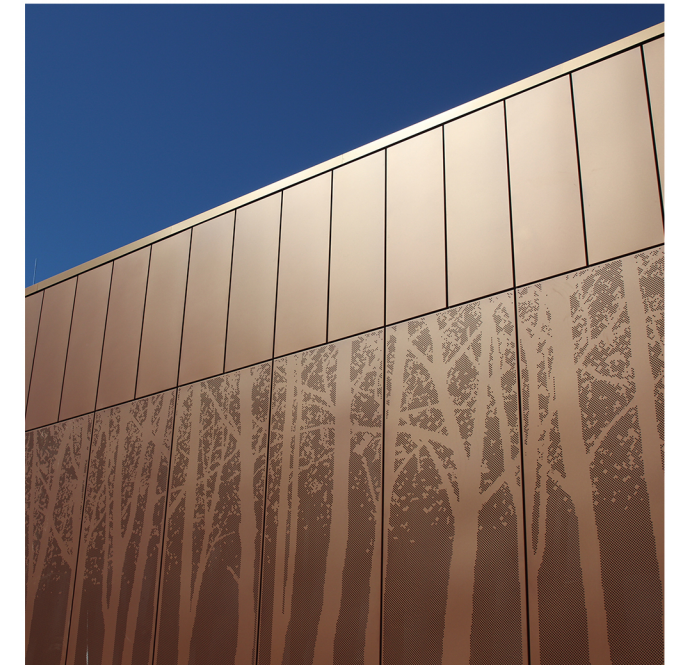
During school hours, the Elm Sports Centre is utilised by the students at Simon Balle All-through School but is otherwise available for hire to community groups, sports clubs and members of the public



Sport for All, Space for You.

The Elm Sports Centre
Simon Balle All-through School
Mangrove Road
Hertford
Hertfordshire
SG13 8AJ

Telephone: 01992 410400
Email: bookings@simonballe.herts.sch.uk





Sponsorship Propositions with The **Elm Sports Centre** at Simon Balle

A corporate plaque in the Reception area of the new Elm Sports Centre

Your company/organisation would have a corporate plaque on a "sponsors wall" within the Reception area of the new Elm sports centre. The Reception area will now serve as the main entrance to both the school and the new sports hall. The footfall in this area will include the 1,100 young people who attend the secondary phase of the school and all visitors to the school. The sports hall is hired out seven days a week and the Reception area will be the only entrance for hirees to access the sports hall. Current hirers include netball clubs and netball organisations, youth football clubs, cricket clubs, a martial arts group and a school holiday club. The sports hall is also available to the general public to book ad hoc sessions in a range of sports including badminton and five-a-side football. We would expect a footfall of up to 1,000 people per month to be passing through the area.

A position on the sponsorship page on the Elm Sports Centre website

Your company/organisation will be thanked for your support on a sponsorship page on the Elm Sports Centre website. This will include your company/organisation's logo, a short description of what you do and links to your website. The Elm Sports Centre website will be linked to the main Simon Balle All-through School website. It will be viewed by not only the school community but also an external audience.

Inserts in the school newsletter

Your company/organisation will be thanked for your support in the school newsletter. This will include a link to your website. The school newsletter is emailed out to approximately 800 families with students at Simon Balle All-through School on a fortnightly basis. The majority of the school's catchment area is Hertford-focussed and falls within 3km of the school site. The newsletters are also posted on the school's website for external people to read.

Posts on the school social media sites

Your company/organisation will be thanked for your support on the school's social media sites. This will include a link to your website. The school's Instagram account has over 2,600 followers and receives a similar number of visits from non-followers every 90 days. Typically, the site will receive in excess of 12,000 profile visits every 90 days. Additionally, the school has over 2,200 followers on Facebook and approaching 600 followers on LinkedIn. The school has plans to build on these numbers and increase social media engagement over the next year.

One free three-hour evening session in the sports hall

An opportunity to use the sports hall for a company/organisational sports-related team building event or family fun session. Sports could include 5-a-side football, netball, basketball, darts, cricket nets. (The session would be subject to availability and at times where there were no existing bookings. We work to accommodate a mutually-convenient slot with the greatest availability being during the summer months.)

Your Sporting Space at
Simon Balle All-through School





Sponsorship Packages with The Elm Sports Centre at Simon Balle

Bronze Package - £200 (excl VAT)

A plaque for your company/organisation in the Reception area of the Elm Sports Centre.
A position on the sponsorship page on the Elm Sports Centre website.
One insert in the school newsletter.

Silver Package - £300 (excl VAT)

A plaque for your company/organisation in the Reception area of the Elm Sports Centre.
A position on the sponsorship page on the Elm Sports Centre website.
One insert in the school newsletter.
One post on the school social media sites.

Gold Package - £400 (excl VAT)

A plaque for your company/organisation in the Reception area of the Elm Sports Centre.
A position on the sponsorship page on the Elm Sports Centre website.
Four quarterly inserts in the school newsletter within a calendar year.
Four quarterly posts on the school social media sites within a calendar year.

Platinum Package - £500 (excl VAT)

A plaque for your company/organisation in the Reception area of the Elm Sports Centre.
A position on the sponsorship page on the Elm Sports Centre website.
Four quarterly inserts in the school newsletter within a calendar year.
Four quarterly posts on the school social media sites with a calendar year.
One free three-hour evening session in the sports hall (subject to availability).



Please note:

The prices quoted are for a sponsorship agreement for a 12-month period.
All prices are quoted excluding VAT.
The costs of producing and fitting the bespoke corporate plaque will be in addition to the sponsorship prices quoted.
The school reserves the right to refuse sponsorship from any company or organisation whose operations it deems inappropriate for a school setting or incompatible with the school's ethos.

