

# Primary phase newsletter

Friday 15th July 2022

*Creating Tomorrow's Citizens Today*



## All-through news

And so we reach the end of this very special year! Our first year of being all through and what a “come back” from the constraints of the pandemic. Since the last newsletter even more exciting learning and enrichment opportunities have taken place. Students in all parts of the school have made visits, listened to speakers and participated in sport, music and other events.

The last newsletter was published before our outstanding all-through concert at Saffron Hall, Saffron Waldon, where over 200 students of all ages plus alumni played and performed to the highest standards for almost 3 hours. Further concerts followed the next week! Scroll down and you will read more! A big thank you to all who have put so much energy into making all this happen.

### Busy Lizzies

Busy Lizzies@Simon Balle received an outstanding Ofsted report recently and we are thrilled that inspectors understood and recognised the truly great work that Liz, Tony and her team do, many of whom are also part of the Simon Balle Parent community. Well done - we are truly privileged to work in partnership between Simon Balle and Busy Lizzies. Their report can be read here:

<https://reports.ofsted.gov.uk/provider/16/2544917>

### Our school site

Thank you for the interest shown after the last newsletter about site developments. The fencing work is planned for over the summer and the erection of the large multi use classroom will take place, ready for late September. Our next quest is to start the journey in trying to get funding for a sports hall, which is so desperately needed. We know that this will be a long journey as at best we will need to raise over £2m and at worst £6m. However our facilities are so poor for a school of our size and this deficit has been recognised through our capacity survey. Let's be hopeful.

One of the privileges of a Senior Leader's role is to be able to speak with so many children and to find out more about them. Our children and young people really enjoy school and feel very much part of this special community. It is always pleasing to see at events like the school fete, primarily aimed at primary aged children, some KS3 children who come and enjoy the atmosphere. Thank you too as we continue to receive lovely comments from parents about the school, and also offers to help in such a variety of ways.



The end of any academic year in a school brings great happiness at the sense of achievement but sadness too as colleagues and students move on. We have mentioned this later in our newsletter. This year our very first children who joined the new all-through school in September 2015, are now moving up to secondary. We thank you for being our wonderful pioneers, for teaching us so much and for modelling what it means to be an all through community. We know that you will continue to thrive!

Today they joined with 120 Y6 children from other local primary schools and staff are already commenting upon what a great cohort this looks to be- exciting times ahead!

Therefore there is very little left for Mrs Kirk and I to say except to wish everyone a restful, and happy summer break, ready to return safely on Monday September 5th.

### **Weather warning**

**HYDRATION - Can parents/carers please ensure that all students have a water bottle or other means of hydration with them next week. They can fill their bottles up at the free water points around the school.**

### **Sports presentation**

On Friday 8th July we held our first Sports Presentation Evening since 2019 and this year was the very first All through edition. The evening was fantastic with many parents and students from Year 5 up to Year 13 in attendance. The PSA provided refreshments which on a lovely sunny evening provided a lovely community atmosphere. Many thanks to the PSA for their efforts and support.

We were very fortunate to have Trixie Wraith (800m International athlete) and number 2 in the UK over the U20 800m indoors this year. Trixie took part in a Question and Answer session providing an insight into her training, how she started athletics and her next steps in her career.

Many sports awards were handed out on the night and even though everyone in attendance did not receive an award, everyone invited were there due to their commitment to training and school sport representation throughout the year. The marquee awards were the last to be handed out and went to the following students ;

Sportsman of the Year 2022 – **A Greaves**  
Sportswoman of the Year 2022 – **S Bello**  
Larch Sportsman of the Year 2022 - **J Taylor**  
Larch Sportswoman of the Year 2022 - **E Robinson**

Congratulations to all award winners with over 70 students receiving awards. Finally thank you to everyone who supported the event and we look forward to the 2022-23 school sports season.

### **Staff leaving and thanks**

We are sorry to be saying goodbye to some of our teaching and support staff.

Jack Andrews (D&T), Ben Morris (Head of 6th form) and Stephanie Modi (science) are relocating. Anna Palmer is pursuing a new career after many years teaching. Freddie Walsh and Trixie Wraith have been two excellent gap year students who are now venturing further afield. Sophie Pearce in the Larch is going to be teaching nearer home as is Terry Doyle

(PE), and Leanne Law (science prep) will be joining a school near to where she lives. Helen Witty (SENDCo) and Kirsty Mayo have both taken up new posts. Annabelle Ashwood, Jane Johnston (food) and Melanie Timpson (cover supervisor) are leaving for personal reasons.

We wish them every success for the future and hope that they will keep in touch. Thank you all for your support and commitment to the school and our students.

### **Music**

Our Musical Students have been very busy as the school year comes to an end. From Saffron, to Trinity Results, to Year 6 Composition to Music Tour!

To find out more, please read about it here:

<https://www.simonballe.herts.sch.uk/musical-news-july-2022/>

### **HAPpy camps**

HAPpy camps are back this summer Hertfordshire County Council is once again funding free summer activity camps for children and young people who attend a Hertfordshire school and are in receipt of benefits-related free school meals.

There are around 190 HAPpy camps running across the county this summer, with 45,000 free places

available from 25 July – 31 August.

At the sessions, which vary in duration from four to seven hours long, eligible children and young people can enjoy free food, free sports and free craft activities this summer. They will also receive advice on nutrition and cooking skills to enhance their health and wellbeing.

If your child is eligible and you have not received your code ask your school office for it, or email [haf@herts.ac.uk](mailto:haf@herts.ac.uk)

Free places can be booked from Monday 20 June via the Herts Sports Partnership's website:

<https://sportinherts.org.uk/booking>

### **Walking bus**

On 4th October last year we launched the walking bus. An initiative to promote exercise, reduce the pollution of traffic driving up to the school, and encourage independence. We started walking 9 passengers a day up from Old London Road Car Park to the school. Now we have over 20 passengers walking up with us a day, a small team of volunteers and there is a real community spirit that has developed around those travelling on the bus.

For this to continue to work we need more parent volunteers. Volunteers need to be at Old London Road Car Park by 8.20am and will be finished around 8.45/8.50. We generally communicate on a WhatsApp group.

We will arrange DBS checks and ensure you receive training to be confident in helping out. Ideally you would nominate one or 2 days you would like to volunteer on... To volunteer or if you have any questions at all, just drop me an email to [SimonBalleWalkingBus@gmail.com](mailto:SimonBalleWalkingBus@gmail.com).

I'd also just like to thank anyone who has volunteered this year... parents, governors, and secondary students. This only works because everyone pitches in!!

Jo Brown (Parent and governor)

## PSA - Slice of Summer

Last Saturday, Simon Balle PSA hosted the 2022 Slice of Summer. It was wonderful to once again see members of the school, and wider community, join together for an afternoon full of fun, games and lots of smiles in the sunshine.



We would like to thank Edwins, M-Y Books, Chirp, Bury Rangers, CNC Property Group and Abel Estate Agents for generously sponsoring the event, as well as our willing volunteers who gave up their time to make this event a success. Without you it simply would not have happened.

Please take a moment to provide some essential feedback regarding our fairs, by completing a short survey.

<https://forms.gle/7VbbXmj6cmP82Lbw5>



## Primary News

### Vice-principal's welcome

What an exciting fortnight it has been! Our celebration assemblies have been packed with congratulations offered to so many children in so many different areas of their success. This week, we were very proud of 38 children in Years 3 - 6 who have taken Trinity music exams, all passing their exams, and with 18 achieving merits and 15 achieving distinctions. Instruments varied from violin to oboe, saxophone to trumpet, cello to bassoon, clarinet to flute to piano. Many children achieved success at grade 1 and 2, which is brilliant, but there were also children achieving success at grades 3, 4 and even grade 5 - phenomenal achievements for children still within our primary phase. We very much look forward to seeing their talents continue to blossom and flourish. Thank you to parents too for your support, patience and encouragement of the important practice that leads to these great results. We are delighted with the sign up to continue and to begin learning instruments from September 2022 - thank you to all in Team Music!

Transition morning yesterday was wonderful to see. A year goes by so quickly (as I am sure you will agree as parents!) but children in their new classes showed that they are ready for the challenges and opportunities to come, as well as impressing staff with the ways in which they daily demonstrate our values. A huge welcome to our new **Reception children** who were busy today engaging with so many play opportunities from dinosaurs to the book corner, from name writing to hand painting, and lots of creative play in the outdoor area. We were delighted with how well the children settled and engaged and were pleased to have almost 100% attendance of parents in school too. When I visited **Year 1**, children were carefully considering their goals (using the classic Dr Seuss text, 'Oh the places you'll go'). They



also enjoyed beginning their study of Picasso with self-portraits and had a wonderful introduction to their Literary Canon text 'Esio Trot' (Roald Dahl). In **Year 2**, staff were so impressed with the children's extended writing with beautiful cursive handwriting - they were fully immersed in describing what might be contained in Mr Twit's beard! (Roald Dahl). An introduction to google classroom with advanced computing skills was also enjoyed! With the Roald Dahl theme continuing, **Year 3** were fully immersed in the beginning of Charlie and the Chocolate factory when I visited. The staff team were also impressed by a focus on geography where a quiz for each pair of children to demonstrate their atlas skills created a real buzz of learning.

**Year 4's** first Literary Canon text will be the Lion, the Witch and the Wardrobe (C.S. Lewis), and as well as making predictions, there was palpable excitement about our London trip to the theatre booked for 20th October! As well as this, an introduction to Banksy was inspiring children to consider their views on his work - artist or criminal? In **Year 5**, staff were impressed with the quality of language used by children to describe the first characters introduced in Matilda (Roald Dahl). History was the subject inspiring great knowledge retrieval and debate as children worked to grapple with chronological order for much of their learning covered across their years in the Larch - a great activity! And to **Year 6**, where we are so proud of so many new student leaders appointed last week and this (please see below). All children showed why they are ready to be in Year 6 with an excellent discussion about the importance of our Simon Balle values which they daily demonstrate. There was much excitement about the children's forthcoming performances in Macbeth as part of the Shakespeare's School Festival. Finally, in a busy morning, children began their Literary Canon text Spiderwick and wrote thoughtful and imaginative diary entries.

All parents will hear from new teachers before the end of term with a welcome letter and with some creative home learning for the summer. This will be on Go for Schools for all, and in new google classrooms for Year 2+. We thank you in anticipation of your support.

**Roald Dahl day**, with dressing up, will be on **Friday 9th September** to kick start a wonderful year of loving literature in the Larch!

## **Student Leaders**

We are so proud of our Year 5 students for showing our school values, particularly resilience and courage, when applying for our student leadership roles. We look forward to seeing the contribution the following student leaders will make to the Larch in the next

academic year.

### **Larch Presidents**

Max and Emily

### **Larch Vice- Presidents**

Annabel, Euan, Amelia

### **Larch Librarians:**

Jessica, Beau, Sofia, Amber, Molly, Eric

### **Sports Ambassadors:**

Marley, Lola, Willow, Lucas

### **Music Ambassadors**

Wally, Isabella, Grace, David, Seren

### **Digital leaders**

Oliver and Zach

### **Eco Leaders**

Daisy, Josh, Seraphina and Samuel

### **Walking Bus Ambassador**

Eloise

### **A summary from the sixth form school presidents:**

It's been an exciting few weeks with the selection of Larch Presidents and Vice Presidents! As the sixth form presidents, we held an assembly showing the Year 5s our roles and responsibilities, so they could see if they would be interested in doing this. Those who were, wrote a letter outlining why they thought would be good for the role, as well as highlighting key values. We then heard the candidates talk about an object of their choice and how it represented them, and it was great to see how excited and passionate they all were. After that, a few of them toured us around in smaller groups to show their leadership and communication skills. We were very impressed by them all! Well done!

Yazmin, Gabriel, Willow, Joshua and Sarah.

## **Enrichment in the Larch**

We would like to celebrate the fantastic enrichment opportunities our Larch students have had this year - from the nativity for our younger students and a Shakespearean performance in London from our eldest Larch students, a trip to Paradise Wildlife Park, Windsor Castle, a magical film night, residential in phase 3 and so much more!

We look forward to sharing some of the exciting opportunities the children will have for the next academic year during an **information evening** on **Tuesday 6th September**, where we will highlight many inspiring opportunities to come including trips, residential, theatre and other performance opportunities. Parents with children in Year 1 will be welcomed at 4.30pm, parents with children in phase 2 (Years 2, 3 and 4) will be welcomed at 5pm and parents with children in phase 3 (Years 5 and 6) will be welcomed at 5.30pm. Please note this date now!



## PSA -Sports Day

The PSA, with support from the school's Business Studies students, will have a selection of soft drinks, bottled water and ice creams available for parents to purchase during the morning. Frozen treats will be available for the children after their races. Please send in £1 with your child on Wednesday morning, should your child wish to have a frozen treat upon return to Larch.

## Dates

An overview of the main events in the new term! More will, of course, be added and communicated to the relevant phases as the new academic year begins.

Thurs 1st Sept	Inset 1
Frid 2nd Sept	Inset 2
Mon 5th Sept	All students in school Photos for Y7, Y9 & Y11 also new Y12
Tues 6th Sept	Larch parent information evening
Weds 7th Sept	Year group photos Y7,11 & 13
Thurs 8th Sept	Larch photos
Fri 9th Sept	Larch Roald Dahl day & dressing up!
Mon 12th Sep	Reception parent information evening
Wed 14th - Fri 16th Sep	Year 5 residential trip
Weds 14th Sept	Y12 expectations evening
Thurs 15th Sept	New Y7 information evening
Fri 16th Sept	2nd DoE bronze expedition
Thurs 22nd Sept	Awards ceremony
Friday 23rd Sept	Doughies Pizza, all-through
<b>Sat 24th Sept ALL-THROUGH</b>	<b>OPEN MORNING -</b>
Thurs 6th & 7th Oct	Battlefields trip 1
Tues 11th Oct	Y10 theatre trip
Wed 12th Oct	Y11 theatre trip

	Y10 parents evening
Thurs 13th & 14th	Battlefields trip 2
Thurs 20th Oct	Y4 London theatre trip
<b>24th- 28th Oct</b>	<b>HALF TERM</b>
Tues 1st Nov	Y8 HPV1 injections
Thurs 10th Nov	Y9 parents evening
Fri 11th Nov	Remembrance Service
Tues 22nd - Wed 23rd Nov	Year 6 Shakespeare performances
Wed 23rd Nov	6th form open evening
<b>Fri 25th Nov closed</b>	<b>Occasional Day - school closed</b>
<b>Mon 28th Nov closed</b>	<b>Occasional Day - school closed</b>
Tues 29th Nov	Inset 3 -school closed for students
30th Nov to 2nd Dec	6th form Cern trip
Thurs 1st Dec	Y12 parents evening
Tues 13th Dec	Year 1 pantomime trip
<b>Wed 21st Dec</b>	<b>End of term (early finish)</b>



# Welcome!

# Summer 2022

Read on for advice on ways to stay safe for you and your family this Summer

## BBQ Safety

We all want to enjoy a BBQ over the summer months, and by following a few simple rules you can ensure the whole family can have fun!

- Check your barbecue is in good working order.
- Ensure the barbecue is on a flat site, well away from a shed, trees or shrubs.
- Keep children, garden games and pets well away from the cooking area.
- Never leave the barbecue unattended!
- Keep a bucket of water or sand nearby for emergencies.
- Ensure the barbecue is cool before attempting to move it.
- DO NOT use in an enclosed space.
- Dispose of ashes in a fireproof container and damp down with water.
- DO NOT use disposable BBQ's in the Countryside.
- Never have a BBQ on a balcony, in a property or above ground level.

### Disposable BBQ's

Although they may look safe as they are in their own metal tin, the container is very thin and easily gets hot enough to catch fire to most things you would put it on, including grass!

They also give off harmful gases including Carbon Monoxide which is poisonous. Never use them indoors and never on your balcony if you live in a flat.



[Barbecue Safety](#)



what3words

To help the Emergency Services further, please download the What3Words app so that if the worst should happen you can give them an exact location of where you are.

The APP is free to download and could save your life!





## Be Water Aware

As summer approaches, and the temperatures soar, its only too tempting to feel the need to cool off in an inviting stretch of water. However, jumping straight into open water can cause potentially fatal cold-water shock even on the warmest day!

### Always be aware of the dangers that open water can pose

- Never swim alone in case you need help.
- Don't drink alcohol when undertaking water related activities, it impairs judgement and your ability to swim.
- Actively supervise children in and around water - drowning can happen fast and silently.
- If you find yourself unexpectedly in the water, don't panic, extend your arms and legs out and float on your back until the effect of cold-water shock passes.
- Never enter the water to try and rescue someone. Call 999 and ask for the Fire Service if inland and the Coastguard if you are at the coast.

### DO NOT swim near or in Weirs

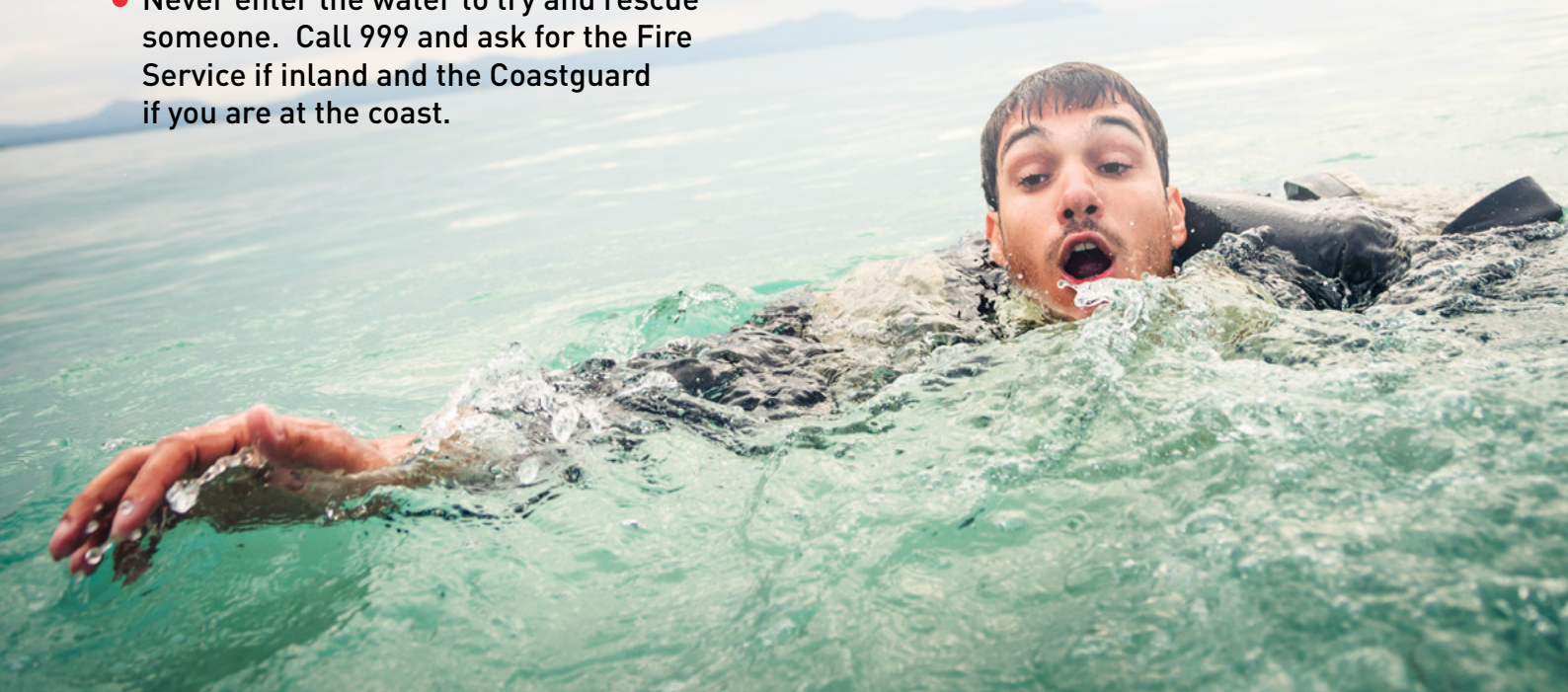
A weir is a feature built in a river which slows down the flow of water. They are dangerous to swimmers as you can get caught in the flow of water.

### DO NOT swim near Locks

Locks are used to allow canal boats to pass from one level of water to another. When a lock is being operated there are millions of litres of water used to lower or fill the lock, and these create dangerous currents which can cause drowning.



[Be Water Aware  
\(nationalfirechiefs.org.uk\)](https://nationalfirechiefs.org.uk)







## Arson in Rural Areas

**The countryside and the properties within it are easy targets for Arson**

Neighbourhoods can reduce the likelihood of arson occurring by promoting neighbourhood watches, educating people about recognizing and reporting unusual activities, and implementing improved internal and external security for homes and businesses.

**You can help to reduce the risk by following these simple steps:**

- Do not leave ignitable liquids within easy reach.
- Dispose of all rubbish and do not leave any laying about.
- Do not allow the lighting of open fires or barbecues.
- Ensure cigarettes etc are extinguished carefully.
- Only allow camping and picnics in selected areas.
- Provide litter bins for bottles and other rubbish - and empty them regularly.
- Ensure parents supervise their children.
- Regularly check and maintain open water supplies for firefighting.
- Ensure 'Fire Danger' warning signs are in place.

**1 in 5 fires** on farms  
& **49%** of rural fires are started deliberately



[NFCC Reduce arson RURAL advice leaflet.pdf \(nationalfirechiefs.org.uk\)](https://nationalfirechiefs.org.uk)

## Have you checked your smoke alarms lately?

**You should do this once a week where possible**

If you do not have smoke detectors at home, Herts Fire and Rescue Service will carry out a safe and well check for you.

They will fit smoke detectors for you for free.

**Please ring your local fire station to book today!**

- Hertford Fire Station 01992 507611.
- Cheshunt Fire Station 01992 901900.
- Bishops Stortford Fire Station 01279 696800.
- It won't cost you a penny and it could save your life.
- All visits are agreed by appointment only at a time to suit you.
- Only uniformed staff will visit and will always carry an ID card.



[Home | StayWise](#)



[Fire safety home visits, school visits and open days | Hertfordshire County Council](#)

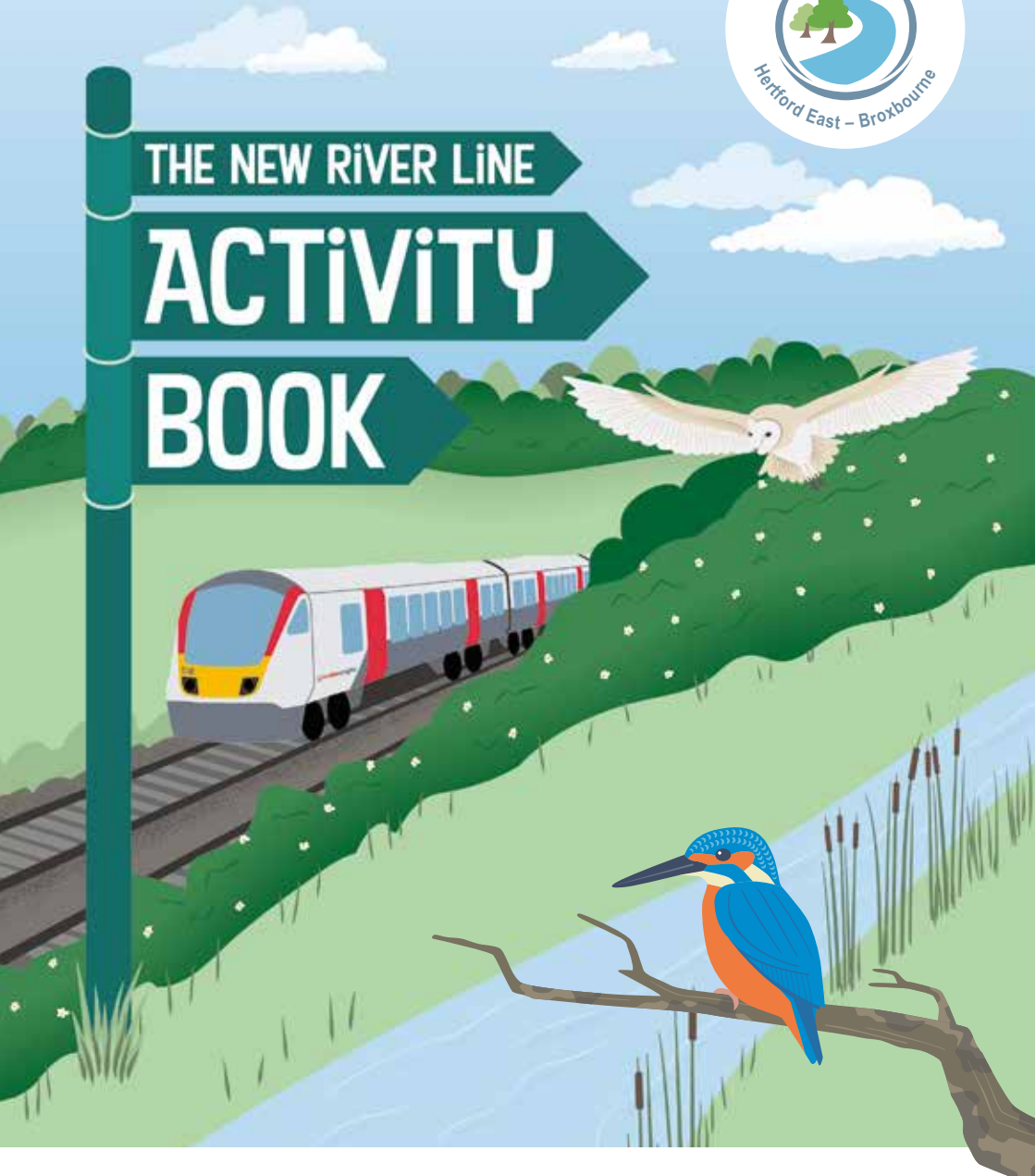
35 minutes from London Liverpool Street



THE NEW RIVER LINE

ACTIVITY

BOOK



# YOUR ADVENTURE STARTS HERE!



Welcome to your New River Line Family Activity Guide which has been produced by The New River Line Community Rail Partnership, a partnership that brings together people and groups to promote and celebrate the branch line between Hertford East and Broxbourne.

Explore the area by train. Here's a few ideas to get you started.

- Walk along the towpath and see how many different types of boats there are.
- Take a picnic and find a beautiful place to eat it.
- Follow the flint wall around Hertford Castle.
- Discover some of the wonderful places between the stations such as Lowewood Museum and Scott's Grotto.
- See how many different birds you can spot at the nature reserves, don't forget your binoculars!
- Try and find as many information boards as you can.



The New River Line is made up of five stations but is on a train line that runs in and out of London, Liverpool Street.

Your Family Activity Guide features suggested circular walking routes around each station and includes plenty of things to spot and do along the way. These routes can be walked in under an hour but we hope you take your time as there is so much to see and do around each station.

Take a trip by train and see what you can spot out of the window, you will pass by rivers and through beautiful nature reserves, just don't forget to stop off and explore further!



## MAP KEY:

The New River Line

The New River Path

River Lea Towpath



The beauty of The New River Line is that the River Lee Towpath and the New River Path run alongside so there are plenty of opportunities to add a walk in-between stations.

The Towpath is recommended for those with wheels. Cycling is not permitted on The New River Path and some of the sections would not be suitable for buggies or wheelchairs.

Please note, occasionally pedestrian level crossings are closed by Network Rail for safety reasons. A map with a marked diversion will be posted at the site.





# HERTFORD

Take a walk from the station to the Castle, across park land, by waterways and through the historical market town.

## DID YOU KNOW?

Parliament Square is so named because, in 1563 the Parliament of England temporarily moved from London to Hertford during a plague outbreak.



## HERTFORD CASTLE

The Castle has gone through many changes during its impressive history and has played an important role in the country's history. Look at the information boards spread around the grounds to find out more. Surrounded by an impressively thick wall of flint and stone the Castle Gardens are a perfect spot for a picnic.

### Five things to do on your walk:

- Draw/take photos of the amazing Hertford East station.
- Try and keep count of how many bridges you cross.
- Explore the adventure playground.
- Find the ice-house in the Castle grounds.
- See what animal is at the top of the war memorial, try to find out why.



## NEW RIVER LINE QUIZ

Four rivers come together in Hertford, what are their names?

## HERTFORD EAST STATION

This beautiful building was opened in 1888 but it wasn't the first station in Hertford, that was built in 1843. The building no longer exists but, The Great Eastern Tavern which stood opposite is still in operation and is one of many pubs owned by McMullens, a family owned brewery that has been based in Hertford since 1827.

100 people travelled on the first train out of Hertford's newest station, many got off at Ware and walked back. You could try this, see how long it takes you by train and by foot.



**THE WEIR.**  
Listen to the sound of the weir. How many different birds can you see?



## HERTFORD MUSEUM

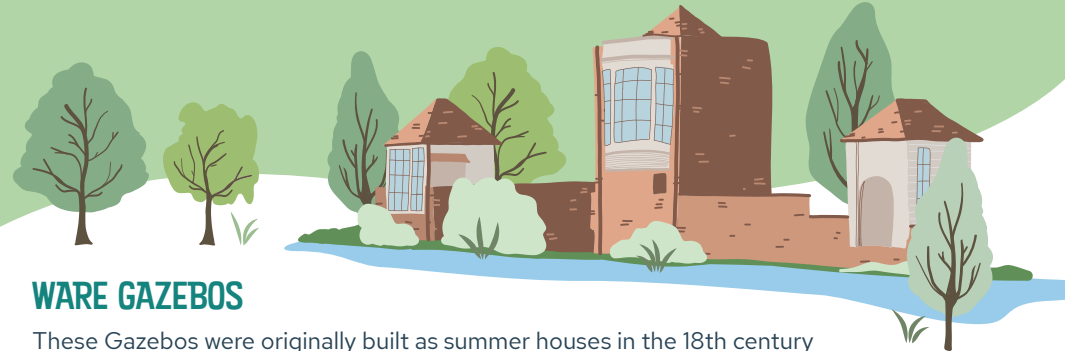
Opened in 1903 the museum building is itself historic, housed in a 17th century Townhouse with a Jacobean style knot-garden. Amongst its many hundreds of artefacts is the largest collection of toothbrushes in the world, find out why inside.

# WARE

Take a walk from the station to The Priory along the towpath, by the Kings Mead's Nature Reserve, across a cascading weir and into a High Street full of historical buildings, modern day shops and independent cafes and restaurants.

## DID YOU KNOW?

There is a Great Bed of Ware in the Victoria and Albert Museum which was mentioned by Shakespeare.



## WARE GAZEBOS

These Gazebos were originally built as summer houses in the 18th century to provide a place of peace and quiet by the river. You will not see as many together anywhere else in the Country. Look out for the information board by the river to find out more.



## PLACE HOUSE

Place House is a building of Grade 1 national historic and architectural importance. As the former Manor House of Ware, the oldest part of the building is thought to date to the late 13th century. It was a school in the 17th century with pupils known as Bluecoats, see if you can see a small statue at the arched entrance.

## Five things to do on your walk:

- Count how many gazebos there are along the river, what would you use one for?
- Find out more about Kings Mead's Nature Reserve, why is it so important?
- Check out the history board outside the station.
- Find the Pulham Stone and the 'island' in The Priory Gardens.
- Try and keep count of how many bridges you cross.



## WARE SKATEPARK

A skatepark suitable for all ages and abilities, bring your skateboard, BMX or scooter and have a go, it's free for all.

## THE PRIORY

Founded in 1338 this ancient building has gone through many transformations through the centuries. It was gifted to the Town in 1920. With a playground, skatepark, putting green, lido, and bowling green there's plenty to do.



ST MARGARETS  
4 MINUTES BY TRAIN

# ST MARGARETS

Take a walk from the station to Amwell Nature Reserve, follow the historic New River Path and see how many trains you can spot as they make their way up and down the New River Line.

## NEW RIVER LINE QUIZ

Why is a Bittern so hard to spot?

St Margarets station has a signal box covered in art, what is your favourite?

## DID YOU KNOW?

King James 1 helped pay for The New River to be built.

WARE  
4 MINUTES BY TRAIN

RYE HOUSE  
3 MINUTES BY TRAIN

### Five things to do on your walk:

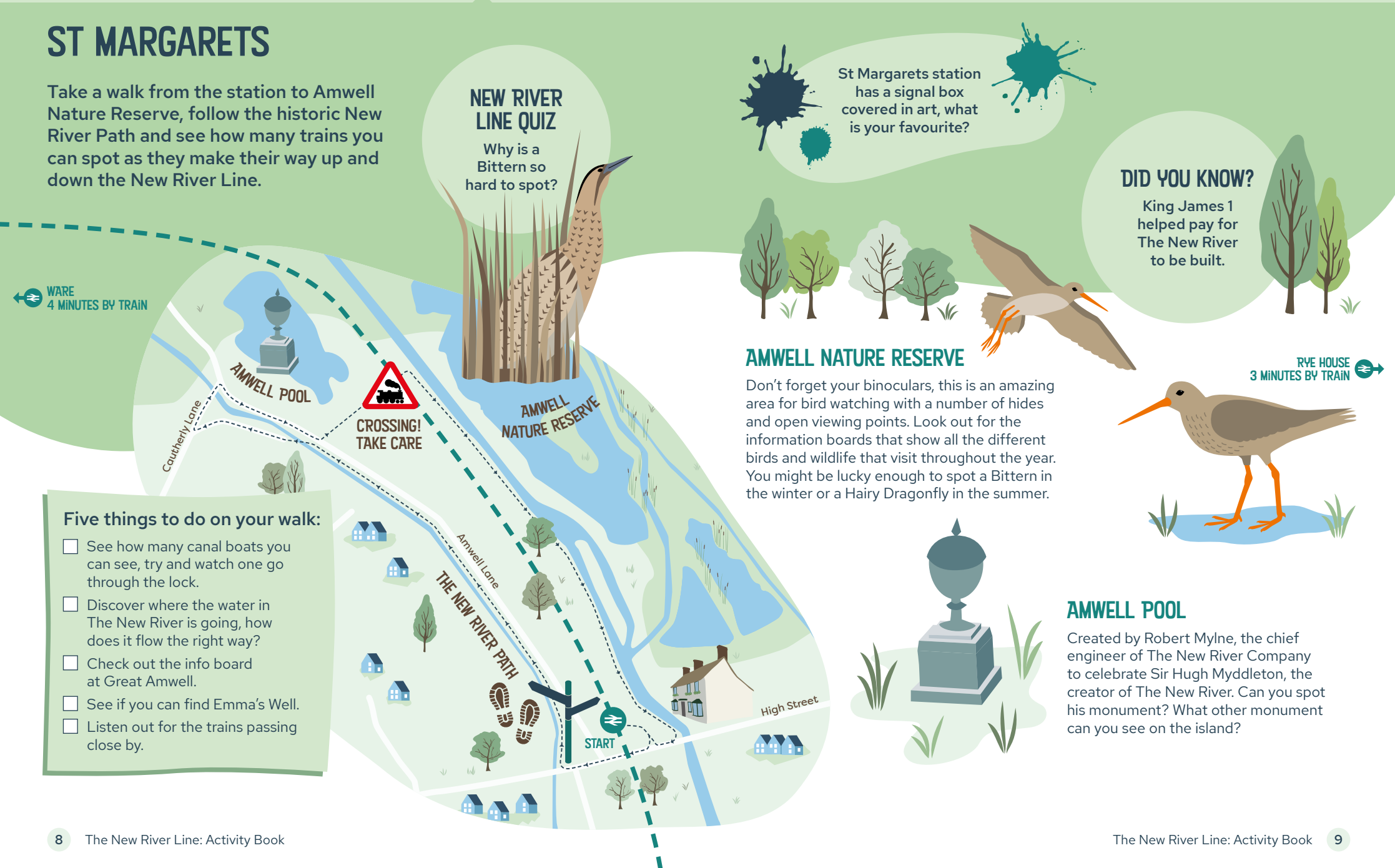
- See how many canal boats you can see, try and watch one go through the lock.
- Discover where the water in The New River is going, how does it flow the right way?
- Check out the info board at Great Amwell.
- See if you can find Emma's Well.
- Listen out for the trains passing close by.

## AMWELL NATURE RESERVE

Don't forget your binoculars, this is an amazing area for bird watching with a number of hides and open viewing points. Look out for the information boards that show all the different birds and wildlife that visit throughout the year. You might be lucky enough to spot a Bittern in the winter or a Hairy Dragonfly in the summer.

## AMWELL POOL

Created by Robert Mylne, the chief engineer of The New River Company to celebrate Sir Hugh Myddleton, the creator of The New River. Can you spot his monument? What other monument can you see on the island?

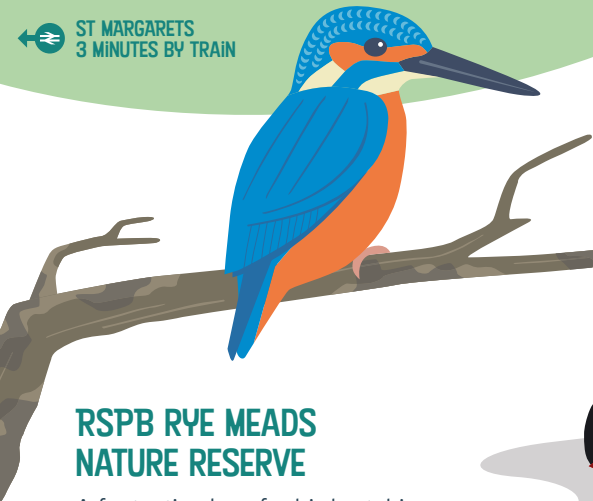




# RYE HOUSE

Take a walk from the station to enjoy some very different attractions. From the historic Gatehouse to the UK's foremost Karting centre to the tranquil surroundings of the RSPB Nature Reserve.

ST MARGARETS  
3 MINUTES BY TRAIN



## RSPB RYE MEADS NATURE RESERVE

A fantastic place for birdwatching and with a visitor centre on site there is always someone on hand to answer questions and help you get the most out of your visit. The reserve attracts other wildlife and if you're very quiet you might spot a water vole. Check out the information boards on your way round they are a great way to discover wetland walks that take you off the beaten track.

### DID YOU KNOW?

The motor racing champion, Lewis Hamilton began his career at Rye House Karting.

## RYE HOUSE GROUP

This is the place to come if you want an amazing karting experience or a chance to battle your friends at Laser Combat and Nerf Wars. The dinosaur themed Rye-Assic Park is perfect for younger adventurers to let off steam.



### Five things to do on your walk:

- Check out the windows at The Rye House pub, how many panes of glass are there?
- Look out for the bug hotels at Rye Meads
- Find the walkways to take you over the wetlands
- What can you smell?!
- Count the gargoyles at the Gatehouse.

BROXBOURNE  
5 MINUTES BY TRAIN



## THE GATEHOUSE

The Gatehouse is all that remains of an historically important Manor House called Rye House, one of the first brick built houses in the country. Have a good look at the columns and the chimney, what shape can you see? Look out for the name plates on the ground, use those to try and imagine what the house may have looked like.

# BROXBOURNE

Take a walk from the station along the New River Path to Lee Valley Park where there are 10,000 acres and 26 miles of waterways to explore. With award winning green spaces, world class sports venues and ecologically vital wildlife havens you'll find plenty to discover.

### Five things to do on your walk:

- Check out the history boards opposite the church and at the Old Mill.
- Find out some wildlife facts at Silvermeade.
- See how many different types of boats you can see on the river.
- Find the bridge close to the train line and watch the trains.
- Time a run down the tree lined path in the park.

## NEW RIVER LINE QUIZ

How can you tell if a water vole is nearby?



LONDON LIVERPOOL ST  
28 MINUTES BY TRAIN



## SILVERMEADE

A wet grassland with ditches, pools and reedbeds which provide a haven for water voles and other wildlife such as dragonflies and grass snakes.

## THE OLD MILL

This historic site, listed in the Domesday Book, has changed hands and roles many times over the centuries. After a catastrophic fire in 1949, there's little more than the 16th-century floor in existence today. Close by is the Old Mill Retreat Café which is open all year round.

## DID YOU KNOW?

Over the years there have been over 25 different spellings for the River Lea's name, Lee is still used, Lay, Leye, Lyge are just some of the older ones.



## NEW RIVER LINE QUIZ

What animal helps keep the grass short in The Lee Valley Park?

RYE HOUSE  
5 MINUTES BY TRAIN



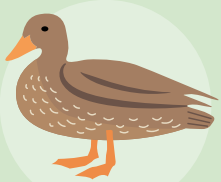
## LEE VALLEY BOAT CENTRE

This friendly boat centre aims to give everyone the chance of experiencing the River Lea by water with options for small and large groups. Look online for details.



# HOW MANY OF THESE CAN YOU SPOT?

A duck quacking



Three different boat names



Three different pub signs



A Greater Anglia train



An interesting insect



A bicycle



Three different shaped leaves



Two different types of birds



An information board



## FURTHER INFORMATION

### The New River Line Community Rail Partnership

- Visit the Community Rail Partnership's own website: [newriverline.org](http://newriverline.org)

 New River Line Community Rail Partnership
  @CrpNew
  crpnew

### The New River Line Community Rail Partners

- [cdaherts.org.uk](http://cdaherts.org.uk)
- [communityrail.org.uk](http://communityrail.org.uk)
- [hertfordshire.gov.uk](http://hertfordshire.gov.uk)
- [hertford.gov.uk](http://hertford.gov.uk)
- [communities1st.org.uk](http://communities1st.org.uk)
- [leevalleypark.org.uk](http://leevalleypark.org.uk)
- [waretowncouncil.gov.uk](http://waretowncouncil.gov.uk)
- [greateranglia.co.uk](http://greateranglia.co.uk)
- [broxbourne.gov.uk](http://broxbourne.gov.uk)
- [eastherts.gov.uk](http://eastherts.gov.uk)

### Places to visit

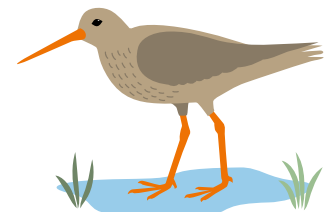
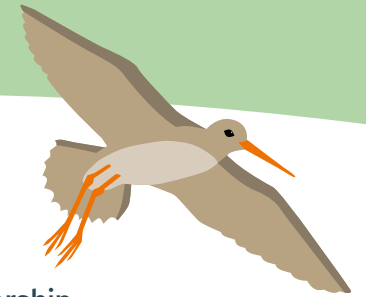
- [hertswildlifetrust.org.uk](http://hertswildlifetrust.org.uk)
- [southernmaltings.co.uk](http://southernmaltings.co.uk)
- [rspb.org.uk](http://rspb.org.uk)
- [rye-house.co.uk](http://rye-house.co.uk)
- [canalrivertrust.org.uk](http://canalrivertrust.org.uk)
- [placehousehall.org](http://placehousehall.org)
- [hertfordcastle.co.uk](http://hertfordcastle.co.uk)
- [leevalleyboats.co.uk](http://leevalleyboats.co.uk)
- Lee Valley Canoe and Cycle Hire (Broxbourne Station): [lvcc.link](http://lvcc.link)
- [scotts-grotto.org](http://scotts-grotto.org)

### Local History

- Stanstead Abbots (St Margarets Station) History Society: [salhs.org.uk](http://salhs.org.uk)
- [lowewoodmuseum.com](http://lowewoodmuseum.com)
- [hertfordmuseum.org](http://hertfordmuseum.org)
- [waremuseum.org.uk](http://waremuseum.org.uk)
- '150 Years of the Hertford and Ware Railway' by David Dent – available for purchase online

### Walks


- The Hertfordshire Way, sign posted walking routes: [fhw.org.uk](http://fhw.org.uk)
- New River Path map by Thames Water: [www.luphen.org.uk](http://www.luphen.org.uk)





# YOUR ADVENTURE STARTS HERE!

Take a trip by train and see what you can spot out of the window, you will pass by rivers and through beautiful Nature Reserves, just don't forget to stop off and explore further!

 [www.newriverline.org](http://www.newriverline.org)

 New River Line Community Rail Partnership

 @CrpNew  crpnew

