



# GCSE Support Evening

...

17/09/24

“life is what you make it!”



# The Purpose of This Evening

- Hear presentation from:
  - Head of year
  - Core Subject Leads
- Share key dates for assessments
- Provide information about work experience
- Give strategies for effective learning and give suggestions how you can help.

**“life is what you make it!”**



# Year 10 Key Contacts

## Head of Year

Miss. Westhead

## Form Tutors

10.1 Mr. Crookes

10.2 Miss Storey

10.3 Miss Penman

10.4 Mr. Hughes-Alty

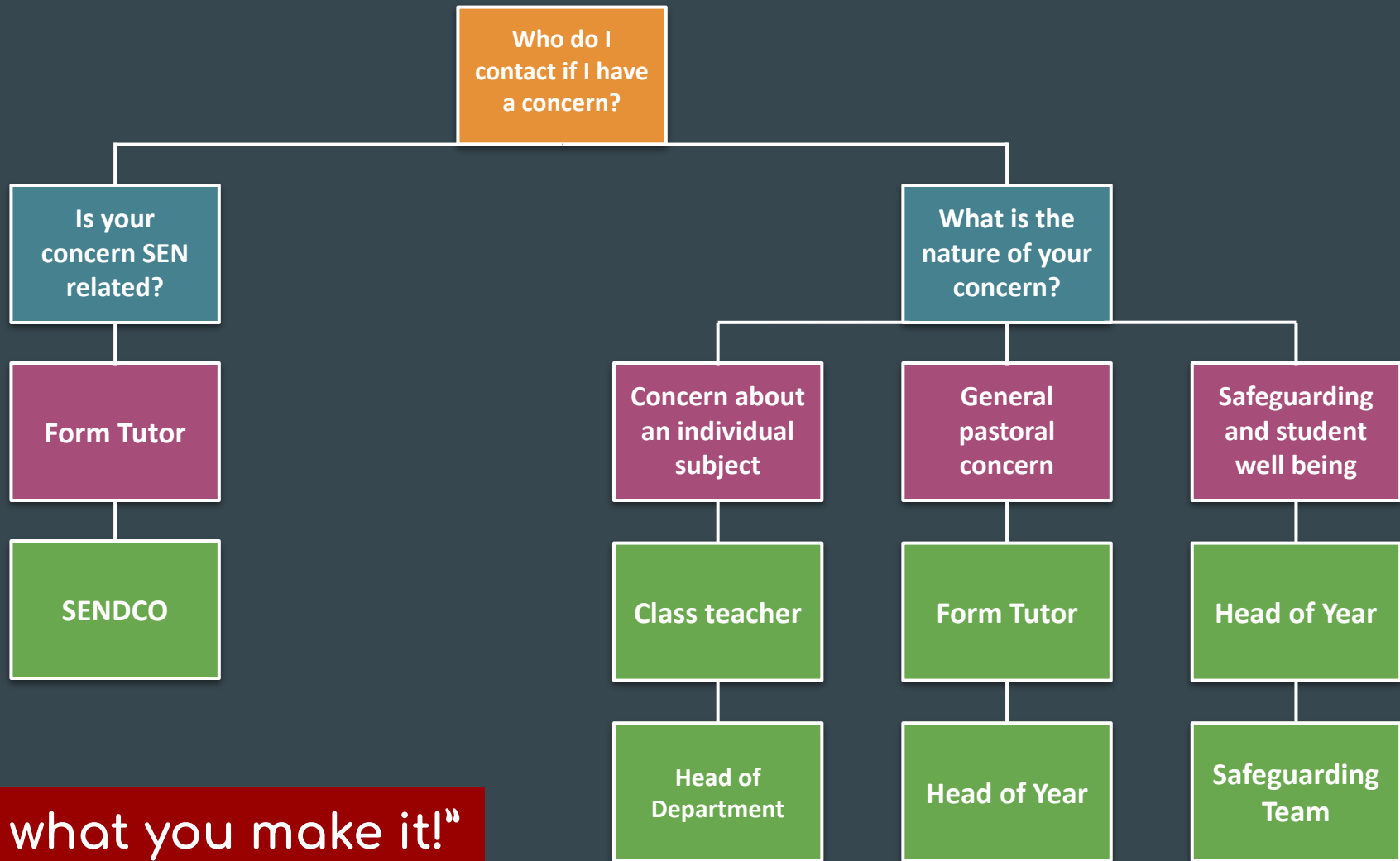
10.5 Ms Haines

10.6 Mrs. Lonsdale

10.7 Mrs. Chen

10.8 Mr. Beaton

“life is what you make it!”



“life is what you make it!”

# Key Events Roadmap

## Year 10

**Autumn Reports:** w/b 4th November

**Work Experience:** 24th March

**Parents' Evening:** 5th March

**Mock Exams:** 16th June

**Final Report:** w/b 14th July



**“life is what you make it!”**

# 9-1 Grading System

- We now have a standard pass and a strong pass.
- Grade 7+ is aligned to an old grade A

## How the new grades compare with old ones

Old grades	New grades
A*	9
A	8
B	7
C	6
	5 Strong Pass
	4 Standard Pass
D	3
E	2
F	1
G	1
U	U

“life is what you make it!”

# Target Grades

Students in Years 10 will be set a minimum target grade based on their CATs performance.

This target grade will be shared with parents as part of a student's termly report home.

Performance compared with targets to allow progress to be monitored by students, parents and staff.

**“life is what you make it!”**

# How to Get Organised

- Subject folders
- Plastic wallets
- File dividers
- Stationery
- Follow a timetable
- Have a sensible working area
- Diary/Planner
- Know your exam dates



		WED		THUR		FRI		SAT		SUN	
TIME	SUBJECT	TIME	SUBJECT	TIME	SUBJECT	TIME	SUBJECT	TIME	SUBJECT	TIME	SUBJECT
9:00-10:00	REVISION	10:00-11:00	REVISION	11:00-12:00	REVISION	12:00-13:00	REVISION	13:00-14:00	REVISION	14:00-15:00	REVISION
10:00-11:00	REVISION	11:00-12:00	REVISION	12:00-13:00	REVISION	13:00-14:00	REVISION	14:00-15:00	REVISION	15:00-16:00	REVISION
11:00-12:00	REVISION	12:00-13:00	REVISION	13:00-14:00	REVISION	14:00-15:00	REVISION	15:00-16:00	REVISION	16:00-17:00	REVISION
12:00-13:00	REVISION	13:00-14:00	REVISION	14:00-15:00	REVISION	15:00-16:00	REVISION	16:00-17:00	REVISION	17:00-18:00	REVISION
13:00-14:00	REVISION	14:00-15:00	REVISION	15:00-16:00	REVISION	16:00-17:00	REVISION	17:00-18:00	REVISION	18:00-19:00	REVISION
14:00-15:00	REVISION	15:00-16:00	REVISION	16:00-17:00	REVISION	17:00-18:00	REVISION	18:00-19:00	REVISION	19:00-20:00	REVISION
15:00-16:00	REVISION	16:00-17:00	REVISION	17:00-18:00	REVISION	18:00-19:00	REVISION	19:00-20:00	REVISION	20:00-21:00	REVISION
16:00-17:00	REVISION	17:00-18:00	REVISION	18:00-19:00	REVISION	19:00-20:00	REVISION	20:00-21:00	REVISION	21:00-22:00	REVISION
17:00-18:00	REVISION	18:00-19:00	REVISION	19:00-20:00	REVISION	20:00-21:00	REVISION	21:00-22:00	REVISION	22:00-23:00	REVISION
18:00-19:00	REVISION	19:00-20:00	REVISION	20:00-21:00	REVISION	21:00-22:00	REVISION	22:00-23:00	REVISION	23:00-24:00	REVISION
19:00-20:00	REVISION	20:00-21:00	REVISION	21:00-22:00	REVISION	22:00-23:00	REVISION	23:00-24:00	REVISION		
20:00-21:00	REVISION	21:00-22:00	REVISION	22:00-23:00	REVISION	23:00-24:00	REVISION				
21:00-22:00	REVISION	22:00-23:00	REVISION	23:00-24:00	REVISION						
22:00-23:00	REVISION	23:00-24:00	REVISION								
23:00-24:00	REVISION										



“life is what you make it!”



A meme featuring Woody and Buzz Lightyear from the movie Toy Story. Woody is on the left, looking slightly concerned. Buzz is on the right, wearing his iconic green and purple space suit, with his right hand raised in a 'rock on' gesture. The background is a simple room with a door and some yellow stars on the wall.

**DISTRACTIONS**

**DISTRACTIONS EVERYWHERE**

# Effective Revision Conditions

NO MOBILE DEVICES

Quiet space

Away from all distractions

Have a designated area that isn't located in your relaxing zone

Take advantage of your school environment

Meeting with people can **SOMETIMES** be beneficial



**“life is what you make it!”**



# Head of Year Miss. Westhead

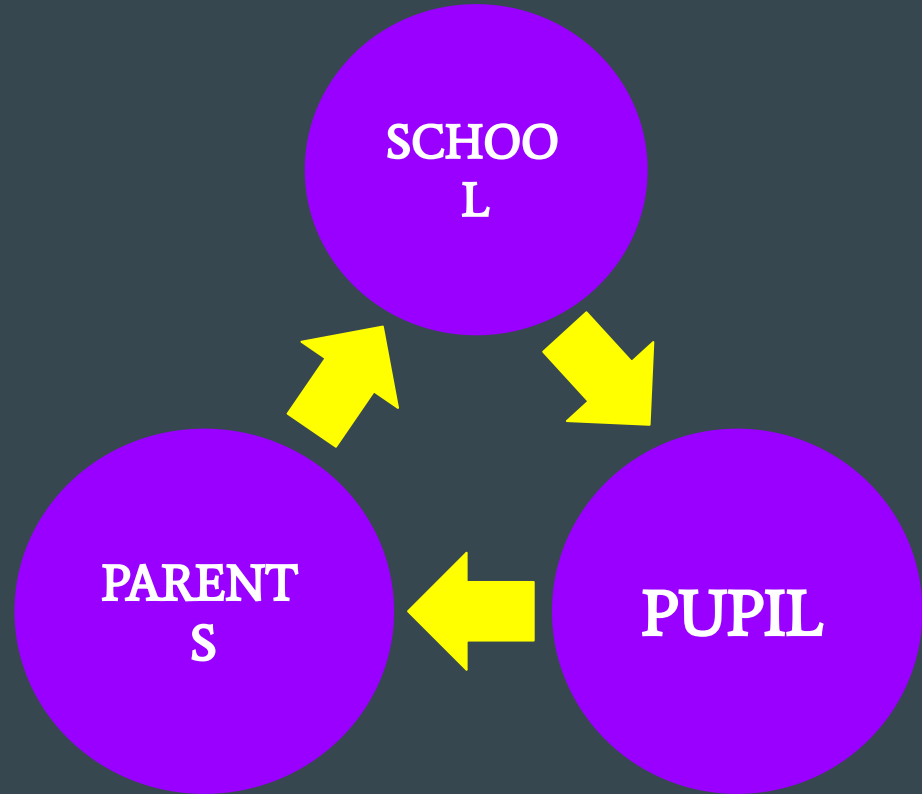


“life is what you make it!”

# Partnership

## Core Goals for Year 10

- Construct foundation for year 11
- Build resilience
- Take responsibility for learning
- Be prepared



“life is what you make it!”

“life is what you make it!”

## Get the Basics Right

- In school, on time everyday
- Working hard, every lesson, every day
- High quality work inside and outside of school
- Managing and organising workload
- Equipped for learning
- Punctuality to lessons



# Attendance

For GCSE success, regular attendance is crucial because it ensures students:

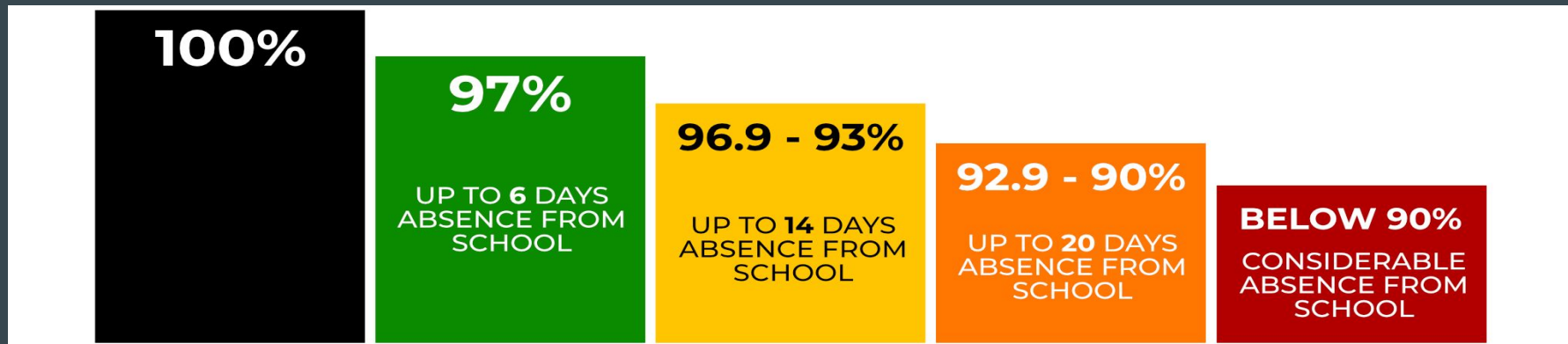
1. Cover the entire curriculum without gaps in knowledge.
2. Receive ongoing support and feedback from teachers.
3. Practice key exam techniques and gain insight into what examiners expect.
4. Stay engaged with group activities and discussions, enhancing their understanding.
5. Reduce stress by keeping up with lessons and revision, rather than trying to catch up.

Consistent attendance leads to better preparation, stronger academic performance, and higher confidence during GCSE exams.



**“life is what you make it!”**

# Does Poor Attendance Really Make a Difference?



## 2024 GCSE Results

- **67 students** had 96-100% attendance - All hit target grade with 4 grades above
- **56 students** had 91-95% attendance - Some hit target grades with 4 grades below
- **50 students** had 0-90% attendance - All grades achieved below target

**“life is what you make it!”**

# Punctuality Also Matters!

- 3 minutes late to each lesson
  - 15 minutes per day
  - 2925 minutes per year
  - 50 lessons per year
  - 100 lessons across your GCSE course
- 
- 95% Attendance!



“life is what you make it!”



# Class Charts



- Classcharts is all about rewarding year 10s!
- Have you logged on? Are you checking your child's activity in school?
- We advise that you log on at least once a day and discuss the positives (and negatives if necessary) with students.
- If you require guidance on Class Charts please let us know at the end of the presentation.

**“life is what you make it!”**

# Working together





# Work Experience

Monday 24th March – Friday 28th March 2025

...

Mrs Ince-Sargeson

“life is what you make it!”

# Why are we launching Work Experience?

Work experience gives students the chance to learn about what type of job they might enjoy, and develop their CV.

- Real-world experience of how workplaces operate
- Build confidence
- Explore different career options
- Develop employability skills
- Connects school learning to the world of work
- Preparation for life beyond school

## The process

- Students will source their own placements.
- The school will use Unifrog to manage the administration process.
- Parents and School will check and agree to placement.
- Students will attend placements from Monday 24th March – Friday 28th March 2025.

# Finding a suitable placement - Consider the Wider Career Industry

## Explore related roles in your preferred industry

E.g., if shadowing an anaesthetist isn't possible, consider healthcare roles in dental practices or care homes

## Use transferable skills to broaden your options

Can't find experience as an air steward? Consider customer service roles, as they use similar skills.

## Look for placements connected to your favourite school subjects

Art & Design: Galleries, workshops, architectural firms

STEM Subjects: Factories, research labs, hospitals, pharmacies, IT companies, accounting firms

# What happens after a placement is agreed?

1. Following an agreement with an employer students will upload details to their Unifrog account.
- 2. Lead name, address, phone number, email address.**
3. Next employers will upload their risk assessment, liability insurance and health & safety policy.
- 4. Parental approval.**
5. School approval.
6. Placement preparation in school.
7. Placement begins.

The Unifrog logo is displayed in a bold, lowercase, teal-colored font. The letters are thick and rounded, with a slight shadow effect. The 'u' and 'f' are particularly prominent, with the 'f' having a long, thin vertical stroke that extends downwards. The 'o' and 'g' are also large and rounded, with the 'g' having a small tail that loops back up.

# How will we support?

Coaching & Form time - set and review goals, input information on Unifrog

Discuss suitability of different workplaces

Time and support to research potential employers during workshop time

How to approach a potential employer

How to behave on work experience



# How can you support?

Discuss at home potential placements and their suitability

Support planning travel to the place of work, suitable clothing, time management

Encourage, prompt and check that contact is made

Look out for an email from Unifrog when a placement has been agreed

# What's next?

School to re-share links to further information

Students to approach potential employers and agree a placement

Students upload information to Unifrog - deadline October half term

Contact Mrs Ince-Sargeson with any queries or concerns



# English



“life is what you make it!”



# What WE will do to support your young person?

As a team of staff we are here to:

- provide every revision material we have to help you practice
- guide you when you are uncertain
- give you our time to support you
- working with small groups to develop responses
- give you lots of praise for success
- listen and help!

My door is  
always open if  
you have any  
questions.

“life is what you make it!”

# 2 GCSE English LANGUAGE Exam Papers

Language Paper 1: 1 hour 45 mins

Explorations in creative reading and writing

Section A - Reading

Q1 - Find 4 things [4 marks]

Q2 - Language analysis [8 marks]

Q3 - Structure analysis [8 marks]

Q4 - Evaluate a statement [20 marks]

Section B - Writing

Q5 - Descriptive or creative writing [40 marks]

Language Paper 2: 1 hour 45 mins

Non Fiction Writers' viewpoints and perspectives

Section A - Reading

Q1 - Find 4 true statements [4 marks]

Q2 - Summary and synthesis skills [8 marks]

Q3 - Language analysis [12 marks]

Q4 - Comparison skills [16 marks]

Section B - Writing

Q5 - Non-fiction writing (letter, speech, essay, leaflet or article) [40 marks]

# 4 GCSE English LITERATURE Exam Papers

Literature Paper 1: 1 hour 45 mins

Section A - Shakespeare

'Romeo and Juliet' Essay – 30 marks + 4 marks for written accuracy

Section B - The 19th Century Novel

'Sign of Four' Essay – 30 marks

Literature Paper 2: 2 hours 15 mins

Section A:

'Inspector Calls' essay – 30 marks + 4 marks for accuracy

Section B:

'Power and Conflict' Poetry Essay - 30 marks

Section C

Unseen Poetry Analysis – 24 marks

Unseen Poetry Comparison – 8 marks



# Assessments

- 2 assessments per half term - one mini assessment and one ‘mock style’ assessment - typically a GCSE question.
- GCSE English Language and Literature have very few low mark questions - many of the questions are essay length and will be worth 16-40 marks.
- Ability to write at length, in detail and with fluency are key to success.

“life is what you make it!”

# Notice how close the grades are together!

Missing out a question could be catastrophic!

2023 English Language Grade Boundaries.

Grade 4	Grade 5	Grade 6	Grade 7	Grade 8	Grade 9
71/160 44%	81/160 50%	91/160 57%	102/160 64%	111/160 69%	121/160 76%

One or two extra marks per question could make a big difference!

2023 English Literature Grade Boundaries.

Grade 4	Grade 5	Grade 6	Grade 7	Grade 8	Grade 9
57/160 36%	72/160 45%	88/160 55%	104/160 65%	119/160 74%	135/160 84%

Pupils need to think carefully about which order to do the questions!



# Homework

A booklet will be set every half term. The booklet will have a variety of tasks to test knowledge and to allow students to practise skills.

- This terms homework will be given out tomorrow and will consist of 3 knowledge tasks to explore context and quotes and the final piece will be a GCSE style question that needs to be completed independently.
- Please see the website for other revision tasks that can be completed - INDEPENDENTLY.

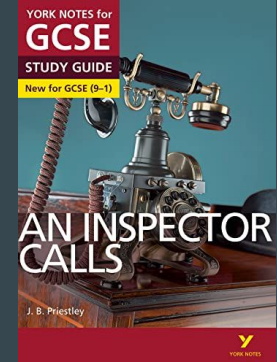
“life is what you make it!”

# Useful Learning Tools

- GCSE Pod
- Seneca Learning
- Mr Bruff Youtube videos
- York Notes Revision Guides



Talk to your child about their learning, what they know, how they are trying to secure their knowledge into long-term memory.



“life is what you make it!”



# Set texts will be available to ordered

- SCOPAY  
An Inspector Calls - this terms set text  
Romeo and Juliet - next terms set text

“life is what you make it!”



# GCSE Mathematics

...

# 3 GCSE Mathematics Exam Papers



Higher and Foundation tests are on the same days for same length of time.  
All papers are 1 hour and 30 minutes in length and are out of 80.

Paper 1	Paper 2	Paper 3
Non Calculator	Calculator	Calculator

Pupils will not know the content that is to be tested on each paper so should be fully prepared for any topic to come up. Some topics can be tested on more than one paper.

# GCSE Mathematics Higher and Foundation



## Higher - LCR, PMC, JDA, CST

### Based on Edexcel Higher Averages

KS4	GRADE
85%	9
73%	8
60%	7
47%	6
33%	5
20%	4
13%	3

## Foundation - LWL, LHO, LAT, SGR

### Based on Edexcel Foundation Averages

KS4	GRADE
76%	5
61%	4
45%	3
30%	2
14%	1



# Essential Equipment Required

- Scientific Calculator (Casio preferred)
- Black pen, pencil, ruler
- Maths Set





# Using End of Unit Analysis Grid to Revise...

All pupils complete one of these for each end of unit assessment. This allows pupils to track their progress to target for each unit.

<b>KS4 Target Grade:</b>		
<b>Personal Mathematics Target:</b>		
Unit	Score (%)	Grade
1. Congruence, Similarity & Enlargement		
2. Trigonometry		
3. Representing Solutions of Equations and Inequalities		
4. Simultaneous Equations		
Autumn Term Assessment		





# Using End of Unit Analysis Grid to Revise...

All pupils complete one of these for each end of unit assessment. We strongly encourage pupils to focus on the skills highlighted EBI as it was on these questions that your child scored zero or partial marks. Sometimes this happens when a pupil is secure in a skill but does not know how to apply the skill to the question.

Questions	Question Title	Score	WWW	EBI
1	Understand the difference between congruence and similarity	/2		
2	Enlarge a shape by a positive integer scale factor	/2		
3	Use parallel line rules to work out missing angles	/2		
4	Enlarge a shape by a fractional scale factor	/1		
5	Work out missing sides and angles in a pair given similar shapes	/4		
6	Use parallel line rules to work out missing angles	/3		



# Home Learning (Homework)

- An online homework task is set on Mathswatch weekly  
(This is to consolidate current and previous learning)
- Homework is set on Wednesdays, due the following Wednesday.
- Students should do extra on top of this when revising and preparing for exams and assessments.



# Home Learning (Homework)

- Feedback function on Mathswatch

L Holcroft  
06 Sep 2024, 1:43 PM [Edit](#)  
[Delete](#)

Turn all these into either a decimal or percentage.

**PUPIL**  
08 Sep 2024, 8:29 PM [Edit](#)  
[Delete](#)

I am still struggling with this

L Holcroft  
09 Sep 2024, 11:37 AM [Edit](#)  
[Delete](#)

$0.2 = 2/10 = 20\%$   
 $0.5 = 1/2 = 50\%$   
 $0.02 = 2/100 = 2\%$



# Home Learning (Revision)

We recommend that pupils watch the video, make a revision card and try the interactive questions.

The screenshot displays the MathsWatch website interface. At the top, the MathsWatch logo is on the left, and navigation links for Classes, Assignments, Users, Videos, Usage, Feedback, Extras, and Help are on the right. A user account for 'Louise' is logged in, with a 270-day renewal notice. Below the navigation bar, the page title is 'Clip 148 Enlargements'. There are three tabs: 'One Minute Maths', 'Interactive Questions' (which is highlighted in yellow), and 'Worksheet'. The main content area features a video player with a blue background and the text 'Clip 148' and 'ENLARGEMENTS'. The video player has a progress bar at the bottom showing 07:32. On the right side, there is a 'Find a Clip' sidebar with filters for Qualification (GCSE), Tier (All), Grade (All), and Topic (All). A search box contains the text '148'. Below the filters is a 'Choose Clip (1)' section with a table listing the clip:

Clip	Title
148	Enlargements



# Questions you may want to ask your child on a weekly basis

- Have you completed your homework on Mathswatch?
- Can you show me your completed homework?
- Can you show me what you have been working on this week as part of your revision in Maths?

# GCSE Science - What you need to know as a parent

...

# GCSE Science Lessons

- Combined Science - 5 lessons per week in Y10 and Y11
  - Two teachers in Y10, covering all three sciences
  - Pupils can sit higher or foundation tier GCSE papers
- 
- Separate (Triple) Science - 6 lessons per week in Y10 and Y11
  - Three teachers - one for each specialism
  - Additional timetabled hours for independent study
  - Pupils are expected to sit higher papers, aiming for 7+

<b>Exams</b>	<b>GCSE Combined Science</b>	<b>GCSE Separate Sciences</b>
<b>Number of papers</b>	6 (2 x biology, 2 x physics, 2 x chemistry)	6 (2 x biology, 2 x physics, 2 x chemistry)
<b>Exam time</b>	1 hour 15 minutes (7-1/2 hours of examination)	1 hour 45 minutes (10-1/2 hours examination)
<b>Marks per exam</b>	70 marks per paper	100 marks per paper
<b>Grading</b>	2 grades awarded (9-9 to 1-1, can achieve 5-4 etc)	Three grades awarded (9 to 1)



# Homework

## MUST

SENECA assignment on a topic covered last year

## SHOULD

Revision activity on a given subject (linked to the SENECA assignment)

This should be uploaded to a document on Google Classroom

Homework is revision based to support recall of previous topics - takes the pressure off Y11

### Homework 1 - BIOLOGY

You **MUST**:

- Complete the SENECA assignment called "SENECA homework 1".

You **SHOULD**:

- Make a revision resource on "Cells" (click [HERE](#) for revision ideas).
- **Upload** your revision to Google Classroom "Revision Homework Uploads". You could screenshot or take pictures of your revision and add it to the slides as evidence.

### Homework 2 - CHEMISTRY

You **MUST**:

- Complete the SENECA assignment called "SENECA homework 2".

You **SHOULD**:

- Make a revision resource on "Atomic Structure and the Periodic Table" (click [HERE](#) for revision ideas)
- **Upload** your revision to Google Classroom "Revision Homework Uploads". You could screenshot or take pictures of your revision and add it to the slides as evidence.

### Homework 3 - PHYSICS

You **MUST**:

- Complete the SENECA assignment called "SENECA homework 3".

You **SHOULD**:

- Make **five revision cards** to learn the five physics equations from the sheet (click [HERE](#) to open the sheet).
- Upload a picture of the revision cards you made to Google Classroom "Revision Homework Uploads".
- **Practice** the revision cards to learn them.

# Revision - Little and Often

- Fitting science revision into their regular practice is a great way of making it seem less overwhelming. Start with areas they find the hardest.

Resources	Techniques
<ul style="list-style-type: none"><li>○ Seneca learning</li><li>○ Revision Guides</li><li>○ Cognito - Practice papers and GCSE Questions</li><li>○ BBC bitesize</li><li>○ Lesson resources</li><li>○ Youtube videos (cognito)</li></ul>	<ul style="list-style-type: none"><li>○ Mind maps</li><li>○ Flash cards</li><li>○ Answering questions</li><li>○ Self quizzing</li></ul>



## Positive Attitude - Everyone can “do” Science!

- Science is a core subject, and science is part of all of our lives.
- Science is about questioning things, and asking why. It involves a set of skills that are applicable to all sciences, and life!
- Variables, method writing and graph skills are the same for every science paper. Once this skill is grasped, that is it!
- Try to ban phrases like “science isn’t for me”, “I don’t get it”, “I don’t need science”

# Where can I find out about the rest of my child's courses?



Teachers have provided an overview of some important information about courses and the focus in Y10.

These can be found on the school website where you will be able to find this digitally too .

Go to: Learning > Y10 course Information

# Homework

The screenshot shows the Shevington High School website. The header includes the school crest, the name 'Shevington High School', and a 'WELCOME' banner. A navigation menu is visible with categories: INFORMATION, LEARNING, PARENTS, NEWS, PUPILS, CONTACT, and ONLINE SERVICES. A 'Login' button is in the top right. A dropdown menu is open under 'LEARNING', listing: Curriculum Overview, Careers Information, SAIL Curriculum, College & 6th Form, Homework, Knowledge Organisers, Options 2024-2026, Year 10 Course Information, SAIL Delivery Overview, SEND Faculty, SMSC, and Subjects. The 'Homework' item is selected, and a sub-menu is open showing 'Homework Overview' and 'Half Term 1'. The background features a group of students in maroon uniforms.

https://www.shevingtonhigh.org.uk

Teachers have provided an overview of some important information about courses and the focus in Y10. You can collect paper versions tonight.

We are also populating a section of the school website where you will be able to find this digitally too .

Go to: Learning > Y10 course Information

# Requesting an Options Change

In the event that you wish to request an option change, this will only be possible in the first few weeks. After this point, students have missed too much to start a new course without it affecting their performance.

Options Changes can be requested via the Google Form on the Options page of our website. <https://www.shevingtonhigh.org.uk/learning/options/>

Changes can only be made if there is a space on the course requested and if the new subject can be fitted into the student's timetable alongside their other courses.

Where courses are full at the time of a request for a change, the student will be placed on a waiting list for the 1st few weeks of the course only.