

YEAR 7 ART FOUNDATION SKILLS -THE ABSTRACT



1. **Abstract-** Art that does not attempt to represent reality. **RAG**
2. **Line-** A path left by a moving point. Eg. horizontal, diagonal or curved. **RAG**
3. **Tone-** the degree of lightness or darkness of a shade or colour. **RAG**
4. **Shape-** Enclosed by a line. **RAG**
5. **Form-** A three dimensional shape (sphere, cube or cone)
6. **Texture-** the surface quality of something. Actual texture- how it feels or surface texture how it looks like it feels. **RAG**
7. **Colour-** 3 primary colours (Red, Yellow and Blue) Two primary colours mixed together make a secondary colour (Orange, Green or Purple) **RAG**
8. **Pattern-** A design created through repetition **RAG**
9. **Value-** How light or dark a colour is **RAG**
10. **Gradual Shade-**The slow process of shading from one colour to another **RAG**
11. **Process-**The steps it takes to make something **RAG**
12. **Mood-** The feeling an artwork creates **RAG**
13. **Symmetry-** The mirror image of something **RAG**
14. **Parallel-** Lines that never meet **RAG**
15. **Converging-** Two lines that meet at a point. **RAG**



Light



Medium Light



Medium



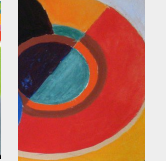
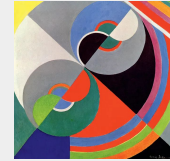
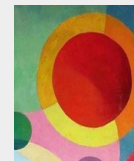
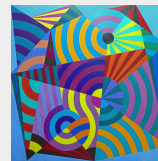
Medium Dark

Dark

FRANK STELLA & MATT W MOORE



STEPHEN CONROY & SONIA DELAUNAY



Equipment



2B, 4B, 6B



Colouring pencils



Watercolours

OVERVIEW

In this unit you will create an abstract piece of artwork to showcase your tonal skills.

THE BIG PICTURE

WHAT ARE WE LEARNING AND WHY?

CONSOLIDATE

Build on your knowledge from Key Stage 2.

NEW SKILLS

1. Ability to shade from dark to light
2. Ability to mix colours successfully



LINKS TO LEARNING

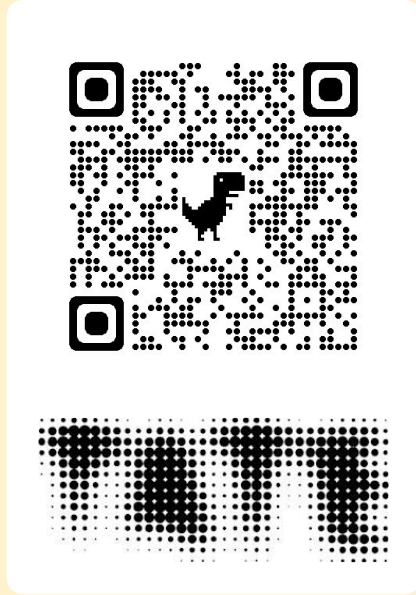
Maths- Working with compasses to create angles.

LINKS TO LIFE

Finding out about artists in the Real world.

YEAR 7 ART

FOUNDATION SKILLS -THE ABSTRACT

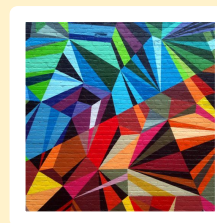
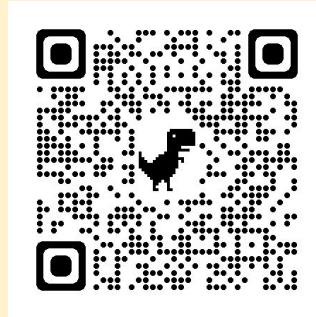


Scan me

FRANK STELLA



MATT W MOORE



YEAR 7 ART- Natural Form

1. **Tint-** When white is added to a colour. **RAG**
2. **Shade-** When black is added to a colour. **RAG**
3. **Tone-** Refers to the relative lightness or darkness of a colour. **RAG**
4. **Observational studies-** To draw a subject as accurately as possible. **RAG**
5. **Natural form-** An object found in nature that has not been changed or altered. **RAG**
6. **Zoom in-** Refers to picking a section of an image you find most interesting in and recording it at a larger scale. **RAG**
7. **Applied texture-** Refers to surface texture that adds a sense of depth or feel. **RAG**
8. **Pressure-** How hard or soft you press down with your pencil. **RAG**
9. **Kiln-** A type of large oven for baking pottery **RAG**
10. **Bone Dry-** Clay that is ready to be fired **RAG**
11. **Slip-** Liquid clay **RAG**
12. **Scoring-** Cutting or scratching the surface **RAG**
13. **Firing-** Applying heat to harden clay. **RAG**
14. **Relief-** A surface that is raised. **RAG**
15. **Overlaid-** A decorative or contrasting design placed over the top of another. **RAG**



ANTONI GAUDI

GEORGIA O'KEEFFE



KARL BLOSSFELDT



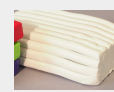
Equipment



2B, 4B, 6B



Colouring pencils



Clay



Oil pastel

OVERVIEW

In this unit you will create a clay tile inspired by natural form.

THE BIG PICTURE

WHAT ARE WE LEARNING AND WHY?

CONSOLIDATE

Your colour theory through mixing colours together.

NEW SKILLS

1. How to roll out, join and mould clay into a design idea.
2. Experiment with colour using oil pastels



LINKS TO LEARNING

Science- firing process- when clay is fired it experiences major physical and chemical changes
Design Technology- Ability to construct a design idea.

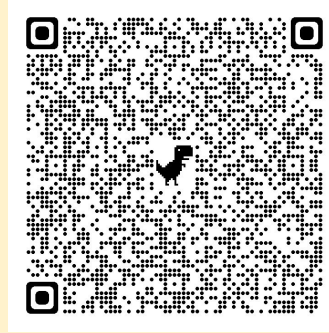
LINKS TO LIFE

Working with different materials

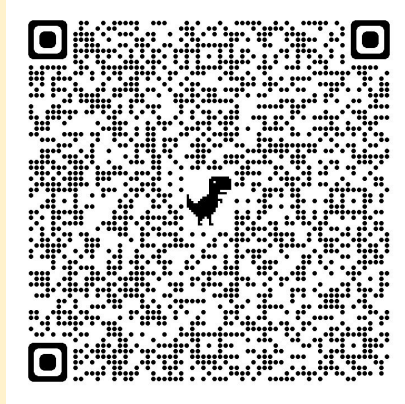
YEAR 7 ART

Natural Form

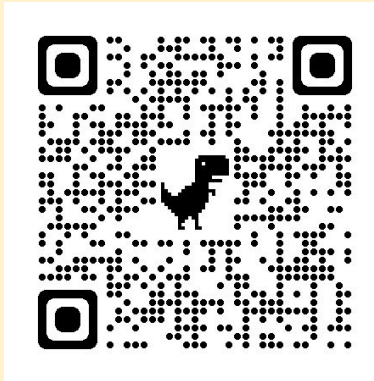
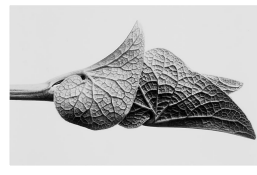
GEORGIA O'KEEFFE



ANTONI GAUDI



KARL BLOSSFELDT



Scan me