

YEAR 8 - REPRESENTATIONS... Tables and Probability

@whisto_maths

What do I need to be able to do?

By the end of this unit you should be able to:

- Construct a sample space diagram
- Systematically list outcomes
- Find the probability from two-way tables
- Find the probability from Venn diagrams

Keywords

Outcomes: the result of an event that depends on probability

Probability: the chance that something will happen

Set: a collection of objects

Chance: the likelihood of a particular outcome

Event: the outcome of a probability — a set of possible outcomes

Biased: a built in error that makes all values wrong by a certain amount

Union: Notation 'U' meaning the set made by comparing the elements of two sets

Construct sample space diagrams



Sample space diagrams provide a systematic way to display outcomes from events

The possible outcomes from tossing a coin

The possible outcomes from rolling a dice

	1	2	3	4	5	6
H	1H	2H	3H	4H	5H	6H
T	1T	2T	3T	4T	5T	6T

This is the set notation to list the outcomes $S =$

$$S = \{1H, 2H, 3H, 4H, 5H, 6H, 1T, 2T, 3T, 4T, 5T, 6T\}$$

In between the $\{ \}$ are a_i the possible outcomes

Probability from sample space

The possible outcomes from rolling a dice

The possible outcomes from tossing a coin

	1	2	3	4	5	6
H	1H	2H	3H	4H	5H	6H
T	1T	2T	3T	4T	5T	6T

What is the probability that an outcome has an even number and a tails?

This is the set notation that represents the question P

$$P(\text{Even number and Tails}) = \frac{3}{12}$$

In between the $()$ is the event asked for

There are three even numbers with tails

Numerator: the event

Denominator: the total number of outcomes

There are twelve possible outcomes

Probability from two-way tables

	Car	Bus	Walk	Total
Boys	15	24	14	53
Girls	6	20	21	47
Total	21	44	35	100

$$P(\text{Girl walk to school}) = \frac{21}{100}$$

The event

The total in the set

The total number of items

Product Rule

The number of items in event a

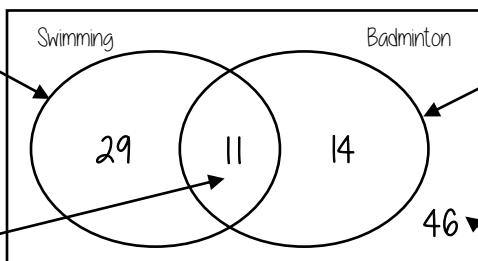
x

The number of items in event b

Probability from Venn diagrams

100 students were questioned if they played badminton or went to swimming club
40 went swimming, 25 went to badminton and 11 went to both

This whole curve includes everyone that went swimming
Because 11 did both we calculate just swimming by $40 - 11$



This whole curve includes everyone that went to badminton
Because 11 did both we calculate just badminton by $25 - 11$

$$P(\text{Just swimming}) = \frac{29}{100}$$

The intersection represents both
Swimming AND badminton

The number outside represents those that did neither badminton or swimming

$$100 - 29 - 11 - 14$$

YEAR 8 - REPRESENTATIONS...

Representing Data

@whisto_maths

What do I need to be able to do?

By the end of this unit you should be able to:

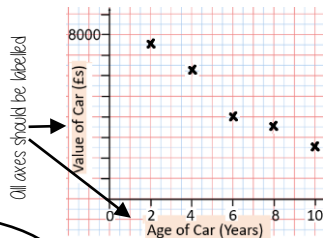
- Draw and interpret scatter graphs
- Describe correlation and relationships
- Identify different types of non-linear relationships
- Design and complete an ungrouped frequency table
- Read and interpret grouped tables (discrete and continuous data)
- Represent data in two way tables

Keywords

- Variable:** a quantity that may change within the context of the problem
- Relationship:** the link between two variables (items). Eg Between sunny days and ice cream sales
- Correlation:** the mathematical definition for the type of relationship.
- Origin:** where two axes meet on a graph
- Line of best fit:** a straight line on a graph that represents the data on a scatter graph
- Outlier:** a point that lies outside the trend of graph
- Quantitative:** numerical data
- Qualitative:** descriptive information, colours, genders, names, emotions etc
- Continuous:** quantitative data that has an infinite number of possible values within its range
- Discrete:** quantitative or qualitative data that only takes certain values
- Frequency:** the number of times a particular data value occurs

Draw and interpret a scatter graph

Age of Car (Years)	2	4	6	8	10
Value of Car (£s)	7500	6250	4000	3500	2500



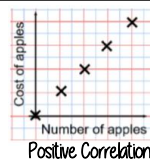
- This data may not be given in size order
- The data forms information pairs for the scatter graph
- Not all data has a relationship

"This scatter graph shows as the age of a car increases the value decreases"

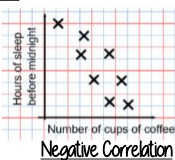
The link between the data can be explained verbally

The axis should fit all the values on and be equally spread out

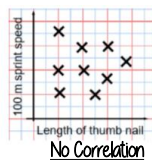
Linear Correlation



As one variable increases so does the other variable



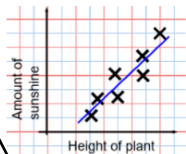
As one variable increases the other variable decreases



There is no relationship between the two variables

The line of best fit

The Line of best fit is used to make estimates about the information in your scatter graph



It is only an estimate because the line is designed to be an average representation of the data

It is always a straight line.

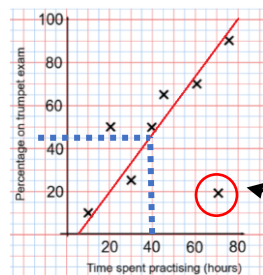
Things to know:

- The line of best fit **DOES NOT** need to go through the origin (The point the axes cross)
- There should be approximately the same number of points above and below the line (It may not go through any points)
- The line extends across the whole graph

Using a line of best fit

Interpolation is using the line of best fit to estimate values inside our data point

e.g 40 hours revising predicts a percentage of 45



Extrapolation is where we use our line of best fit to predict information outside of our data

This is not always useful - in this example you cannot score more than 100%. So revising for longer can not be estimated

This point is an "outlier" it is an outlier because it doesn't fit this model and stands apart from the data

Ungrouped Data

The number of times an event happened

The table shows the number of siblings students have. The answers were

3, 1, 2, 2, 0, 3, 4, 1, 1, 2, 0, 2

Number of siblings	Frequency
0	2
1	3
2	4
3	2
4	1

2 people had 0 siblings. This means there are 0 siblings to be counted here

0

3

$2 + 2 + 2 + 2$ OR $2 \times 4 = 8$

$3 + 3$ OR $3 \times 2 = 6$

4

2 people have 3 siblings so there are 6 siblings in total

Best represented by discrete data (Not always a number)

OVERALL there are
 $0 + 3 + 8 + 6 + 4$
Siblings = 21 siblings

Grouped Data

If we have a large spread of data it is better to group it. This is so it is easier to look for a trend. Form groups of equal size to make comparison more valid and spread the groups out from the smallest to the largest value.

Cost of TV (£)	Tally	Frequency
101 - 150	THH	7
151 - 200	THH THH	11
201 - 250	THH	5
251 - 300		3

Discrete Data
The groups do not overlap

We do not know the exact value of each item in a group - so an estimate would be used to calculate the overall total (Midpoint)

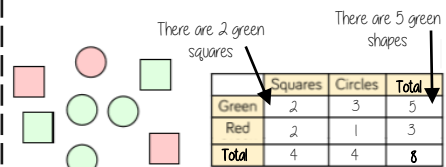
x	Frequency
Weight(g)	
$40 < x \leq 50$	1
$50 < x \leq 60$	3
$60 < x \leq 70$	5

Continuous Data
To make sure all values are included inequalities represent the subgroups

e.g this group includes every weight bigger than 60kg, up to and including 70kg

Representing data in two-way tables

Two-way tables represent discrete information in a visual way that allows you to make conclusions, find probability or find totals of sub groups



Using your two-way table

To find a fraction
 e.g What fraction of the items are red? $\frac{3}{8}$ red items
 but $\frac{8}{8}$ items in total = $\frac{3}{8}$

Interleaving: Use your fraction, decimal percentage, equivalence knowledge

YEAR 8 - REPRESENTATIONS...

Working in the Cartesian plane

@whisto_maths

What do I need to be able to do?

By the end of this unit you should be able to:

- Label and identify lines parallel to the axes
- Recognise and use basic straight lines
- Identify positive and negative gradients
- Link linear graphs to sequences
- Plot $y = mx + c$ graphs

Keywords

Quadrant: four quarters of the coordinate plane.

Coordinate: a set of values that show an exact position.

Horizontal: a straight line from left to right (parallel to the x axis)

Vertical: a straight line from top to bottom (parallel to the y axis)

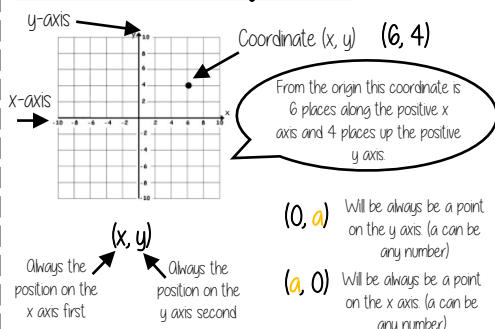
Origin: (0,0) on a graph. The point the two axes cross

Parallel: Lines that never meet

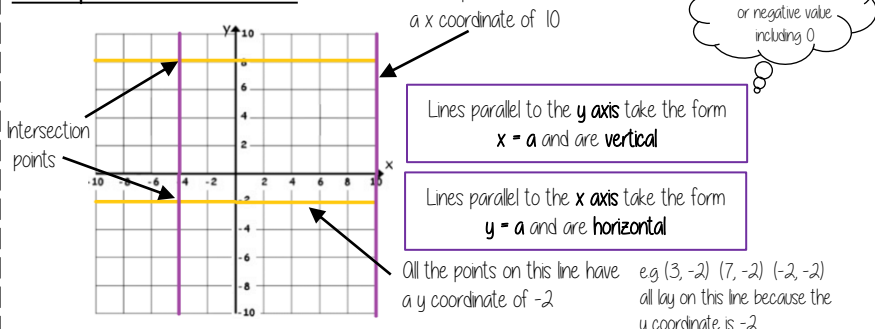
Gradient: The steepness of a line

Intercept: Where lines cross

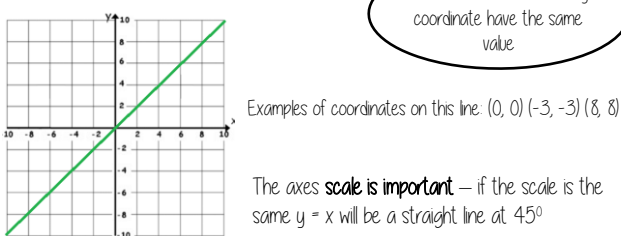
Coordinates in four quadrants



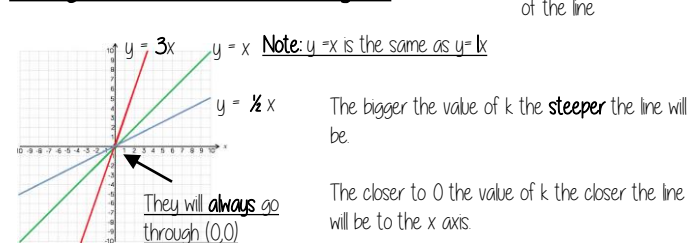
Lines parallel to the axes



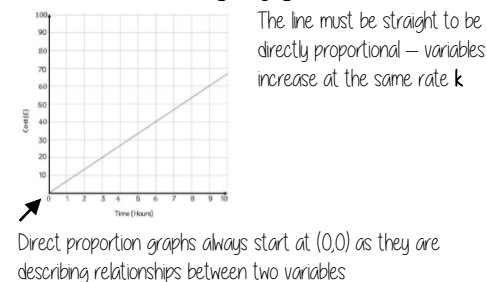
Recognise and use the line $y=x$



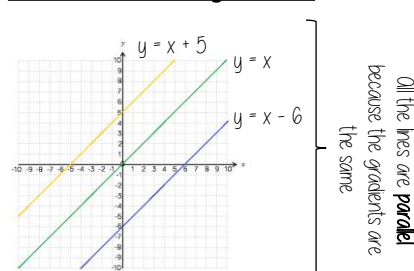
Recognise and use the lines $y=kx$



Direct Proportion using $y=kx$



Lines in the form $y = x + a$

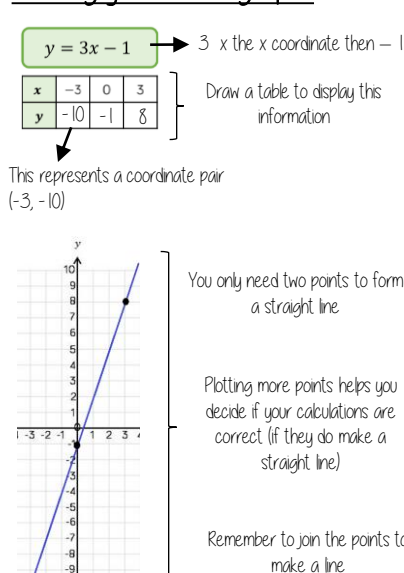


This is the line $y=x$ when the y and x coordinate are the same

This shows the translation of that line e.g. $y = x + 5$ is the line $y=x$ moved 5 places up the graph

5 has been added to each of the x coordinates

Plotting $y = mx + c$ graphs



Lines with negative gradients

