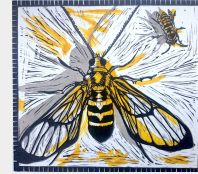


# YEAR 8 ART INSECTS

1. **Insects**- A small arthropod animal that has six legs and one or two pairs of wings **RAG**
2. **Mark Making**- The creation of patterns, lines, textures and shapes **RAG**
3. **Cross hatching**- Shading with intersecting parallel lines **RAG**
4. **Swirls**- to make a mark in a whirling motion **RAG**
5. **Hatching**- Shading with parallel lines **RAG**
6. **Texture**- The surface quality of something. Actual texture- how it feels or surface texture how it looks like it feels. **RAG**
7. **Experiment**- The process of trialing new ideas using a range of materials. **RAG**
8. **Lifecycle**-The series of changes that a living thing goes through from the beginning of its life until death. **RAG**
9. **Habitat**- The natural home or environment of an animal, plant, or other organism. **RAG**
10. **Anatomy**- The study of the structure or internal workings of something. **RAG**
11. **Composition**-The way in which different elements of an artwork are combined or arranged. **RAG**
12. **Printmaking**- The process of transferring an image or drawing. **RAG**
13. **Inspiration**- A burst of artistic energy from something you see. **RAG**
14. **Repetition**- When your drawing is repeated more than once. **RAG**
15. **Pointillism**- The process of drawing with small dots.



## ESHER & ALISON HEADLEY



## CLARE YOUNG



## Printing Techniques



Poly-printing

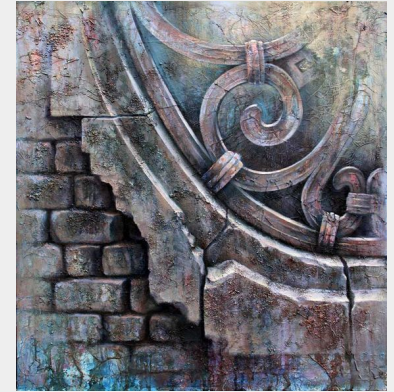
Oil pastel Transfer

Monoprinting

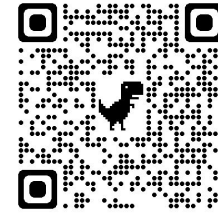
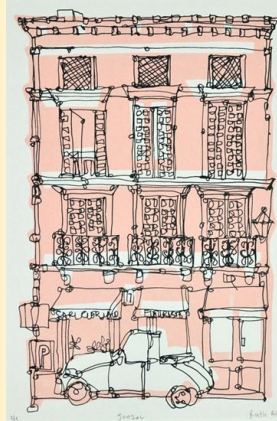
# YEAR 8 ART Crowded Architecture

1. **Architecture**- the art and technique of designing and building **RAG**
2. **Crowded**- Leaving little or no room for movement; packed. **RAG**
3. **Mark Making**- The creation of patterns, lines, textures and shapes **RAG**
4. **Cross hatching**- Shading with intersecting parallel lines **RAG**
5. **Swirls**- to make a mark in a whirling motion **RAG**
6. **Hatching**- Shading with parallel lines **RAG**
7. **Texture**- The surface quality of something. Actual texture- how it feels or surface texture how it looks like it feels. **RAG**
8. **Continuous line**- one in which a single, unbroken line is used to develop the image. **RAG**
9. **Illustrator**-a person who draws or creates pictures for magazines, books, advertising, etc **RAG**
10. **Erosion**- the geological process in which earthen materials are worn away and transported by natural forces such as wind or water. **RAG**
11. **Abstract**- art that does not attempt to represent an accurate depiction of a visual reality but instead use shapes, colours, forms and gestural marks to achieve its effect. **RAG**
12. **Composition**-The way in which different elements of an artwork are combined or arranged. **RAG**
13. **Environment**- the surroundings or conditions in which a person, animal, or plant lives or operates. **RAG**
14. **Tone**- Refers to how light or dark a colour is. **RAG**
15. **Repetition**- When your drawing is repeated more than once. **RAG**

Ian Murphy



Ruth Allen



Martyn Evans

