

English

Styles of writing to be covered

- Non-narrative explanation letter
- Narrative description
- Non-narrative recount
- Non-narrative: Non-chronological report

Grammar

- To begin to use the conjunction 'and' and 'but' to join ideas.
- To use full stops and capitals more accurately and consistently.
- Adjectives are used to describe and add detail to nouns.

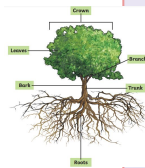
Maths

We are reading:

Science

Plants (A)

- How the weather changes
- Understand seasonal weather
- Understand the basic structure of a tree
- Understand there are different types of trees
- Explore the local environment



Mass

- Compare and measure mass using kg.

Numbers 50 to 100 and beyond

- Read, write, represent, compare and order numbers to 100.
- One more / fewer, ten more / fewer.
- Identify number patterns.

Addition and subtraction

- Explore addition and subtraction involving 2- digit numbers and ones.
- Represent and explain addition and subtraction with regrouping.
- Investigate number bonds within 20.

Money

- Name coins and notes and understand their value.
- Represent the same value using different coins.
- Find change.

Geography

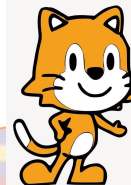
Hot and cold places

- What are different climates?
- Where are different hot and cold countries located?
- What is a cold location like?
- What is a hot location like?
- What differences are there between a hot and cold location?

Computing

Programming animations

- To become familiar with and explore ScratchJr
- To begin to create simple programs by following algorithms
- Learners will begin to amend and change a code to observe its impact
- Create their own programs that reflect a specified topic



Summer 1 Curriculum

Physical Education (PE)

This term your PE will be on: Thursday

Fundamental Focus	1. Sending and Receiving 2. Reaction Time
Sport Specific Focus	Games - Net
Whole child focus	Learning to: Relating to Emotions
	Learning about: Describing Types of Emotions

Religious Education

What does it mean to belong to Hinduism?

- Understand the importance of belonging in navigating life's challenges and experiences.
- Learn about the concept of karma and its impact on actions and consequences.
- Discover the significance of Brahman in Hinduism.
- Explore the life and teachings of Krishna.
- Discover how the practice of puja aids Hindus in leading a virtuous life.
- Understand the symbolism and significance of the Aum symbol in Hinduism.



- Trip to West Ham Park to explore the local area and the trees within it.

Curriculum
Enrichment

Pitch



Music

- Exploring sounds in the environment
- Singing in high and low voices
- Adding instruments to storytelling
- Writing down our music
- Performing our music

PSHE

Relationships

- To identify the members of my family and understand that there are lots of different types of families.
- To identify what being a good friend means to me.
- To know appropriate ways of physical contact to greet my friends and know which ways I prefer.
- To know who can help me in my school community.
- To recognise my qualities as a person and a friend.
- To tell you why I appreciate someone who is special to me.

ART

Sculpting the human figure

- Analyse an artwork
- Explore shadows
- Draw elongated figures
- Create a figure sculpture
- Draw from a sculpture

Click here to
go back to the
main page

Phonics GPCs

ire (fire)
are (care)
tch (watch)
oe (toe)
ph (phone)

[Click here or scan the QR code to see how to pronounce these split digraphs.](#)



Red words

people
again
their
through
climb
any
great

In the Spring Sunshine

<https://vimeo.com/731076564>



Warm Milk with Honey

<https://vimeo.com/731076564>



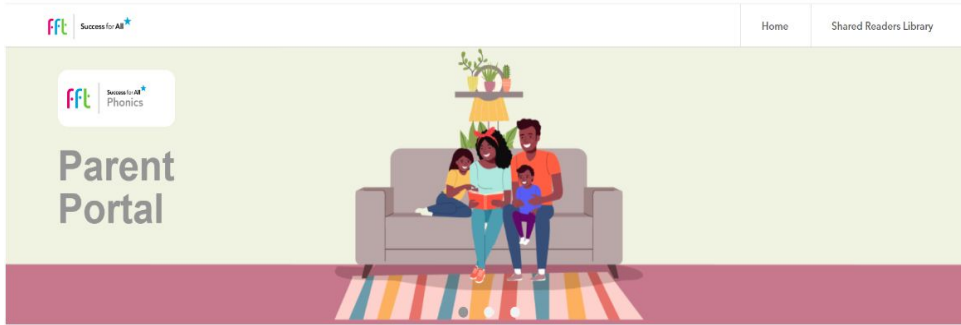
Can your child **apply** their phonics to **decode** and read these words?

tired deer heard
nightmare honey months
stretch itchy

Read these books at home with your child - scan the QR code or follow the link. You can also find these books and more on the FFT Parent Portal!



FFT Parent Portal



Home resources for parents and children

Enter your school code below to access our shared readers for children

Passcode:

Access to Daily Readers and useful phonics videos.
Go to: <https://parents.fft.org.uk/>
Type in school code: z1f42n