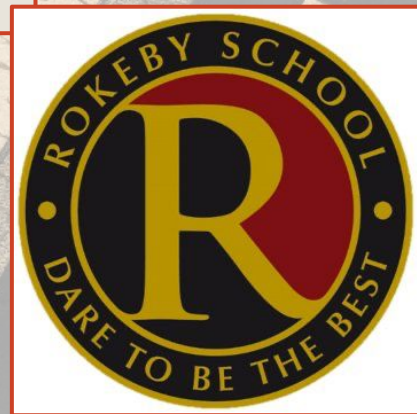


# GCSE Art

**In year 10 & 11**



# What can you expect?

- Hands on course that focuses on experimenting with a range of mediums and techniques.
- An increase in homework tasks (artist analysis, taking and editing photographs and observational drawing are typically set).
- Opportunities to develop skills in painting, drawing, photography, sculpture, printing collage and more!
- End of course exhibition to showcase the work you have created during your GCSE.
- One hour of intervention per week.



# What are the exams/assessments like?

## COMPONENT 1: Portfolio

### What's assessed

A portfolio that shows coverage of the **four** assessment objectives. It must include **2 sustained projects** evidencing the journey from initial engagement to the realisation of intentions and a selection of further work undertaken during the student's course of study. Responses will include evidence of drawing for different purposes and needs and written annotation.

### How it's assessed

- No time limit.
- 60% of GCSE.
- Projects are set and marked by teacher and moderated by AQA.

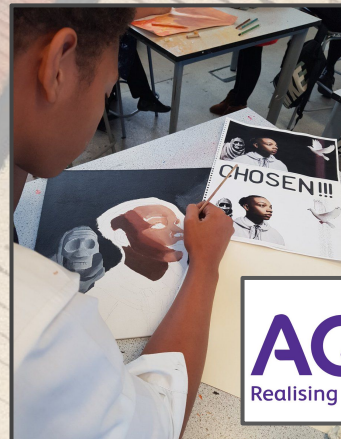
## COMPONENT 2: Externally set assignment

### What's assessed

Students respond to their chosen starting point from an **externally set** assignment paper (exam paper) relating to their subject title, evidencing coverage of all **four** assessment objectives.

### How it's assessed

- Preparatory period followed by 10 hours of supervised time (exam).
- 40% of GCSE.
- Projects are set by AQA and marked by teacher then moderated by AQA.



# Where will it take you?

## At college:

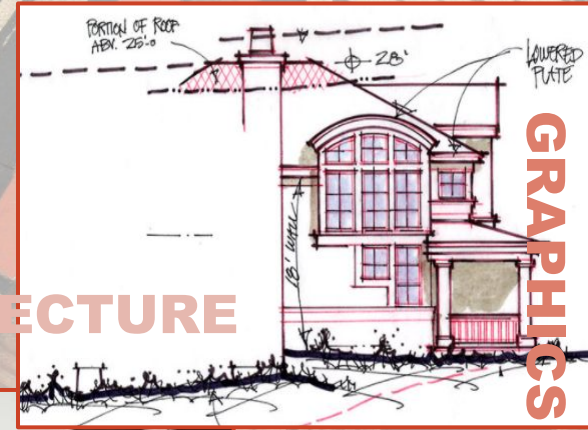
- A level Art & Design.
- A level Fine Art.
- A level Design & Technology

## Careers:

- Graphic designer / illustrator / photographer
- Artist: Printer / painter / sculptor
- Theatre: set design / costumes
- Buyer: art / fashion
- Gallerist: working in or owning a gallery
- Education: school / college / university



ARCHITECTURE



GRAPHICS



FINE ARTIST

SCULPTURE /  
CERAMICS



ILLUSTRATION

# Questions?



If you have any questions see Ms Mishra in Room F19  
Email:[ankita.mishra@rokeby.ncltrust.net](mailto:ankita.mishra@rokeby.ncltrust.net)

Respect

Success

Passion for learning

Personal Challenge

Harmony