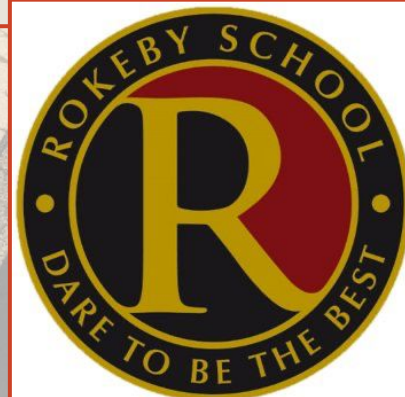
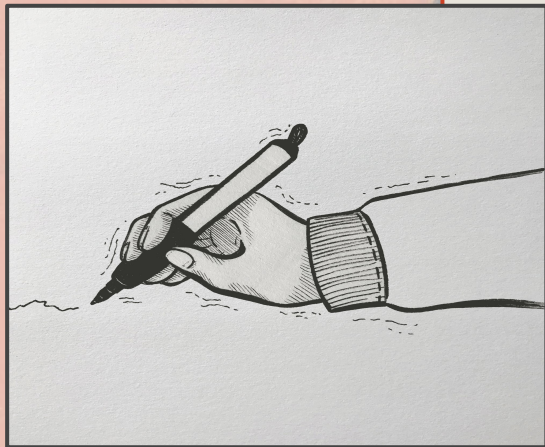




GCSE Art

In year 10 & 11



What can you expect?

- Hands on course that focuses on experimenting with a range of mediums and techniques.
- An increase in homework tasks (artist analysis, taking and editing photographs and observational drawing are typically set).
- Opportunities to develop skills in painting, drawing, photography, sculpture, printing collage and more!
- End of course exhibition to showcase the work you have created during your GCSE.
- One hour of intervention per week.



What are the exams/assessments like?

COMPONENT 1: Portfolio

What's assessed

A portfolio that shows coverage of the **four** assessment objectives. It must include **2 sustained projects** evidencing the journey from initial engagement to the realisation of intentions and a selection of further work undertaken during the student's course of study. Responses will include evidence of drawing for different purposes and needs and written annotation.

How it's assessed

- No time limit.
- 60% of GCSE.
- Projects are set and marked by teacher and moderated by AQA.

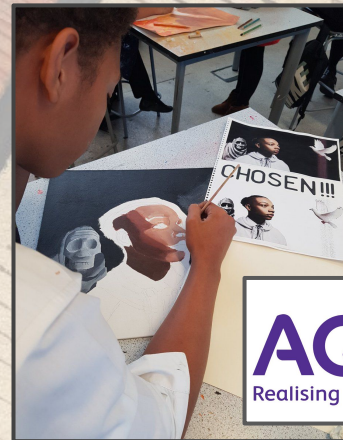
COMPONENT 2: Externally set assignment

What's assessed

Students respond to their chosen starting point from an **externally set** assignment paper (exam paper) relating to their subject title, evidencing coverage of all **four** assessment objectives.

How it's assessed

- Preparatory period followed by 10 hours of supervised time (exam).
- 40% of GCSE.
- Projects are set by AQA and marked by teacher then moderated by AQA.



Where will it take you?

At college:

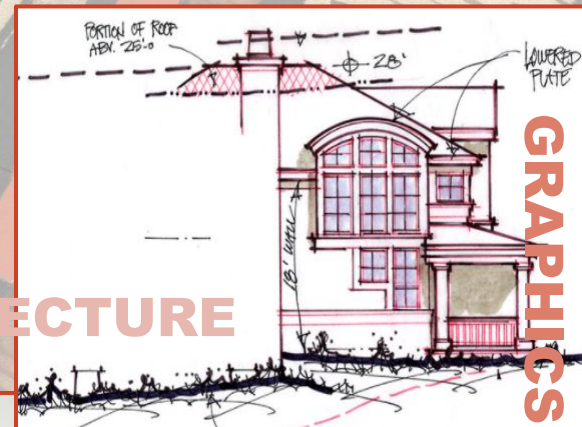
- A level Art & Design.
- A level Fine Art.
- A level Design & Technology

Careers:

- Graphic designer / illustrator / photographer
- Artist: Printer / painter / sculptor
- Theatre: set design / costumes
- Buyer (art / fashion).
- Gallerist (working in or owning a gallery)
- Education (school / college / university).



ARCHITECTURE



GRAPHICS



FINE ARTIST

SCULPTURE /
CERAMICS



ILLUSTRATION

Questions?



If you have any questions see Ms Roberts in Room
F18

Email: laurie.robertsdownie@rokeby.newham.sch.uk

Respect

Success

Passion for learning

Personal Challenge

Harmony