



RIDGEWAY
SECONDARY SCHOOL

STUDENT AND FAMILIES HANDBOOK



TABLE OF CONTENTS

HEADTEACHER'S WELCOME

THE SHIRES MAT

THE MOST IMPROVED SCHOOL IN ENGLAND

WHAT MAKES RIDGEWAY DIFFERENT

SUPPORTING YOU AND YOUR CHILD

SPECIAL EDUCATIONAL NEEDS

PARENT CARER FORUM

ENSURING A SMOOTH TRANSITION

WORKING IN PARTNERSHIP

GETTING TO KNOW YOU AND YOUR CHILD

ATTENDANCE

SAFEGUARDING

THE SCHOOL DAY

READING AT RIDGEWAY

TUTOR TIME

KS3 & 4 CURRICULUM

PERSONAL DEVELOPMENT AND EXTRA CURRICULAR

CAREERS

COMMUNITY LINKS

ELITE PERFORMANCE

PASTORAL SUPPORT

HELPING YOUR CHILD SUCCEED

UNIFORM & PE KIT

EQUIPMENT

TRANSPORT

HOME SCHOOL AGREEMENT

CATERING

TERM DATES

PAGE

01

02

03

07

08

09

11

13

14

15

16

19

20

21

22

23

25

27

29

32

33

35

38

40

42

43

49

50





HEADTEACHER'S WELCOME



Welcome to Ridgeway Secondary School

As the proud Headteacher of our wonderful school, it is my pleasure to welcome you to our school as the class of 2030. We are a small school with a big heart, and we believe that our close-knit community creates a special place to be.

At Ridgeway, we strive to create an environment where everyone feels valued and respected. We are proud to be a place where people want to work, students want to study, and our partners want to collaborate with. Our friendly community is built on mutual respect and support.

Our school ethos is Ridgeway 360°, which focuses on developing the whole person. We believe in nurturing our students' academic, social, physical and mental growth and are committed to Ridgeway 360° for all our students and staff. Ridgeway 360° is at the heart of what it means to be at our school and underpins everything we do. Our highest standards and expectations help our students to achieve their full potential in all areas of their lives and equip them to meet the challenges of the next steps they take.

One of the things that we are particularly proud of at Ridgeway is the excellent behaviour and manners displayed by our students. Our students are polite, respectful, and well-behaved, creating a positive and harmonious atmosphere for everyone.

We are dedicated to providing the very best opportunities and experiences for our students both inside and outside the classroom. Our committed staff work tirelessly to deliver a broad, varied, and exciting curriculum that challenges and inspires our students to be the best they can be. Through everyday excellence, we encourage all our students and staff to strive for their personal best.

We are a school with big ambitions and a big future. This is an exciting time to be at Ridgeway, a time of change, where the rapid improvements we have made are becoming embedded. We are all working tirelessly to be the very best that we can be, becoming a great, small secondary school where students develop into fully rounded people and achieve excellent results.

I invite you to explore our website and discover more about the amazing things happening at Ridgeway. If you have any questions or would like further information, please do not hesitate to get in touch. We look forward to welcoming you to our school community.

Mr M Ball
Headteacher

SHIRES MULTI ACADEMY TRUST (SHIRES MAT)



Shires Multi Academy Trust (MAT) is a collaborative educational organisation that was established in September 2020. Initially comprising three schools, the Trust has expanded to include six academies, five located in Worcestershire and one in South Warwickshire.

Our Schools:

- **Astwood Bank Primary School:** An oversubscribed two-form entry primary school with 420 pupils. Many students transition to either Ridgeway Secondary or Studley High after Year 6.
- **Feckenham CE Primary School:** Situated in Worcestershire, this rural school serves approximately 100 pupils from both the village and the nearby town of Redditch.
- **North Bromsgrove High School:** A 13–18 high school serving Bromsgrove families, with a student population nearing 1,100.
- **Ridgeway Secondary School:** An 11–16 secondary school located in Astwood Bank, Redditch, with 420 pupils enrolled.
- **Studley High School:** An oversubscribed 11–16 secondary school in Warwickshire, accommodating 850 pupils.
- **Webheath Academy Primary School:** A two-form entry primary school in Redditch with 420 pupils, many of whom progress to Studley High or Ridgeway Secondary after Year 6.

The Trust operates on a collaborative model, granting schools significant autonomy to focus on their unique communities while benefiting from shared systems in safeguarding, finance, IT, HR, health & safety, SEND, improvement planning, quality assurance, and professional development.

By fostering collaboration among its schools, Shires MAT aims to enhance educational outcomes and provide high-quality learning experiences for all students within the Trust.





THE MOST IMPROVED SCHOOL IN ENGLAND

At Ridgeway Secondary School, we are elated to be recognised as **England's most improved secondary school**. According to the latest Department for Education (DfE) league tables, our school has ascended 2,266 ranking places, distinguishing us as the most improved state secondary school in England.

In 2023, Ridgeway Secondary School held a **Progress 8 score of -0.62**, ranking **2,877th** out of 3,372 secondary schools in the country—placing it in the **bottom 15%** of schools nationally. Today, Ridgeway boasts a **Progress 8 score of +0.43**, placing it **611th in the country** and firmly within the top 18% of schools nationwide.

These outstanding results are the product of **relentless improvement**, driven by sheer hard work, resilience, and a determination to be the very best for the young people it serves. Ridgeway's transformation comes alongside a **12% increase in student numbers** in one year, with a further **20% increase projected** for September 2025, reflecting growing confidence from parents and the wider community.

Shires Trust Supporting the Progress of Ridgeway Secondary School

Shires Trust has played a pivotal role in supporting the continued progress of Ridgeway Secondary School, offering a range of valuable resources and expertise. Through financial support, the Trust has helped ensure the school has the necessary funding for key projects, infrastructure improvements, and educational initiatives.

Beyond finances, Shires Trust has bolstered Ridgeway's growth by providing additional staffing, enhancing both teaching and administrative capabilities to meet the school's evolving needs.

Additionally, the Trust has facilitated the sharing of best practices across its network, enabling Ridgeway's staff to benefit from the knowledge and experience of colleagues within the Trust. This collaborative approach has fostered a culture of continuous improvement, driving innovation in teaching methods and enhancing student outcomes. Through these combined efforts, Shires Trust remains a steadfast partner in Ridgeway's ongoing success and development.



GCSE Results: A Testament to Excellence

Progress 8 Score: Improved from -0.62 in 2023 to $+0.43$ in 2024, indicating extraordinary advancement in student progress across eight key subjects.

Leading the Way for Boys' Progress


Ridgeway has also been recognised as the **most improved school for boys' progress**. The Progress 8 score for boys rose by an extraordinary **1.31 points**, from -0.81 in 2023 to **$+0.5$ in 2024**. In 2023, the school was ranked 2,678th in the country for boys' progress. Now, we have climbed to **332nd**, a phenomenal **leap of 2,346 places**, placing the school in the top 10% of schools nationally for boys' progress. We are also proud to be ranked **top in Worcestershire for boys' overall progress**.

Outstanding Progress in the EBacc

The transformation extends to the school's performance in the **English Baccalaureate (EBacc)**, where we recorded a remarkable **progress improvement of 1.25 points** in just one year. The EBacc Progress 8 score rose from -0.58 in 2023 to an impressive **$+0.67$ in 2024**. **We are ranked top in Worcestershire for progress in the EBacc.**

Exceptional Progress in Core Subjects

The school's success extends to **English, Maths, and Science**, where the school has achieved phenomenal progress:

- **Science:** With a **value-added score of $+0.94$** , Ridgeway is **ranked 139th nationally**, placing our Science progress in the **top 4% of schools in the country**. This represents a **leap of 1,907 places** in just one year. We are also recognised as the **top school in Worcestershire for value-added in Science**.
 - **Maths:** Progress in Maths improved by an extraordinary **1.09 points**, from -0.46 in 2023 to **$+0.63$ in 2024**, earning Ridgeway the title of **top in Worcestershire for Mathematics progress** and the third most improved in the country.
 - **English:** English progress saw an impressive increase of **0.98 points**, rising from -0.51 in 2023 to **$+0.47$ in 2024**. We are ranked **second in Worcestershire for progress in English** and the fifth most improved English progress in the country.
- 



Regional and Local Performance

- First in Redditch for Progress 8
- Second in Worcestershire for Progress 8
- First in Worcestershire for Progress in Mathematics
- First in Worcestershire for Disadvantaged Students' Progress in Mathematics and the Ebacc
- First in Worcestershire for value added in Science
- First in Worcestershire for Overall Progress for Boys
- Second in Worcestershire for progress in English
- First in Worcestershire for Progress in the Ebacc

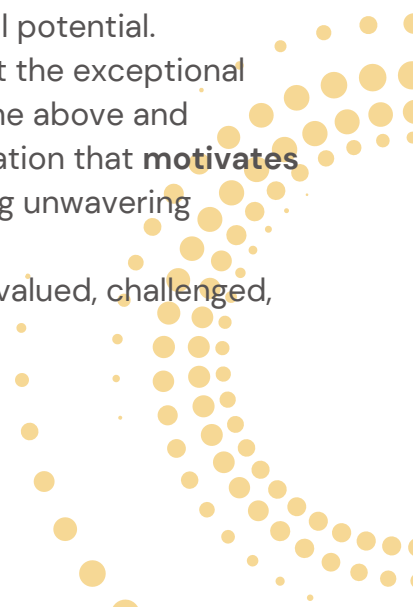
From Inadequate to Outstanding Progress

This achievement is even more remarkable given the school's history. In October 2021, Ridgeway Secondary School was judged as Inadequate by Ofsted. Since then, our dedicated team of staff have worked tirelessly to rebuild and transform the school. At the heart of this transformation lies a **culture of excellence, high expectations, and a commitment to developing the whole person.**

This transformation was driven by a commitment to the highest standards and a belief that every child can succeed. Through high quality teaching, high expectations, consistently applied routines and a supportive and aspirational school culture, **Ridgeway has become a model for school improvement.**

A Culture of Hard Work, Discipline, and Excellence

At the heart of our success is a school culture firmly rooted in hard work, discipline, and excellence. The school is about more than just numbers—it's about **people**. Our transformation has been built on the foundation of **strong relationships between students and staff**, fostering an environment of trust, respect, and shared ambition. These bonds have empowered students to strive for excellence and achieve their full potential. This **remarkable transformation** would not have been possible without the exceptional support and dedication of our staff and parents. Our teachers have gone above and beyond to inspire and guide our students, delivering high-quality education that **motivates and empowers**. Similarly, our parents have played a crucial role, offering unwavering encouragement and partnership in supporting their children's success. Together, we have cultivated an environment where every individual is valued, challenged, and supported to achieve their full potential.





Looking Ahead

Ridgeway Secondary School is excited to continue its upward trajectory, building on its successes to create even greater opportunities for its students.

The fantastic results that our students have achieved are proof that with hard work and belief in yourself, **anything is possible**. Their success is not only well-deserved but also **inspirational**. They have set a new benchmark for what can be achieved at Ridgeway and shown every student at this school that **excellence isn't just a dream** – it's a reality waiting to be achieved with enough dedication. This transformation is a shining example of how vision, resilience, and a commitment to high standards can bring about extraordinary change.

This historic progress is a **collective triumph**, reflecting the unity and commitment of the entire Ridgeway Secondary School community. We are proud of the hard work and dedication that have made these achievements possible, setting a new benchmark for educational excellence and a platform to continue a legacy of excellence by students who attend the school in future years.

As we celebrate this milestone, we remain focused on sustaining and building upon these accomplishments, ensuring that Ridgeway Secondary School continues to thrive and provide outstanding opportunities and educational outcomes for all our students.

WHAT MAKES RIDGEWAY SECONDARY SCHOOL DIFFERENT?

At Ridgeway Secondary School, we believe in creating an exceptional learning environment where every student can thrive. Our core principles ensure that all students receive the highest quality education in a safe, structured, and supportive setting.

Disruption-Free Learning

Learning is at the heart of everything we do. Our classrooms are calm, focused, and free from disruption so that every student can engage fully in their lessons. We have clear expectations for behaviour and strong routines to ensure that teachers can teach and students can learn without interruption.

Exceptional Behaviour

We set the highest standards for behaviour, both inside and outside the classroom. Our students demonstrate respect, responsibility, and resilience every day. We have a clear and fair behaviour policy that supports all students in making positive choices and ensures that Ridgeway remains a respectful and inclusive community.

Routines That Create a Safe, Welcoming Environment

We believe that structure and consistency help students feel safe and supported. From morning arrival to lesson transitions and end-of-day dismissal, our routines are designed to create a positive, predictable environment where every student feels valued and ready to learn.

Expert Teaching in Every Subject

Our teachers are specialists in their subjects and passionate about delivering engaging, high-quality lessons. We invest in professional development to ensure that our staff are always refining their teaching practice. Every student at Ridgeway benefits from expert teaching that challenges them to think critically, develop new skills, and reach their full potential.

An Exceptional Enrichment Offer

Education goes beyond the classroom. Ridgeway offers a wide range of enrichment activities, from competitive sports teams and performing arts to academic clubs and leadership opportunities. Whether a student is passionate about music, technology, debating, or outdoor pursuits, there is something for everyone to explore, grow, and succeed.

At Ridgeway Secondary School, we are committed to providing a first-class education that prepares students for success in school and beyond. We take pride in our unique approach, and we look forward to working in partnership with students and families to create an outstanding experience.

SUPPORTING YOU AND YOUR CHILD

At our small yet ambitious secondary school, we understand the pivotal role that comprehensive pastoral and academic support plays in fostering a nurturing environment for our students and their families. Recognising that education extends beyond the classroom, we have developed a robust support package aimed at addressing the diverse needs of our students and creating a collaborative partnership with their families.

Our commitment to academic excellence is underpinned by a multifaceted approach to pastoral care. We believe that a supportive and inclusive environment is crucial for students to thrive both academically and personally. To achieve this, we offer a wide range of opportunities for students to engage in extracurricular activities, ensuring that their interests and talents are nurtured beyond the standard curriculum.

One cornerstone of our support system is the series of parental workshops we organise regularly. These workshops serve as a platform for open communication between parents, teachers, and administrators. Topics covered include effective communication with teenagers, study habits, and navigating the challenges of adolescence. By fostering a strong partnership with parents, we aim to create a cohesive support network that extends beyond the school gates.

Early help is another integral component of our support package. Recognising that some students may face challenges that require immediate attention, we provide targeted interventions to address issues before they escalate. This proactive approach ensures that students receive the support they need promptly, allowing them to overcome obstacles and continue on their academic journey with confidence.

Furthermore, our commitment to a holistic education is reflected in the diverse range of opportunities we offer. From leadership programs to community service initiatives, students have the chance to explore their interests and develop essential life skills that go beyond the academic realm.

In conclusion, our small, ambitious, and nurturing secondary school goes above and beyond to support both students and their families. Through a comprehensive pastoral and academic support package, including parental workshops, early help, and a wide range of opportunities, we strive to create an environment where every student can flourish and reach their full potential.

SPECIAL EDUCATIONAL NEEDS

At Ridgeway Secondary School, we are committed to ensuring that every student, regardless of their individual needs, receives the highest quality education and support. We believe that all students deserve to thrive in a nurturing, inclusive environment where they feel safe, valued, and empowered to achieve their full potential.

Tailored Support for Every Student

We understand that every child is unique. Our SEND team works closely with students, parents, and teachers to provide tailored support that meets individual needs. Through personalised learning plans, targeted interventions, and one-to-one support where required, we ensure that students with SEND receive the help they need to succeed.

A Safe and Happy Learning Environment

We take pride in creating a school environment where all students feel safe, respected, and included. Our routines, high expectations, and strong pastoral care structure help SEND students feel secure and confident in their learning journey. It is a testament to our approach that 100% of parents with a child with SEND feel their child is safe and happy at Ridgeway.

Collaboration with Parents and Families

We believe that a strong partnership between school and home is key to a student's success. Our SEND team works closely with families, keeping communication open and ensuring parents are involved in key decisions about their child's education. This commitment to collaboration is reflected in the fact that **90% of parents feel their child with SEND receives excellent support.**

High-Quality Teaching and Inclusive Classrooms

At Ridgeway, students with SEND are fully included in every aspect of school life. Our teachers are trained in adaptive teaching strategies to ensure that lessons are accessible and engaging for all learners. We provide high-quality classroom support and use evidence-based interventions to help students overcome challenges and build confidence.

Exceptional Enrichment and Wider Opportunities

We believe in developing the whole child, and that includes offering students with SEND access to the full range of enrichment activities at Ridgeway. From sports teams and creative arts to leadership programmes and academic clubs, we encourage all students to discover new interests and develop important life skills beyond the classroom.

A School That Families Trust

Our commitment to supporting students with SEND is reflected in the overwhelming confidence that families place in us. An incredible **98% of parents would recommend Ridgeway** to another parent – a true reflection of the care, dedication, and excellence that define our approach.

At Ridgeway, we believe that every child can succeed with the right support. We are proud to provide an inclusive, nurturing, and ambitious environment where students with SEND feel supported, challenged, and inspired to achieve their best.

OUR SEND TEAM:



MR J WORTON
DEPUTY HEAD,
OVERSIGHT OF SEND



MRS S TREVETHICK
SENDCO



MRS M MCNAMEE
ASSISTANT SENDCO

PARENT CARER FORUM

EMPOWERING FAMILIES. SUPPORTING STUDENTS. STRENGTHENING COMMUNITY.

At Ridgeway Secondary School, we believe that a strong partnership between school and home is key to every child's success. Our Parent Carer Forum is a dedicated space where parents and carers can connect, share, and collaborate with the school in a meaningful way.

What is the Parent Carer Forum?

The Parent Carer Forum is a supportive network for all parents and carers of Ridgeway students. It's a space to:

- Be heard and valued.
- Share experiences and ideas.
- Work collaboratively with the school to enhance student wellbeing and inclusion.

We focus on creating an open dialogue and building trust so that every family feels part of the Ridgeway community.

Our Focus Areas

Family Wellbeing

We recognise the importance of supporting the whole family. The Forum discusses topics such as mental health, emotional resilience, community wellbeing and all things SEND. We also provide resources and links to local and national support services.

Transition Support

Moving between key stages or into secondary school can be challenging. We work with families to smooth transitions, whether your child is starting Year 7 or preparing for post-16 education.

Understanding Pastoral & SEND Support

We aim to help parents and carers better understand the vital roles of our Pastoral and SEND (Special Educational Needs and Disabilities) teams. Learn how they support your child's emotional, social, and learning needs and how you can work alongside them.

Liaising with Parental Ambassadors

Two Parent Ambassadors are available to help you navigate school life. They serve as friendly points of contact, listen to your feedback, and represent parent voice within school development plans.

Signposting to Support & Early Help

If your family is facing challenges, we can guide you to the right support. Whether it's early help services, counselling, financial advice, or parenting courses—we're here to connect you with what you need.

Join the Conversation

The Parent Carer Forum meets termly, with both in-person and online options to ensure accessibility for all. You don't have to attend every session—just come when you can, and know that your voice matters.

Next Forum Meeting: Monday 23rd June at 9:30 (Transition Focus)

Location: School Library

Contact: pcf@rss.shiresmat.org.uk

Meet Your Parent Ambassadors

Anya Hassam – Parent of a Year 8 student

Becky Ryan– Parent of a Year 10 student

Our ambassadors are here to listen and support. Whether you have questions, ideas, or just need a chat – reach out anytime.

Email: pcf@rss.shiresmat.org.uk

Get Involved

Interested in joining the Forum, or just want to stay in the loop?

- ✓ Follow the Shire SEND Community on Facebook to stay up to date with events
- ✓ Volunteer to help at events
- ✓ Share your experiences with other parents
- ✓ Become a parent ambassador

ENSURING A SMOOTH TRANSITION

We understand that the transition to secondary school is a significant milestone for both you and your child. At Ridgeway Secondary School, we prioritise the seamless integration of our new students, ensuring that each child feels supported, welcomed, and part of the Ridgeway Family from the very beginning.

Our comprehensive transition programme is designed to ease the anxieties of both parents and students alike. Key conversations with staff from both the primary and secondary schools are a fundamental aspect of this initiative. This ensures that important information is shared, concerns are addressed, and a clear understanding of each child's needs is established, creating a foundation for a successful transition.

To further acclimate our new students, we organise three key dates where they visit the school before the academic year begins. These visits allow them to familiarise themselves with the surroundings, meet their future teachers and classmates, and gain a sense of comfort within the school environment. These intentional steps foster a smooth transition and help students build a sense of belonging.

For students with additional needs, we provide extra transition support, tailored to their unique requirements. Our dedicated team works closely with both parents and external specialists to create personalised plans, ensuring that every student, regardless of their challenges, has the resources and support necessary to thrive at Ridgeway Secondary School.

Rest assured, our commitment to your child's well-being and successful integration is unwavering. We look forward to welcoming your child into the Ridgeway Family, where they will find not just an academic institution, but a supportive community invested in their growth and development.

Next Steps:

Dates to remember:

1. **1st & 3rd July SEND and Additional Needs Transition Day**
2. **8th and 9th July – School Transition Days**
3. **9th July 4-7pm Parental Welcome and Meet the Tutor (Compulsory Evening)**



WORKING IN PARTNERSHIP

At Ridgeway Secondary School, we believe in the power of collaboration among parents, students, and the school community to achieve common goals. Our commitment to fostering a supportive and harmonious environment is reflected in the emphasis we place on close cooperation between these integral stakeholders.

A cornerstone of our approach is the strong focus on maintaining an open channel for communication through our dedicated pastoral support system. We understand that a child's well-being and academic success are deeply interconnected, and therefore, we encourage parents and students to engage with our pastoral support team regularly. This ensures that any concerns or challenges are promptly addressed, creating a sense of reassurance and a collaborative atmosphere.

In addition to our general pastoral support, Ridgeway Secondary School boasts specialised teams dedicated to specific areas of focus. Our SEND (Special Educational Needs and Disabilities), attendance, and safeguarding teams work tirelessly to provide targeted assistance where needed. The SEND team tailors support for students with diverse needs, ensuring they have access to the resources and accommodations necessary for their success. The attendance team monitors and addresses attendance concerns promptly, recognising its impact on overall academic progress. Our safeguarding team is committed to creating a safe and secure environment for all students, proactively addressing any issues that may arise.

By integrating these dedicated teams and maintaining an open line of communication, we create a holistic support system where parents, students, and the school collaborate seamlessly to achieve common goals, ensuring the well-being and success of each student at Ridgeway Secondary School.

SEND	Safeguarding	Attendance
Mr J Worton	Mr J Worton	Mr J Worton
Mrs S Trevethick	Mrs L Dare	Mrs C Gibbs
Mrs M McNamee	Mrs M McNamee	Mrs T Dodd

GETTING TO KNOW YOU AND YOUR CHILD

Before starting secondary school at Ridgeway Secondary School, we place a significant emphasis on building a strong partnership between parents, students, and the school community. We recognise the pivotal role parents play in their child's academic journey, and to foster open communication and collaboration, we invite all parents to meet their child's form tutor, Head of Key Stage and the Senior Leadership Team.

This initial meeting provides a valuable opportunity for parents to discuss any successes, address initial queries, and establish a positive and supportive relationship with the form tutor. By engaging in constructive conversations early on, we aim to create an environment where parents feel informed, involved, and confident in their child's transition to secondary school.

Furthermore, to ensure parents remain well-informed about their child's academic progress, we host a dedicated learning-focused evening during the summer term. This evening is designed to provide parents with insights into their child's achievements, areas of growth, and future academic goals. The event serves as a platform for meaningful discussions about the student's learning journey, allowing parents to actively participate in their child's educational experience.

By inviting parents to these tailored sessions, we reinforce the importance of a collaborative partnership between home and school. This proactive approach not only enhances communication but also contributes to a positive and supportive learning environment for every student at Ridgeway Secondary School.

ATTENDANCE

Ridgeway Secondary School takes immense pride in maintaining the best attendance figures locally ranking in the top 10% nationally among secondary schools. Our commitment to fostering a culture of regular attendance stems from a holistic understanding of its profound impact on academic achievement and overall student well-being.

Central to our success is the constant interaction with students, emphasising the positive impacts of regular school attendance. We believe in instilling a sense of responsibility and ownership in students, helping them recognise the direct correlation between attendance and academic success. Through regular communication and engaging programs, we highlight the importance of being present in the learning environment to maximise educational opportunities.

Recognising that each family may face unique circumstances, Ridgeway Secondary School is dedicated to providing additional support to those in need. We understand that various factors can contribute to attendance challenges, and our approach is to work collaboratively with families to address these issues. Our support extends beyond mere encouragement, involving targeted interventions and assistance tailored to individual circumstances.

By establishing a supportive framework, including timely communication, personalised support, and an awareness of the challenges families may encounter, we create an environment where students are motivated to attend school regularly.



This commitment not only contributes to our exceptional attendance figures but also ensures that every student has the opportunity to fully benefit from their educational experience at Ridgeway Secondary School.

There is a proven link to attendance and exam success. If a student misses 17 days per year they are likely to drop one grade on every GCSE subject that they take.

- Attendance of 95% or more = 74% of students are likely to get 5 or more level 4 to 9 GCSEs.
- Attendance of 92.5 to 93.5% = 60% of students are likely to get 5 or more level 4 to 9 GCSEs.
- Attendance of 88% or lower = only 27% of students are likely to get 5 or more level 4 to 9 GCSEs.

For more detailed information regarding attendance, please refer to the School's Attendance Policy.

RIDGEWAY SECONDARY SCHOOL ATTENDANCE

	'21-'22	'22-'23	'23-'24	'24-'25	National Average
Whole School Attendance	90.36	92.28	93.5	94.7	91.7
Persistent Absence	39.4	22.73	13.9	11	24.7

At Ridgeway Secondary School we have the highest expectations for attendance. The Education Act 1996 requires regular attendance for all students on our roll. This is essential if they are to succeed and fulfil their potential.

It is the legal responsibility of parents/carers to ensure their children attend the school where they are on roll.

96% TARGET

WHAT IS YOUR ABSENCE COSTING YOU?

1 DAY A WEEK
ABSENCE EQUALS ALMOST **2.5 YEARS** OF LOST EDUCATION DURING YOUR ENTIRE SCHOOL CAREER.

10 DAYS HOLIDAY
EACH YEAR EQUALS **2 WHOLE TERMS** LOST OVER YOUR SCHOOL CAREER.

15 MINUTES LATE EVERYDAY
EQUALS ALMOST **100 DAYS** OF EDUCATION LOST OVER YOUR SCHOOL CAREER.

HALF A DAY A WEEK
MISSED DURING YOUR GCSE YEARS COULD MEAN **A WHOLE GRADE** LOST FOR EACH GCSE TAKEN.

FULL ATTENDANCE
LEADS TO THE BEST OUTCOMES
GIVE YOURSELF THE BEST CHANCE, MAKE SURE YOU ARE IN SCHOOL EVERYDAY!

THERE ARE 190 SCHOOL DAYS A YEAR, LEAVING 175 DAYS FOR TRIPS, TREATS, HOLIDAYS, AND NON-URGENT APPOINTMENTS.

RIDGEWAY
SECONDARY SCHOOL

There is a clear link between students' achievement and their level of attendance at school. We want all the students to achieve the very best they can and for this they need to be in school every day. Student Attendance has improved significantly over the past few years and we expect our students to attend school every day unless they are ill.

Please be aware that any absence that takes a student out of school such as medical appointments (doctors, dentist) etc do count as absence even though they may well have been authorised by the school. This will still affect a student's overall attendance %.

The minimum target for all students is 95%, if attendance falls below this then additional support will be offered in order to support attendance. Students who achieve this attendance target will be rewarded through participation in reward trips, ePraise points and recognition in termly celebration assemblies. For those that achieve 100% attendance they will be celebrated with additional rewards.

This table shows how much learning is missed over a year.



Term Time Holidays

Encouraging regular attendance is crucial for your child's academic progress and overall well-being. Taking holidays during term time disrupts the continuity of learning and can have a detrimental impact on your child's educational development. It is essential for parents to recognise the importance of consistent attendance in shaping a child's academic success. Classroom instruction is carefully planned to cover essential content and build foundational skills, and when children miss school, they may struggle to catch up. Furthermore, regular attendance helps children establish routines, fosters a sense of responsibility, and promotes social interaction crucial for their emotional and social development.

By prioritising school attendance and planning holidays outside of term time, parents contribute to the stability and effectiveness of their child's education, ensuring they have the best possible chance to thrive academically and personally.

All schools in the trust will unauthorise holiday requests unless there are exceptional circumstances that warrant further consideration.

EVERY SCHOOL DAY MATTERS

Penalty Notice Fines for School Attendance

The new national Framework for Penalty Notices and fines with effect from September 2024.

Per Parent Per Child

Penalty Notice Fines will now be issued to each parent, for each child that is absent. For example: 2 siblings with unauthorised absence during term time may result in each parent being issued with one penalty notice per child.

10 sessions of

unauthorised absence in a 10-week period

Penalty Notice Fines will be considered when there has been 10 sessions (5 days) of unauthorised absence in a 10-week period.

1

First Offence

The first time a Penalty Notice is issued for Term Time Leave or Irregular Attendance, the amount will be:

£160 per parent, per child, paid within 28 days.

Reduced to £80 per parent, per child, if paid within 21 days.

2

Second Offence

(within 3 years from the date of first penalty notice)

The second time a Penalty Notice is issued for Term Time Leave or Irregular Attendance, the amount will be:

£160 per parent, per child, paid within 28 days.

3

Third Offence

(within 3 years from the date of first penalty notice)

The third time an offence is committed for Term Time Leave or Irregular Attendance, a Penalty Notice will not be issued, and the case will be presented straight to the Magistrates Court. Magistrates' fines can be up to £2500 per parent, per child.

This is a criminal offence and a parent may end up with a criminal record.

SAFEGUARDING

Ridgeway Secondary School stands as a beacon of excellence in safeguarding, earning recognition across Worcestershire as a leading institution in this crucial area. Our unwavering commitment to creating a safe and secure environment for every student has positioned us as a model for best practices in safeguarding.

At the helm of our safeguarding efforts is our dedicated Designated Safeguarding Lead (DSL), Mr. J. Worton, who holds a pivotal role, overseeing safeguarding not only within Ridgeway Secondary School but also across the entire family of schools within our Multi Academy Trust. His leadership ensures a consistent and high standard of safeguarding measures that prioritise the well-being of every student.

Our strong commitment to safeguarding extends beyond the school gates through collaborative partnerships with local safeguarding partners. Ridgeway Secondary School works closely with the police, mental health services, and the local authority to create a comprehensive network of support. This collaborative approach ensures that safeguarding is not just a school responsibility but a shared commitment among various community stakeholders.

Furthermore, our engagement with community organizations enhances our safeguarding efforts. By fostering relationships with local community groups, we create a robust support system that extends beyond the academic setting. This collaborative approach not only strengthens our safeguarding measures but also contributes to the overall well-being of our students.

We take great pride in our achievements in safeguarding, reflecting our dedication to providing a secure and nurturing environment for every student at Ridgeway Secondary School. Through proactive measures, strong leadership, and meaningful partnerships, we strive to uphold the highest standards of safeguarding, making a positive impact on the lives of our students and the broader community.



Mr J Worton
Safeguarding Lead (DSL)



Mrs L Dare
Deputy DSL



Mrs McNamee
Deputy DSL



Mr M Ball
Deputy DSL

THE SCHOOL DAY

8:30	Bell*
8:30 – 8:57	Tutor Time
9:00 – 9:57	Period 1
10:00 – 11:00	Period 2
11:00 – 11:22	Break
11:25 – 12:22	Period 3
12:25 – 13:25	Period 4
13:25 – 14:02	Lunch
14:05 – 15:05	Period 5

*Please note: the timings of the school day change during GCSE season to allow for an early lunch break.

At Ridgeway Secondary School, the school day is thoughtfully structured to enhance students' learning experiences.

The day comprises five one-hour lessons, interspersed with two breaks strategically positioned every two hours. This schedule not only provides students with focused academic engagement but also allows for necessary mental breaks.

Transitioning between classes is a swift and disciplined affair, with a three-minute window allotted for students to move quietly and efficiently.

The school emphasises a structured transition protocol, where students navigate the corridors in silence, adhering to the left side and moving in single file.

This disciplined approach not only maintains a conducive learning environment but also instils a sense of responsibility and respect among the student body.

To ensure clarity and organization, students receive a detailed timetable outlining the specific locations and times for each lesson, fostering a well-managed and productive academic environment at Ridgeway Secondary School.



READING AT RIDGEWAY

At Ridgeway Secondary School, we believe that reading is the foundation of academic success and a gateway to a lifetime of learning. That's why reading is embedded into daily life at Ridgeway, ensuring that every student has the opportunity to develop their skills, broaden their knowledge, and foster a love of literature.

Reading Every Day

Every child at Ridgeway reads every day. During tutor time, students engage with carefully selected texts as a class, exposing them to a diverse range of literature, ideas, and vocabulary. These texts are thoughtfully chosen to challenge and inspire students while fostering discussion and comprehension skills.

Reading in English and Across the Curriculum

Our reading programme extends into English lessons, where students continue their journey with explicit reading lessons designed to build confidence, comprehension, and a passion for literature. In these lessons, students explore a variety of texts that encourage deeper thinking, discussion, and analytical skills. Beyond English, reading is a crucial part of every subject, reinforcing literacy as a fundamental tool for success in all areas of learning.

Tracking Progress and Engagement

We take reading progress seriously. Using **Accelerated Reader**, we closely track student engagement, comprehension, and progression to ensure that every child is reading at a level that challenges and supports their development. Reading age tests are conducted three times per year, and results are shared with parents so they can stay informed about their child's progress.

Support for Students Below Their Chronological Reading Age

We are committed to ensuring that every student reaches their full potential in reading. Students who are not yet reading at their chronological age receive tailored support, including:

- One-to-one interventions with trained staff to provide focused, personalised support.
- Peer reading schemes, where older students mentor and support younger readers.
- Small-group interventions, designed to build confidence and fluency in a supportive setting.

A Culture of Reading in Every Lesson

At Ridgeway, reading is not just for English lessons—it is an integral part of every subject. We have a '**no opt-out**' culture of reading aloud in most lessons, ensuring that all students develop confidence in reading and speaking fluently. This approach builds literacy skills across the curriculum while fostering a school-wide culture of reading excellence.

Building a Love for Reading

Reading at Ridgeway is not just about progress— it's about passion. We want every student to develop a lifelong love of reading, which is why we expose them to engaging, high-quality literature and encourage them to explore books beyond the classroom. Whether through our well-stocked library, reading challenges, or book clubs, we create opportunities for students to discover the joy of reading.

At Ridgeway, reading is at the heart of learning. By embedding reading into our daily routines, tracking progress closely, and providing targeted support where needed, we ensure that every student develops the literacy skills necessary to thrive in school and beyond.

TUTOR TIME

	Monday	Tuesday	Wednesday	Thursday	Friday
Y7	Assembly	Guided Reading (Teacher Led)	Guided Reading (Popcorn Reading)	Peer Support Reading (LRC) Guided Reading Directed Reading	Guided Reading (Teacher Led)
Y8	Guided Reading (Teacher Led)	Assembly	Guided Reading (Popcorn Reading)	Guided Reading (Directed Reading)	Guided Reading (Teacher Led)
Y9	Guided Reading (Teacher Led)	Assembly	Guided Reading (Popcorn Reading)	Guided Reading (Directed Reading)	Guided Reading (Teacher Led)
Y10	Guided Reading (Teacher Led)	Guided Reading (Popcorn Reading)	Assembly	Peer Support Reading (LRC) Literacy Skills (Room 6)	Guided Reading (Teacher Led)
Y11	Core Intervention	Core Intervention	Assembly	Core Intervention	Core Intervention

A significant component of tutor time is dedicated to improving literacy skills and promoting a genuine passion for reading. Tutors engage students in discussions about diverse literary works, encouraging them to explore different genres and authors. This intentional focus on literacy not only contributes to academic success but also nurtures critical thinking and broadens students' perspectives.

Once a week, students participate in year group assemblies that delve into worldly topics, enriching the Ridgeway 360 curriculum. These assemblies provide a platform for discussing current events, global issues, and relevant societal topics, fostering a well-rounded education that extends beyond the confines of the classroom.

Tutors at Ridgeway Secondary School take a proactive approach to student welfare by tracking engagement, attendance, and overall well-being across the curriculum. This data-driven approach allows tutors to identify areas of concern promptly and provide necessary support, ensuring that each student receives the personalized attention needed to thrive academically and personally.

In summary, Ridgeway Secondary School's tutor time curriculum exemplifies a holistic commitment to student development by emphasizing positive pastoral relationships, literacy improvement, and a global perspective, all while vigilantly monitoring and supporting students' well-being throughout their academic journey.

OUR CURRICULUM

KEY STAGE 3

At KS3 our aim is to provide a rich and varied curriculum that develops the whole student by building a depth of knowledge and skills in each subject area. The curriculum at Key Stage 3 is a means to an end in itself – it does not function as a ‘watered down’ version of, nor is it primarily a preparation for, GCSE. As such our curriculum remains as broad as possible for as long as possible.

KS3 is three years and there is no attempt to put children on pathways during this time. We put emphasis on a curriculum that teaches rich and powerful knowledge and language from the start of Year 7. Students in Key Stage 3 are given access to an exciting curriculum (including Computer Science, Technology subjects, Music and PSHE) covering the requirements of the National Curriculum (and occasionally going further) by the end of Year 9.

Students with additional needs are carefully encouraged via multiple layers of support both academically and socio-emotionally and we provide personalised provision for some students to support them in achieving their full potential. This is always in the best interest of the child and often is informed by external support. Therefore, children with additional needs flourish at Ridgeway and achieve highly. In Year 9, our students are supported to engage in selecting their subject areas for further study at GCSE. This process is carefully managed by providing tailored guidance through taster lessons and conversations with targeted individuals (mostly, but not exclusively SEN and Pupil Premium) to ensure that we are not disadvantaging any students through this approach.

See below links for our KS3 Learning Journey

[Year 7 Learning Journey](#)

[Year 8 Learning Journey](#)

[Year 9 Learning Journey](#)

KEY STAGE 4

Our two-year KS4 provides breadth and depth across a variety of subjects enabling our ambitious curriculum experience to continue from KS3 into KS4.

In Key Stage 4 all students study the core curriculum of English Language and English Literature, Mathematics and Science at GCSE and non-examined PSHE, RE and PE. Students are required to follow up to four additional courses leading to GCSE examinations. Students in top set study Separate Science as part of the core curriculum. Additional core Science hours in the Key Stage 4 curriculum support the increased content for Separate Science and the opportunities for purposeful practicals which are at the heart of effective Science delivery. Students are also provided with a wide and ambitious range of further options. These open up extensive options post-16 and post-18, including access to prestigious courses and progression into a range of career options.

Some students choose, or are guided to take, additional lessons to support their English and Maths and Science. Students are taught in sets according to ability in Mathematics and with a mix of setting and mixed ability in English and Science at Key Stage 4. Students are taught in mixed ability groups in all other subjects. Nearly all of our students choose at least one Ebacc subject, with over 90% of students taking either Geography or History.

Currently, just over a quarter of students follow the full Ebacc suite (against a national percentage of 40%). This provides us with a helpful benchmark to aid our current aspirations in this area of our curriculum delivery. The implementation of a new languages curriculum which has led to greater student engagement in KS3 will help us to achieve our ambition to increase the percentage of students taking a Language at KS4 to well above the national percentage. Alongside this however we recognise the importance of the broader, non-Ebacc curriculum, in giving students a rich and engaging experience. In creative and practical subjects, such as Technology, Art, Food and PE our numbers are above the national average. We want our students to retain the opportunity to engage with the whole spectrum of the curriculum taught in subject disciplines across KS4.

Options Booklet 2024

More information about each individual subject area can be found here :

[Curriculum Subjects | Ridgeway Secondary](#)

PERSONAL DEVELOPMENT AND EXTRA CURRICULAR

At Ridgeway Secondary School, we offer a wide range of activities outside of the classroom for students with varied interests. These can range from musical clubs, chess, art, reading and STEM clubs and numerous other sporting activities. Where possible, students will be given the opportunity to attend trips which support learning in the classroom to expand key knowledge and ideas.

Students should discuss attending clubs with their subject teacher first to ensure that they are aware of the day, when the club is starting, venue and club start and end time and then discuss attending with parents, in advance. Clear arrangements must be made regarding getting home safely/suitable collection point.

A timetable will be sent to parents every half term.

At Ridgeway we understand that learning about who we are and developing as a person does not just happen in the classroom. There are those priceless experiences that we all remember from our time at school. The residential trips, visits and sports fixtures that build character and forge memories that stay with us until today.

As students' progress through the school, they have opportunities to take advantage of trips and experiences outside of the classroom. Ski trips, residential for outdoor activities, foreign exchange visits, sports tours, museum visits and theatre performances all feature in the programme. The school also offers the Duke of Edinburgh Award to its students from Year 9 onwards with students achieving both bronze and silver levels of the award.



THE RIDGEWAY PROMISE



The Ridgeway Promise is a promise to our parents and students to provide a comprehensive offer of trips and experiences to ensure your child gets the best possible out of classroom experiences throughout their time at secondary school. While there will be things added to this as we take advantage of opportunities that arise, we want to ensure there is a minimum offer for our students that they can all look to access.

CAREERS

Careers Education, Information, Advice, and Guidance (CEIAG) programs for students in Years 7–11 are designed to help them understand the world of work, develop essential skills, and make informed decisions about their future. Here's a general overview of what such programs typically include:

Year 7

- **Career Exploration:** Assemblies and workshops to explore different careers.
- **Visits to Workplaces:** Opportunities to see various work environments.
- **Online Career Tools:** Introduction to Unifrog for career research

Year 8

- **Employer Engagement:** Interactions with professionals during career fairs.
- **Skills Workshops:** Continued development of skills through targeted workshops.
- **Career Exploration Tools:** Using online tools to explore interests and aspirations

Year 9

- **Options Guidance:** Support in choosing GCSE subjects that align with career interests.
- **Workplace Visits:** More in-depth visits to various industries.
- **Career Fairs:** Continued participation in career fairs and employer interactions.
- **Skills Development:** Workshops and activities to build on existing skill
- **Career Exploration Tools:** Using online tools to explore interests and aspirations, including Unifrog

Year 10

- **Work Experience:** Placements to gain real-world experience.
- **Career Workshops:** Sessions focused on specific career paths and skills.
- **Further Education Guidance:** Information on post-16 options, including apprenticeships and college courses

Year 11

- **Post-16 Planning:** Detailed guidance on next steps after GCSEs.
- **Application Support:** Help with applications for college, apprenticeships, or other training programs.
- **Mock Interviews:** Practice interviews with employers to build confidence
- **Career Coaching:** One-on-one sessions to refine career plans and goals.
- **Employer Engagement:** Continued interactions with employers to understand different career paths

Our Careers advisor also attends parents' evenings to offer support and guidance.

These programs are often aligned with the Gatsby Benchmarks, which are a framework of good career guidance practices. Schools aim to provide a comprehensive and impartial CEIAG program to ensure students are well-prepared for their future careers.



RIDGEWAY
SECONDARY SCHOOL

Ridgeway Secondary School - Careers Journey

At Ridgeway Secondary School, we endeavor to provide the very best impartial careers education, information, advice and guidance (CEIAG) for our pupils.

Contact: Mrs R Dixon rdixon@ridgewaysecondaryschool.org.uk



COMMUNITY LINKS AND OPPORTUNITIES

At Ridgeway Secondary School, we are proud to be an integral part of our vibrant and dynamic local community. We strongly believe in providing our students with every opportunity to grow, thrive, and succeed in both their academic and personal development. Our deep engagement with local sports clubs, businesses, and industry professionals plays a vital role in enhancing the education and experiences we offer. Through our strong community links, we ensure our students benefit from valuable work and industry experiences, sporting excellence, and meaningful connections with local businesses.

Our Commitment to Local Community Engagement

We work closely with several key local organizations to create opportunities that benefit both our students and the wider community. These partnerships help us deliver real-world learning experiences and enrich our students' educational journey.

Work and Industry Experience

Ridgeway Secondary School fosters strong relationships with local businesses and industries, offering our students opportunities to engage with and gain insight into the world of work. These partnerships allow students to participate in work placements, internships, and careers days, where they can explore different sectors, develop important skills, and build professional networks.

By collaborating with local businesses, we equip our students with the knowledge and experience they need to pursue successful careers after graduation. Our close ties with these businesses ensure that our students are prepared for the workforce with practical experience that will serve them well in any future career path.

Sporting Excellence

Sport plays a crucial role in the life of Ridgeway Secondary School, and we are proud to partner with some of the best local sports clubs and organizations. These partnerships allow our students to engage in a wide range of sporting activities, from team sports to individual disciplines, at the highest level. Whether they are pursuing professional careers in sport or simply enjoying the benefits of physical activity, our students have access to top-notch coaching, training, and competitive opportunities.

Birmingham Rockets Basketball

The Birmingham Rockets are a premier basketball team in the region. Through our partnership, students at Ridgeway Secondary School have access to expert coaching and the chance to compete at local, regional, and national levels. Our students can participate in basketball clinics, training sessions, and even match-day experiences, gaining invaluable insight into the sport's competitive nature.

England Badminton

Ridgeway Secondary School works closely with England Badminton to provide students with opportunities to compete and train at elite levels. Students have access to coaching clinics, tournaments, and training camps with top-level coaches, helping them develop their badminton skills and potentially progress to local and regional competition.

Gloucester Rugby

We have a longstanding partnership with Gloucester Rugby, one of the region's leading rugby clubs. Our students can attend coaching sessions, participate in talent development programs, and even gain experience at professional matches. This link provides invaluable pathways for students wishing to pursue rugby at the highest level, as well as giving them the opportunity to improve their fitness, teamwork, and discipline.

Alcester Rugby

In addition to Gloucester Rugby, we work closely with Alcester Rugby, a local club with a strong community ethos. This partnership allows our students to engage in rugby training and participate in competitive matches. Students benefit from local coaching expertise and develop skills that can take them to higher levels in the sport.

Astwood Bank Cricket Club

Cricket is an important part of the sports culture in our community, and we are proud to partner with Astwood Bank Cricket Club. Students at Ridgeway Secondary School have the opportunity to participate in coaching sessions, matches, and skill development programs. This partnership nurtures local cricket talent and offers pathways to more competitive opportunities.

AU Sports

AU Sports is an exciting initiative providing a wide range of sports opportunities to young athletes. Through our collaboration with AU Sports, Ridgeway Secondary School students have access to high-quality coaching, sports events, and tournaments. AU Sports fosters a love for both competitive and recreational sports, ensuring that all students find an avenue to pursue their sporting interests.

Local Business Links

We understand the importance of preparing students for life beyond school, and our strong network of local businesses plays a key role in this process. Through work experience placements, industry talks, and school-to-work transition programs, our students gain a firsthand understanding of the business world. These partnerships provide our students with essential skills such as teamwork, leadership, communication, and problem-solving, making them more attractive candidates for future employers. By engaging with local businesses, we help our students build connections, gain real-world insights, and develop their professional networks, all while strengthening the local economy and community.

Enriching the Community

Ridgeway Secondary School is committed to making a positive impact on the local community. By collaborating with local sports clubs, businesses, and organizations, we create a cycle of opportunity that benefits both our students and the wider community. These partnerships provide invaluable resources, inspire personal growth, and ensure that our students are well-equipped to become active and successful members of society.

We believe that a strong connection with the local community is key to the success of our students, and we are dedicated to fostering these links to offer the very best opportunities for our young people.

Together, we are building a brighter future for Ridgeway Secondary School and the local community.

ELITE PERFORMANCE

At Ridgeway Secondary School, we are dedicated to nurturing the talents of our students, both academically and in their extracurricular pursuits. We recognize that some students excel in areas such as sports, acting, and singing, and we are committed to supporting these elite performers to thrive in their disciplines while maintaining academic excellence.

Individual Mentorship: Tailored Support for Success

Each elite performer is paired with a dedicated mentor within the school. This mentor assists in balancing the demands of their extracurricular activities with academic responsibilities, offering guidance on time management, stress management, and maintaining a healthy school-life balance.

Public Recognition of Achievement

We celebrate the accomplishments of our elite performers by awarding them a special badge that acknowledges their outstanding contributions. In Physical Education lessons, these students wear a distinctive PE kit symbolizing their status and achievements, fostering pride and motivation.

Academic Support: Balancing Passion with Studies

Understanding the time commitment required for excellence in extracurricular activities, we offer flexible approaches to deadlines and coursework. Through clear communication with teachers and tailored study support, we ensure that elite performers can manage both their academic and extracurricular commitments effectively.

Access to Funding and Opportunities

We actively guide students toward available funding streams and scholarships to support their development, ensuring that financial barriers do not hinder their pursuit of excellence.

At Ridgeway Secondary School, we take pride in providing an environment where elite performers can flourish, both in their chosen disciplines and academically. Our comprehensive support system is designed to help students achieve their full potential, embodying our commitment to nurturing excellence in all its forms.

PASTORAL SUPPORT

At Ridgeway Secondary School, pastoral care is the provision our school makes to ensure the physical and emotional welfare of pupils. We believe it is the essential foundation upon which learning can take place and it forms an essential part of our culture of Ready Respectful and Safe. We pride ourselves on our relationships with young people, links with home and the overall experience that each child has at this school.

All staff have a pastoral and safeguarding responsibility and understand that high standards of pastoral care go far further than a basic commitment to welfare, with pastoral care extending to every aspect of school life in order to foster pupils' personal development as much as their academic progress.

We believe that good pastoral care in school is also fundamental to the development of character and social skills, which will be of critical importance to pupils in later life. At Ridgeway, we have a holistic approach to pastoral care: a whole school vision that aims to improve learners' attendance, and to foster an atmosphere that is conducive for learning and promotes tolerance, resilience, fairness and equal opportunities for all, with due regard for protected characteristics. Such an approach to pastoral care should eliminate racism, inequality, discrimination and other hindrances to learning, to create an ethos that culminates in engagement and academic achievement of learners.

Below you will find information regarding our pastoral system. For more information regarding your child, in a pastoral sense, please contact their form tutor.



Mrs T Dodd
Head of Key Stage 3



Mrs M Smith
Pastoral Manager



Ms C Gibbs
Attendance Officer

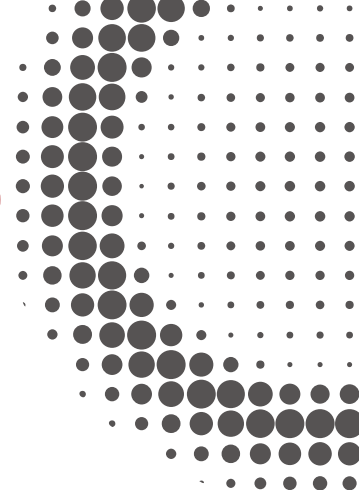
At Ridgeway, each student belongs to a House. Each house includes a tutor team, a Head of Key Stage and is supported by the schools Pastoral Manager.

Our Pastoral team help ensure that students are able to learn and make progress in lessons and develop the necessary skills to overcome friendship issues and other problems. They support the form tutors and liaise closely with parents and support agencies where necessary. These teams are supported by the safeguarding team if issues of this nature arise.

To discuss pastoral concerns with a member of the pastoral team, please contact (via the school office) – Mrs Dodd for KS3 concerns and Mrs Sandell for those related to KS4.



HELPING YOUR CHILD SUCCEED



Academic

1. Visiting our [curriculum page](#) which will help you find out what topics are coming up in each subject. The school library has books to support with additional reading.
2. Testing your child and quizzing them using the knowledge organisers is hugely beneficial. It will help your child remember more knowledge in the long term.
3. Completing any homework set to a high standard. Help your child by building time into their day to complete the work. Support by providing help and guidance as required.
4. Informing the school if your child expresses a difficulty in school. If they are struggling in a class, we want to know about it.
5. Supporting pupils during assessment weeks. Assessments are nothing to worry about. Parents should encourage pupils to revise, stay calm and simply do their best. That is all the school expects.
6. Encouraging pupils to practice. Pupils should practice their reading, mathematical skill, handwriting, ability to remember powerful knowledge and to write extensively. Parents could set spelling tests, mathematical quizzes, quick subject quizzes and provide rewards accordingly.
7. Attending any meeting called by the school to support your child's progress. These include any Accelerated Learning meetings, showcases and all parents' evenings. The school will write to you if additional meetings arise.

Numeracy

1. Making sure your child masters the basics. Knowing the basics is fundamental to mathematical success. Pupils should log on to [TT Rock Stars](#) each evening and practise their proficiency in multiplication tables.
2. Encouraging your child to complete more practise in the most crucial skills of addition and subtraction if they are not yet confident. We would encourage them to use [NumBots](#). Their login details are the same as for TT Rock Stars.
3. Helping your child to practise previously covered topics. Your children have booklets from previous units and can re-do the exercises in these to practise until fluent in the main skills.
4. Being positive! If your child is not yet confident with their mathematics, don't worry – all children are making good progress and will succeed.
5. Asking your child what they have been covering recently and seeing if they can teach it to you. This will consolidate their knowledge and skills as well as giving you a chance to ask them questions!

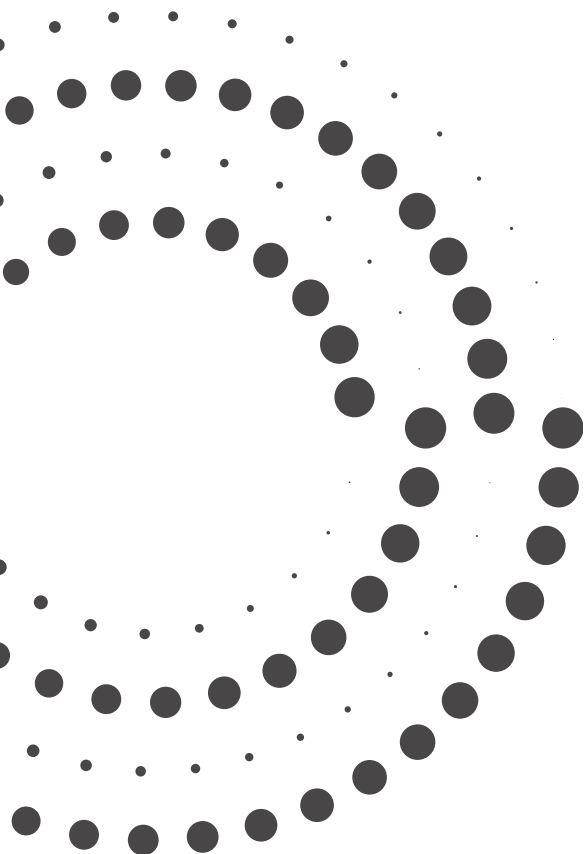
Reading

1. Insisting that your child reads for 30 minutes every evening. This amount is as the bare minimum expected, parents and carers must ensure this happens every single day. Good routines are essential.
2. Supporting them to comprehend their reading by asking them questions about the book in question. Support your child by being really positive about reading – it's a fantastic use of time! It can also be really beneficial to read newspapers and create family reading time. Reading credible news online may also be suitable.
3. Considering credible magazine subscriptions. Some non-fiction magazines are really informative and subscriptions ensure that your child will continually read.
4. Encouraging your child to select books through us. We can then check if they are appropriate. When reading independently, a text needs to have the right amount of challenge to ensure readers can be challenged but also supported.
5. Supporting your child to find a book that excites and intrigues them. The school wants pupils to read for pleasure and leisure. The school library is available to all pupils and we are happy to advise.
6. Encouraging your child to tackle the school's reading list (see below). We would expect all pupils to tackle the majority of these wonderful books during their time at Ridgeway Secondary School.
7. Asking yourself the question – is my child reading everyday?

Useful Websites

100 fiction books all young people should read before leaving secondary school

Magazines and newspapers for young people



Organisation

1. Arranging a bedroom or shelf with labels so that your child can organise books effectively if they take any home with them.

2. Providing a secure space to keep all school resources. All booklets will be sent home at the end of each unit and these must be kept safely. Under no circumstances are books to be thrown away.

3. Helping your child organise themselves before they leave home. Do they have the following things:

- Locker combination
- Full school uniform
- PE kit, if applicable
- Any books they have taken home which they need for a lesson that day
- Water bottle and any additional fruit
- School bag
- Warm clothing during the winter

Extra-Curricular

1. Limiting and controlling your child's use of social media. Social media can have a very negative impact on a child's self-esteem, confidence and communication skills. We actively encourage parents/carers to take robust action to ensure pupils do not become obsessed or reliant on social media.

2. Taking your child's mobile phone at bedtime and limiting time on games consoles. This will help your child manage a good night's rest before the next school day. No screen time one hour before bed is a minimum expectation.

3. Helping your child find a hobby that allows them to express themselves positively outside of school. If your child is an enthusiastic singer, they could join a choir. If they are a budding sportsperson, they should join a competitive team.



UNIFORM AND EQUIPMENT

At Ridgeway Secondary School, we believe that **high standards in uniform reflect high standards in all areas** of school life. Our students are ambassadors for the school, and wearing the correct uniform with pride plays a vital role in promoting a sense of belonging, discipline, and unity.

We expect all students to wear the full, correct uniform **at all times**, including to and from school. Our uniform policy is **non-negotiable**, and we ask all families to support us in maintaining these high standards.

If families are experiencing any difficulties with obtaining the correct uniform, we urge you to contact the school at the *earliest opportunity* so that we can offer appropriate support and guidance. We are here to help – but communication is key.

Please note:

- **No piercings** (other than a single pair of small stud earrings) are permitted.
- **No extreme hairstyles, non-uniform items, or accessories** will be accepted.
- Any student wearing incorrect uniform or items outside of policy will be followed up by their **form tutor**, and the **school behaviour policy will apply**.

We thank all students and families for their ongoing support in upholding our exceptionally high standards, ensuring Ridgeway remains a smart, respectful, and aspirational community for all.



PE KIT

Girls & Boys

- Black PE T-Shirt with school logo
- PE shorts with school logo
- PE skirt with school logo
- Black tracksuit bottoms or leggings with school logo
- Black zip up top with school logo
- Black or white socks
- Trainers and Football Boots
- Shin pads
- Gumshield
- Waterproof jacket
- A bag for dirty trainers
- Hoodies are not allowed
- Jewellery is not permitted
- Long hair must be tied up
- Pupils have 5 minutes only to get changed in and out of their PE kit
- Please ensure that all kit is named



EQUIPMENT

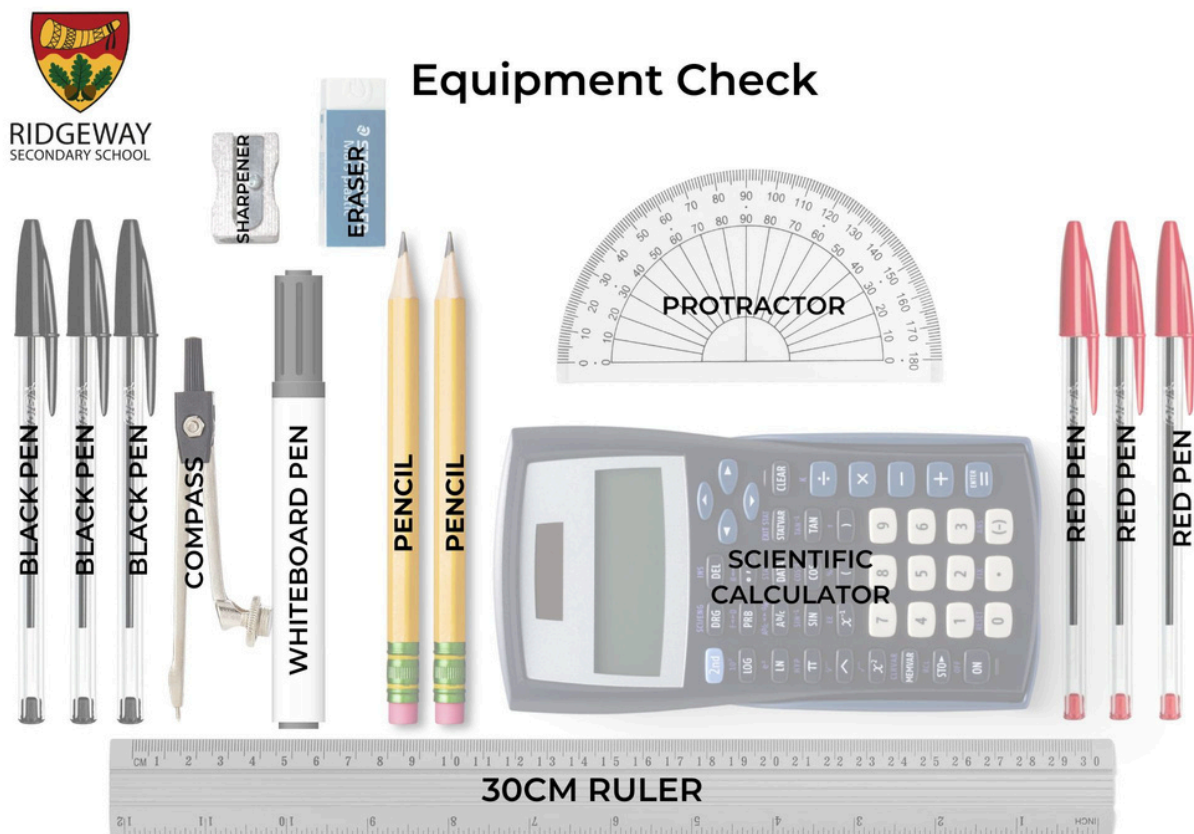
All of our students at Ridgeway are expected to have all of the following equipment in every lesson. It is an important part to ensure the smooth start to lessons and to maximise learning time.

Students must have a robust, plain and clear pencil case.

Further specialist equipment may be provided for some lessons. However, all students are expected to bring:

- Black pen x3 (biro only, no clicker or roller ball pens)
- Red pen x3
- Pencil x3
- A sharpener
- An eraser
- Whiteboard pen x1
- A 30cm long ruler
- A geometry set (protractor, compasses)
- A scientific calculator

Please note: a reading book must also be brought to school every day.
The school library (LRC) should be used where necessary to obtain a book.



EQUIPMENT



Ridgeway Equipment Shop!

Black pen/red pen - 10p each	Protractor - 16p
Pencil - 20p	Compass - 47p
Sharpener/rubber - 10p each	Highlighter - 30p
30cm ruler - 35p	Pencil case - £1.30
2B pencil - 21p	Full pencil case - £4.50
4B pencil - 25p	Calculator - £15

AVAILABLE EVERY BREAK TIME!

TRANSPORT

We understand that starting secondary school is an exciting time, and part of preparing for the journey ahead is planning how your child will travel to Ridgeway Secondary School safely and confidently. Below is everything you need to know about travelling from Redditch and surrounding villages.

By Bus

Several bus routes provide transport to and from Ridgeway Secondary School from Redditch and nearby areas:

- Diamond Bus Services operate key routes that pass near Ridgeway. The most common routes include:
- Route S77 – which goes from the bus station in Redditch Town Centre and comes straight to the school site, link for timetable [S77 – Redditch – Ridgeway Middle School – Diamond Bus – Bus Times](#)
- Route RE70 – There is a bus that serves Feckenham and Inkberrow that is run by County Council, details for that service can be found here [RE70 for Ridgeway Academy | Worcestershire County Council](#), contact details are: 079045622680

We recommend checking the Diamond Bus website or using a transport app for up-to-date timetables and routes, as these may change slightly from year to year.

It's always a good idea to plan your route in advance, arrive at the bus stop early, and make sure your child knows what to do if they miss the bus or feel unsure.

Cycling to School

Cycling is a great way to stay active and reduce environmental impact. However, safety is key — particularly when cycling along the Evesham Road (A441), which can be busy during peak times. Please ensure:

- Your child wears a helmet at all times while cycling.
- Their bike has working lights and reflectors if travelling in poor visibility.
- They are confident using hand signals and understand basic road safety rules.
- They dismount before entering the school site — for safety reasons, cycling is not permitted on school grounds.
- They use the designated bike shelter to secure their bike during the school day.
- A strong lock is essential to keep their bike safe. The shelter is covered and monitored, but bikes should always be locked securely.

Walking to School

For students living within walking distance, walking can be a safe and healthy option. Key reminders include:

- Always use pavements and designated crossing points, especially along the Evesham Road.
- Walk in groups where possible for added safety.
- Be visible: bright clothing or reflective accessories are helpful during winter months.
- Stay alert and avoid distractions like phones or headphones when near traffic.

If you have any questions about travel arrangements or need help planning a safe route, please contact the school office. We're happy to assist you in ensuring your child has a smooth, safe start at Ridgeway.

RIDGEWAY SECONDARY SCHOOL HOME SCHOOL AGREEMENT

Policy author: JW

Policy approved by: Governing Body

Next policy review date: Winter 25

Version 2.0

The Home School Agreement makes clear the commitment of students and parents/carers. As a parent/carer, we will fully support Ridgeway Secondary School because we believe in the school's vision and values to create the best possible education for our son/daughter. Our commitment will remain throughout our son/daughter's time at Ridgeway Secondary School.

Student name Year group

Parents will endeavour to:

Believe our son/daughter can achieve their best to access university or a high-quality alternative.

Support the school's efforts by encouraging the best possible standards in our son/daughter's studies

Respect, embrace and reinforce the vision and the ethos of the school.

Insist that our son/daughter works hard and produces his/her best work at all times.

Provide a suitable home learning environment and structured routine to complete schoolwork, which is free from distractions such as technology and especially mobile phones which have a detrimental impact on concentration.

Promote the positive impact of homework and provide a suitable place for homework to be done. We will give support and check that the homework is complete and to a good standard.

Make sure that if homework is not completed our son/daughter will attend an afterschool homework detention the following night.

Make sure that if our son/daughter regularly fails to complete homework he/she will attend homework club to support.

Make sure that our son/daughter reads regularly as we understand that a good standard of literacy will have a significant impact on our son/daughter's success, and we want him/her to succeed.

Attendance

Make certain that our son/daughter attends school every day, except in cases of illness or another legitimate reason.

We will schedule routine dentist and doctor appointments during a time when the school is not in session.

If our son/daughter is absent, we will phone the Attendance Officer by 8:4am to report the absence and repeat it for any subsequent days' absence.

Make sure our son/daughter arrives at school on time.

Will not plan for family holidays or other absences during term time as we understand that our son/daughter will be more likely to achieve his/her academic potential by being in school.

We accept that any unauthorised absence of this nature will be investigated by the Education Investigation Service, which will result in the issuing of a fixed penalty.

Uniform

Insist that our son/daughter wears the correct uniform every day.

Respect that uniform violations will result in our son/daughter being placed in detention if the situation cannot be resolved by bringing the appropriate uniform in or borrowing the items provided by school.

Communication with school

Always make ourselves available to the school by providing an up-to-date mobile phone number and email address.

Make sure any concerns or issues are not discussed on social media sites as this could be potentially damaging for students.

We will actively discourage the use of social media to criticise and make unsubstantiated comments and educate our son/daughter about the right way to communicate. Read all reports carefully.

Attend all parent meetings including progress, behaviour and attendance meetings.

Always treat Ridgeway Secondary School teachers with respect and courtesy.

Discipline

Support the school's behaviour for learning protocols.

Not excuse our son/daughter from detention as it takes priority over any other activity.

Make sure that if our son/daughter commits a serious breach of the behaviour policy, he/she will be placed in isolation whilst a full investigation takes place and may include a further isolation period or fixed term suspension or permanent exclusion.

Students will endeavour to:

Make the most of all the opportunities offered and follow the motto 'being here means being better'.

Work hard and learn well in the whole range of school activities.

Behave appropriately and use good manners; showing I am respectful.

Follow rules and understand/accept consequences if I do not.

Be punctual to school and all lessons.

Wear the correct uniform with pride and bring all the necessary basic equipment.

Protect and care for all school equipment, books and furniture and the fabric of the building.

Complete all homework set to a good standard and meet deadlines for submission.

Act on teachers' feedback in all my work carefully.

Complete schoolwork at home free from distraction by turning off my mobile or any other technology, which is a distraction.

Have respect for individuals, groups, and communities both within the school and beyond regardless of age, culture, religion or gender.

Observe the school rules and adhere to all policies.

Think about and plan for my next steps in education, employment and training.

Report to a member of staff if I do not feel safe in or outside of school.

Report to a member of staff if I think that someone else may be in danger or being abused in any way.

I agree to abide by the Home School Agreement. Not signing the agreement does not invalidate it.

Student name: Signed (Student).....

Signed Parent/Carer:.....

Date

CATERING

The emphasis is on providing balanced and flavourful meals that appeal to a wide range of tastes. Our catering team takes pride in crafting dishes that not only meet nutritional standards but also cater to the diverse preferences of our student body. This commitment to inclusivity ensures that every student can enjoy a satisfying and nourishing meal, contributing to their overall well-being, and creating a positive dining experience within our secondary school community.

Please see a snapshot of our menus for break and lunchtimes in the following four pages.

MID MORNING BREAK TARIFF

Toast	30p	Pizzini	£2.30
Hash Brown	50p	Pizza Slice.....	£1.20
Cheese on Toast	90p	Bacon, Cheese Bagel with	
½ Cheese Toastie	90p	BBQ Sauce	£2.30
Crumpet.....	70p		
Large Waffle	£1.20	Pain au Chocolat	£1.20
Croissant	£1.20	Yoghurt	70p
Steak Slice	£1.80	Fresh Fruit	60p
Cheese & Onion Slice	£1.60	Fruit Bags	90p
Sausage & Bean Slice	£1.80	Muffin	£1.20
Bacon/Sausage Bap.....	£1.10	Kitchen Made Flapjack	90p
Breakfast Wrap	£2.30		
Cheese & Bean Wrap	£1.80		
Sausage Roll.....	£1.30		
Large Breakfast Bap	£1.20		
Nachos, Cheese &			
BBQ Sauce.....	£1.00		

A selection of the above available daily
www.shireservices.co.uk



[WS17]

DELI COUNTER COLD STOP TARIFF

Sandwich or Small Baguette, Traybake, 500ml Water.....	£3.00
Large Baguettes	£2.30
Sandwiches.....	£1.80
Filled Wraps	£2.30
Sub Rolls.....	£2.30
Pasta Pots.....	£2.30
Salad Pots.....	£2.20
Plated Protein Salad	£2.30
Fruit Bags.....	90p
Fresh Fruit.....	60p
Melon Wedge	90p
Yoghurt.....	70p
Cold Puddings.....	from 80p
Traybakes.....	90p
Speciality Cakes	£1.20

A selection of the above available daily
www.shireservices.co.uk



[WS15]

LUNCH TARIFF

Meal Deals:

Chef's Special	£2.30
Chef's Special & Freshly-made Traybake	£2.60
Sandwich, Freshly-made Traybake & 500ml Water	£3.00
Pasta Deal	£2.60
(Pasta pot plus slice of garlic bread with traybake)	
Curry Deal	£2.60
(Curry pot plus nann bread with traybake)	

See menu and blackboards for daily options

Cold Stop Menu:

Large Baguettes	£2.30
Sandwiches	£1.80
Filled Wraps	£2.30
Sub Rolls	£2.30
Pasta Pots	£2.30
Salad Pots	£2.20
Plated Protein Salad	£2.40
Vegetable Bags	80p

Street Food:

Bean Burger	£1.90
Cheese Burger	£2.20
Burger	£2.00
Hot Pasta or Curry Pot	£2.30

Pizzini	£2.30
Steak or Chicken Slice	£1.80
Chicken Epic	£2.40
Jacket Potato (with Butter)	£1.50
Jacket Potato (with 1 filling)	£2.20
Extra Filling	80p
Jumbo Hot Dog	£2.20
Hot Sub Rolls	£2.30
Folded Naan	£2.40
Hot Filled Wraps	£2.30
Paninis	£2.40
Garlic Ciabatta Pizza	£2.50
Box Meals	£2.50

To Follow:

Whole Fruit	60p
Fruit Bag	90p
Fruit Pot	£1.20
Vegetable Bag	70p
Melon Wedge	90p
Yoghurt	70p
Cold Puddings	from 80p
Freshly Prepared Traybake	90p
Speciality Cakes	£1.20
Cold Dessert Pots	70p
Drinks	from 70p

Available Daily - Sandwiches, baguettes, wraps, salads, fresh fruit, yoghurts, cookies, muffins & chilled desserts

Food Allergies & Intolerances
Before ordering, please speak to our staff about your requirements

www.shireservices.co.uk

(WS19)

Fresh DINING

LUNCH MENU

Wk 2	Monday	Tuesday	Wednesday	Thursday	Friday
Meal Deal Option 1	Meatballs in Tomato Sauce Garlic Bread	Lasagne Garlic Bread	Roast Beef Yorkshire Pudding Roast & Mashed Potatoes & Gravy	Chicken Tikka Masala Rice Naan	Fish & Chips Peas Curry Sauce
Meal Deal Option 2	Vegetable & Cheese Parcel Potato Wedges	Mac 'n' Cheese Garlic Bread	Meat (free) Balls Yorkshire Pudding Roast & Mashed Potatoes & Gravy	Cowboy Pie Crusty Bread	Cottage Pie Peas
POT Option 3	Oodles of Noodles	Meatball Marianna	Chicken Curry	Tomato & Basil Pasta	Chicken Curry
Loaded Tray Option 4	Fishcake Chips Peas & Curry Sauce	Chicken Fried Rice	Cheese Topped Vegetarian Chilli Loaded Nachos	Sausage Mash Baked Beans	Pizza Chips
Grab & Go Option 5	Balti Chicken & Rice Wrap	Chicken Epic	Beef Burger	Chicken Meatball Sub	Loaded Naan
Grab & Go Option 6	Hot Cheese & Tomato Sub	Vegan Burger	BBQ Meat (free) Ball Sub Sub	Piegata Calzone	Vegan Sausage Roll

Available Daily - Sandwiches, baguettes, wraps, salads, fresh fruit, yoghurts, cookies, muffins & chilled desserts

Food Allergies & Intolerances
Before ordering, please speak to our staff about your requirements

www.shireservices.co.uk

Fresh DINING

TERM DATES

2025 – 2026

Holiday	School Closes On	School Re-opens On
Summer Term 2025	Friday 18th July 2025	Wednesday 3rd September 2025
Autumn Mid-Term	Thursday 23rd October 2025	Monday 3rd November 2025
Christmas Holiday	Friday 19th December 2025	Tuesday 6th January 2026
Spring Mid-Term	Friday 13th February 2026	Monday 23rd February 2026
Easter Holiday	Friday 27th March 2026	Monday 13th April 2026
Summer Mid-Term	Friday 22nd May 2026	Monday 1st June 2026
End of Summer Term	Friday 17th July 2026	TBC

Staff Development Days

- ✂ Monday 1st September 2025
- ✂ Tuesday 2nd September 2025
- ✂ Monday 6th October 2025
- ✂ Friday 24th October 2025
- ✂ Friday 28th November 2025
- ✂ Monday 5th January 2026
- ✂ Monday 20th July 2026

Bank Holidays

- ✂ Monday 4th May 2026

Shape

⚠ Please Note: Staff development days are provisional and may be subject to change. Please check the **school website and half-termly newsletters** for any updates.

