



---

# Plover Pupil Leadership Team

---



# What is a general election?

It's when people vote to decide who will represent their area in the House of Commons

General elections usually happen every five years

If you're over 18, you can vote!



# What happens **before** a general election?

Candidates from different political parties will try to persuade people to vote for them.

Each candidate will explain why they would make a good MP and what the political party they are part of would do if they were the government.



# What happens **before** a general election?



Some candidates will give interviews on the TV, radio and in the newspapers. They will explain why people should vote for them and talk about the political party they are part of.

# What happens **before** a general election?

In their local area, candidates will go out to meet people who live there.

They will discuss the important issues which affect their area – called a constituency.

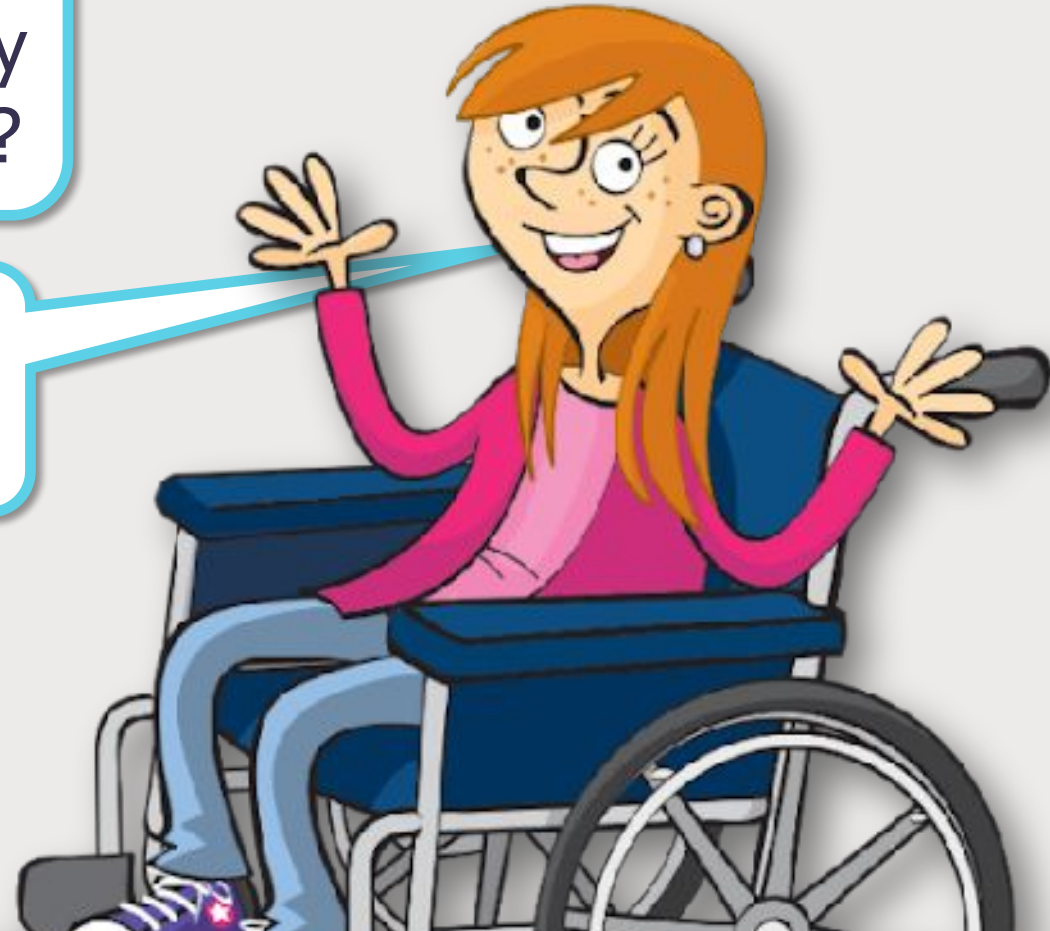


# What happens **before** a general election?



Do you know the name of any political parties?

Have you ever met an MP?



# What happens **before** a general election?

People over 18 years old can vote in a general election.



But they need to remember to register to vote and take their ID!

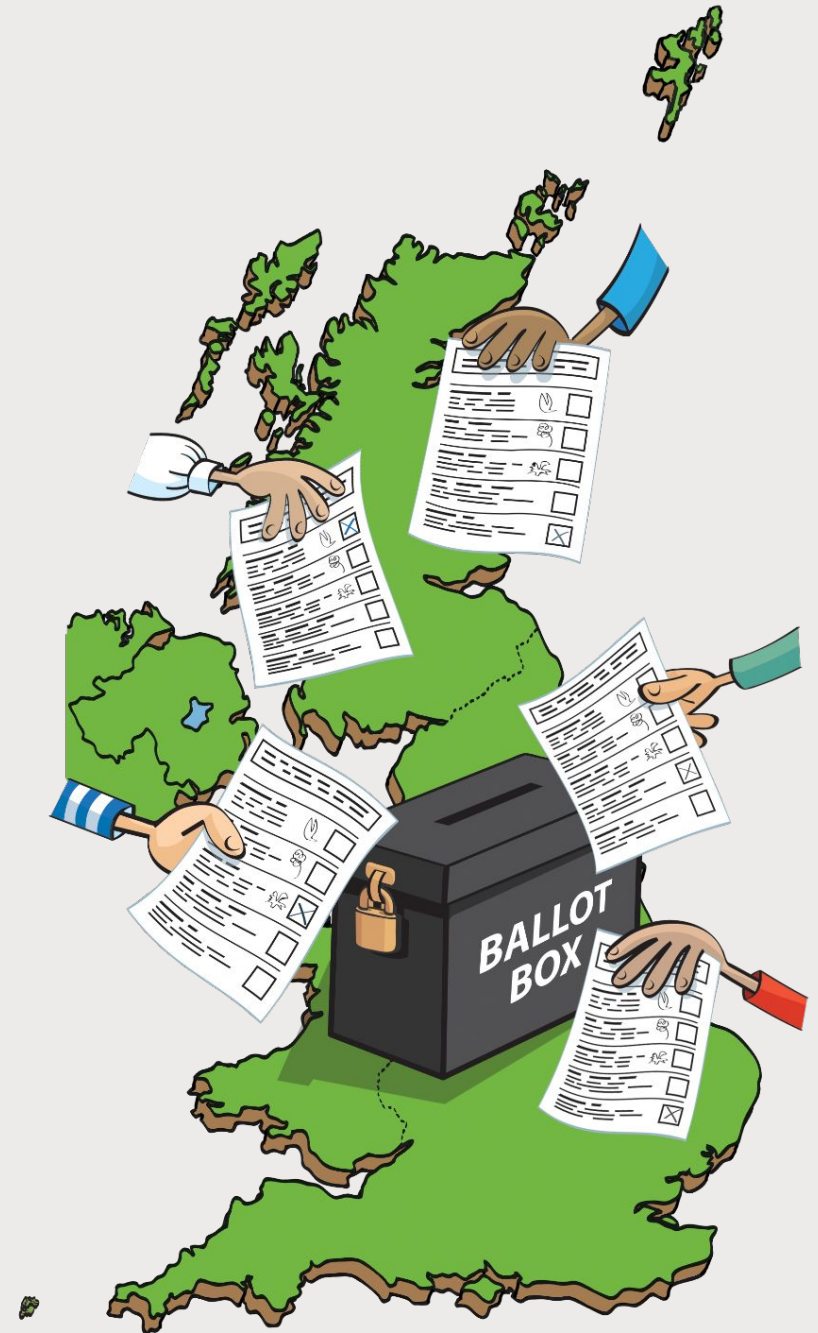


# What happens **on the day** of a general election?



People all over the UK visit polling stations to vote.

Sometimes schools are used as polling stations!

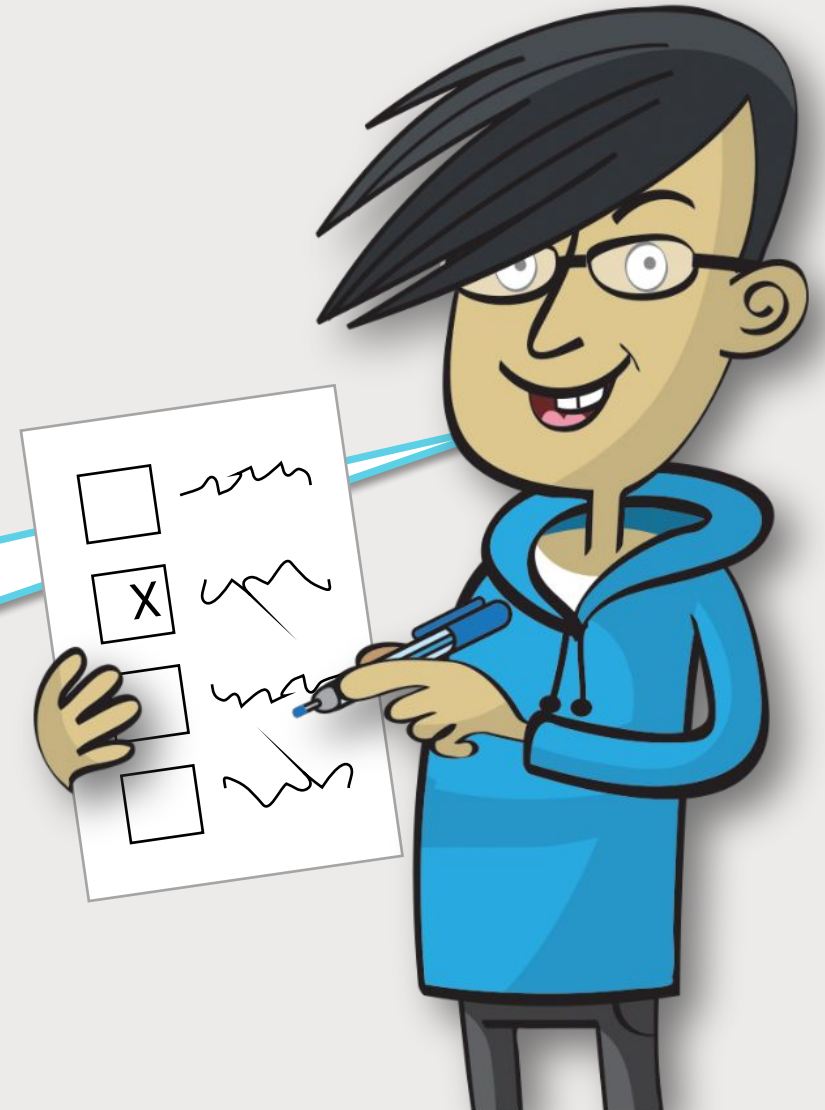




# What happens **on the day** of a general election?

At the polling station, people receive a ballot paper. It has a list of candidates names and the parties they represent.

You mark an 'X' next to the name of the person you are voting for.



# What happens **on the day** of a general election?

After the polling stations close, the votes get counted through the night!



**We are creating a Plover Pupil Leadership Team.**

**This will be your chance to make a difference in our school!**

**What do you think are the important issues at our school?**

**What would you like to see changed or improved?**

**Do you have ideas to improve the lives of people at our school?**

**We are looking to elect:**

**A Pupil Headteacher**

**Three Pupil Assistant Headteachers**

**Could this be you?**

# What happens **before** a general election?

You will need to decide on your manifesto. This will be a series of issues you are going to campaign about.

You will then need to persuade the voters that you are the right person to represent them!

Each candidate will explain why they would make a good Pupil Leader.



# What happens **before** a general election?

[Click here to watch an example election video](#)



You will need to create a poster and a 30 second video to share with the potential voters.

Deadline for your application is Thursday 27th June.

Campaign videos will be shared 1-3 July

Voting will take place on 4th July

The background image shows a large, ornate hall with green leather seating and wooden paneling. The hall has a high ceiling and a central doorway. The seating is arranged in rows, and the walls are covered in wood paneling. The overall atmosphere is formal and grand.

# What happens **after** the pupil leadership election?

The four pupils with the most votes will become members of the Pupil Leadership Team.

The pupil with the most votes will be nominated to become the Pupil headteacher.



---

# Plover Pupil Leadership Team

---

