

# Careers week assembly

2024

National Careers Week

**NCW**

# Careers education at PCHS

- The school has a Careers Leader - Mr Nesbitt
- It is my responsibility to support students on to the appropriate next steps.
- Over year 9, 10 & 11 you will experience a range activities, such as
  - Assemblies - Apprenticeships, university and employment.
  - Careers and apprenticeship evenings
  - A careers week (year 10)
  - PCS lessons
  - Receive labour market information updates
  - Trips and visits
  - At least one 1:1 careers appointment before the end of year 11
- A range of other support throughout your time within school and sixth form.

National Careers Week

**NCW**

# Reminder - When you leave year 11

You all need to be aware that when you finish year 11 you must do one of the following:

- Stay on at sixth form.
- Go to college.
- Get an apprenticeship.

**This is a legal requirement until you are 18 years old.**

National Careers Week

**NCW**

# Labour market information (LMI)

National Careers Week

**NCW**

## Why do I need LMI?

- It basically tells you about the jobs that are available in the area where you live.

National Careers Week

**NCW**

# The NorthEast



**1.22 million people aged 16 to 64**

**859,000**  
in employment  
(plus 31,000 aged 65+)

**55,000**  
unemployed

**302,000**  
economically  
inactive

**206,000**  
part time

**91,000**  
self-employed

**71,000**  
of these  
wanting a job

## Main reasons for economic inactivity:



**Poor health**  
(99,000)



**Looking after family/home**  
(60,000)



**Study**  
(64,000)

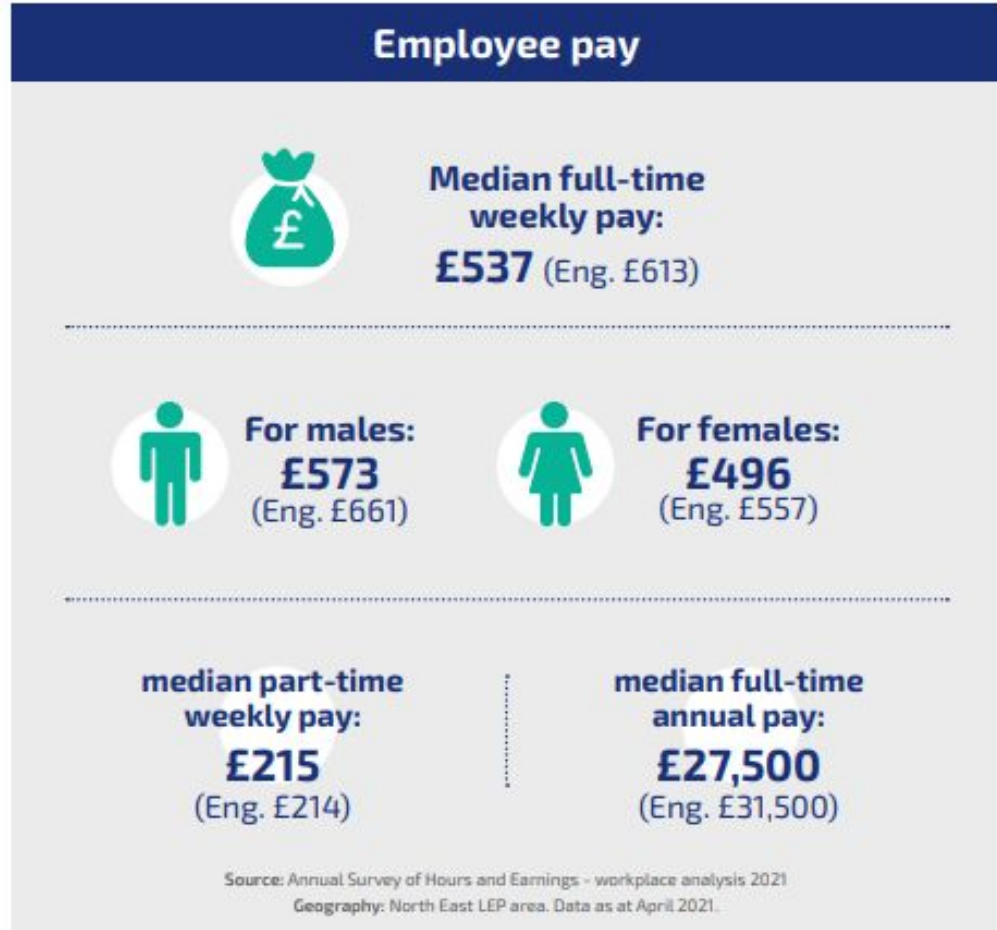


**Early retirement**  
(44,000)

Source: Annual Population Survey (Oct 2020-Sep 2021) Geography: North East LEP area

# The NorthEast

These are the average pay levels you can expect.



# The NorthEast - Top 12 Employment Sectors

## Employment by sector

 **Health** 16%  
(England 13%)

 **Manufacturing** 10%  
(England 8%)


 **Education** 10%  
(England 9%)

 **Retail** 9%  
(England 9%)

 **Accommodation and food services** 9%  
(England 7%)

 **Business admin and support** 8%  
(England 9%)

 **Public administration** 7%  
(England 4%)

 **Professional, scientific, technical** 5%  
(England 9%)

 **Transport and storage** 4%  
(England 5%)

 **Construction** 4%  
(England 5%)

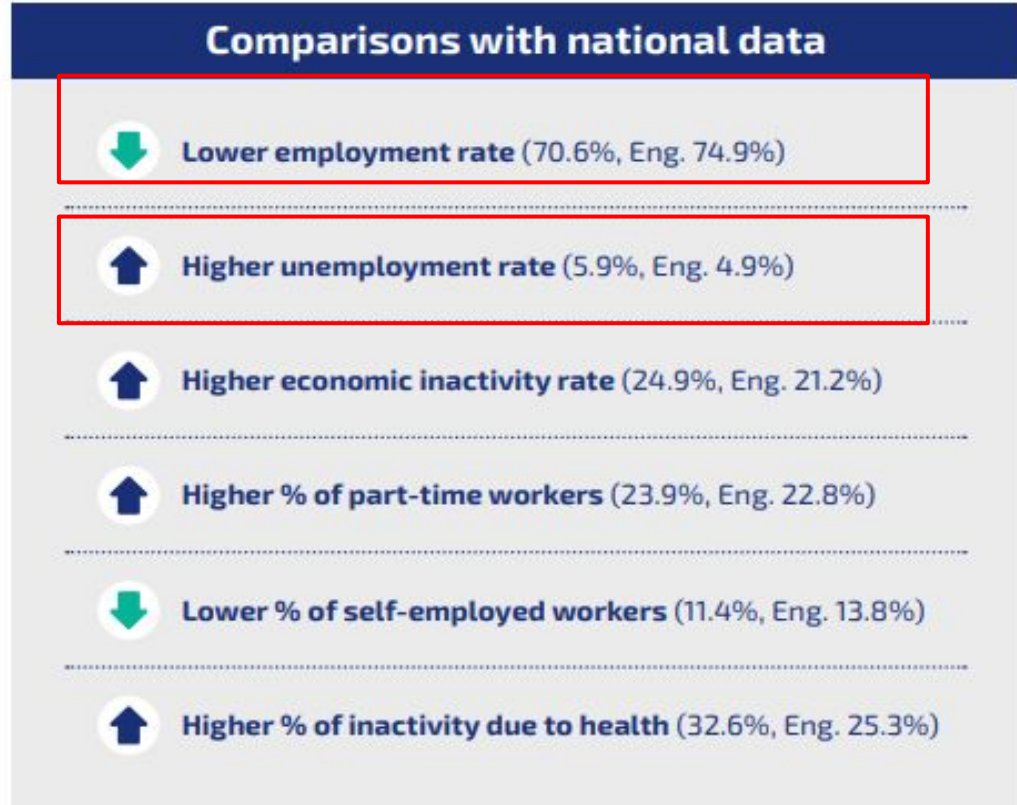
 **Arts, recreation and other services** 4%  
(England 4%)

 **Information and communication** 3%  
(England 5%)



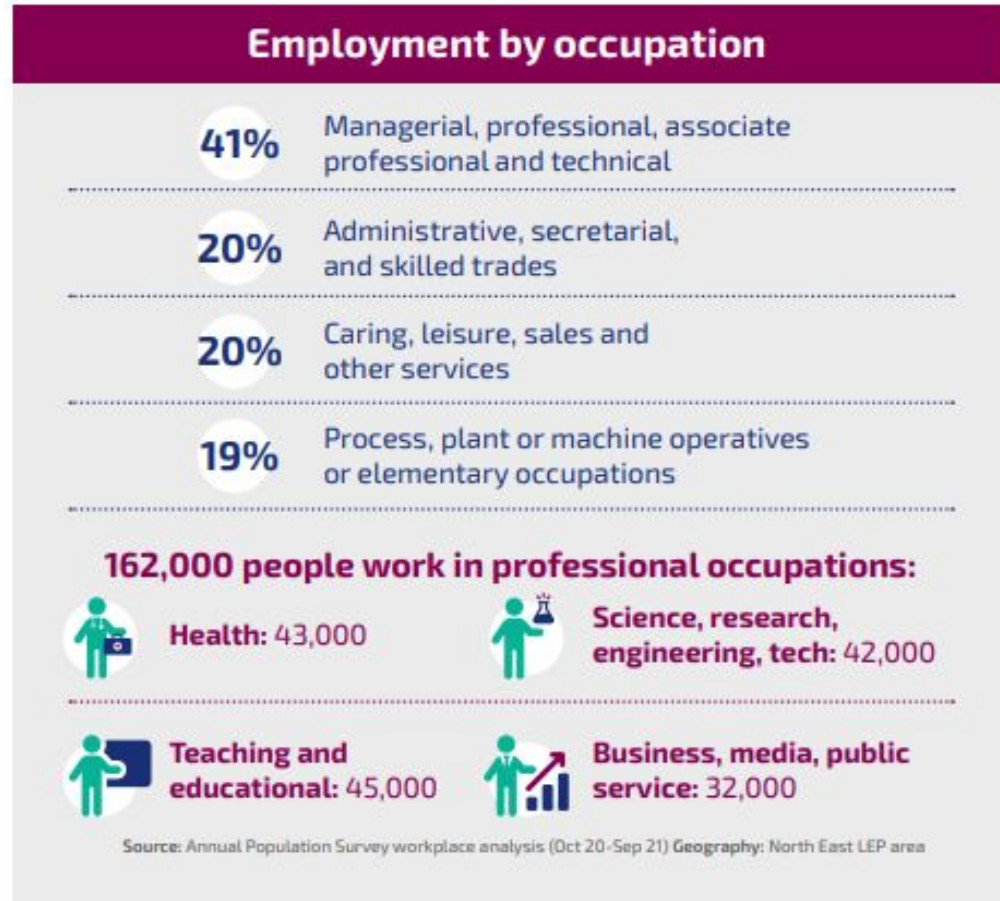
# The NorthEast

The sections highlighted in red show how many people are employed and unemployed in the North East.



# The NorthEast

This shows the percentage of people who work in different occupations.



# The NorthEast

These are the areas of the North East economy that are really important and are expected to grow the most in the future.

## Priority sectors

The North East LEP, the regional economic development body, has defined four areas of strategic importance:



Digital



Advanced  
manufacturing



Health and life  
sciences



Energy

These areas of strategic importance **employ almost 100,000 people**. They include over **7,300 businesses**, about 6% more than in 2015.

A further **250,000** people work in four enabling services that support the growth of the North East economy:



Construction



Education



Financial,  
professional,  
and business  
services



Transport and  
logistics

Sources: Business Register Employment Survey 2020 and UK Business Count 2021. Data relates to VAT and PAYE registered businesses only, sector definitions based on 5 digit SIC codes selected by the North East LEP. Next update: Sep 2022

# The NorthEast

This shows the same information broken down by occupation.

