

2025 Year 11 Annual Activity Survey (Moving on Survey)

Description of what is in the dashboard

The survey relates to the activity of all young people who have reached the compulsory school leaving age in 2025 on or around 1 November 2025. Those pupils with unknown or NEET destinations, may have since established an alternative destination, but this is not presented here. Other school/college and unknown employer destinations refer to pupils that have an EET (Education Employment Training) status, however the specific establishment name is unknown. Please note that some destinations have been suppressed due to sensitivity. This dashboard also includes the 2025 September Guarantee information for these pupils.

Key Headlines

Percentage of West Sussex Young People in EET

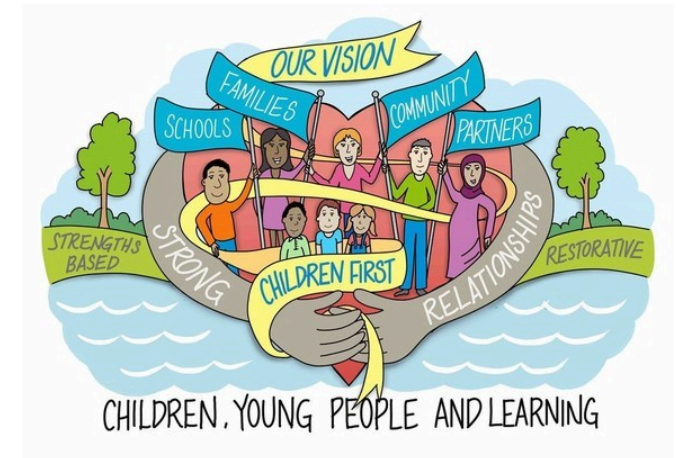
94.6%

Percentage of West Sussex Young People in NEET

2.5%

Percentage of West Sussex Young People Unknown Destination

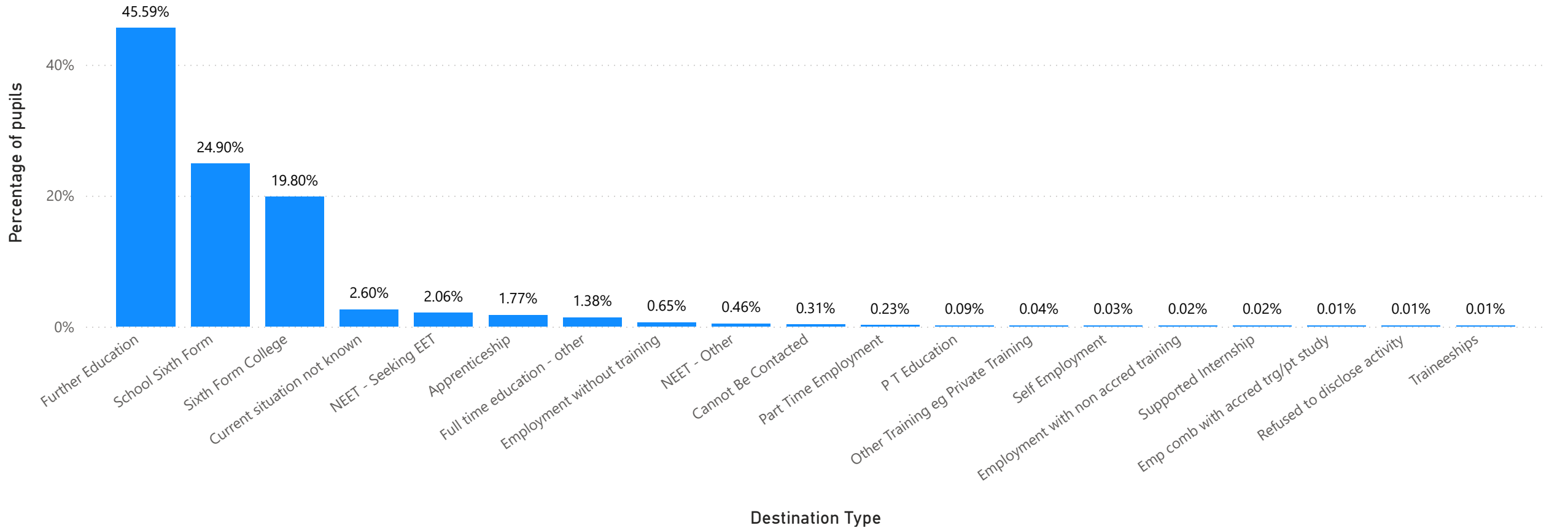
2.9%



*Please note these figures do not add up to 100% due to the suppressing of the data.

West Sussex Pupil Destinations by Destination Type

West Sussex Pupil % by Destination Type - Academic Age 16 (Year 11)

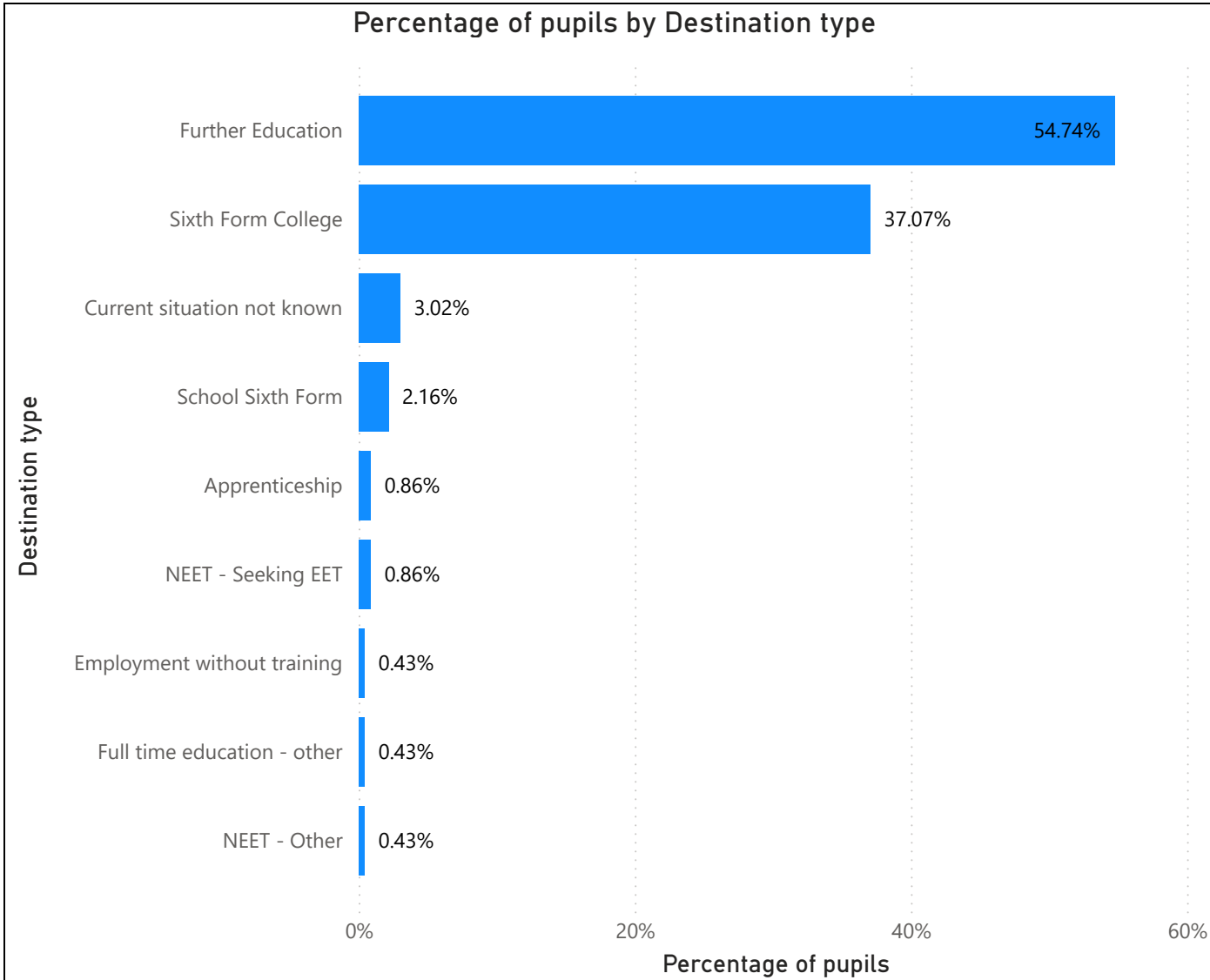


Destination of pupils by Year 11 School

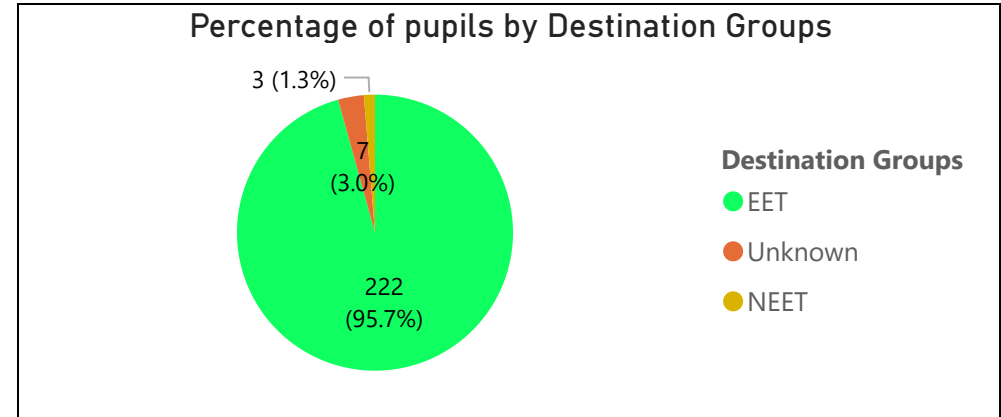
School v

Oathall Community College v

Percentage of pupils by Destination type



Percentage of pupils by Destination Groups

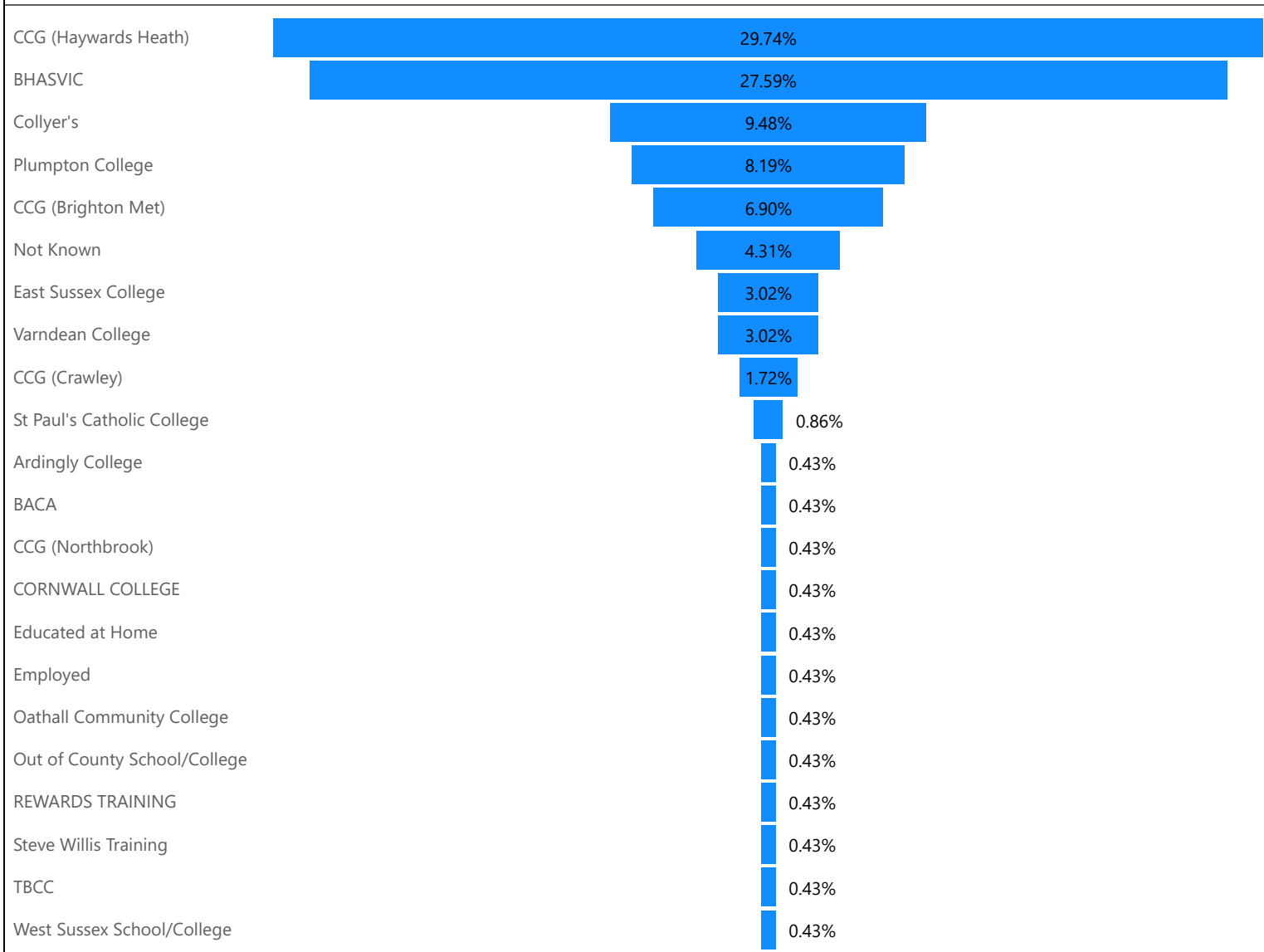


Destination Groups	Number of pupils	Percentage of pupils
EET		
Apprenticeship	2	0.86%
Employment without training	1	0.43%
Full time education - other	1	0.43%
Further Education	127	54.74%
School Sixth Form	5	2.16%
Sixth Form College	86	37.07%
NEET		
NEET - Other	1	0.43%
NEET - Seeking EET	2	0.86%
Unknown		
Current situation not known	7	3.02%

Destination of pupils by Year 11 School Actual Destination

Oathall Community College

% of pupils by Actual Destination



232

Number of pupils

Actual Destination	Number of pupils
CCG (Haywards Heath)	69
BHASVIC	64
Collyer's	22
Plumpton College	19
CCG (Brighton Met)	16
Not Known	10
East Sussex College	7
Varndean College	7
CCG (Crawley)	4
St Paul's Catholic College	2
Ardingly College	1
BACA	1
CCG (Northbrook)	1
CORNWALL COLLEGE	1
Educated at Home	1
Employed	1
Oathall Community College	1
Out of County School/College	1
REWARDS TRAINING	1
Steve Willis Training	1
TBCC	1
West Sussex School/College	1

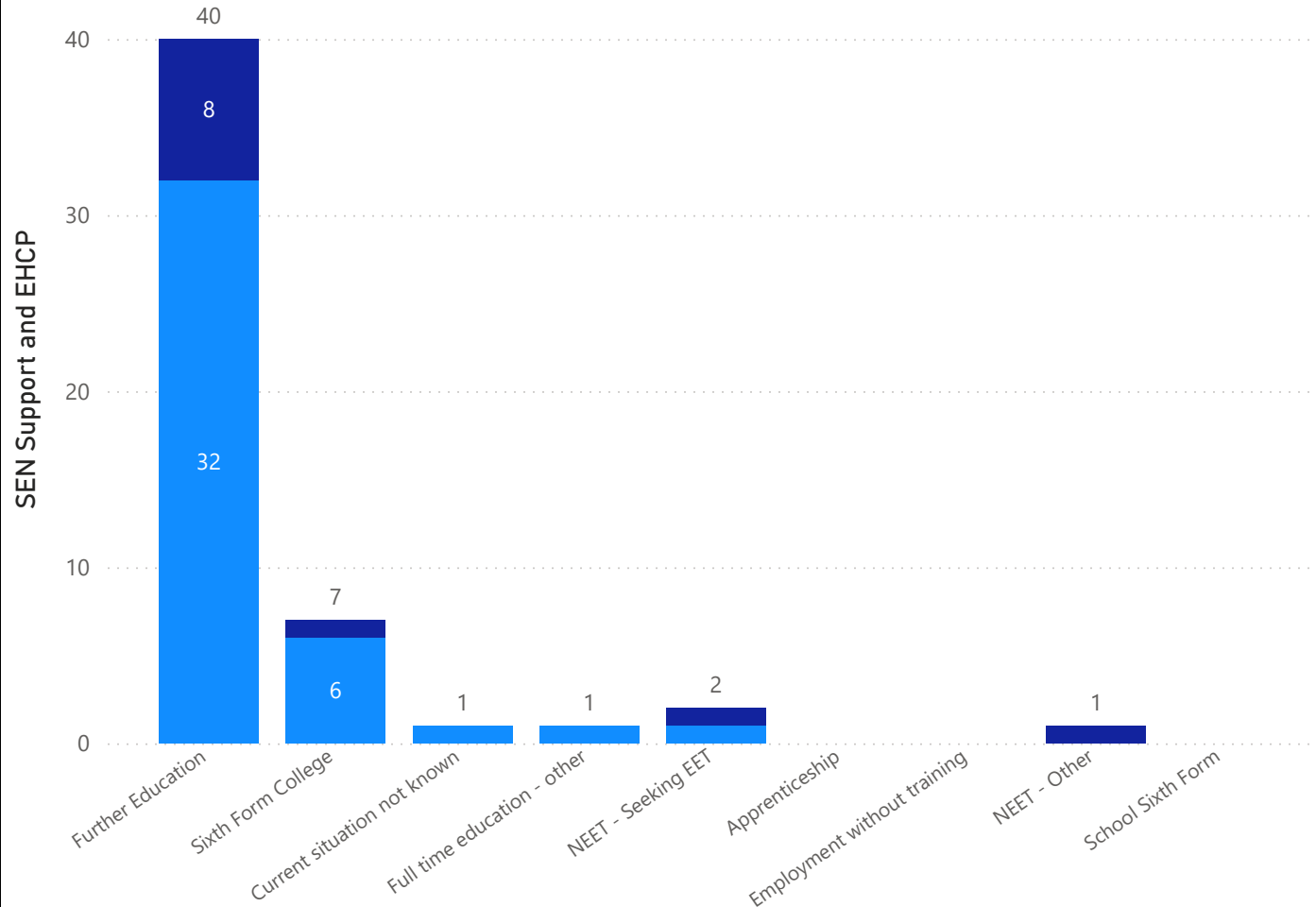
Destination of pupils by Year 11 School - SEND Destination

School

Oathall Community College

SEN Support and EHCP by Destination type

● SEN Support ● EHCP



11
EHCP

41
SEN Support

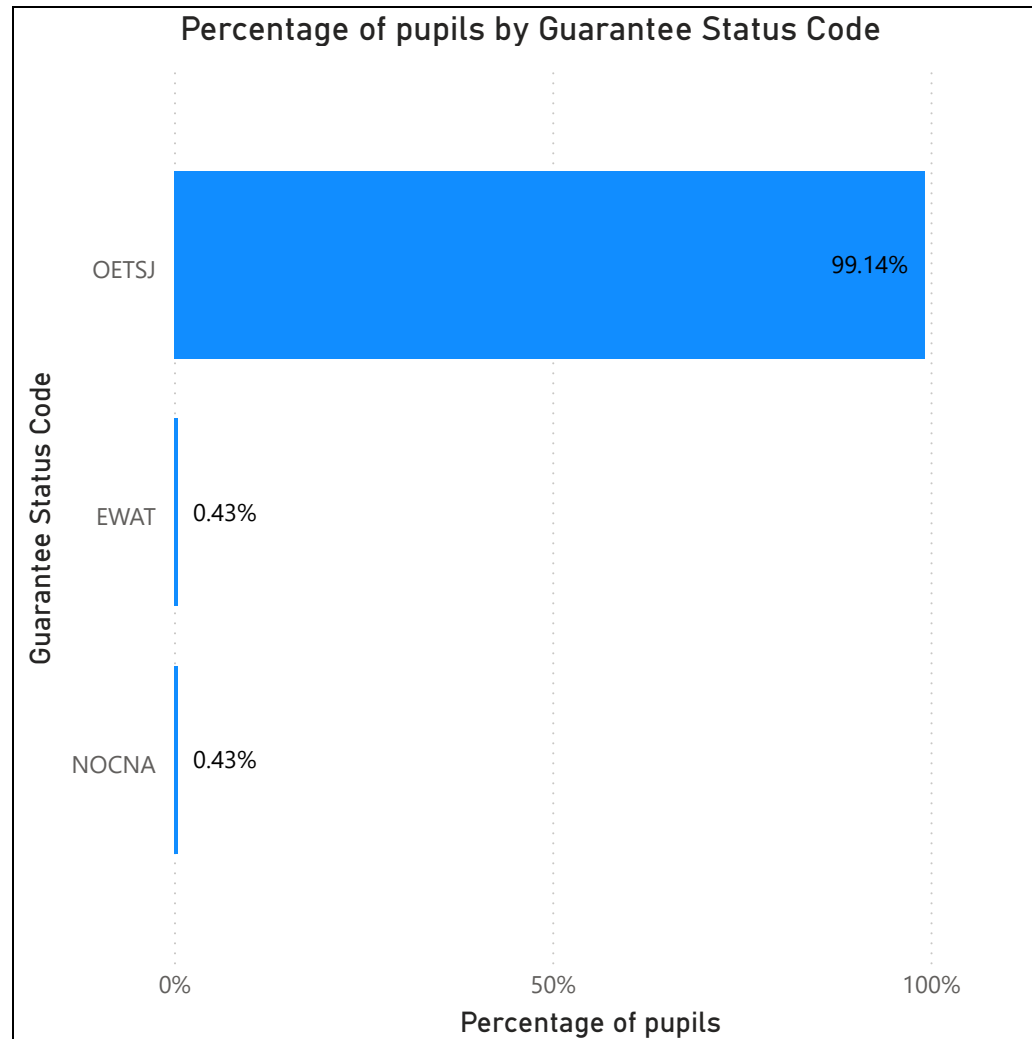
Destination Type	EHCP	SEN Support
Further Education	72.73%	78.05%
Sixth Form College	9.09%	14.63%
Current situation not known	0.00%	2.44%
Full time education - other	0.00%	2.44%
NEET - Seeking EET	9.09%	2.44%
Apprenticeship	0.00%	0.00%
Employment without training	0.00%	0.00%
NEET - Other	9.09%	0.00%
School Sixth Form	0.00%	0.00%
Total	100.00%	100.00%

September Guarantee of pupils by Year 11 School

Please note the data collection for the data on this page closed at the end of September 2025 and can no longer be changed.

School ▼

Oathall Community College ▼



September Guarantee Key

Guarantee Status	Guarantee Status Code
▲	
Already in or going into employment without accredited training	EWAT
No Offer Made - Considering options/not applied for learning	NOCNA
Offer Made - Offer of education and training to start before Jan	OETSJ

Guarantee Status Code	Number of pupils	Percentage of pupils
OETSJ	230	99.14%
EWAT	1	0.43%
NOCNA	1	0.43%
Total	232	100.00%