

OATHALL COMMUNITY VALUES - PASTORAL CURRICULUM

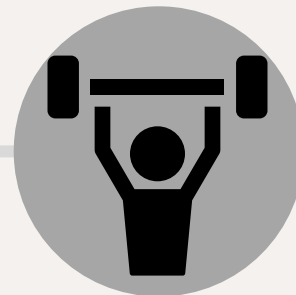
How you can demonstrate and develop the Oathall Values in an academic year through the pastoral curriculum and behaviour at break and lunch time

RESPECT



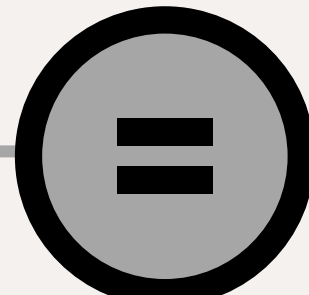
- Politeness in communication with staff and students
- Punctuality to tutor time and lessons
- Following school rules without confrontation
- Not using inappropriate language towards others
- Show kindness to others
- Wear uniform correctly

RESILIENCE



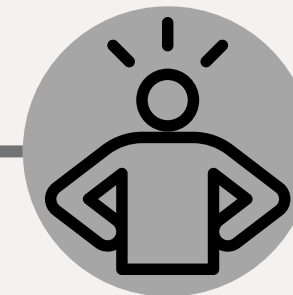
- Completing homework
- Managing feeling of nervousness and apprehension
- Developing your own coping mechanisms
- Students demonstrating the ability to resolve issues themselves
- Reflecting on academic and well-being progress
- Understand that failure is the key to success
- Aim for 100% attendance

EQUALITY



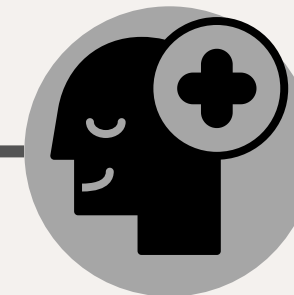
- Everyone is encouraged to take part in all school activities
- Respecting the diverse community at Oathall
- Accept and celebrate differences
- Celebrate and educate about awareness weeks
- Non-judgmental behaviour

CONFIDENCE



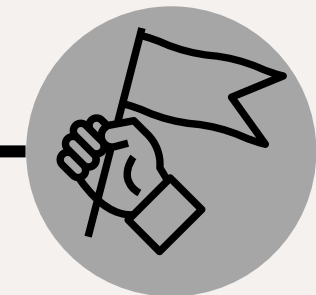
- Ask for help
- Join clubs
- Explore new friendships
- Take on leadership roles
- Be proud of who you are. Be your best self!
- Try new things
- Present in assemblies
- Engage yourself in tutor group discussions and be courageous in making your own point of view heard

POSITIVITY



- Embrace change
- Grab every opportunity
- Be proud of achievements and share successes
- Assume you can achieve anything
- Support and promote the House charity
- Build only positive relations
- Smile
- Practice gratitude

INDEPENDENCE



- Problem solve
- Always be prepared
- Organise and contribute to Community Day
- Find solutions yourself
- Take responsibility for your own uniform, equipment and homework
- Make your own decisions and choices
- Have your own opinion