

OATHALL COMMUNITY VALUES - ART AND DT

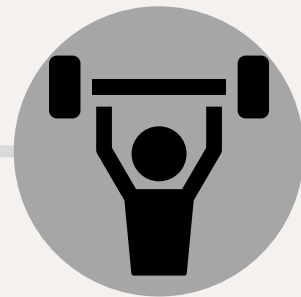
How you can demonstrate and develop the Oathall Values in an academic year

RESPECT



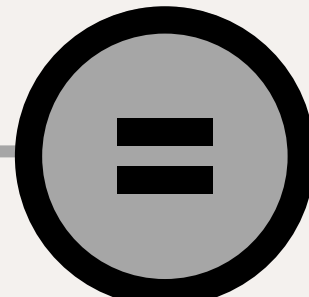
- Look after resources and treat them with respect.
- Engage fully with teacher demonstrations of practical work.

RESILIENCE



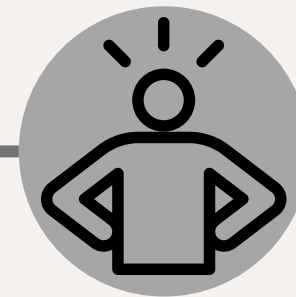
- Act on teacher feedback and be prepared to refine your work.
- Be determined to solve problems and improve your skills.

EQUALITY



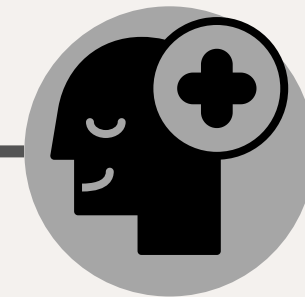
- To celebrate the work of a range of artists and designers.
- To appreciate art and design from a range of cultures.

CONFIDENCE



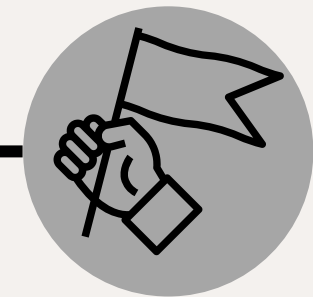
- Be confident and ambitious with your ideas.
- To be able to talk about your own and others' work, articulating what specifically you have done well and what you can improve.

POSITIVITY



- To engage with every lesson with a 'can do' attitude.
- Engage with extra curricular activities including clubs and competitions.

INDEPENDENCE



- To apply your understanding gained from teacher demonstrations to practical tasks and make a start independently.
- To self evaluate throughout project work and be thoughtful when creating your action points.