

OATHALL COMMUNITY VALUES - PERFORMANCE

How you can demonstrate and develop the Oathall Values in an academic year

RESPECT



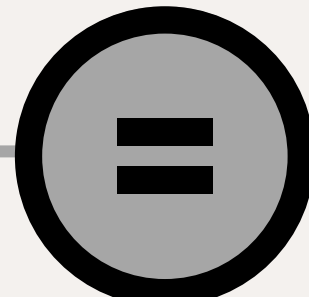
- Becoming a performer and appreciator with outstanding ethics, sportsmanship and etiquette
- Looking after equipment

RESILIENCE



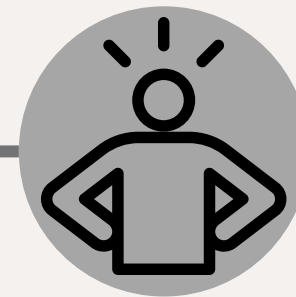
- To continue to find ways to develop and improve your knowledge, skills and understanding in sports and the performing arts

EQUALITY



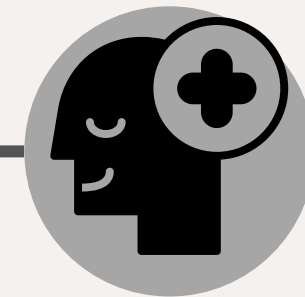
- Adopt and thoughtful approach to everything you do and value on your own and others' work

CONFIDENCE



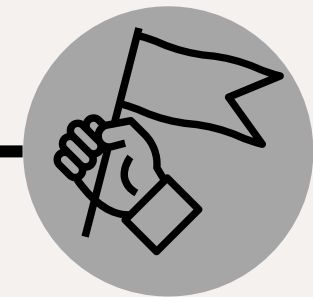
- To be courageous, to try new things and appreciate and recognise the qualities and skills in your own and others' work
- Be confident to perform in front of others

POSITIVITY



- Become a shining example of a positive mindset, even when you find something a challenge, to seek and see the enjoyment in your own and others' work

INDEPENDENCE



- Approach your work (in class at at home) with a love of learning and inquisitiveness, to research and discover new ideas for yourself, to practice skills and to strive to try your best in every activity or event