

OATHALL COMMUNITY VALUES - MFL

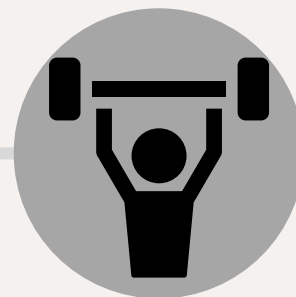
How you can demonstrate and develop the Oathall Values in an academic year

RESPECT



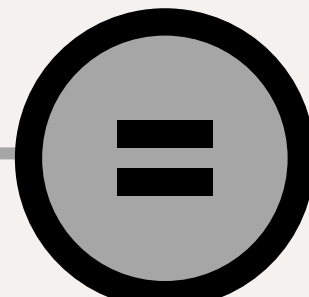
- Supporting peers with pronunciation, being a good sport when participating in competitions.
- To respect people from all around the world; to respect what we have in common as well as our differences.

RESILIENCE



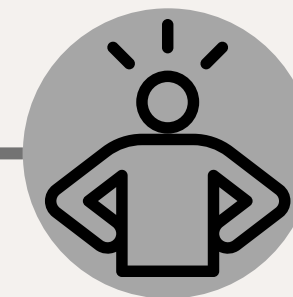
- Act positively on feedback, be willing to accept support.
- Understand that we need to have a positive mindset so we can develop skills and strategies to help us when we find things hard.

EQUALITY



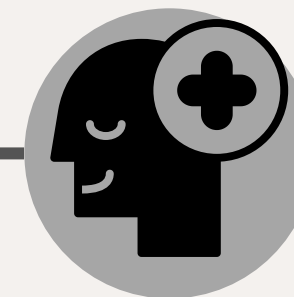
- To treat each other equally. To understand that we are equal, even if we are different from each other.

CONFIDENCE



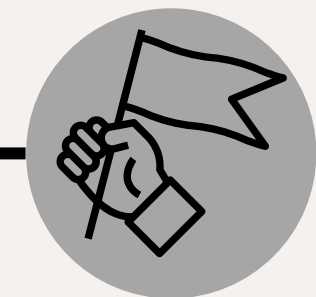
- Join in with speaking tasks and take opportunities to read aloud in TL.

POSITIVITY



- To begin every lesson with a positive mindset.
- Do your best every lesson and encourage others to have a positive approach to their learning.

INDEPENDENCE



- Making use of vocabulary booklets and other resources to complete classwork and homework independently.