

OATHALL COMMUNITY VALUES - SCIENCE

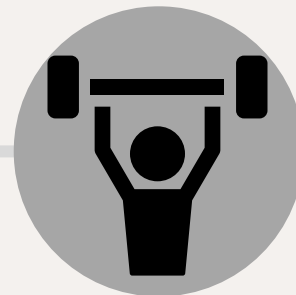
How you can demonstrate and develop the Oathall Values in an academic year

RESPECT



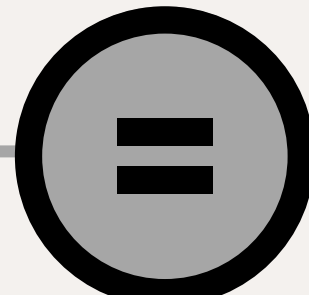
- Looking after equipment and treating it with respect.

RESILIENCE



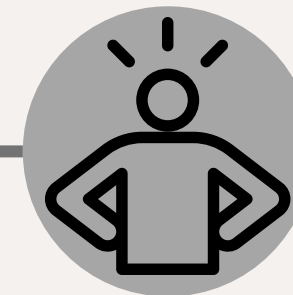
- To use AP's and feedback to learn from mistakes and ensure that you keep trying. Try to view mistakes positively, keeping a growth mindset.

EQUALITY



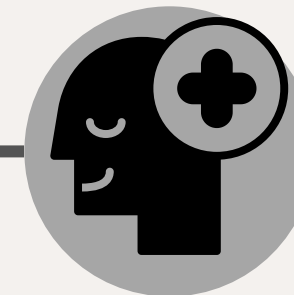
- To treat everyone equally and be able to work in a team. Accepting that everyone makes progress at different rates.

CONFIDENCE



- Be able to plan and carry out investigations independently and not be afraid of making mistakes.
- To answer questions in class and join in group discussions.

POSITIVITY



- To problem solve in the lesson and remain positive about the process of enquiry.
- To help boost others in the class and create a positive environment.

INDEPENDENCE



- Independently plan investigations.
- Take responsibility for equipment and completing homework on time.