

OATHALL COMMUNITY VALUES - MATHS

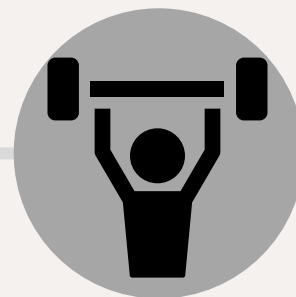
How you can demonstrate and develop the Oathall Values in an academic year

RESPECT



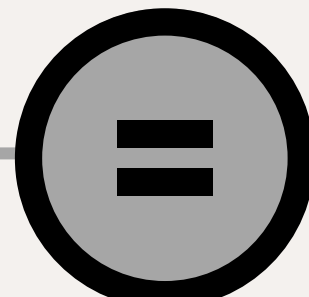
- Work collaboratively with other students respecting their mathematical answers.
- When using school resources, treat them as if they are your own.

RESILIENCE



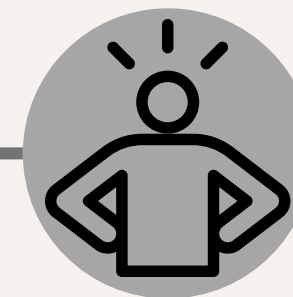
- To not give up when faced with a mathematical problem.
- Complete homework before the due date and contact your teacher for support where needed.

EQUALITY



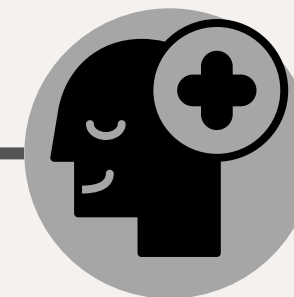
- Listening to other students' answers and mathematical ideas.
- To understand that some people may need to have different kinds of support but they are still equal.

CONFIDENCE



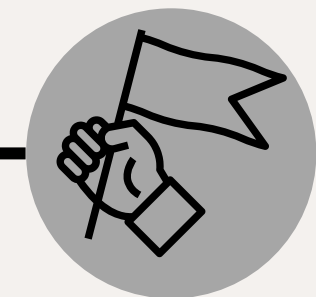
- Be prepared to make mistakes in the maths classroom.
- Use problem solving strategies in class work when working independently.

POSITIVITY



- Aim high in lessons by gaining credits, stickers and end of term postcards
- Challenge yourself in the classroom by choosing a higher level of work and appreciating the value of maths in real life.

INDEPENDENCE



- Look for connections across different mathematical topic areas.
- Have all your mathematical equipment in every lesson.
- Take pride in the presentation of your maths book, ensuring your class notes are neat and suitable for revision.