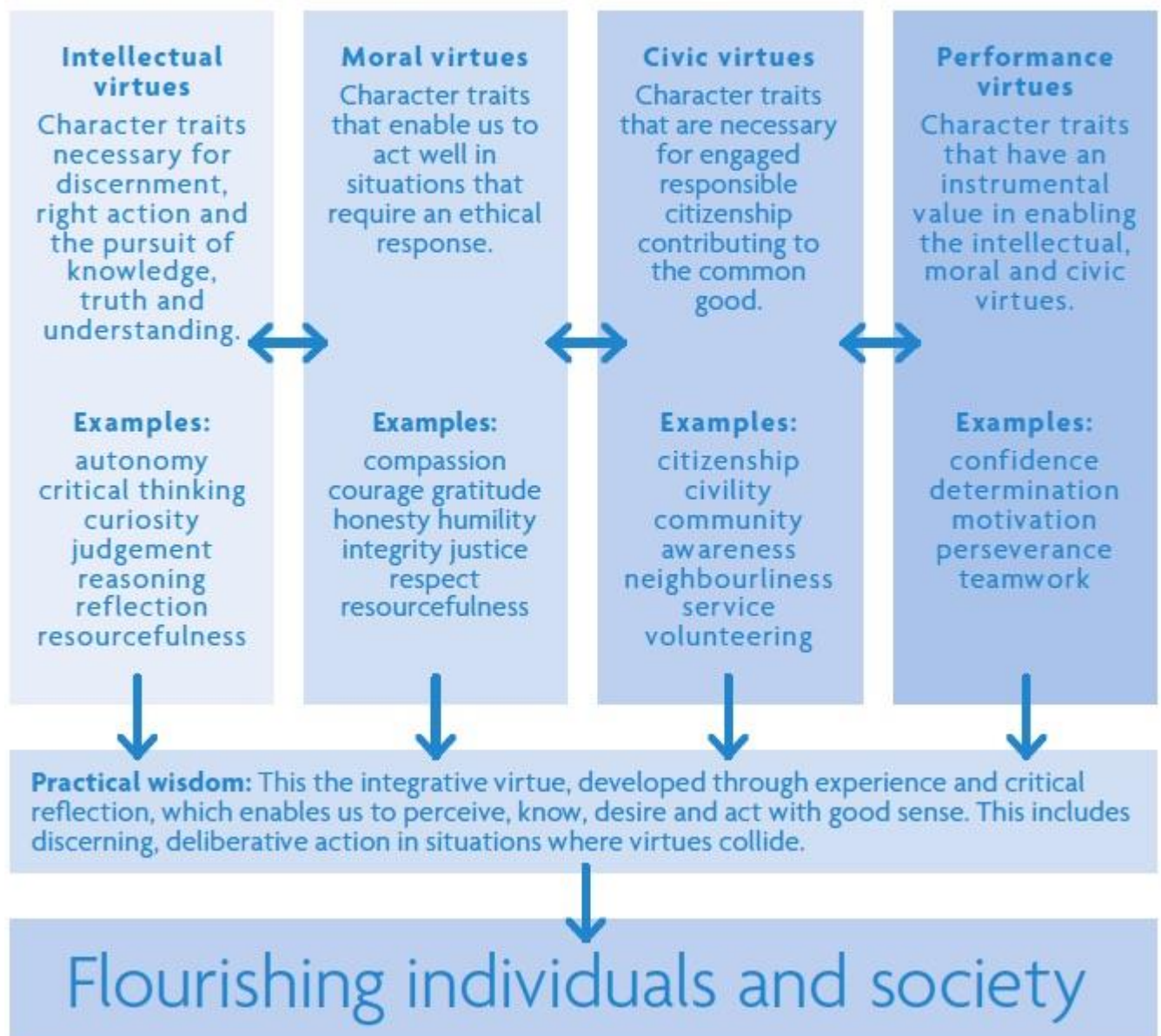


Character Education at St Joseph's

<p>What kind of a school are we?</p> <ul style="list-style-type: none"> • Articulate the school through our mission our Light values and connect to CST • All members of the community have been involved in this over the past year. • Children have a sense of belonging to the school and appreciate St Joseph's. 	<p>What are our expectations of behaviour towards each other?</p> <ul style="list-style-type: none"> • Reviewed behaviour policy with children. • Development of the Rewards • Consideration and courtesy to others through You're welcome. • Positive attitude rather than attainment in rewards at the end of the week.
<p>How well do our curriculum and teaching develop resilience and confidence?</p> <ul style="list-style-type: none"> • Curriculum is unapologetically ambitious • It teaches substantive and disciplinary knowledge. • The cultural capital is woven through the curriculum • It is logically organised and sequenced using a strong pedagogy so pupils gain a sense of progress and grow in confidence • Development of essential skills builder programme. • Development of PSHE curriculum and scheme. • Skills Builder programme launch Sept 23 with 8 essential skills for employment. 	<p>How good is our co-curriculum?</p> <ul style="list-style-type: none"> • Offer wide variety of educational trips from residential to local. • After school clubs concentrate on sports and other life skills eg cooking. • Sports partnership encourages teamwork and competition. • Annual Easter performance with Christmas nativities so that all children can perform. • Skills builder with 8 key skills. • Careers week March 24
<p>How well do we promote the value of volunteering and service to others?</p> <p>Mini Vinnies huge impact on this Termly acts of charity. Running of lunchtime clubs. School Council Head Boy and Head Girl Headstarters Open to suggestions eg homeless and clothes.</p>	<p>How do we ensure that all our pupils benefit equally from what we offer?</p> <p>Use of Pupil Premium to make sure have total engagement in key educational visits.</p> <p>All our activities enable children to feel like they belong and are valued.</p> <p>Young carers (3) within school are supported by the Junction termly.</p>

FIGURE 1:
THE BUILDING BLOCKS OF CHARACTER (JUBILEE, 2017, P. 5)



Intellectual- Refined curriculum and ambitious delivery PSHE and Skills Builder

Moral- Catholic Social Teachings

Civic- service- Mini vinnies, Catholic Social Teachings

Performance- creativity, range of instruments, performances