

ICT
Awesome Animators
Debugging programs

Music
Singing
Recorders

PSHE
Self awareness
Social skills
Empathy
Motivation

Topic
Do all rivers flow to the sea?
UK map work
The water cycle
Major cities in the UK
Coasts
Rivers in the UK

Science
This term we will be exploring the science topics of Animals including humans
Light

Art/Design Technology
Famous artists
Designing bridges

PE
Hockey and
Multi-skills.

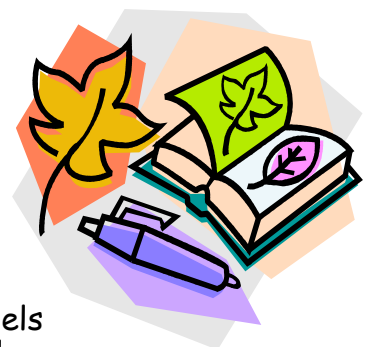
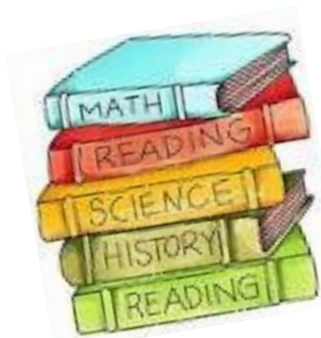
Literacy
List poems
Stories by the same author
Grammar and punctuation focus
Reading comprehension focus

Year 3
Do all rivers flow to the sea?

RE
Journeys
Listening and sharing
Giving all

Maths
This term we will be continuing to develop our mental maths skills including individual targets. We will continue to work on their key skills such as times tables, developing place value knowledge, using the four operations and problem solving. We will also be looking at statistics.

**St Margaret Clitherow's
Catholic School**
Spring 2018 Curriculum Newsletter



Year Group: Y3
Teacher: Miss S Crapper & Miss A Landels
1:1 support: Mrs A Murphy & Miss M Wilson

School Prayer
St. Margaret Clitherow,
Help us to be like you.
Help us to love and protect each other,
In everything we do.
Amen

Useful websites to support our work this term.

General/all subjects

* www.bbc.co.uk/schools/

Literacy

* <http://www.primaryhomeworkhelp.co.uk/literacy/>

Maths

* www.topmarks.co.uk/maths-games/hit-the-button

Science

* <http://www.ehc.com/vbody.asp> (the human body)

* http://www.bbc.co.uk/bitesize/ks2/science/living_things/ (animals including humans)

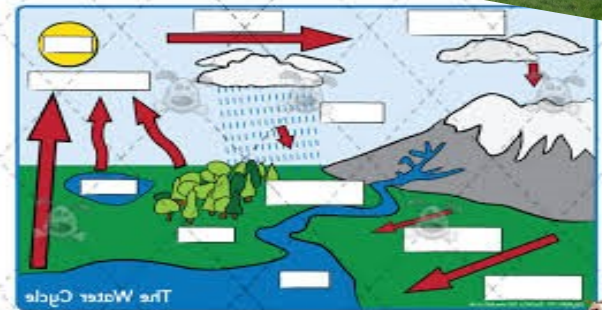
Topic

* <https://www.bbc.co.uk/education/topics/zqdwxb/resources/1>

* <http://www.primaryhomeworkhelp.co.uk/rivers/UK.htm>

Get Creative Projects!

This term, your children will be looking at UK rivers and bridges. As part of the topic we ask you to help your child to create a booklet. The booklet will include information all about one river in the UK. Furthermore, you may wish to help your child to recreate the river using model materials. This could include tissue paper for the water and the river banks. You may also wish to build a bridge using toilet roll cardboard, straws and any other appropriate materials. Get messy and have fun! I look forward to seeing all of the children's hard work.



Events this Term

- Thursday 1st February- Class photos
- Friday 2nd February- Mass 9am (All welcome)
- Tuesday 6th February- Safer internet day
- Thursday 8th February-Break up for half term
- Friday 9th February- School closed PD day

- Monday 19th February- Term begins
- February 27th- Parent consultation evening
- Thursday 1st March- Parent consultation evening and world book day
- Friday 2nd March- School mass 9am
- Friday 23rd March- 3L stay and pray at 2:45

- Thursday 29th March- Break up for Easter
- Friday 30th March- Good Friday

- Monday 16th April- term beings

Parents' Page

Homework				
Monday	Tuesday	Wednesday	Thursday	Friday
Spelling Reading Tables	Spelling Reading Tables	Spelling Reading Tables	Spelling Reading Tables	Spelling Reading Tables
	Maths			Literacy Spellings home

We are looking forward to another busy year, with a lot of hard work! The topic this term is "Do all rivers flow to the sea?" and we know that it will be lots of fun!

As we progress through Year 3, the standard of work expected is now much higher and we are challenging the children to produce better work, both in the quality and quantity. Hopefully, this will allow them to achieve their potential in all subjects! We will be there to help and support where necessary.

P.E. this term will take place on a Monday afternoon for Y3L, please ensure that your child has the appropriate kit—it will be outdoors if the weather permits, so a dark tracksuit will be useful in addition to the usual kit of white polo shirt, dark shorts and trainers.

Another reminder, to please send a labelled water bottle into school with your child everyday.

Maths homework will go out on a Tuesday to be returned on a Friday.

Literacy homework will go out on Fridays to be returned on Tuesday.

Spellings will go out on Friday to practised for the test on the following Friday.

Occasionally children will also be given topic homework to complete so please encourage this and help where possible. If you or your child have any questions please do not hesitate to ask. Please do not hesitate to contact us if you have any questions or concerns.

