

ICT
Awesome Animators

Music
Singing
Rhythm work

PSHE
Self awareness
Social skills
Empathy
Motivation

Topic
Who first lived in Britain?
Stone Age
Iron Age
Vikings

Science
This term we will be
exploring the science topics
of
Rocks
Light

Art/Design Technology
Cave paintings
Viking jewellery

PE
Dance, gymnastics and
Multi-skills.

Year 3
Who first lived
in Britain?

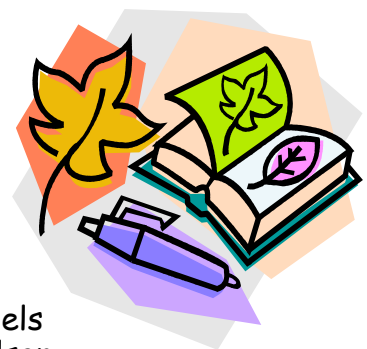
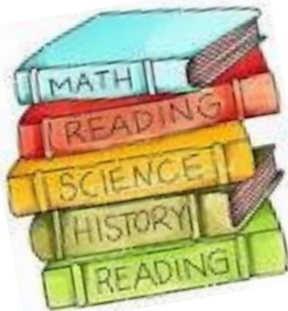
Literacy
Poetry
Adventure stories
Grammar and punctuation focus
Reading comprehension focus

RE
Homes
Promises
Visitors

Maths
This term we will be
continuing to develop our
mental maths skills and work
hard towards children's
individual targets. We will
continue to work on their key
skills such as times tables,
developing place value
knowledge, using the four
operations and problem
solving.

St Margaret Clitherow's Catholic School

Autumn 2017 Curriculum Newsletter



Year Group: Y3
Teacher: Miss S Crapper & Miss A Landels
1:1 support: Mrs A Murphy & Miss M Wilson

School Prayer
St. Margaret Clitherow,
Help us to be like you.
Help us to love and protect each other,
In everything we do.
Amen

Useful websites to support our work this term.



General/all subjects

- * www.bbc.co.uk/schools/
- * www.bbc.co.uk/schools/ks2bitesize
- * www.woodlands-junior.kent.sch.uk/Homework/index.html

Literacy

- * <http://library.thinkquest.org/J001156/index.htm>
- * www.coxhoe.durham.sch.uk/Curriculum/Literacy.htm (click on the KS2 section for literacy resources)
- * www.woodlands-junior.kent.sch.uk/interactive/literacy.html (Some of these are for younger children but scroll down to find the relevant activities. Some good games too).

Maths

- * www.topmarks.co.uk/maths-games/hit-the-button
- * <http://resources.woodlands-junior.kent.sch.uk/maths/>
- * www.nrich.maths.org.uk

Science

- * <http://resources.woodlands-junior.kent.sch.uk/revision/science/>
- * <http://www.ehc.com/vbody.asp> (the human body)
- * http://www.bbc.co.uk/bitesize/ks2/science/living_things/ (animals including humans)
- * <http://interactivesites.weebly.com/rocks-and-minerals.html> (rocks)

Topic

- * <http://www.bbc.co.uk/guides/z34djxs> (stone age)
- * http://www.ducksters.com/history/middle_ages_vikings.php

I STRONGLY RECOMMEND THE WOODLANDS WEB WEBSITE FOR ALL SUBJECTS.

Events this Term

- Friday 29th September—Macmillan Coffee Morning
- Tuesday 3rd October—John Burland visitor
- Friday 6th October—School Mass 9am
- Thursday 12th October—Y3C Stay and Pray 9:10am
- Friday 13th October—Individual photos
- Thursday 19th October—Break up for half term
- Friday 20th October— P.D. Day
- Monday 30th October—Back to school
- Friday 3rd November—School Mass 9am
- Tuesday 7th & Thursday 9th November—Parents Evening
- Friday 17th November—Children in Need
- Friday 1st December—School Mass 9am
- Friday 8th December—Christmas Fayre 2:45pm
- Friday 22nd December—Christmas holidays

Parents' Page

Homework

Monday	Tuesday	Wednesday	Thursday	Friday
Spelling Reading Tables	Spelling Reading Tables	Spelling Reading Tables	Spelling Reading Tables	Spelling Reading Tables
	Maths			Literacy Spellings home

We are looking forward to another busy year, with a lot of hard work! The topic this term is "Who first lived in Britain?" and we know that it will be lots of fun!

As we progress through Year 3, the standard of work expected is now much higher and we are challenging the children to produce better work, both in the quality and quantity. Hopefully, this will allow them to achieve their potential in all subjects! We will be there to help and support where necessary.

P.E. this term will take place on a Monday afternoon for Y3C and a Tuesday afternoon for Y3L, so please ensure that your child has the appropriate kit—it will be outdoors if the weather permits, so a dark tracksuit will be useful in addition to the usual kit of white polo shirt, dark shorts and trainers.

Another reminder, to please send a labelled water bottle into school with your child everyday.

Maths homework will go out on a Tuesday to be returned on a Friday. Literacy homework will go out on Fridays to be returned on Tuesday. Spellings will go out on Friday to practised for the test on the following Friday.

Please do not hesitate to contact us if you have any questions or concerns.

