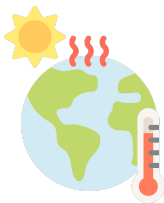


Artist - A person who creates paintings or drawings as a profession or hobby.



Bag - our final product is a sustainable shopping bag.

Charles - One of the significant people we studied during this expedition was King Charles III.



Climate - The description of the long-term pattern of weather in a particular area.

Coronation - The act or ceremony of crowning a king or queen.



Environment - All the physical surroundings on Earth are called the environment

Geographer - People who study geography are called geographers. Geographers are interested in Earth's physical features, such as mountains, deserts, rivers, and oceans. They are also interested in the ways that people affect and are affected by the natural world.





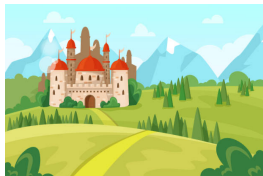
Historian - People trained in history are called historians. They may write books and articles to help other people understand the past.

Human features - Human features are things like houses, roads and bridges. They have been built by people.



Jemison - One of the significant people we studied during this expedition was Mae Jemison .

Journey - To travel from one place to another.



Kingdom - A community governed by a King or Queen.

Physical - Physical features like seas, mountains and rivers are natural. They would be here even if there were no people around.



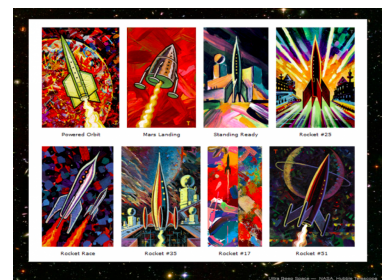
Portrait - A portrait is a painting or a photograph of a person's face and its expression.

Significant - Someone who has or is likely to have influence or effect.



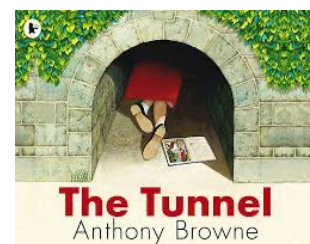
Space - Space, also known as outer space, is the area directly outside of Earth's atmosphere.

Thorpe - Peter Thorpe is an artist who is known for artwork featuring rockets and elements of space.



Travel - Travel is the activity of going from one place to another place.

Tunnel - The Tunnel was a core text we used to launch our expedition.



Weather - Weather is a description of what the conditions are like in a particular place.

**North, East, South,
West: Where could your
journey take you?**

Glossary