



# Weekly Newsletter

## Children in Need

What a wonderful day the children had last Friday! Thank you to all who donate and who got involved in our 25 challenges.

The 25 minutes silence seemed to be very popular with parents!



## ONLINE SHOPPING FRAUD WARNING

### A MESSAGE FROM GREATER MANCHESTER POLICE

In the run up to Christmas we know that some of you maybe turning to online shopping to purchase presents.

**WARNING** – We are aware that fraudsters are targeting this area and want to ensure our community is protected. We are working hard to bring to justice those responsible. Please see our tips for staying safe online.

Have you been offered a highly discounted or considerably cheaper product compared to the original items worth?

**STOP - THIS COULD BE FRAUD**

The website you are purchasing from was only launched day / weeks ago?

**STOP - THIS COULD BE FRAUD**

You're asked to pay by bank transfer instead of using the online platform's secure payment options.

**STOP - THIS COULD BE FRAUD**

A sense of urgency is placed on ordering the product or service so that you don't miss the price / deal.

**STOP - THIS COULD BE FRAUD**

You receive a fake email receipt / invoice that appears to be from the website you've purchased from or the payment service used to make your purchase. The email address domain doesn't match that of the genuine senders.

**STOP - THIS COULD BE FRAUD**

**ActionFraud**  
Report Fraud & Internet Crime  
[actionfraud.police.uk](http://actionfraud.police.uk)



**PRIMARY SPORTS COACHING LIMITED** **HOLIDAY Courses**

## Free HAF Xmas and New Year Sports Camps

Open to boys and girls in reception - year 7

Broadstone Hall Primary School, Norbury Hall Primary School & St Thomas CE Primary School (Heaton Moor)

Ofsted Registered Active Childcare

To learn more about our active holiday camps visit our website [www.primaryscl.co.uk](http://www.primaryscl.co.uk)

Places are available from **Monday 22nd December - Friday 2nd January** (please note not all settings are available everyday during this period).

11.30am - 3.30pm  
Top up and stay all day (9am-11.30am) for a small fee  
Early drop off (8am-9am) and stay and play (3.30pm-5pm) available to book

**Book your place online** via the 'Holiday Activities' website, your vouchers will be sent by email from [hello@holidayactivities.com](mailto:hello@holidayactivities.com).

**Staying a full day?** You can pay a small top up fee to stay at the holiday course for the full day. Email Stuart at [info@primaryscl.co.uk](mailto:info@primaryscl.co.uk) to find out how.

This Christmas and New Year Stockport Council and Primary Sports Coaching Limited are offering funded free places for children eligible for benefits-related free school meals at our Ofsted registered holiday course.

Every child will receive a free nutritious meal.

To learn more about our active holiday camps visit our website [www.primaryscl.co.uk](http://www.primaryscl.co.uk)

**07597 821 198** [info@primaryscl.co.uk](mailto:info@primaryscl.co.uk) [www.primaryscl.co.uk](http://www.primaryscl.co.uk)

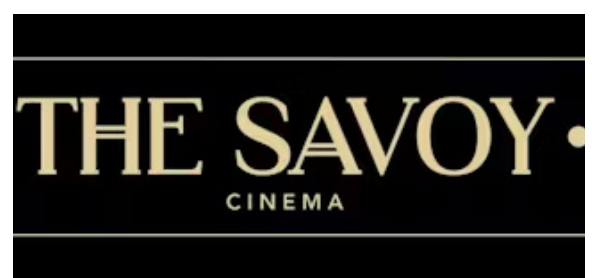
**Ofsted Registered**

Department for Education

## Cinema Trip

Monday and Tuesday saw the whole school go to The Savoy cinema to see 'The Grinch'. They all thoroughly enjoyed it and were a credit to the school.

Thank you to the PTA for organising and subsidising the trip. Also a big THANK YOU to all the parents who walked them to and from the cinema. We couldn't have done it without you.





# GROW STARS OF THE WEEK

## Reception

Sonnie S & Imogen M-S

KS1

Year 1: Rocco S & Autumn Mc

Year 2: Dusty Rose E-G & Albert H

KS2

Year 3: Freddie K & Joseph W

Year 4: Alfie H & Zara L

Year 5: Elodie S & Ronan W

Year 6: Kyra B & Joshua T

## Reminders

Could we again remind parents that the car park is for **staff cars only**. Unfortunately, it is a small car park and children are crossing it throughout the day. The school also receives deliveries throughout the day and the refuse is collected on two separate days. Please use the sports club opposite or surrounding streets.

If you, or your children, are coming into school on bikes or scooters, please dismount at the gate and push it through the school grounds. Children are arriving from 7.30am and leaving up until 6.00pm. This makes it very dangerous, particularly on these dark mornings and evenings. Thank you for your understanding and cooperation in both these matters.

## Christmas Plays

Panto and party time are almost upon us. **Oh no it isn't, oh yes it is!!** Your children will soon be coming home with 2 tickets for their afternoon performance and two for the evening. Please see time table for performance dates. Year 1, 'Songs in the Shed' will not have tickets as this will be performed outside. **Please be aware, if any children are coming to watch, they will also need a ticket.** Any spare tickets can be left at the office for parents who require more.

# Carols in the Park



**Heaton Moor Park** (SK4 4RG)

**Saturday, 13th Dec 2025**

**1:00 – 3:00 pm**

Join the carolling and enjoy –

**Stockport Schools Brass Band**

**Do Your Thing Choir**

**Santa's Grotto ♦ Tombola ♦ Games**

**Mince Pies ♦ Mulled Wine ♦ Hot Dogs**



**PLEASE BRING SOME CASH**

Not all stalls have card readers.



## DATES FOR THE DIARY

[For a full list of dates for the 2025-26 academic year, please see our Annual Planner which can be accessed by clicking on this link.](#)

Date	Event
<b>November</b>	
28th	Dress down day for bottle tombola and Christmas Fair
<b>December</b>	
2nd	Reception Christmas Nativity
5th	Christmas dinner and jumper day
9th	Year 2 Christmas Performance
12th	Year 1 Songs in the Shed
16th	Year 3 & 4 Carol Concert
18th/19th	Christmas Parties
19th	<b>Last day of term</b>
<b>January</b>	
6th	<b>First day of term</b>
7th	Year 3 (JW) visit to recycling centre
8th	Year 3 (JB) visit to recycling centre
21st	Parent's meeting for Year 3 residential - 5.00pm

