



**NEWHAM  
COMMUNITY  
LEARNING**

Local Schools | Global Vision

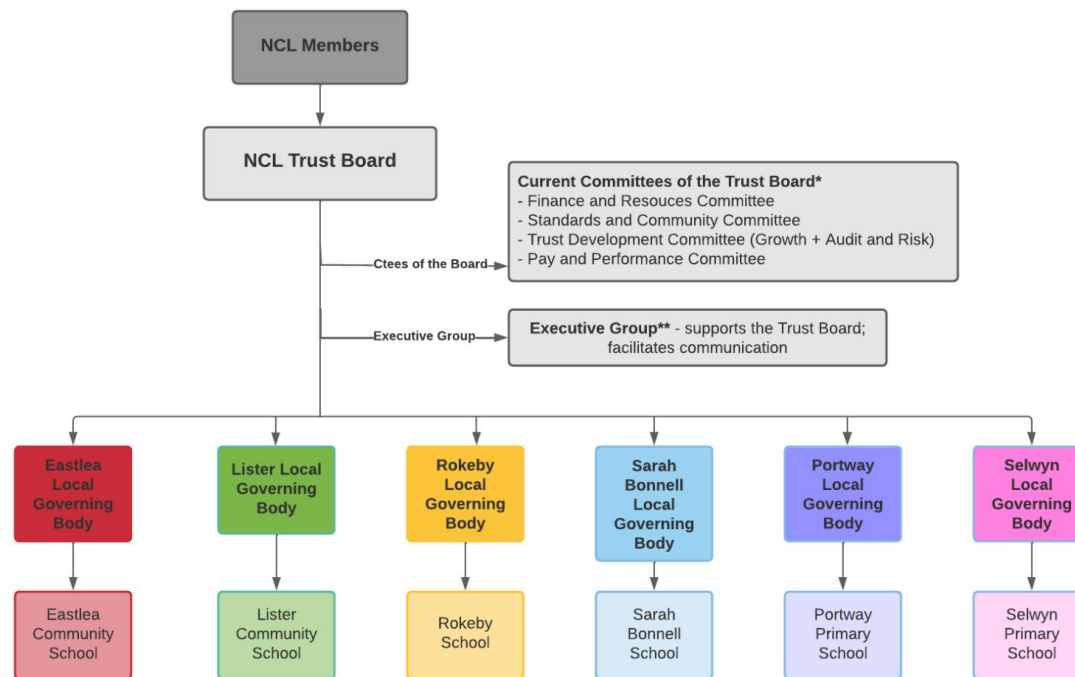
# Being a governor at a Newham Community Learning School

March 2024



# Local Governing Bodies at Newham Community Learning

## Governance structure



\* The Trust Board may establish any other committee: the constitution, membership and proceedings of which shall be determined by the Trustees. All committees have a Terms of Reference provide further detail, and which form part of the Scheme of Delegation.

\*\* The Executive Group provides a mechanism for developing the partnership between all schools and for the discussion and implementation of the Trust's strategy. It is chaired by the CEO and includes all Headteachers. The Terms of Reference provides further detail.

[NCLTrust.net](https://www.ncltrust.net)

## Why is effective governance necessary and what does it look like in practice?

- Vital for ensuring that schools operate efficiently, providing quality education for all students to achieve their potential.
- Key to promoting the well-being of students, teachers, and the broader community.

# Local Governing Bodies at Newham Community Learning

## Our Local Governing Bodies - what do they do?

- At the local school level, sets the overall vision, ethos and strategic direction of the school.
- Drives school improvement at their school - using the School Development Plan and the School Evaluation Plan.
- Using the Headteacher's Report, analyses pupil and staff data to help inform an understanding of how the school is performing. Supported by School Visits and Link Governor Visits.
- Being part of the local community that the school serves - supporting the work of the school leadership team to ensure that it is the school of choice for local families.
- Approval (as a 'first review') of the school's budget (which is then approved by the Trust Board).

# NCL - core governor responsibilities

## Setting the strategic direction

Governing bodies are the key strategic decision makers in every school. Along with the Headteacher, it is the job of a governing body to set the school's aims and objectives around how the school will develop and improve. They set policies, formulate plans and agree targets to help the school achieve these objectives, as well as regularly reviewing their strategic framework in light of that progress.

## Creating robust accountability

The governing body is there to support and challenge the school's senior leadership team. Governors play a crucial role in holding the Headteacher to account for securing the best possible outcomes for pupils. By challenging key decisions and asking pertinent questions about the school's performance data, governors aim to guarantee high standards in education.

## Ensuring financial probity

Governing bodies have a strategic role in the financial management of schools. Their key responsibilities include, setting financial priorities through the school development plan, the 3 year financial plan and the annual budget. They also decide on how the school's delegated budget should be spent in accordance with the school improvement plan and statutory curriculum requirement - including acting as the 'first level approvers' for the budget.

# Your commitment - what we expect

## Terms of office

Governor appointments are for a term of four years. Should individual circumstances change, governors are able to resign their roles. Any notice that can be given is very helpful.

## Liability

Governors are not **individually** liable. Liability is collective and held by the governing body as a whole. The Trust has the necessary safeguards in place - ie. is part of the DfE's Risk Protection Arrangements.

## Time requested per month

Governors are expected to attend all full governing body meetings - 3 at the Trust's primary schools, plus 3 day time School Visit Days - and 6 at the Trust's secondary schools. The preparation, participation and travel for these meetings, and training, will comprise 4-5 hours a month for 8 months of the year, mainly in the evenings.

Other involvement such as ad hoc panels and learning walks are not compulsory to attend, but we would strongly recommend you attend as many as possible to maximise your impact as a school governor.

# Termly overview - with thanks to Governors for Schools - Autumn Term



# Termly overview - with thanks to Governors for Schools - Spring Term

Data Drop Review of Pupil Progress



Budget Setting and Approval

Financial Resources and Personnel Review



Submit the schools financial value standard (SFVS)

Review audits and feedback from external advisers



School visits planned against the school improvement plan and to gather pupil feedback



# Termly overview - with thanks to Governors for Schools - Summer Term



# Other duties - with thanks to Governors for Schools

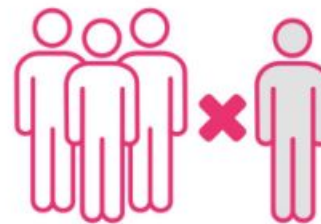
Parental  
Complaints



Exclusion  
Panels



Safeguarding  
Issues



Staffing /  
Personnel Issues



# Local Governing Bodies at Newham Community Learning

## Governance Administration

- Please refer to the governance area of the Trust Website, which contains the following pages:
  - [Structures and oversight](#)
  - [Funding and scheme of delegation](#)
  - [Policies](#)
  - [Governor information and login](#) [includes calendar of meetings]
  
- Please contact the Head's PA at your school, or Joy Parker (Central Team Support) on [joy.parker@ncltrust.net](mailto:joy.parker@ncltrust.net) for support.