



Welcome to Reception at

Thomas Bewick C of E Primary School

Part of Northumberland Church of England Academy Trust

Parent/Carer Guide 2024/25



A message from Miss Hodson - Headteacher

We are looking forward to welcoming your child to our Reception classes at Thomas Bewick C of E Primary School. In this booklet, you will find some information and some reminders for the new school year.

We hope your child is excited about starting Reception and we will help them to settle and be happy in school. If you would like to look at our website (www.thomasbewick.ncea.org.uk), you will be able to read more about our ethos and our school.

At Thomas Bewick, we recognise that parents are the first teachers of their child, and know them best. The information below is given so that we can work together to help support and encourage your child, so they can make the best start possible to their formal education and to their life-long learning.

Please contact us by phone or email if you have any further questions.

admintb@thomasbewick.ncea.org.uk
01670 812075

Meet the staff



Mrs Fraser
(Monday - Thursday)



Mrs Hills (Fridays)



Mrs Thompson
(Teaching Assistant)

Our school day

- 8.40am - Our doors open at this time and close at 8.45am
- All pupils head straight to registration and choose the day's lunch
- 9.00am Phonics
- 10.00am - Literacy
- 10.40am - Playtime
- 11.00am - Maths
- 12.00 - 1.00pm - Lunchtime
- 1.00 - 3.30pm - Enquiry activities
- 3.30pm - Hometime (Wednesdays at 2.00pm)



Please be on time every day. Lateness has a huge impact on your child's learning. The first lesson every day is phonics and we learn our new sounds at the start of each lesson.

Absence and attendance

If your child is absent from Reception please ring the school office on 01670 812075 on the day before 9.15am to let us know, this will prevent your child from being marked as an unauthorised absence. Any sickness or diarrhoea must be followed by 48 hours absence. Any attendance that falls below 96% will be monitored by the school.

If your child has any medical needs, allergies, or any special needs, please inform us and a medical form can be completed with you.



Collecting from school

You will be asked which family members will be collecting your child from Reception. If it is someone else, please inform us in advance. Otherwise, we are unable to let your child go with someone we do not recognise, for your child's safety.

Top Tip: Please keep all of our children safe by not parking on the yellow lines or the zig zag when dropping off or collecting your child from school.

Uniform



- White polo shirt, black trousers or skirt, purple sweatshirt or cardigan and black shoes (not trainers)
- Black shorts, white t-shirt and black sandshoes are also required for PE (this is to be left in school and will be sent home to wash at the end of each half term)
- A plain black tracksuit or a school branded track suit can also be worn for PE
- In the summer, purple checked dresses are also available.

Reception is a creative environment and therefore a very messy place! We do insist that the children wear aprons whilst painting but they do often get glue or pen on their clothes.

We will do our best to teach your child to be careful, but accidents will happen.

Uniform is very expensive so please make sure **all** items are named, including shoes!

Uniform can be ordered online via the Michael Sehgal & Sons website at www.michaelsehgal.co.uk. There is also a link on our school website at www.thomasbewick.ncea.org.uk.

Dressing for the weather

- We spend a lot of our time in the outdoors which is a great place to learn and explore.
- Children need to bring a coat to school everyday, even if the sun is shining.
- School shoes need to be appropriate for all weathers.
- In hotter months please apply sun-cream to your child before school and send them in with a sun hat.
- Please name all jumpers and cardigans as they all look the same.



Reading book bags

Your child will be given a plastic reading folder. Please make sure they bring it to school every day. Alternatively, you may choose to buy a purple book bag.

When your child is ready to read it is really important to hear them read at least 3 times a week and go over their sounds as often as possible.

Please comment and sign in the reading record book so we can see how the children are managing with their reading with you at home.



Backpacks

We have very limited space in the classroom and in the porch and unfortunately we can **NOT** accommodate backpacks.

Please just bring a draw string PE bag and your child's reading folder to school.

Free school meals

Our school is a healthy school!

Every child in Reception is entitled to a free school meal - this is not connected to any benefits. This is worth over £375 to each parent and includes free milk until the term of your child's 5th birthday.

However, if you are in receipt of any of the following:

- Income support
- Income based job seekers allowance
- Child tax credits (not working tax)



Our school could be allocated additional funding to support your child.

It is SO important to us that you apply for free school meals if you think you are entitled. It's really easy to do in September, just go online to:

www.northumberland.gov.uk/Education/Schools/Meals

Packed lunches

We understand that a school meal might not be suitable for every child therefore you have the option to bring a packed lunch. Please remember that you are only feeding one child and we have a limited time in the dining hall.

Please bring the meal in a small bag with your child's name and class clearly marked on it. Lots of children have the same lunch bags.

We do not allow:

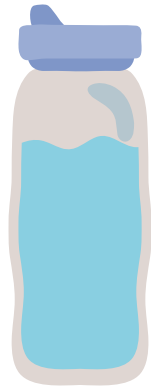
- Sweets
- Fizzy pop
- Chocolate bars (one small chocolate biscuit is allowed)

We try to promote healthy eating in school wherever possible so we would really appreciate your support with this from home.



Other food and drink

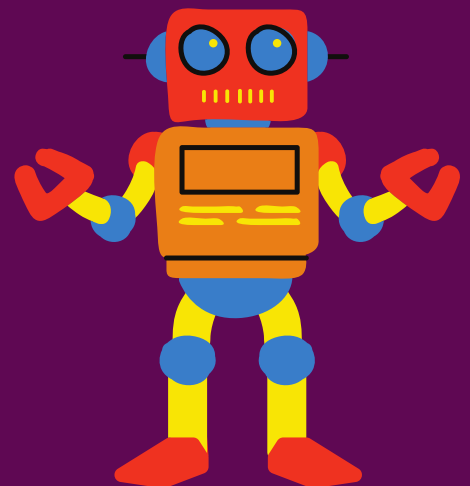
- Fruit is free - All children get one piece of fruit per day
- Milk must be ordered and is free for children under the age of 5
- Please send your child into school every day with a named water bottle - no juice, flavoured water or anything fizzy please!



Toys and jewellery

Please do not bring any toys, games or mobile phones to school.

Children must also not wear any jewellery for safety reasons other than a pair of ear studs (if they so wish) which must be either removed or covered for PE sessions.



Homework

When we start Read Write Inc, your child will be given weekly phonics homework, which will be the letter sounds they are learning to practice at home.

Please read with your child at least 3 times a week, even a few pages makes a huge difference!



The Early Years Curriculum

We are part of the *Early Years Foundation Stage*, which the children begin in Nursery and finish at the end of Reception.

Our learning is made up of seven Prime and Specific areas of learning:

- Personal, social and emotional development
- Communication and language
- Literacy
- Maths
- Understanding the world
- Physical development
- Expressive arts and design



Personal and Social Development

- Making relationships with other people
- Managing own feelings and behaviours
- Going to the toilet and washing hands
- Listening to and following instructions
- Developing self confidence
- Sharing and caring
- Self regulation
- Teamwork



Communication and Language

- Expressing ideas and feelings
- Listening carefully and responding
- Holding a conversation using the correct tenses
- Understanding spoken language and instructions



Physical Development

- Core body strength
- Spatial awareness
- Gross and fine motor skills
- Holding a pencil correctly
- Moving energetically
- Using a range of small equipment including scissors and cutlery



Maths

- Counting to 20 and beyond and having a deep understanding of numbers up to 10
- Recalling number bonds up to 5 and some to 10
- Exploring and representing patterns in numbers
- Comparing quantities - more, fewer and equal amounts

All of our Maths lessons are practical and include fun activities!



Literacy

- Learning sounds for letters in Read Write Inc
- Writing recognisable letters
- Spelling words by sounding out
- Spelling and writing
- Learning to read
- Learning and using new vocabulary
- Re-telling stories



Understanding the World

- People, culture and different communities
- Past and present events
- Explore the natural world and changes



Expressive Arts and Design

- Exploring tools and materials
- Being imaginative and making up stories
- Creating with materials
- Explaining what has been made
- Singing and dancing
- Exploring different movements
- Role play
- Exploring musical instruments



Characteristics of Learning

The areas of Learning and Development of the Early Years Foundation Stage (EYFS) are interconnected with a child's Characteristics of Learning:

- Playing and Exploring
- Active Learning
- Creating and Thinking Critically



Tapestry

- We use 'Tapestry' to share your child's Learning Journeys online.
- You have a username and password to access this and download the app.
- Observations can be seen of your child in school.
- You can send photos/videos and information which will be added to their online journey.
- We always communicate other information on here with things that might be happening in school so you must check it regularly.
- We are a paperless school.
- We are a paperless school and all information and letters will be send via Tapestry.



Working together

How can we work together for the good of your child?

If you are not happy about anything, give us a call, drop us an email or pop in to see us, please do not put it on social media.

Telephone: 01670 812075

Email: admintb@thomasbewick.ncea.org.uk

It's good to talk!

