



Welcome to Reception at

# Grace Darling C of E Primary School

Part of Northumberland Church of England Academy Trust

---

Parent/Carer Guide 2021/22



## A message from the Headteachers

We are looking forward to welcoming your child to our Reception classes at Grace Darling C of E Primary School.



In this booklet you will find some information and some reminders for the new school year. As soon as we can we will invite you into school for a meeting.

We will provide a nurturing, safe, positive, fun and stimulating environment for children to learn through exciting learning opportunities, where all contributions big or small are valued.

### **Together Everyone Achieves More**

We encourage all our children to develop a love of reading!

Our school is a place where everyone can let their light shine!

We hope your child is excited about starting in our Reception!

Please contact us by phone or email if you have any further questions. Tel: 01670 812019.  
Email: [admingd@gracedarling.ncea.org.uk](mailto:admingd@gracedarling.ncea.org.uk).



## Meet the staff



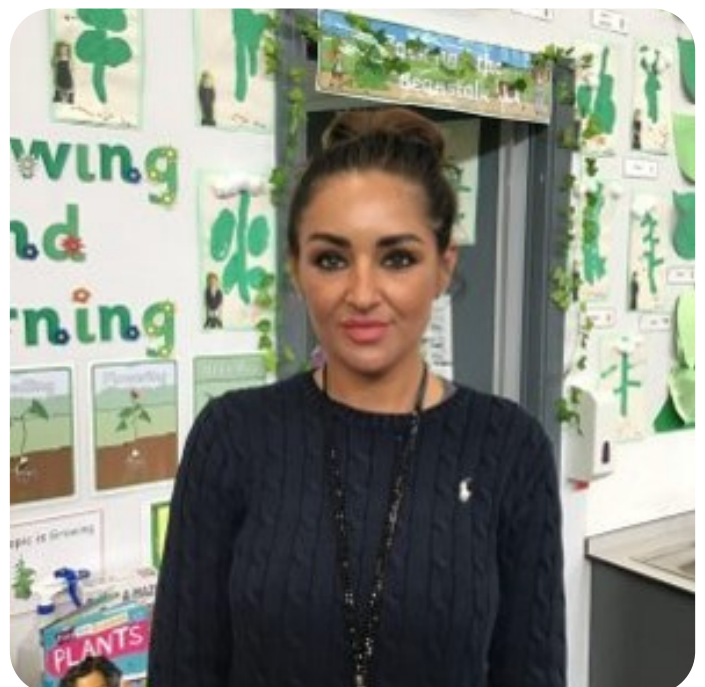
**Mrs White**



**Mrs Diffley**



**Mrs McKinnon**



**Miss Graham**

# The Early Years Foundation Stage (EYFS)

We are part of the *Early Years Foundation Stage*, which the children begin in Nursery and finish at the end of Reception.

Our learning is made up of seven areas of learning within the Development Matters curriculum:

- Personal, social and emotional development
- Communication and language
- Literacy
- Mathematics
- Understanding the world
- Physical development
- Expressive arts and design





# Outdoor Education

- We spend a lot of our time in the outdoors which is a great place to learn and explore.
- We sometimes go on wellie walks.
- Children need to bring a coat to school everyday, even if the sun is shining.
- School shoes need to be appropriate for all weathers.
- We have some spare wellies in school but if a pair of your child's wellies could stay in school this would help. (Please put their name in them).
- In hotter months please apply sun-cream to your child before school and send them in with a sun hat.
- Please name all jumpers and cardigans as they all look the same.



# Tapestry

- We continue to use 'Tapestry' to share your child's Learning Journey online.
- If you are just starting at our school, you will be given a username and password to access this via the app called 'Tapestry'. Please let us know if you have used Tapestry in your child's previous school/nursery setting.
- Observations can be seen of your child in school.
- You can send photos/videos and information which will be added to their online journey.
- It is very secure and only you can see your child's learning journey.
- We often communication other information on here with things that might be happening in school so you can check it regularly.





# Rewards and Sanctions

We use lots of different ways to promote good behaviour within Reception.

We believe in assertive discipline – where good behaviour is rewarded. We use 'good sitting', 'good listening' 'good walking' and 'kind hands'.

## Some of our rewards:

- Visits to other staff
- Behaviour Awards
- Star of the Week
- Rainbow box

## Sanctions:

- Good to be green - step system of behaviour

# Lunches

Under the Universal School Meals funding, your child is entitled to a free school meal from Reception until the end of Year 2. This funding does not extend to free school milk. You may be eligible to register for free school meals. Please contact the school office on 01670 812019 for further information.

Alternatively you can provide your child with a packed lunch but **pleas**make sure it is healthy and remember they only have little tummies..... Please don't send juice with their packed lunch and we recommend only one biscuit or packet of crisps.

## Water, milk and snacks

- Children will be offered a healthy fruit snack at school.
- Milk is paid for in advance before each term unless you are in receipt of free school meals.
- Children should bring a named bottle of fresh water (no juice or pop) every day.
- Please let office staff know if your child has any allergies or dietary needs.



# Reading Packets

- Please purchase a reading folder for your child and make sure they bring it every day.
- You can personalise it by adding a small keyring to the handle and this makes it easier for your child to find it.
- Please hear your child read and go over their words and sounds as often as possible.
- Please comment and sign in the reading record book so we can see what children are reading.
- Please try and read every night as we offer rewards when children read 3 times per week.





# Uniform



We do have a school uniform and it is expected the children will wear it.

Reception can be a creative and therefore a very messy place! We do insist that the children wear aprons whilst painting but they do often get glue or pen on them.

We will do our best to teach your child to be careful, but accidents will happen.

Children are not advised to wear any jewellery in Reception as our play is quite physical.

Uniform can be ordered online via the Michael Sehgal & Sons website at [www.michaelsehgal.co.uk](http://www.michaelsehgal.co.uk). There is also a link on our school website at [www.gracedarling.ncea.org.uk](http://www.gracedarling.ncea.org.uk).

## Children should wear:

- White polo shirt, black trousers or skirt, Bishop's purple sweatshirt or cardigan and black shoes (not trainers)
- A branded track suit is also available for the day your child does PE.
- In the summer, purple checked dresses are also available.
- Your child will also need a purple book bag.

## PE Kits

The children will take part in regular, weekly PE lessons where we will be exploring movement, dance and games skills.

If your child does not have a school branded tracksuit, you will need to provide them with a PE kit consisting of the following:

- a white t-shirt
- black shorts
- black sandshoes
- hoody/joggers

This stays in school for the half-term.

It really helps if you name all of their uniform as we quite often get items of clothes mixed up... A named PE bag is essential if your child is leaving their PE kit at school.





# Checklist

- Name everything.
- PE Kit – to be kept in school for a half-term or come into school on PE day wearing the Grace Darling jogger/hoody set.
- Hear your child read, or share a story with them, as often as possible – we need to work together.
- Arrive on time for school every day.
- Please help them learn to be independent, washing hands, dressing for PE, fastening zips and shoes.
- Sign up for free school meals if entitled.
- If your child is poorly or will not be attending school for any reason, please telephone the school office to let us know. Attending school every day is important and any child with less than 90% attendance will be closely monitored.

**If you have any questions, please send your child's class teacher a message on Tapestry or call the school office on 01670 812019.**

Grace Darling C of E Primary School  
Central Parkway  
Newbiggin-by-the-Sea  
Northumberland  
NE64 6RT

W: [www.gracedarling.ncea.org.uk](http://www.gracedarling.ncea.org.uk)

