



Bishop's Primary School

THOMAS BEWICK CAMPUS NEWSLETTER

May 2021

Dates for your Diary

May 2021

21st May – Outdoor Classroom Day – please can your children wear outdoor clothing on this day – see information in newsletter

28th May – Half term holiday – School closes at the normal times.

June 2021

7th June – Back to school

25th June – Teacher Training Day (school closed)

Trainers

Children are not allowed to wear trainers for school unless it is their PE day and they wear them with their Academy PE kit. Now shops are beginning to reopen, it is important that children return to wearing black shoes for school.

Uniform can be purchased from
www.michaelsehgal.co.uk

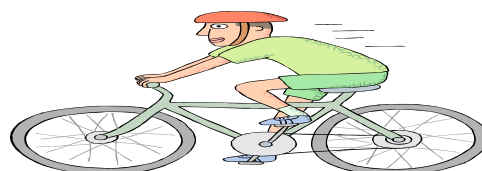
Outdoor Classroom Day

Friday 21st May is Outdoor Classroom Day. The children will be taking part in a range of outdoor learning with their class. Please ensure your child is wearing **suitable outdoor clothes** including trainers or wellies on this day. The children could possibly get muddy so please ensure they are wearing something sensible. We will be going outside whatever the weather! Thank you.

Important Notice!

BIKE SHED

We have had a few reported incidents of scooters going missing. Please remember to take your bikes and scooters home at the end of the day! Bikes & Scooters **are left at the owners risk** and we cannot be held responsible if they are stolen. We highly recommend the use of a bike lock.



Absences

If your child is absent from school for any reason please remember to inform us by **ringing the Main Office on 01670 812075 before registration ends at 9.15am.** Please be aware that it is our policy, if you do not let us know and we cannot get in touch with you, we will ring the emergency contacts for your child or make a home visit.

Thank you in advance for your support.

Bikes/ Scooters

Please ensure that your children do not ride their scooters or bikes in the yard during collection and pick up times. The children must walk their scooter/bike off the school premises before riding. Thank you.

Parents/ Carers on campus

Please can I remind you that if you need to speak to a member of staff that you do so by phoning the campus 01670 812075 and make an over the phone appointment or email admintb@bishops.ncea.org.uk. This is to ensure everyone is kept safe. Thank you for your understanding.

Walk to School Week

In order to support our local community with reducing cars on the road and carbon emissions, we are taking part in Walk to School week. This will take place **Monday 17th May to Friday 21st May.** Those children who walk (skate, scoot, cycle or Park & Stride!) every day are rewarded with a themed WOW badge. **Children are not to ride them in the yard.**



Teacher Training Day

Friday 25th June is a teacher training day. School will be closed to all children on this day.

Back Packs

Since September 2019, we have asked for children not to have back packs in school. They should only come into school with a drawstring bag or a book bag. We do not have the space to facilitate backpacks and they can become a health and safety hazard in the cloakrooms. We appreciate your understanding with this matter.

PARKING



You will have noticed the new markings on the road outside the school and the new traffic calming measures on Moorhouse Lane. Despite this, we continue to receive complaints about the parking outside of school. Please be considerate and park in an appropriate space. Please do not block paths. The police and council have been informed of the complaints. Can we also remind you that the staff carpark is only for staff cars. Thank you.

Entrances/ Exits

Please remember that we have a one way system in place.

Parents, carers and children of **Year 1 – 6** need to enter via the green gates at the top of Moorhouse Lane and exit via the red gates. Parents, carers and children of **Nursery and Reception** enter via the green gates and exit through Reception Yard and out into the car park.

It is still really important that we follow these measures. It is to keep everyone as safe as we can.

Thank you for your continued support,

Jessica Williamson
Head of Campus