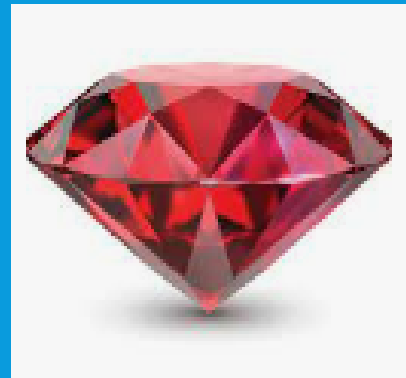




# WELCOME TO THE RUBY CLASS



# OUR VISION: ACHIEVING AND GROWING TOGETHER





# SCHOOL RULES

1. Keep hand, feet and objects to ourselves
2. Use quiet, calm voices (no bad language)
3. Always follow teacher instructions
4. Care for the school environment

In EYFS we use Mr Potato Head to explain our school rules in an age appropriate way.





# ATTENDANCE AND PUNCTUALITY

- School begins at 8.45am for all children
- Breakfast clubs runs from 7.30am if needed
- Children should be at school every day and on time with their school bag and water bottle.  
Please send a change of clothes/nappies if needed
- Good attendance and punctuality sets good habits for the future.

# UNIFORM (PUT IN A PICTURE OF YOUR CHILDREN)



- Smart school uniform sets the tone for a day of learning.

# PE – PHYSICAL EDUCATION (USE YOUR CHILDREN)



- PE is part of the National Curriculum.
- Our PE days are Thursday for Reception..
- We are lucky to have coaches from NUFC!!
- Children are to come in their PE kits for the day.
- Children can wear tracksuit bottoms and jumpers if it is cold.
- Other clothing is **not** allowed.
- (Swimming kit and days / costs)

# WE ARE A READING SCHOOL!

- Our ambition is for every child to read by 7 using a synthetic phonics approach and to develop a love of reading for fluency and comprehension in order to access a broad and balanced curriculum. We do everything to make this happen.



# RWINC – OUR METHOD TO TEACH PHONICS

**Read Write Inc.**

## Reading

- When using RWI to read the children will:
- Learn 44 sounds and the corresponding letter/letter groups using simple prompts
- Learn to read words using sound blending (Fred talk)
- Read lively stories featuring words they have learnt to sound out
- Show that they comprehend the stories by answering 'Find It' and 'Prove It'
- Mrs Lockey is our phonics leader.
- Children **will** read every day in school and **we expect** them to read every day at home and record it in the reading record.

# HOMework

- Homework is Reception:
  - Homework will be added to Tapestry and stuck in a homework book. Please help your children look after these books and bring them back to school each Friday.
  - Homework is often a practical job or a conversation at home where a quick update in the homework book is required. The children choose a library book on a Monday to share with you at home and return on a Friday.
  - Maths – Numbots - more information to follow.
  - It is set on a Monday and 'collected' on a Friday.
  - This sets good habits for moving on in education and the world of work.
  - It is tightly focused on core learning – it helps to build perseverance.
  - Teachers will keep a record of children who complete homework.





# HOW TO FIND OUT MORE

Our school website:



Exciting new-look website!!

[NCEA St Michael's C of E Primary School](https://stmichaels.ncea.org.uk)  
Ask us – we don't bite!

# IF YOU NEED TO TALK TO US...

- We can pass on small pieces of information at the beginning of the day.
- If you would like to talk more in-depth, please make an appointment with the office. We're here to listen and address things as soon as possible.
- We use Tapestry in EYFS. We share updates and essential information. It is imperative you are enrolled and check it regularly. We may ask you to upload photos as part of homework and the children really enjoy sharing these on the board.

[Susan.lockey@stmichaels.ncea.org.uk](mailto:Susan.lockey@stmichaels.ncea.org.uk)

