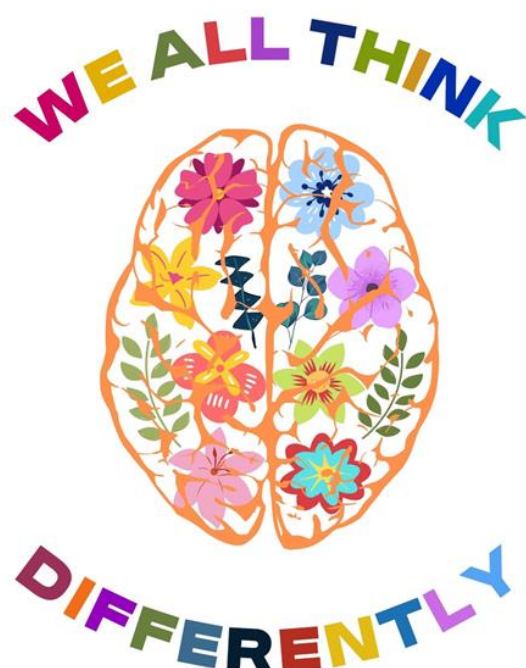


Autism Family Support Drop In Sessions



Come along to access free support and advice in your local area. 0-19 years. No diagnosis needed!

Join us at:

Blyth Central Family Hub - Monday 25th September 11am-3.30pm

Hexham Family Hub - Tuesday 3rd October 11am-3.30pm

Ashington Family Hub - Tuesday 10th October 12pm-5pm

Berwick Family Hub - Thursday 19th October 11am-3.30pm

For more information, please contact Robyn via telephone 07517553426 or via email robyn.mcgregor@northumberland.gov.uk

