

KEY STAGE 4

Curriculum & Options Booklet

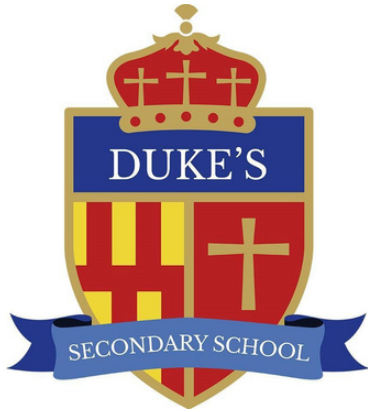
2024





KS4 CHOICES GUIDE

KS4 Options Blocks.....	3
Duke's Key Stage 4 Curriculum.....	4
Duke's Core Offer.....	5
KS4 Science.....	6
Your future beyond school.....	7
What to do next	8
Subject information.....	9



Duke's Secondary School

Josephine Butler Campus,
Academy Road Ashington,
Northumberland NE63 9FZ
Telephone: 01670 816111

admin.dss@dukes.ncea.org.uk

Principal: Mr R Atkinson

February 2024

Dear Parent/Carer

Let your LIGHT shine in Key Stage 4!

Welcome to our KS4 Choices Booklet for students joining Year 10 at Duke's Secondary School in September 2024. The choices made at this stage in your child's education are key to their future and I would encourage you to take the time to read this information and to discuss it at home before making the final decisions that will enable your child to let their light shine!

We are extremely ambitious for each student at Duke's and we know that they all have individual aspirations and hopes for the future. With this in mind, we have developed our options process to give our pupils a wide variety of choice at Key Stage 4 so that they have the best chance to excel and to be prepared for moving into the sixth form and beyond. We have strong aspirations for our students and have developed our Key Stage 4 curriculum to help your child to pursue the very best in further or higher education or work-related apprenticeships and to open as many future opportunities as possible.

This may be the first time that you and your child have had a choice in what your child studies each day at school. This is both exciting and, to some, daunting but the information in this booklet and the conversations that you will have at our Year 9 Parents' Evening, and in options interviews will ensure that you make informed decisions that lead to positive experiences and outcomes for your child.

Duke's Secondary School aims to support you in your choices at this stage, and should you have any questions about the options or the process involved, please contact Miss Ross (Head of Year 9), Mr Taylor (Keystage 4 Lead) or Mr Line (Deputy Principal) on 01670 816 111.

For information, advice and guidance about how your GCSE options can support your child's future, please contact our school Careers Adviser, Miss Cain.

Yours faithfully,

A handwritten signature in black ink, appearing to be 'Mr Line', written in a cursive style.

Mr Line

KS4 OPTIONS BLOCKS



All pupils will study the subjects in this column	Option Block 1	Option Block 2	Option Block 3	
	Open Option (Students should only make a choice from this option block if they have not been told to take Triple Science)	Open Option (All students choose one subject from this column)	Open Option (All students choose one subject from this column)	
GCSE English Literature		GCSE French	GCSE French	EBACC Choices
GCSE English Language		GCSE Geography	GCSE Geography	
GCSE Maths		GCSE History	GCSE History	
GCSE Triple or Dual Science	OCR Health and Social Care	GCSE Art	GCSE Art	Open Choices
CORE PE	BTEC Construction	BTEC Business Enterprise	GCSE Engineering	
CORE PSCHCE	WJEC Hospitality and Catering	GCSE Design and Technology	GCSE PE	
CORE RS or GCSE RS	BTEC Sport	BTEC Construction	BTEC Media Studies	
		Cambridge National ICT	BTEC Travel & Tourism	
		WJEC Hospitality and Catering	BTEC Sport	
		BTEC Performing Arts	OCR Health and Social Care	
			GCSE Music	

All of our students will be taking at least 8 GCSEs as per government guidance. They will all study Maths, English Language, English Literature and either Dual or Triple Science. Students taking Dual Science will take one option from each of the three option blocks while those taking Triple Science will just take choices from Block 2 and 3. Students will be informed of which Science they will be taking prior to the Y9 Parent and Option evening so that they are fully aware of which opinion choices they should take. All students will also complete core studies in RS, PE and PSCHCE.

Should students wish to follow the **Ebacc route then they should choose either History or Geography and French** as two of their choices. Students also have the choice of taking GCSE RS instead of the core RS offer.

Students should only choose one subject from each of the blocks recorded below. Students can not take the same subject more than once. They should also choose a reserve choice for each block which may be used if any of the courses become oversubscribed.

Options Timeline

- Year 9 Parents evening – Wednesday 27th March.
- Optional pupil/parent discussion - Wednesday 15th May.
- Deadline for option forms—Friday 14th May.
- Pupils notified of options choices— June.

** These dates may be subject to change.

DUKE'S KS4 CURRICULUM

Duke's Secondary School provides a broad and balanced curriculum to meet the needs and aspirations of our pupils. Our curriculum is built around a group of core academic subjects, which give the foundation for building a more personalised curriculum of creative and vocational subjects on. Our options blocks give the opportunity for all pupils to achieve the English Baccalaureate (EBacc) should they wish to do so, but we recognise that this is not the most appropriate model for all children. Our curriculum is fundamentally designed to ensure that all pupils achieve a rounded education that prepares them as fully as possible for the next step in their education.

Higher education and the world of work are increasingly competitive. It is important that this options process is taken seriously to ensure that the combination of subjects that your child studies keeps their future options open.

***What is the EBacc?**

The EBacc was introduced into schools in England by the government in the expectation that the majority of children will work towards GCSEs in the five core academic subjects that give the widest range of future further study and career opportunities. These subjects are: English, Mathematics, Science, History **or** Geography, and a language (French).

The curriculum structure at Duke's ensures that those pupils who may enjoy or benefit from studying the EBacc can do so, and therefore meet these government aspirations. However, the EBacc will not serve the needs of all our pupils, and our options blocks also allow pupils to follow a programme of study that involves a broader spectrum of subjects.

***Please note - Students who, in the future, may be considering progressing onto A-Levels and university study or higher apprenticeships should seriously consider taking the EBacc pathway.**

Changes ahead!

Please note that details about courses in this booklet are subject to change. We will do our best to ensure that pupils are able to study their chosen subjects, but there may be sound educational reasons for us to ask you to consider another route, or to make changes to your initial choices. Although we have a wide range of courses on offer, it may not be possible for us to run them all. Decisions about which courses can run and which cannot will be based on numbers of pupils choosing them.

DUKE'S CORE SUBJECTS

Duke's Core Subjects

There are a number of elements of the Key Stage 4 curriculum that are core provision, but do not lead to external accreditation. However, the full programme of study that pupils follow is valuable for their Personal Development, and includes Religious Studies (RS); Personal, Social, Health and Careers Education (PSHCE) and Physical Education (PE). Information about all of these courses can be found below.

Religious Studies

Pupils within a Church of England school have a statutory entitlement to study Religious Studies throughout their school life. At Key Stage 4, we have an exciting and engaging programme of Religious Studies that all pupils will follow. Pupils may opt for the GCSE Religious Studies or the Core RS curriculum which does not lead to a formal qualification but which mirrors the GCSE programme in providing a thorough understanding of the religious and ethical issues that affect the society in which we live.

Personal, Social, Health and Careers Education (PSHE)

Our PSHE programme is designed to help our young people make informed choices to support them to take a confident place in society. It contains elements from the statutory RSHE (relationship, sex and health education) curriculum and allows for reflection, discussion and collaboration. Topics include: Preparing for your Future; Politics; Relationships and Sex Education; Future Finances; and Health and Support.

PE

This is a core PE provision taken by all students and does not lead to a formal qualification. Students are able to opt for additional GCSE PE or BTEC Sport as an optional subject and information about these choices are to be found elsewhere in this booklet. Core PE focusses on giving our students access to try a wide range of sporting activities.

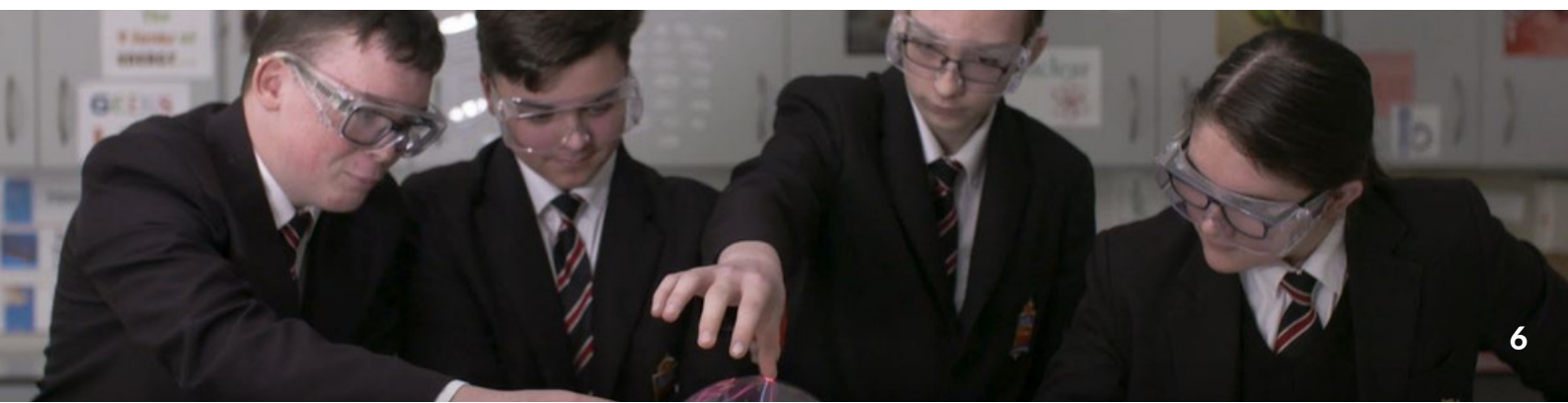
KS4 SCIENCE AT DUKE'S

Studying Science at Key Stage 4

All pupils study science at Key Stage 4. The preparation work undertaken at Key Stage 3 prepares all pupils to be ready to move into their new science curriculum in Year 10.

For this year we have slightly changed our science pathway to better suit the needs of all of our pupils. In previous years all of our pupils have taken Triple Science which focuses on the teaching of the 3 individual disciplines of Biology, Chemistry and Physics and leads to the award of 3 individual GCSE grades. For the majority of our students this is still the right pathway to follow as it supports progression onto specific Science, Technology, Maths and Engineering (STEM) based further education, higher education, apprenticeship or employment based destinations. For some of our students however, the study of all 3 Sciences may be too in depth and the taking of an additional GCSE option may be more appropriate. In this case students will study Dual Award Science which still covers aspects of all 3 individual sciences but in a reduced amount of curriculum time. The Dual qualification will lead to the award of 2 GCSEs and will still allow students to progress onto STEM based destinations should that be their preference.

Students taking Dual Award Science will take an additional GCSE option in option block1. Students will be informed about which pathway will suit them best prior to the Year 9 Parents' and Options evening.



YOUR FUTURE BEYOND SCHOOL

What do employers say about young people and jobs?

The three most important factors employers weigh up when recruiting school and college leavers are:

1. Literacy and numeracy (70% of employers)
2. Broader skills ie listening, presenting and problem solving (60% of employers)
3. Academic results and qualifications (50% of employers)

This does not mean qualifications are not important, just that everybody has them so you need to offer something else to employers.

Other 'essential capabilities' employers want young people to have are aptitude and readiness for work, work experience, digital and IT skills.(CBI/Pearson 2018:28,000 organisations surveyed)

How does this affect me?

The world of work is changing rapidly with more part time jobs, short term contracts and people changing jobs far more often. This means people need 'career management skills' to ensure they make the right decisions along the way. You must consider your options carefully as you progress through Years 10 and 11 and follow the learning route that is right for you (not your friends!) You also need to think beyond your qualifications: how can you use your evenings, weekends and holiday time to develop the skills and experience that todays employers want from you?

Where can I start?

In addition to your teachers, tutors and head of Year, you are also able to see the school Careers Adviser whenever you would like to discuss you potential career path. Parents and carers are welcome to attend the appointments which can be arranged through Miss Cain and Mrs Towers.

A quick guide to four "Areas of Opportunity" in the North East:

- Health and Life Sciences (eg medical research, genetics, effects of ageing)
- Manufacturing (eg producing cars, battery technology, pharmaceuticals)
- Digital and Software (eg computer games, cloud technology, cybersecurity, robots)
- Energy (eg offshore and onshore wind turbines, solar, biomass, subsea technology)

Useful web pages

- **Unifrog.org** - Compare University courses, Apprenticeships and Higher Education courses
- **National Careers Service** - Get information and advice on post-16 options.
- **National Apprenticeship Service** - Up to date information about apprenticeships including vacancies and how to apply.
- **Informed Choices** - Advice from the Russell Group on how A Level choices can affect university entry.
- **UCAS** - Information and entry requirements for higher education/university courses in the UK.
- **Prospects** - Advice and guidance on careers, careers quizzes and where A level and degree subjects can take you.

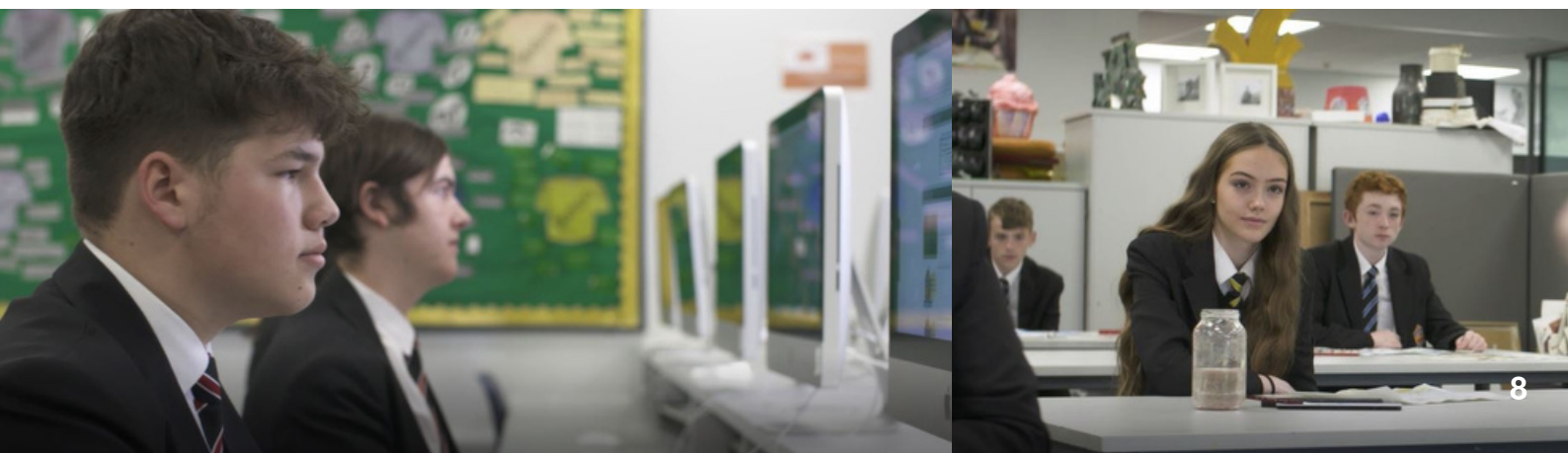
WHAT TO DO NEXT?

Do:

- Read this choices booklet carefully and consider courses you may wish to study in Years 10 and 11
- Choose courses you know you will enjoy.
- Choose courses you are interested in.
- Talk to individual subject teachers at the Choices Evening.
- Ask the advice of your subject teachers and your tutor.
- Discuss this with your parent or carer.
- Think very carefully about the subjects you choose. It is very difficult to change course once you have started.

Don't:

- Make your decisions hastily.
- Choose a course because your friends have.
- Choose a course because you think it might be easy.
- Drop any subject that you may wish to study after Year 11.
- Allow either like or dislike of a particular teacher to influence your choices.
- Drop any subject that you may require for entry to a particular career or further study you are interested in.



GCSE ART

The course

The emphasis in this course is learning by doing, so you'll be able to create imaginative personal work. In the first Year you will produce a portfolio of coursework. In the second Year you will be able to continue with a chosen area of study and create more in-depth coursework and you will be given an externally-set assignment to create ideas in response to one of the eight exciting starting points you will be given.

How will I be assessed?

- **Unit 1:** Portfolio of Work - 60%
- **Unit 2:** Externally Set Task 40%

You will be assessed against four assessment objectives:

- **AO1:** Developing their ideas through investigations informed by contextual and other sources demonstrating analytical and cultural understanding.
- **AO2:** Refine their ideas through experimenting and selecting appropriate resources, media, materials, techniques and processes.
- **AO3:** Record ideas, observations and insights relevant to their intentions in visual and/or other forms.
- **AO4:** Present a personal, informed and meaningful response demonstrating analytical and critical understanding, realising intentions and where appropriate, making connections between visual, written, oral or other elements.

What higher education and career opportunities will this qualification give me?

Students can go on to study Art further at Duke's Sixth Form or college. This can then lead to higher education at university. Job opportunities include: graphic designer, gallery curator, art valuer, illustrator, typographer, fashion designer, photographer and advertising executive, plus many more.

Who to see for more information

Ms Gatti or any member of the Art Department.

GCSE BIOLOGY



The course

Biology will help you to build up your problem solving, research, and analytical skills. These skills will help you test out new ideas as well as question and investigate other people's theories. Over the whole course you will cover six teaching units with B7 and B8 taught within these modules:

- **B1** - You and your genes
- **B2** - Keeping healthy
- **B3** - Food and ecosystems
- **B4** - Using food and controlling growth
- **B5** - The human body
- **B6** - Life on earth
- **B7** - Ideas about science
- **B8** - Practical skills

How will I be assessed?

The course has a terminal assessment at the end of Year 11 consisting of two examinations: Breadth in Biology and Depth in Biology. You will also be continually assessed over the life of the course with closed and open book tests based on the teaching units as well as a synopsis of prior learning. Regular homework will be provided online.

What higher education and career opportunities will this qualification give me?

GCSE Biology provides access to the level 3 Applied Science course in Duke's Sixth Form or further study at A Level. Biology is also a key subject for lots of STEM (**S**cience, **T**echnology, **E**ngineering and **M**aths) careers, particularly in healthcare, medicine and jobs involving plants or animals. This also includes: nursing, dentistry, forensic science, psychology, physiotherapy, botany, environmental science, zoology, geology, oceanography, pharmaceuticals, energy, teaching, science writing, genetics and research.

Who to see for more information

Miss Fletcher or one of the Science Team.

BTEC TECH AWARD IN ENTERPRISE

The Course

This course allows you to gain knowledge of the world of Business and Enterprise. It allows you to acquire knowledge and skills through vocational contexts by studying the behaviours and skills related to an enterprise idea as part of your Key Stage 4 learning. Over the course there are three components:

- Exploring Enterprises.
- Planning and Presenting a MicroEnterprise idea.
- Marketing and Finance for Enterprise.

How will I be assessed?

Components 1 and 2 are assessed through non-exam internal assessment. Internal assessment for these components has been designed to test knowledge through a number of tasks which include realistic activities. There is one external assessment (exam), which provides the main synoptic assessment for the qualification. Component 3 builds directly on components 1 and 2, and enables learning to be brought together and applied to realistic contexts. Marketing and Finance for enterprise requires you to analyse and interpret information in relation to an enterprise and to make recommendations on strategies to use to improve the performance of the enterprise.

What higher education and career opportunities will this qualification give me?

The qualification allows access to Level 3 qualifications at Duke's Sixth Form or at college, as well as apprenticeships, employment or running your own enterprises. The employment opportunities are too vast to mention as this course will assist with any career be that customer service, accounting, retail, administration, construction, health care etc) as all sectors are run as a business.

Who to see for more information

Mrs Barker or Mr Hart.

GCSE CHEMISTRY



The course

Chemistry will help you to build up your problem solving, research, and analytical skills. With these skills you'll be able to test out new ideas as well as question and investigate other people's theories. Over the whole course you will cover six teaching units with C7 and C8 taught within these modules:

- **C1** - Air and water
- **C2** - Chemical patterns
- **C3** - Chemicals of the natural environment
- **C4** - Material choices
- **C5** - Chemical analysis
- **C6** - Making useful chemicals
- **C7** - Ideas about science
- **C8** - Practical Skills

How will I be assessed?

The course has a terminal assessment at the end of Year 11 consisting of two examinations Breadth in Chemistry and Depth in Chemistry. You will also be continually assessed over the life of the course with closed and open book tests based on the teaching units as well as a synopsis of prior learning. Regular homework will be provided online.

What higher education and career opportunities will this qualification give me?

GCSE Chemistry provides access to the level 3 Applied Science course in Duke's Sixth Form or further study at A Level. Chemistry is also a key subject for lots of STEM (**S**cience, **T**echnology, **E**ngineering and **M**aths) careers, particularly medicine, dentistry and veterinary medicine. A chemistry qualification opens doors to all sorts of jobs. The food we eat, the clothes we wear and the technology we use all depend on chemistry. Chemists develop new medicines, safeguard our food supply and monitor and protect our environment. Career opportunities could include; chemist, doctor, pharmacist, nurse, chemical engineer, biomedical scientist and veterinary technician, plus many more.

Who to see for more information

Miss Fletcher or one of the Science Team.

DUAL SCIENCE



The course

This course incorporates all three sciences and broadly follows the single sciences with all of the same modules from these three subjects. The sciences will help you to build up your problem solving, research and analytical skills. With these skills you'll be able to test out new ideas as well as question and investigate other people's theories. Over the whole course you will cover six teaching units with C7 and C8 taught within these modules:

B1 - You and your genes
B2 - Keeping healthy
B3 - Food and ecosystems
B4 - Using food and controlling growth
B5 - The human body
B6 - Life on earth
B7 - Ideas about science
B8 - Practical Skills

C1 - Air and water
C2 - Chemical patterns
C3 - Chemicals - natural environment
C4 - Material choices
C5 - Chemical analysis
C6 - Making useful chemicals
C7 - Ideas about science
C8 - Practical Skills

P1 - Radiation and waves
P2 - Sustainable energy
P3 - Electric circuits
P4 - Explaining motion
P5 - Radioactive materials
P6 - Matter, models & explanations
P7 - Ideas about science
P8 - Practical Skills

How will I be assessed?

The course has a terminal assessment at the end of Year 11 consisting of four examinations: Breadth in Chemistry, Biology and Physics and a synoptic science paper. You will also be continually assessed over the life of the course with closed and open book tests based on the teaching units as well as a synopsis of prior learning.

What higher education and career opportunities will this qualification give me?

GCSE Dual award in Science provides access to the level 3 Applied Science course in Duke's Sixth Form or further study at A Level. Chemistry, Biology or Physics. It is also a key subject for lots of STEM (**S**cience, **T**echnology, **E**ngineering and **M**aths) careers, particularly medicine, dentistry and veterinary medicine. A science qualification opens doors to all sorts of jobs. The food we eat, the clothes we wear and the technology we use all depend on science. Career opportunities could include; chemist, doctor, pharmacist, nurse, chemical engineer, biomedical scientist and veterinary technician, plus many more.

Who to see for more information

Miss Fletcher or one of the Science Team.



BTEC CONSTRUCTION AND THE BUILT ENVIRONMENT

The course

This course gives you the opportunity to gain a broad knowledge and understanding of the construction industry.

How will I be assessed?

You will study three units:

Two of the units studied are internal assessments and there is one external assessment

- **Unit 1 - Construction Technology** – This unit is assessed externally via exam. You can have two attempts throughout the course duration at specified windows.
- **Unit 2 - Construction in Practice** – This unit is assessed internally by evaluating a specific work piece produced by the learner in a safe workshop environment.
- **Unit 3 - Construction and Design** - This unit is assessed internally by evaluating a range of drawings and documents produced by the learner.

What higher education and career opportunities will this qualification give me?

The course is designed to prepare you to undertake further study at Level 3 or to enter directly into an apprenticeship. Alternatively it supports a broad range of careers in the Construction Industry as well as developing your employability skills. Possible careers are Construction Management, Quantity Surveyor, Joinery, Plumbing, Brickwork, Electrical or Painting and Decorating to name a few.

Who to see for more information

Mr Tarling or Mrs Barker

This course may be subject to change!

GCSE DESIGN AND TECHNOLOGY



The course

This qualification is suitable for learners who wish to develop further skills and knowledge in Design and Technology through a variety of materials, but with a particular focus on Textiles and Paper and Boards. Students who enjoy experimentation, developing ideas, problem solving and hands-on creativity would enjoy this course.

The course seeks to prepare students to participate confidently and successfully in an increasingly technological world. Students become aware of, and learn from, wider influences on design and technology, including historical, social/cultural, environmental and economic factors.

This qualification is suitable for all learners.

It is an engaging qualification where learners select a Contextual Challenge and develop their own Design Brief, creating a portfolio of work, demonstrating their design process and resulting in the creation of their final product. This forms half of the GCSE award.

Students will also demonstrate their knowledge of the core content and either Textiles or Paper and Boards through a written exam. This forms second half of the GCSE award.

How will I be assessed?

- Written examination: 1 hour and 45 minutes - 50% of the qualification (100 marks)
- Non-examined assessment portfolio - 50% of the qualification (100 marks)
- This will be a design portfolio and practical outcome focused on either Textiles or Paper and Boards.

What higher education and career opportunities will this qualification give me?

This course is designed to prepare you to undertake further study at AS or A level Design and Technology, National Diploma in a related subject or enter directly into an apprenticeship. Design and Technology allows clear progression of knowledge, understanding and design/ making skills which can be applied to careers in fashion, textile printing, interior design, web design, computer games design, civil engineering, plus many more.

Who to see for more information

Mrs Clark or Mrs Walker.



GCSE ENGINEERING

The course

This course is designed to be an entry point into a wide variety of engineering disciplines and focuses on the development of advanced technical and problem solving skills. Students studying this option will analyse and evaluate a range of engineering processes and will need to apply them creatively in a number of practical tasks. The course is broken down into three components:

- **Component 1 - Exploring engineering sectors and design applications:** Study different engineering sectors, how they fit together and use computer software and tools to design and create your own solutions to engineering problems.
- **Component 2 - Investigating an engineering project:** Look at the different materials, components and processes used to manufacture products, learn assembly and disassembly techniques and use this information to plan and make engineering components.
- **Component 3 - Responding to an engineering brief:** Two assessments under exam conditions. The first assessment is two hours long and involves completing a practical experiment, collecting and analysing data. The second part is an hour and a half long written assessment where students are tested on their ability to solve engineering problems and analyse, evaluate and correct technical drawings and manufacturing processes.

How will I be assessed?

Components 1 and 2 are internally assessed and account for 60% of the final grade. Component 3 is assessed externally and accounts for the remaining 40%. All components involve performing practical tasks, gathering, analysing and evaluating evidence, solving problems and assessment of written work.

What higher education and career opportunities will this qualification give me?

GCSE Engineering provides access to the Cambridge Technical level engineering course in Duke's Sixth Form. This course is ideal for anyone who is interested in studying any engineering discipline including mechanical, electrical/electronic and engineering design post 16 and at university. This is a technical course covering a variety of skills which are not covered in other subjects and which are highly valued by employers in any sector. Future career options could include; aerospace engineer, aviation inspector, rail engineer, motor sport engineer, vehicle engineer household electronics engineer and agricultural engineer, plus many more.

Who to see for more information

Mr Wandless or Mrs Hart.

GCSE ENGLISH LANGUAGE

The course

English Language is part of your core Key Stage 4 programme of study, meaning that all pupils will study this subject. This course builds on the reading and writing skills taught at Key Stage 3, focusing on a variety of fiction and non-fiction extracts. The final exam is at the end of Year 11.

How will I be assessed?

Two written exams. Paper one assesses the understanding and analysis of fiction texts, alongside descriptive or narrative writing skills. Paper two compares a modern text with a 19th century text, focusing on how the writer's viewpoints and perspectives are presented, followed by a non-fiction writing task.

There is also a non-examined assessment for Spoken Language. This is a separate endorsement and doesn't contribute to the overall grade for English Language. Instead, students will receive a pass, merit, distinction grade. The assessment is a short speech, followed by a short discussion. It will be assessed by a teacher from the English Department.

What higher education and career opportunities will this qualification give me?

This qualification is required by virtually every further and higher education course and the majority of employers look for this as one of the basic skills required to be successful. This qualification can be used for a variety of career paths including teaching, journalism, and speech and language therapy.

Who to see for more information

Mrs Wardle.

GCSE ENGLISH LITERATURE



The course

English Literature is part of your core Key Stage 4 programme of study, meaning that all pupils will study this subject. This course builds on the topics, skills and knowledge studied across Key Stage 3. You will study power and conflict poetry, 19th century prose, modern drama and a Shakespeare text. The final exam will take place in Year 11.

How will I be assessed?

Two written exams:

- Paper One includes one Shakespeare question, followed by one 19th Century Prose question;
- Paper Two includes a question on the modern drama text you study, followed by two questions covering Poetry.

These exams assess understanding of these texts, characters and themes, as well as the context surrounding the time they were written.

What higher education and career opportunities will this qualification give me?

This qualification is part of your English development, which is key to success in virtually every further and higher education course or job. This qualification can be used for a variety of career paths including author, publisher, librarian, script editor and marketing executive.

Who to see for more information

Mrs Wardle.

GCSE FRENCH



The course

Pupils study 6 thematic units over the 2 years: My personal world, Lifestyle and wellbeing , My neighbourhood, Media and technology, Studying and my future and Travel and tourism. The themes allow you to learn more about the French speaking world whilst developing your linguistic skills. The Pearson GCSE French course is divided into four key skills areas: speaking, listening, reading and writing.

How will I be assessed?

At the end of the course pupils will complete four separate examinations: listening, reading, speaking and writing. Each paper is worth 25% of your final grade. The final speaking examination will be a 1:1 with your teacher, however, you will be assessed throughout the two Years both individually and in groups.

What higher education and career opportunities will this qualification give me?

A GCSE in modern foreign languages is an academic subject which, along with Geography and History, counts towards the English Baccalaureate. With competition for university places at an all time high, many courses are asking that applicants have a GCSE in MFL which could be a factor in your gaining a place on your preferred course. Today's global economy means that businesses and corporations all over the world are keen to recruit people with language skills. Young people with language skills are finding opportunities in industries such as tourism, government, marketing, IT, journalism, engineering and the financial services.

Who to see for more information

Miss Opstad.

GCSE GEOGRAPHY



The course

In Year 10 we study three physical geography units; The challenge of natural hazards, The living world and Physical landscapes. The content of these units range from looking at how hurricanes form, to the diversity of life in the rainforest.

The Year 11 content is based around human geography and the three units are: urban issues and challenges, the changing economic world and the challenge of resource management. These topics cover how cities change over time, why industry has 'gone global' and why access to food, water and energy is not equal.

In addition to this, we look at key fieldwork skills, which can be applied to a number of other subject areas. There are two fieldwork opportunities: one to the River Wansbeck, and one to Newcastle city centre. These underpin the fieldwork and geographical skills unit.

How will I be assessed?

Three exams will be taken at the end of Year 11. Unit 1 and 2 (the physical and human geography papers) are both worth 35%. The skills paper makes up the final 30%.

What higher education and career opportunities will this qualification give me?

A GCSE in Geography, along with French and History, counts towards the English Baccalaureate. Geography can be studied further at A Level or university. Geography prepares students so well for future careers that there is no such thing as a geographical job but simply jobs that geographers do. Geography graduates are less likely to be unemployed than any other subject, demonstrating how useful the skills and knowledge are in preparation for the world of work. Jobs could include; facilities manager, surveyor, hydrologist, travel guide, cartographer, town planning, geoscientist, meteorologist plus many more.

Who to see for more information

Mrs Carter or one of the Geography Team.

OCR NATIONAL HEALTH AND SOCIAL CARE



The course

Over the two Year course you will study three units. Two of these are core units and internally assessed, the third is an externally set exam. You will learn aspects of health and social care including healthy living, human development, and effective communication. It can be quite an interactive course which also allows you to develop your practical skills. It can also help you to make decisions about career pathways you may wish to consider in the health and social care sector.

How will I be assessed?

This is a new specification which now has a controlled assessment weighted at 40%, and two internally assessed pieces of coursework which are each weighted at 30% of the course.

What higher education and career opportunities will this qualification give me?

Health and social care can be studied in Duke's Sixth Form as well as at college, university and during apprenticeships. It has many links with biology as well as sociology and psychology where human development is studied. Careers linked to this subject include social work, nursing, police force, ambulance services and childcare worker.

Who to see for more information

Ms Fear.



GCSE HISTORY

The course

In History, you will learn over a thousand Years worth of history covering a range of topics, concepts, people and locations while learning all of the essential historical skills. We study four historical periods:

- **Paper 1:** Medicine in Britain 1250-present with surgery and treatment on the Western Front 1914-18, which studies change over time, significance and source analysis skills.
- **Paper 2:** Superpower relations and the Cold War, 1941-1991 with Early Elizabethan England, 1558-88 which studies cause and consequence skills.
- **Paper 3:** The USA 1945-75, Home and abroad: Civil Rights in the USA and the Vietnam War which studies source analysis and interpretations skills.

How will I be assessed?

All papers are examined at the end of Year 11 by the Edexcel exam board: Paper 1 is worth 30%, Paper 2 is worth 40% and Paper 3 is worth 30%.

What higher education and career opportunities will this qualification give me?

A GCSE in History, along with Geography and French, counts towards the English Baccalaureate. A great number of our learners continue to take History at A level and university. History is an academic subject which provides an excellent step into a career that requires problem solving skills, good written and oral skills and detecting and analysing evidence. Many careers welcome the trained mind that history qualifications encourage such as Law based professions, research careers, the police force and teaching.

Who to see for more information

Miss Willett or Mr Kelly.

WJEC Hospitality & Catering



The course

The hospitality and catering sector includes all businesses that provide food, beverages and/or accommodation services. This includes restaurants, hotels, pubs and bars. It also includes airlines, tourist attractions, hospitals and sports venues; businesses where hospitality and catering is not their primary service but is increasingly important to their success.

According to the British Hospitality Association, hospitality and catering is Britain's fourth largest industry and accounts for around 10% of the total workforce. Since 2010, over 25% of all new jobs have been within the hospitality and catering sector with the majority of new roles falling within the 18-24 age group.

How will I be assessed?

The WJEC Level 1/2 Vocational Award in Hospitality and Catering is made up of two mandatory units:

- **Unit 1:** The Hospitality and Catering Industry
- **Unit 2:** Hospitality and Catering in Action

Pupils will complete both units.

What higher education and career opportunities will this qualification give me?

Successful completion of this qualification can support further level 3 study in hospitality at Duke's Sixth Form as well as prepare students for further education or apprenticeships. The career options are wide ranging and could include; catering manager, chef, food scientist, hotel manager, events planner, restaurant manager or barista, plus many more.

Who to see for more information

Mrs Shinkfield.

Cambridge Nationals IT level 1/2



The course

Our Cambridge National in IT will inspire and equip students with the confidence to use skills that are relevant to the IT sector and more widely. It covers: the use of IT in the digital world, internet of everything, data manipulation, human-computer interface (HCI) and augmented reality. This course will cover the key concepts of computing, its practical applications and their use in the workplace and society. Over the two Year course you will study core IT applications which are used in many businesses around the world. These include coursework units on spreadsheets and augmented reality.

How will I be assessed?

This will be a combination of one exam and 2 units of coursework. The exam is weighted at 40% and each unit of coursework is worth 30% each.

What higher education and career opportunities will this qualification give me?

Many jobs in business and commerce require basic IT competence. This qualification will allow you to meet the needs of both employers and further educational establishments. Some of the jobs that include ICT are:

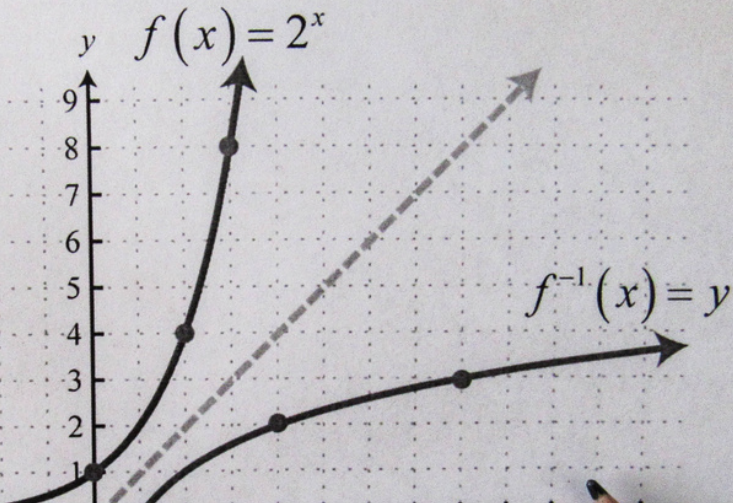
- **Engineer** - to solve physical problems such as how to build a bridge or design an airplane.
- **Business owner** - to calculate cost, revenue and margin of profit.
- **Video Game Developer** - computers are used in every single activity.
- **Desktop Publisher** - they are responsible for combining printed material to prepare publications.
- **Nursing** - computers are used to analyse patient information.

And many more....

Who to see for more information

Miss Hart or a member of the ICT Team.

GCSE Maths



The course

Mathematics is part of your core Key Stage 4 programme of study, meaning that all pupils will study this subject. In mathematics, students will follow individual pathways covering the new AQA syllabus to enable them to make the best possible progress and to achieve their target grades at the end of Year 11. This course will provide a broad curriculum which will meet and challenge the aptitudes and abilities of each learner. Each pathway will concentrate on the mathematical knowledge and applications which are most accessible and relevant. The range of Maths is broad but the content is organised into the following areas: Number; Algebra; Ratio, Proportion and rates of change; Geometry and Measures; Statistics; Probability.

How will I be assessed?

The scheme of assessment is linear, with three question papers to be taken at the end of Year 11, two of them calculator papers. There is a big focus on logical thinking, application of knowledge and problem solving.

What higher education and career opportunities will this qualification give me?

Maths can take you almost anywhere! From computer game design to economics and accounting, via engineering, internet security and software development. Employers look for young people who can think logically, solve problems and make well thought out decisions; all skills learned studying Maths.

Who to see for more information

Mr Butler or any of the Maths teaching staff.

BTEC CREATIVE MEDIA PRODUCTION



The course

The course mixes theory with practical digital media production skills. You will also learn essential skills in planning, research and critical thinking. You will study:

- Component 1: Media products and audiences (Video Games, Film and Video, Print Production) research and analysis
- Component 2: Media Production skills, practical skills in making a media product
- Component 3: Research techniques, understanding the client, pitching, making a media product.

How will I be assessed?

The Pearson BTEC Level 1 / 2 Tech Award in Creative Media Production includes one externally assessed component (exam). The remaining two components are internally assessed coursework. Internal assessment enables you to receive feedback on your progress throughout the course as you gather and provide evidence towards meeting the component assessment criteria.

What higher education and career opportunities will this qualification give me?

Successful completion of this qualification can support further level 3 study in creative media at Duke's Sixth Form as well as prepare students for further education or apprenticeships. The career options are wide ranging and could include: media communications, digital marketing, broadcast journalist, public relations, TV presenter, sound technician, plus many more.

Who to see for more information

Mr Simpson.

The course

During the two Year Eduqas GCSE course, your learning is split into three components: Performance, Composition and Appraisal. There are two set works to analyse and four main areas of study. These areas of study form the basis of the whole course:

- **AoS1** - Musical Forms and Devices
- **AoS2** - Music for Ensemble
- **AoS3** - Film Music
- **AoS4** - Popular Music

How will I be assessed?

- **Component 1** - Performing (30% of the qualification) - Students need to perform a minimum of two pieces, one of which must be an ensemble performance of at least one minute duration. The other pieces may be either solo and / or ensemble. One of the pieces performed must link to an area of study of the learner's choice. The total duration for performance must be between 4 and 6 minutes. This component is internally assessed and is externally moderated.
- **Component 2** - Composition (30% of the qualification) - Students need to complete two compositions, one of which must be in response to an externally set brief. The second composition is a free composition for which learners set their own brief. The total duration of the compositions must be between 3 and 6 minutes. This component is internally assessed and is externally moderated.
- **Component 3** - Appraising (40% of the qualification) - This component is assessed via a listening examination. There are eight questions in total, two on each of the four areas of study. Two of the eight questions are based on extracts set by the examination board.

What higher education and career opportunities will this qualification give me?

Students who study GCSE Music are viewed as creative, confident and successful people who are highly sought after for jobs ranging in a variety of career paths; both within the music industry and beyond it. Opting for Music GCSE at KS4 provides you with a good progression route to more advanced qualifications at KS5 including BTEC L3 Performing Arts; BTEC L3 Music. Beyond KS5 you can then study at Degree level, any Music related subject such as BA (Hons) Music, BSc (Hons) Sound Engineering, BA (Hons) Music Journalism and BSc (Hons) Music for Film Television and Games in addition to a whole host more. Career opportunities could include; actor, session musician, music producer, mix engineer, conductor, music therapist, plus many more.

Who to see for more information

Mr Thompson or Mr Fender.



BTEC PERFORMING ARTS

The course

In Performing Arts you will learn to apply knowledge and understanding when making, performing and responding to drama. You will develop a range of theatrical skills and apply them to create performance and then reflect on, and evaluate, your own work and that of others.

How will I be assessed?

- **Component 1:** Exploring the Performing Arts internally assessed and worth 30%
- **Component 2:** Developing Skills and Techniques in the Performing Arts internally assessed assignments worth 30%
- **Component 3:** Performing to a brief externally assessed task worth 40% of the total course.

What higher education and career opportunities will this qualification give me?

This specification ensures continuity for students progressing from Level 1/2 BTEC to Level 3 BTEC qualifications which we offer at Duke's Sixth Form. Students who go on to Level 3 are already familiar with the working practices established at Level 2 and will build on these, developing a deeper understanding of the Performing Arts Industry. Career opportunities are wide and varied and these can include actor, theatre director, dance movement therapist, choreographer, set designer, theatre producer, scriptwriter and lighting technician, plus many more.

Who to see for more information

Mr Waterston.



The course

PSHCE is part of your core Key Stage 4 programme of study, meaning that all pupils will study this subject. Pupils have one lesson per fortnight of PSHCE. The emphasis of this course is to develop the knowledge, skills and attributes that students need to keep themselves healthy and safe, and prepare for life and work in modern Britain.

Students should develop skills and attributes such as resilience, self-esteem and risk-management. Citizenship provides students with knowledge, skills and understanding to prepare them to play a full and active part in society. They will build an awareness in understanding of democracy, government and how laws are made and upheld. Students will explore political and social issues critically, weigh up evidence and debate to make reasoned arguments.

PSHCE is based around three core themes: health and wellbeing, relationships and living in the wider world (including economic well-being and aspects of careers education).

How will I be assessed?

This is not an assessed subject, however students will be expected to make progress within topics that could last for one lesson or span over a period four.

What higher education and career opportunities will this qualification give me?

Students can talk about the skills that they gain and give examples of working in groups within the lesson especially around some tricky scenarios. Employers and people from higher education will know that citizenship is designed to prepare students to take their place in society as responsible citizens and support them when moving into the world of work.

Who to see for more information

Mrs Freeman.

CORE PE



The course

PE is part of your core programme of study during KS4, which means that all pupils follow this course.

During PE in Year 10 you will further develop your knowledge and skills in a range of different sports. Some of those sports will have been introduced to you during Key Stage 3, others will be different. In Year 11 we move to an option process where you can choose from a set selection of activities, which you would like to participate in.

How will I be assessed?

You will be assessed in each of the sports that you take part in, where you will be given advice on what you need to do to further improve your knowledge, understanding and performance.

What higher education and career opportunities will this qualification give me?

Studying core PE will give you an insight into what potential career opportunities are available in the sporting community. We discuss recent development of sports provision in the local area, and also give advice on where you could go to participate externally in competitive sports or fitness provision. For further information and job ideas Please see [Jobs in sport](#) | [UK Sport](#) The transferable skills such as; teamwork, leadership, communication and problem solving, gained from core PE can be applied to all career sectors.

Who to see for more information

Mr Hunter or any member of the PE staff.

GCSE PHYSICAL EDUCATION



The course

Through a variety of classroom based and practical sessions, students will:

- Develop knowledge and understanding of the factors that underpin physical activity and sport to improve performance
- Understand how the physiological and psychological state affects performance
- Perform effectively in different physical activities by developing skills and techniques
- Develop ability to analyse and evaluate to improve performance
- Understand key socio-cultural influences which affect people's involvement

How will I be assessed?

The GCSE course is assessed over four components.

- **Paper 1 - Units 1 & 2:** Applied Anatomy and Physiology & Physical Training. Externally assessed through a written examination paper of 1 hour. This will contribute a maximum of 30% towards your total mark.
- **Paper 2 - Units 3,4 & 5:** Socio-cultural influences, sport psychology and health fitness and well-being. This will be externally assessed through a written examination paper of 1 hour. This will contribute to 30% towards your total mark.
- **Component 3:** Practical activity assessment. Choice of 3 sports: either two individual and one team or two team and one individual. This will equate to 30% of the final grade.
- **Component 4:** Evaluating and Analysing Performance (AEP) in one of the chosen activities and will include planning, performing and evaluating. This will contribute a maximum of 10% towards your total mark.

What higher education and career opportunities will this qualification give me?

Successful completion of this qualification can support further level 3 study in Sport at Duke's Sixth Form as well as prepare students for further education or apprenticeships. The career options are wide ranging and could include: physiotherapist, sports commentator, sports agent, sports scientist, nutritionist, respiratory therapist and sports professional, plus many more.

Who to see for more information

Mr Hunter.

GCSE PHYSICS

The course

Physics will help you to build up your problem solving, research, and analytical skills. With these skills you'll be able to test out new ideas plus question and investigate other people's theories, which is useful for any kind of job that involves research or debate. Over the whole course you will cover six teaching units with P7 and P8 taught within these modules:

- **P1** - Radiation and waves
- **P2** - Sustainable energy
- **P3** - Electric circuits
- **P4** - Explaining motion
- **P5** - Radioactive materials
- **P6** - Matter, models and explanations
- **P7** - Ideas about Science
- **P8** - Practical Skills

How will I be assessed?

The course has a terminal assessment at the end of Year 11, consisting of two examinations Breadth in Physics and Depth in Physics. You will also be continually assessed over the life of the course with closed and open book tests based on the teaching units as well as a synopsis of prior learning. Regular homework will be provided on-line.

What higher education and career opportunities will this qualification give me?

GCSE Physics provides access to the level 3 Applied Science course in Duke's Sixth Form or further study at A Level. Physics is also a key subject for lots of STEM (**S**cience, **T**echnology, **E**ngineering and **M**aths) careers, particularly in engineering, A physics qualification opens the doors to all sorts of jobs and courses. All the technology that surrounds us is based on the principles of physics, so if you are considering working in any area related to technology from music to medicine, or lasers to law – studying physics is an essential first step. Career opportunities could include; electrician, medical physicist, astronaut, nuclear engineer, bomb disposal technician, meteorologist and climate change analyst, plus many more.

Who to see for more information

Miss Fletcher or one of the Science team.



GCSE Religious Studies

The course

If you have ever wondered the purpose of life, why some people are evil or if murders deserve the death penalty, then Religious Studies GCSE is for you.

In this course we study Christianity and Judaism, the cornerstones of Western Civilisation, as well as a range of contemporary philosophical and ethical viewpoints. You will learn to argue and debate, reason and explain and come to your own conclusions about the following topics:

- Crime and Punishment (Prison, Death Penalty, Reformation and Forgiveness)
- Peace and Conflict (War, Terrorism, Violence and Pacifism)
- Religion and Life (Abortion, Euthanasia, Animal Rights, Origins of the Universe and Humanity)
- Relationships and the Family (Marriage, Divorce, Gender and Sexuality)

How will I be assessed?

There are two examinations which take place at the end of the two Year course.

What higher education and career opportunities will this qualification give me?

Students who take the subject very often have a wide ranging interest in current affairs which impact upon journalism, health and social studies, travel and tourism, English literature and other languages. Students often use the critical skills they gain within the subject to help them in securing places at University which are now valuing RS as a platform for wider study and cultural awareness.

Who to see for more information

Mrs Mills or Miss Weaver.

BTEC Travel and Tourism



The course

The course is for learners who want to acquire knowledge and technical skills through vocational contexts by exploring the aims of different travel and tourism organisations, the features of tourist destinations, how organisations meet customer requirements and the influence on global travel and tourism as part of your Key Stage 4 learning.

Over the course there are three components:

1. Travel and Tourism organisations and destinations.
2. Customer needs in travel and tourism.
3. Influences on global travel and tourism.

How will I be assessed?

Components 1 and 2 are assessed through non-exam internal assessment. Internal assessment for these components has been designed to test knowledge through coursework assignments which include realistic activities.

There is one examined assessment on component 3. This requires learners to apply their knowledge and understanding of the factors influencing tourism, the impact of tourism on destinations and destination management to travel and tourism contexts.

What higher education and career opportunities will this qualification give me?

Successful completion of this qualification can support further level 3 study in Travel and Tourism at Duke's Sixth Form as well as prepare students for further education or apprenticeships. The career options are wide ranging and could include; travel agent, tour manager, travel guide, air cabin crew and hotel manager, plus many more.

Who to see for more information

Mrs Freeman, Mrs Barker and Mrs Fitzsimmons.



BTEC Tech Award in Sport

The course

The Pearson BTEC Level 1/Level 2 Tech Award in Sport, is for learners who want to acquire sector-specific applied knowledge and skills through vocational contexts by exploring the different types and providers of sport and physical activity and the equipment and technology available for participation as part of their Key Stage 4 learning.

What does the qualification cover?

Learners are required to complete and achieve all three components in the qualifications.

- Component 1 - Preparing participants to take part in sport and physical activity.
- Component 2 - Taking part and improving other participants' sporting performance.
- Component 3 - Developing fitness to improve other participants' performance in sport and physical activity.

What can the qualification lead to?

Study of the qualification as part of Key Stage 4 learning will help learners to make more informed choices for further learning, either generally or in this sector. The choices that learners can make post-16 will depend on their overall level of attainment and their performance in the qualification.

Learners who generally achieve at Level 2 across their Key Stage 4 learning might consider progression to:

- A Levels as preparation for entry to higher education in a range of subjects
- Study of a vocational qualification at Level 3, such as a BTEC National in Sport (2016) or a BTEC National in Sport and Exercise Science (2016), which prepares learners to enter employment or apprenticeships, or to move on to higher education by studying a degree in the Sport Sciences or teaching sectors.

Learners who generally achieve at Level 1 across their Key Stage 4 learning might consider progression to:

- Study at Level 2 post-16 in a range of technical routes designed to lead to work, to progression to employment via apprenticeships or further study at Level 3
- Study at Level 2 post-16 through a technical qualification, such as the Pearson BTEC Level 2 Technical Diploma in Sport and Activity Leaders. Learners who perform well in this qualification compared to their overall performance, should strongly consider this progression route as it can lead to employment in the sport sector.

Who to see for more information

Mr Hunter, Mr Taylor, Miss Regan and Miss Mullen

KS4 Options Form 2024



Name: _____ Tutor Group: _____

All of our students will be taking at least 8 GCSEs as per government guidance. They will all study Maths, English Language, English Literature and either Dual or Triple Science. Students taking Dual Science will take one option from each of the three option blocks while those taking Triple Science will just take choices from Block 2 and 3. All students will also complete core studies in RS, PE and PSHCE.

Should students wish to follow the **Ebac route then they should choose either History or Geography and French** as two of their choices. Students also have the choice of taking GCSE RS instead of the core RS offer.

Students should only choose one subject from each of the blocks recorded below. Students can not take the same subject more than once. They should also choose a reserve choice for each block which may be used if any of the courses become oversubscribed.

All pupils will study the subjects in this column	Option Block 1 Open Option (Students should only make a choice from this option block if they have not been told to take Triple Science)	Option Block 2 Open Option (All students choose one subject from this column)	Option Block 3 Open Option (All students choose one subject from this column)	
GCSE English Literature		GCSE French	GCSE French	EBACC Choices
GCSE English Language		GCSE Geography	GCSE Geography	
GCSE Maths		GCSE History	GCSE History	
GCSE Triple or Dual Science	OCR Health and Social Care	GCSE Art	GCSE Art	Open Choices
CORE PE	BTEC Construction	BTEC Business Enterprise	GCSE Engineering	
CORE PSCHCE	WJEC Hospitality and Catering	GCSE Design and Technology	GCSE PE	
CORE RS or GCSE RS	BTEC Sport	BTEC Construction	BTEC Media Studies	
		Cambridge National ICT	BTEC Travel & Tourism	
		WJEC Hospitality and Catering	BTEC Sport	
		BTEC Performing Arts	OCR Health and Social Care	
			GCSE Music	

Option Choice 1 (if not taking Triple Science): _____

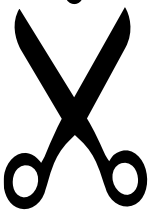
Reserve Choice (if not taking Triple Science): _____

Option Choice 2: _____ Reserve Choice: _____

Option Choice 3: _____ Reserve Choice: _____

RS Option Choice: Core / GCSE

Student Signature: _____ Parent/Carer Signature: _____



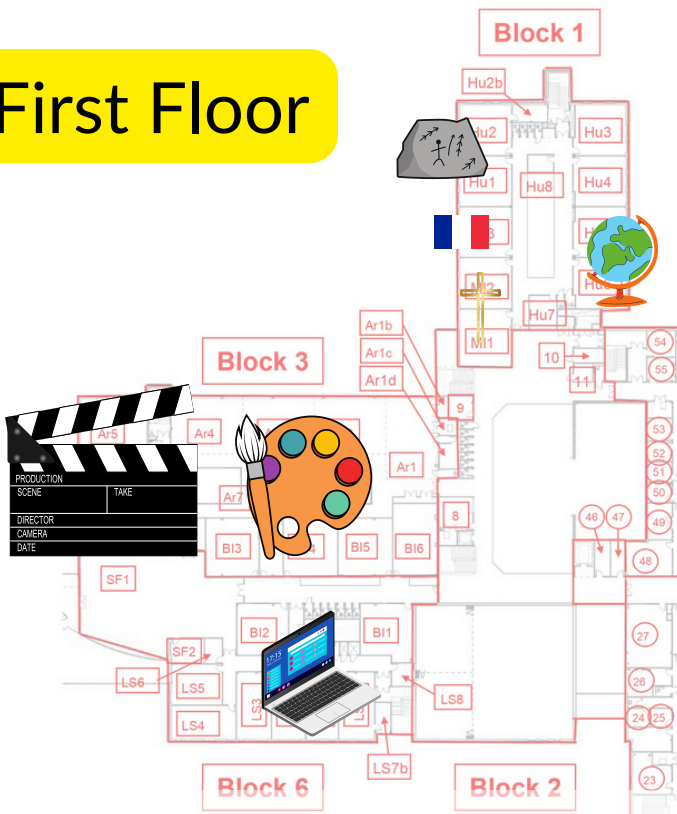
Second Floor



Second Floor

- Maths
- Statistics
- Dual & Triple Science
- Engineering

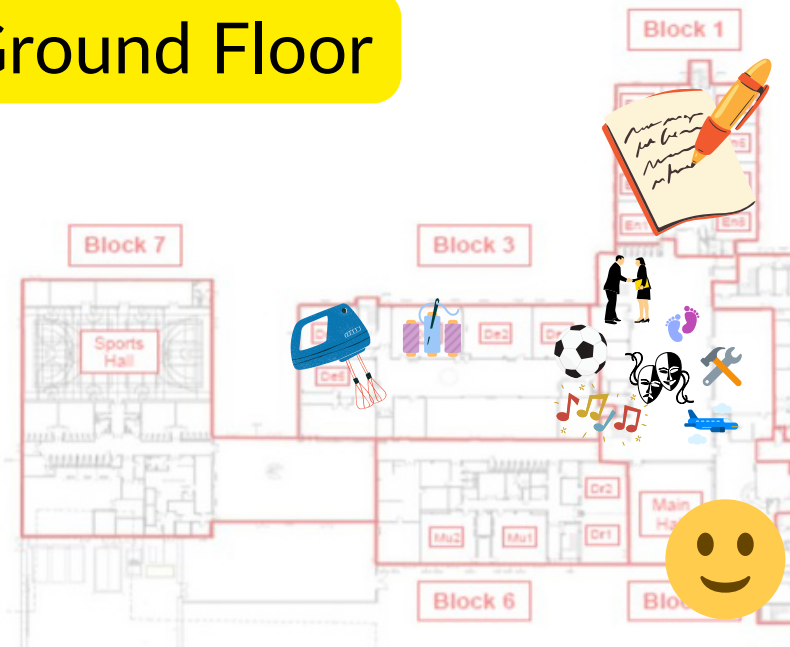
First Floor



First Floor

- History
- Geography
- French
- Religious Studies
- Art
- Creative Media
- IT Nationals

Ground Floor



Ground Floor

- English Language & Literature
- Hospitality & Catering
- Design & Technology
- Music
- Performing Arts
- Health & Social
- Construction
- Enterprise
- Travel and Tourism
- PE/Sport
- Welcome Desk



Duke's Secondary School
Academy Road, Ashington, Northumberland,
NE63 9FZ 01670 816 111
www.dukes.ncea.org.uk