

Sixth Form Prospectus

September 2023



Contents

- 3 Welcome to Duke's Sixth Form**
- 4 Who can apply to Duke's Sixth Form?**
- 5 Pastoral Support**
- 6 Academic Support**
- 7 Extra-curricular and enrichment opportunities**
- 8 Careers Support**
- 9 Education pathways at Duke's Sixth Form**
- 11 Map out your future!**
- 13 Expectations of Duke's Sixth Form students**
- 15 A Level Courses**
 - Art and Design
 - EPQ
 - Geography
 - Mathematics
 - Psychology
 - Religious Studies
 - Sociology
- 20 Level 3 Vocational Courses**
 - Business (double)
 - Construction
 - Creative Media
 - Engineering
 - Esports
 - Health & Social Care (double)
 - Hospitality
 - ICT (double)
 - Music
 - Performing Arts
 - Science (double)
 - Science (single)
 - Sport (double)
 - Travel & Tourism
- 29 How to apply to Duke's Sixth Form**

Welcome to Duke's Sixth Form

Duke's Sixth Form is an exciting and inclusive environment where you will be inspired and supported to achieve your goals.

We pride ourselves on our excellent results, in depth support system and our extensive extra-curricular and enrichment provision.

Our curriculum is designed around the needs and aspirations of students in our community.

Each year our results allow our students to progress to the universities, apprenticeships or employment opportunities of their choice.

Our passionate and dedicated staff are ready to welcome you to Duke's Sixth Form in September.

Who can apply to Duke's Sixth Form?

We welcome applications from our current Year 11 students as well as external students looking to study Level 3 courses.

The Application Process



As a rule, applicants should achieve at least a grade 6 in academic subjects they would like to study (or an associated subject if the A Level subject was not offered at GCSE).

For Vocational Subjects, a Merit is the minimum requirement to access the subject at Level 3 or a grade 4 in English and Maths.

Our team will consider applications on an individual basis where a requirement has not been met.

Check out the link and let our Sixth Form Team tell you why “you don’t have to travel far to get ahead!”

<https://youtu.be/9eS-uRXn83g>

99%
PASS RATE
ACROSS ALL
LEVEL 3
COURSES

100%
WHO APPLIED SUCCESSFULLY
GAINED A PLACE
AT UNIVERSITY

Sixth Form has helped improve my confidence and has allowed me to make informed choices about my future.

Year 13 Student

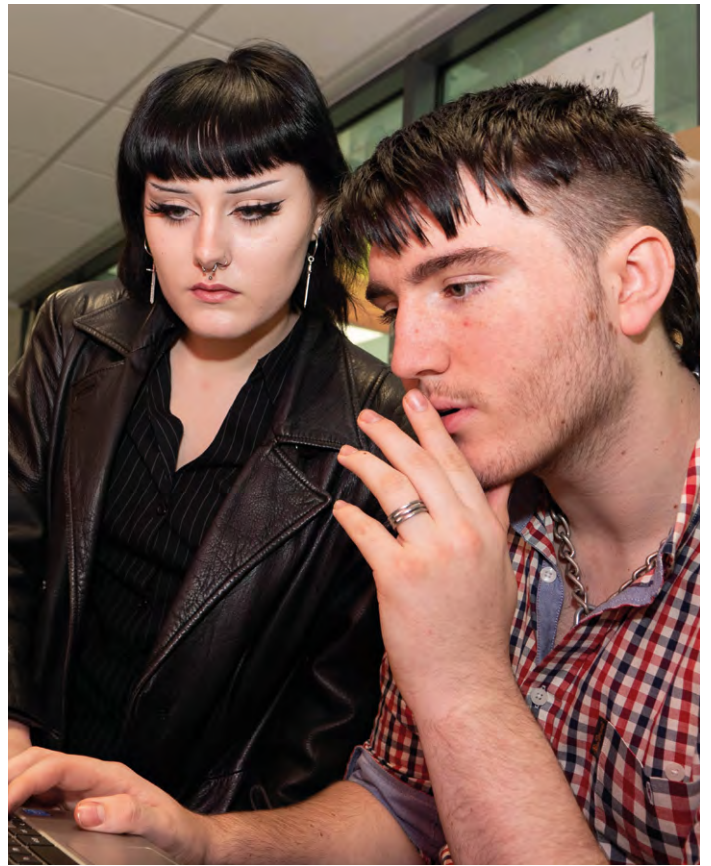
With help from teachers, I have been able to apply to my top university choices.

Year 13 Student

Pastoral Support

We have an excellent system of pastoral support to help students throughout their time with us. The Sixth Form team are dedicated to supporting all students to achieve their full academic potential, providing help and support where necessary.

We have a strong system of reporting progress and parents are provided with intermediate academic reports every term as well as an annual full report.



The Sixth Form team are based within the common room and are on hand all day to support students. Within Duke's Sixth Form we aim to create an environment where learners feel secure, valued and are encouraged to talk in the knowledge that they will be listened to. We have a strong support system that focuses on the wellbeing of our students and we have a good network of external agencies that we work closely with to ensure the needs of our students are met.



Academic Support

During your time with us at Duke's, you can rest assured that your academic progression is in safe hands.

The Sixth Form team will regularly monitor your progress and check in with your teaching staff to ensure that you are on track to achieve your personal best! Where necessary, staff are on hand to support you with any problems you might encounter with your studies.

Whether it be revision tips, subject mentoring, workload management or even just an extra helping hand to stay motivated when things get challenging. With our tailored interventions and monitoring, the Sixth Form team have you covered!

See below for details of how we keep you on track!

How we monitor your progress:

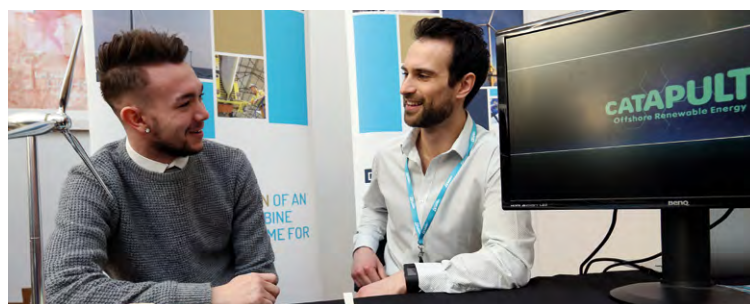
- Data tracking each half term;
- Regular meetings with subject staff to check individual progress;
- Personalised interventions for all students under target;
- Individual target setting and reports;
- Parents Evenings;
- Pre-Public (Mock) Exams and Regular Assessments.



Extra-Curricular and Enrichment Opportunities

Although exam success and the gaining of excellent qualifications is the primary focus of all students and staff at Duke's Sixth Form, in a competitive world it is also imperative that our students gain additional experiences, interests and skills that will make them stand out from the crowd in future university or employment interviews.

Enrichment takes place weekly and students also support lower school enrichment opportunities to improve their skills in leadership and communication.



All of our Year 12 students complete one week's work experience at a destination of their choosing. This work experience week takes place in March.



Enrichment options are important to either help you develop skills needed for employment or university, or they can allow you to gain extra UCAS tariff points to help you enhance your university application.

Year 13 Student

Our students have the opportunity to participate in numerous activities outside of lessons. These opportunities have included:

Extra-Curricular

- University Open Day visits;
- Summer schools;
- Guest speaker programme;
- Work experience placements;
- Careers fairs;
- Industry visits;
- Ethics conferences;
- Debates;
- Mock interviews;
- Annual theme park visits;
- Career Ready programme;
- Barclays Life Skills;
- Departmental enrichment;
- Annual Edinburgh Christmas trip;
- Student leadership team;
- Charity committee;
- Volunteering abroad.

Enrichment

- Work experience;
- In-lesson assistance;
- Esports;
- Gold Arts Award;
- Mandarin;
- Computer programming;
- Extended Project Qualification;
- Sports Leadership;
- Lower School Enrichment Support.

Careers Support

Our Careers team
is here for you!

4 GROWING OPPORTUNITY AREAS

ENERGY,
HEALTH & LIFE SCIENCES,
ADVANCED
MANUFACTURING
AND DIGITAL

4 GROWING SERVICE SECTORS

EDUCATION, CONSTRUCTION,
TRANSPORT & LOGISTICS
AND FINANCIAL,
PROFESSIONAL &
BUSINESS SERVICES

Your personal careers advisor will work with you during Year 12 and 13 to help you map out your future and make good career decisions. We will help you to develop a personalised career plan that is mapped to your skills and ambitions.

Preparing for careers of the future will require particular skills, qualities, and aptitudes, so you will need to be adaptable, flexible, willing to up-skill, and motivated to adjust to different work environments. Study with us and let us help prepare you for the world of Work!

North East growing sectors

Our Careers Provision

- Personal careers plan
- Mock interviews
- Regular 1-2-1 guidance
- Guest lectures
- Masterclasses

Employers that support your learning

- Akzo Nobel
- Bernicia
- NHS
- Port of Blyth
- Northumberland County Council
- ORE Catapult
- Bellway Homes

Routes beyond Dukes...

Whichever path you
choose, you will be on
track for a dream career!

UNIVERSITY

INTERNSHIP

APPRENTICESHIPS

EMPLOYMENT

Education Pathways at Duke's Sixth Form

Our Sixth Form courses are split into a number of different pathways...

Choosing the right courses for Level 3 is a crucial step towards future career pathways. Think and research carefully; find out more about the subjects by talking to the staff who teach them. Consider if your subject choices match your future ambitions, whether that be employment or university. If you are taking a purely academic pathway you will be expected to choose 3 A Level subjects that you will take over 2 years. You can also take the EPQ in Y12. If you are taking a mixed or vocational pathway you will take 4 subjects over the 2 years.

NOTE: ATTAINMENT 8

The Attainment 8 score is based on an average of all GCSE scores achieved by the individual student.

Consequently we are now using this measure as our entry criteria into sixth form study, although some individual subjects may still require the achievement of a particular GCSE grade in order to progress to A Level study.

ACADEMIC PATHWAY

In order to progress to this pathway a student must have achieved an Attainment 8 score of above 60. Students on this pathway will choose 3 A Level subjects and also take an enrichment activity.

(Please note that there may be an individual entry grade for academic subjects. See the subject info pages for details).

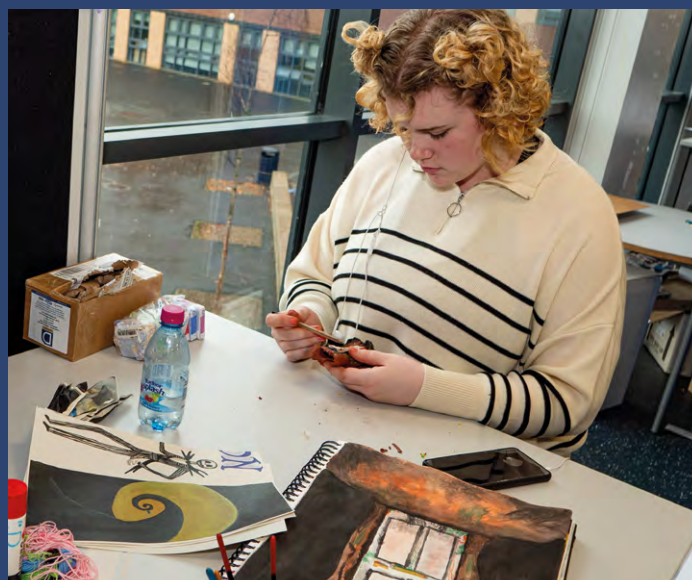
VOCATIONAL PATHWAY

In order to progress to this pathway a student must have achieved an Attainment 8 score of at least 40. Students in this pathway will choose 4 vocational options.

(Note: a double course counts as 2 options).

MIXED ACADEMIC/VOCATIONAL PATHWAY

In order to progress to this pathway a student must have achieved an Attainment 8 score of at least 50. Students in this pathway will choose a mixture of academic and vocational subjects, with a maximum of 2 academic choices.



Vocational courses help you prepare for your future by enhancing organisational and time management skills through meeting deadlines.

Year 13 Student

	BLOCK 1	BLOCK 2	BLOCK 3	BLOCK 4
ACADEMIC	Art	Sociology	Geography	Maths
	Psychology			Religious Studies
	Applied Science (D)	Applied Science (S)	Sport	
VOCATIONAL	Business Studies		Health & Social Care	
	Construction	Media	ICT	
	Esports	Hospitality	Music	Performing Arts
			Engineering	Travel & Tourism

This is a provisional representation of our intended curriculum. Subjects and the options that they are currently in may change as a result of staffing or student uptake.



Map out your future!

At Duke's Sixth Form we have a varied curriculum designed to allow students to progress onto a variety of career and higher education pathways.

These are potential pathways to higher education and careers based on some of our most popular course combinations in recent years!

Applied Science

Sport

Sport Science
Anatomy & Physiology
Nutrition
Medical & Health Sciences
Sports Coaching
Fitness Instructor
Personal Trainer

Physiotherapist
Sports Scientist
Sports Development Officer
Sports Coach
Health Trainer
Sports Agent

Psychology

Health & Social Care

Psychology
Criminology
Social work
Nursing
Education
Anthropology
Law
Sociology
Gender Studies
Speech Therapy
Early Years Practitioner
Paramedic

Nurse / Midwife
Occupational Therapist
Police
Probation Officer
Social Worker
Housing Officer
Teacher
Nursery Nurse
Clinical Psychologist
Human Resources Manager
Psychotherapist
Social Sciences Researcher

Construction

Engineering

Maths

Mechanical Engineering
Civil Engineering
Energy &
Environmental Engineering
Construction Management
Manufacturing Engineering
Electrical Engineering
Offshore Renewable Energy
Mechanical Engineer
Rail Track Maintenance Worker

Marine Engineering Technician
Naval Architect
Project Manager
Offshore Engineering Worker
Electricity Generation Worker
Automotive Engineer
Sheet Metal Work
Advanced Manufacturer
Production Line Operative
Minerals Surveyor

Esports

ICT

Information Systems
Software Engineering
Computer Science & AI
Information Management
Applied Computing
Computer Games Design
IT Service Engineer
IT Security Co-ordinator

Software Developer
Network Manager
Games Designer
IT Project Manager
Forensic Computer Analyst
E-Learning Developer
Web Designer / App Developer
Office Equipment Technician

Business Studies

ICT

Business Management
Human Resources
Games Development
Computer Science
Software Engineering
Marketing Management
Data Entry Manager
Civil Servant
IT Security Co-ordinator
Business Administrator
Software Developer
IT Project Manager

Human Resources Manager
Business Analyst / Adviser
Facilities Manager
Supply Chain Manager
IT Trainer
Franchise Owner
Operational Researcher
Chief Executive
Medical Receptionist
E-Learning Developer
Market Researcher

Art

Creative Media

Music

Performing Arts

Fine Art
Interior & Landscape Design
Media Communications
Drama & Theatre Studies
Textiles & Fashion
Architecture
Public Relations
Publishing
Film & Photography
Liberal Arts & Sciences
Marketing
Music
Session Musician
Broadcast Journalist
Illustrator

TV / Film Sound Technician
Ceramics Design Maker
Printing Assistant
TV Presenter
Music Composer & Arranger
Furniture Designer
Actor
Model Maker
Radio Broadcast Assistant

Sociology

Psychology

Geography

Geography
Psychology
Sociology
Criminology / Law
English / Creative Writing
Journalism
Anthropology
Gender Studies
Liberal Arts & Sciences
Politics & International Relations
Asian / African Studies
Education
Social Policy / Social Work
Archaeology
Broadcast Journalist

Diplomatic Service Officer
Teacher
Solicitor
Forensic Psychologist
Counsellor / Social Worker
Copy Editor
Play Therapist
Author
Cognitive Behavioural Therapist
Probation Officer
Cartographer
Hydrologist
Travel Guide
Geographic Information Systems Technician

Applied Science

Health & Social Care

Nursing
Physiotherapy
Pharmacy Technician
Biological Sciences
Forensic Science
Education

Social Work
Laboratory Work
Paramedic
Speech Therapist
Researcher
Midwifery

Expectations of Duke's Sixth Form Students

Whilst our Sixth Form students experience more freedoms than in the lower school, with that comes an increased emphasis on independent study.

Students are expected to structure their time effectively to manage their workload both in school and at home. There are times of the academic cycle that workload can increase significantly and without effective time management and a strong work ethic, students can become overwhelmed with deadlines, classwork and revision. We will provide the students with the tools and support they need to overcome these challenges, but ultimately, students must hold themselves to account.

As a rule, exam board guidelines state that students taking A Level subjects should be carrying out at least 3 hours of independent study per subject per week.

Vocational courses are assessed through a combination of internal coursework, external examinations or controlled assessments. As such, time management and regular focussed independent study become the cornerstones of success. Students with good attendance who manage their time effectively regularly attain the highest grades (Distinction*) in their vocational studies.

OUR BASIC EXPECTATIONS OF STUDENTS ARE AS FOLLOWS:

- A positive attitude with a proactive approach to study
- Attendance of over 95%
- Punctuality at all lessons and tutor time
- Engagement in tutor time activities
- Regular Focussed Independent Study



How can I help my child reach their target grade?

Target grades are set within the first couple of weeks of students starting at Duke's Sixth Form. They are set using an average of each individual students GCSE performance. Sixth Form performance is then monitored half termly by comparing performance predicted by teaching staff against these target grades.

To support students in reaching these target grades, parents can:

- Regularly discuss the targets with the students and keep them focussed on them;
- Discuss any improvement targets sent home via the Duke's Sixth Form monitoring process and help to focus towards them;
- Ensure home study is regular and effective;
- Emphasise the importance of using school study periods effectively;
- Ensure effective home study for (PPE) pre-public exams (see important dates below);
- Attend parents' and results evenings (see important dates below);
- Ensure attendance at any departmental study sessions;
- Ensure overall good school attendance and punctuality.

SOME IMPORTANT CALENDAR DATES FOR YEAR 12 (SPECIFIC DATES TBC):

SEPTEMBER	Study Skills Programme
	Unifrog launch
	Deadline for course changes (end of the month)
OCTOBER	Parents' meet and greet evening
	Initial Y12 report sent home
NOVEMBER	Maths / English retake period
	Y13 Pre-public examinations (mock exams)
DECEMBER	Y13 Parents' evening
JANUARY	BTEC / Vocational Examination Period
FEBRUARY	Y12 & 13 subject report sent home
	Y12 and 13 pre-public examinations
MARCH	Work experience week
	Y12 Parents' Evening

MAY	Data capture report sent home
JUNE	Maths / English retake period
	Vocational summer examination period
	Y12 progression day
	Y12 pre-public exam week
JULY	PPE re-sit week
	PPE results
AUGUST	Y12 results day



A Level Study

ART & DESIGN

A Level Art, Craft & Design (AQA)

Requires: Grade 5 in GCSE Art, Photography or 3D Design

Students will be introduced to a variety of experiences that explore a range of fine art media, processes and techniques. They will be made aware of both traditional and new media.

Students will explore the use of drawing for different purposes, using a variety of methods and media on a variety of scales. Students may use sketchbooks/workbooks/journals to underpin their work where appropriate. Students will explore relevant images, artefacts and resources relating to a range of art, craft and design, from the past and from recent times, including European and non-European examples. Student responses must be shown through practical and critical activities that demonstrate their understanding of different styles, genres and traditions.

Assessment Method

There are 2 components completed in Year 1 and 2 completed in Year 2.

60% coursework and **40%** external component set by AQA.

Career Progression

This specification is an appropriate foundation for further study of art and design or related subjects in higher education.

Many students go on to a foundation course at college which is a pathway into higher education. Other students have gone on directly to study architecture, textiles, fashion, advertising and interior design at university.

"This course has allowed me to study a very wide range of media and explore my own ideas, as a result I have created an amazing portfolio which has helped me get into university".

Year 13 Student

EPQ

Level 3 Extended Project Qualification (AQA)

The Extended Project Qualification (EPQ) allows students to extend their abilities beyond the A Level syllabus and prepare for university or their future career. It is worth half an A Level (28 UCAS points) so can be used to earn extra UCAS points. It is now recognised widely amongst universities as an accompaniment to the traditional choice of 3 subjects at A Level. It is graded from A*-U and is based on a topic chosen by the student which can be completed in a variety of formats from the more traditional essay style project, through to those who wish to produce an artefact, event, piece of art, exhibition - this list is endless!

Assessment Method

100% coursework which is internally and externally assessed.

Career Progression

The EPQ allows students to embark on largely self-directed projects. By taking responsibility for the choice and design of an individual project (or an individual role in a group project) students:

- become more critical, reflective and independent learners
- develop and apply decision-making and problem-solving skills
- increase their planning, research, analysis, synthesis, evaluation and presentation skills
- learn to apply new technologies confidently
- demonstrate creativity, initiative and enterprise.

All of these skills are widely recognised as transferable for both the completion of higher education and the world of work.

"Nearly 1 in 5 successful applicants to Durham had completed the EPQ".

The Sunday Times, 16 Feb 2014

"Newcastle University values the skills of research and independent learning that the Extended Project is designed to develop and welcomes applications from students offering an Extended Project alongside other qualifications of an appropriate level".

(www.aqa.org.uk)

MATHEMATICS

GEOGRAPHY

A Level Geography (AQA)

Requires: Geography or English at Grade 5

Geography reflects our world today and encourages students to think critically about the world around us and our impact on the environment.

Studying Geography gives students the opportunity to travel the world via the classroom, learning about both natural and social sciences along the way. We are constantly exposed to geographical issues in everyday life, including: environmental concerns; natural disasters; world weather; local developments; urban and rural change; population movements; maps and travel. Students can develop an awareness and understanding of the patterns, processes and relationships that characterise human and physical environments.

Traditionally, Geography is seen as a bridge between the arts and sciences, enabling students to keep their options open.

Assessment Method

There will be two exams taken at the end of Year 13.

Paper 1: Physical Geography

Paper 2: Human Geography

Both exams are worth **40%** of the final qualification.

An independent fieldwork investigation (coursework) contributes the final **20%**.

Career Progression

Geography graduates have a range of analytical and research skills, making them suitable for a range of career opportunities.

Opportunities for Geography graduates include:

- Cartographer
- Commercial/residential surveyor
- Environmental consultant
- Geographical information systems officer
- Planning and development surveyor
- Teacher
- Town planner.

"Geography students hold the key to the world's problems".

Michael Palin

"It is inherently multidisciplinary in a world that increasingly values people who have the skills needed to work across the physical and social sciences"

Guardian, 2015

A Level Mathematics (Edexcel)

Requires: Grade 6 in GCSE Maths

Grade 7 in GCSE Maths if studying Physics also

A Level Mathematics is an interesting and challenging course which extends the methods you learned at GCSE and includes applications of mathematics, such as Statistics and Mechanics.

Statistics – Collecting and analysing data and using this to make predictions about future events. Many subjects make use of statistical information and techniques. An understanding of probability and risk is important in careers like insurance, medicine, engineering and the sciences.

Mechanics – Modelling and analysing the physical world around us, including the study of forces and motion. Mechanics is particularly useful to students studying Physics and Engineering.

New AS and A Levels in Mathematics are being introduced. There will be more emphasis on problem-solving, reasoning and modelling, and a requirement for the use of technology.

Assessment Method

All examinations take place at the end of Year 13.

3 written papers each lasting 2 hours and worth 100 marks.

Paper 1: Pure Maths 1

Paper 2: Pure Maths 2

Paper 3: Statistics and Mechanics

Career Progression

Mathematics A Level students and graduates are in high demand by employers. A qualification in Maths will make you stand out from the crowd. Maths is the essential transferable component across all Science, Engineering, Technology and Maths subjects.

The reason why so many employers highly value Mathematics qualifications is Mathematics students become better at thinking logically and analytically. Through solving problems, you develop resilience and can think creatively and strategically. The writing of structured solutions, proof and justification of results help you to formulate reasoned arguments. And importantly you will have excellent numeracy skills and the ability to process and interpret data.

People with Maths qualifications can go into accounting, medicine, engineering, forensic pathology, finance, business, consultancy, teaching, computing, games development, scientific research, programming, civil service, design, construction and astrophysics, to name but a few!

"Careers for men and women with good mathematics skills and qualifications are not only well paid, but they are also often interesting and rewarding. People who have studied mathematics are in the fortunate position of having an excellent choice of career".

PSYCHOLOGY

A Level Psychology (AQA)

Requires: Grade 6 in GCSE Maths and English Language

Psychology is the study of the human mind and behaviour. Some of the everyday phenomena which psychology has attempted to explain range from; how crowds act at a football match, why some people conform in a social situation and what causes psychological disorders such as depression and anorexia. The broad range of topics studied at A Level Psychology means that there is something interesting for everyone to study, whether you are studying Sciences, Humanities or Languages.

There are 3 papers in total with the following content;

Paper 1: Social Influence, Memory, Attachment and Psychopathology

Paper 2: Approaches in Psychology, Biopsychology and Research Methods.

Paper 3: Issues and Debates in Psychology, Gender, Schizophrenia and Forensic Psychology.

Assessment Method

Assessment will be **100%** through examinations in Year 13. Three exams each worth **33.3%** of the final A Level grade.

Career Progression

A Level Psychology provides good preparation for higher education and is accepted by all universities as a full A Level. It is recognised as a science by universities and is a popular fourth subject alongside science and maths for those students wishing to study medicine or veterinary science. It can also be taken as a subject which is complimentary to English, Geography, Sociology and other humanities subjects as it requires a high level of extended writing.

Psychology A Level is useful for a wide range of careers including; teaching, care work, social work, the police force, business and human resources and youth work. Psychology is also useful for careers linked to science such as biomedicine, forensic science, pathology and criminology.

"I think it's the only subject that gives you a deeper understanding of human behaviour and encourages critical thinking".

Year 13 Student

RELIGIOUS STUDIES

A Level Religious Studies (AQA)

Requires: Religious Studies and/or English at Grade 5

Religious Studies looks at some of the biggest questions faced by man: Does God exist? What happens when we die? What is the self and does it really exist? How do faith, philosophy and ethics interact? If you are a deep thinker and enjoy discussions and debates this is very much the subject for you.

We will study:

Component 1: Philosophy and Ethics

Section A: Philosophy of Religion

- Arguments for the existence of God
- Evil and suffering
- Religious experience
- Religious language
- Miracles
- Self and life after death

Section B: Ethics and religion

- Ethical theories
- Issues of human life and death
- Issues of animal life and death
- Introduction to meta-ethics
- Free will and moral responsibility
- Conscience
- Bentham and Kant.

Component 2: Study of Religion and Dialogue (Christianity)

- Sources of wisdom and authority
- God/gods/ultimate reality
- Self, death and the afterlife
- Good conduct and key moral principles
- Expression of religious identity
- Religion, gender and sexuality
- Religion and science
- Religion and secularisation
- Religion and religious pluralism.

Assessment Method

There will be two exams taken at the end of Year 13, each worth **50%** of the A Level.

Paper 1: Philosophy and Ethics

Paper 2: Religion and Dialogue

"There isn't a God more real and truer than the God of your knowledge."

Sorin Cerin

SOCIOLOGY

A Level Sociology (AQA)

Requires: Grade 6 in GCSE English Language

A Level Sociology will help you to make sense of the society we live in and understand the cultural and identity issues which affect us all.

You will learn a number of skills including the use of evidence to support your arguments, how to investigate facts, and critical thinking. It is relevant to the society you live in so you are bound to enjoy learning about topics that are relevant to everyday life; plus it opens the door to a fantastic range of interesting careers.

During the course we study the following modules:

Families

Why has family structure changed?

Why do children seem to have more power in the household?

Education

Why do some students achieve more than others?

What factors both within schools and in wider society influence achievement?

Media

What role does the media play in shaping our society?

Can we trust everything we see?

Crime and Deviance

Which members of society commit the most crime?

What causes people to commit crime?

Research methods and theory

Assessment Method

100% examination, 3 papers taken at the end of Year 13

Career Progression

Studying Sociology at university can give you a whole host of exciting career options, including:

- Social work
- Human resources
- Advertising
- Policing
- Marketing
- Journalism
- Law
- Teaching

*"My students often ask me, 'What is sociology?'
And I tell them, 'It's the study of the way in which human
beings are shaped by things that they don't see.'"*

Sam Richards



Level 3 Vocational

As a rule you will need to have achieved either a merit grade at a vocational subject at GCSE or a grade 4 in English Language and Maths for progression onto our vocational subjects.

BUSINESS (DOUBLE)

BTEC Level 3 National Diploma in Business
Pearson 601/7157/1 (2 A Levels)

Business opens up new doors into real-life situations. Not only does it prepare you for working life but it also gives you the tools to manage your personal finances. Employers have approved this qualification and have been involved in the process to ensure that if you study this course you will be gaining the skills and knowledge they look for when employing someone. The course is for students who are interested in learning about the business sector alongside other fields of study, with a view to progressing on to a wide range of higher education courses, not necessarily in business related subjects.

The topics taught are as follows:

- Exploring Business
- Developing a Marketing Campaign
- Personal and Business Finance
- Recruitment and Selection Process
- Managing an Event
- International Business
- Principles of Management
- Visual Merchandising

Assessment Method

There are five coursework units and three external assessment units, two of which are written tasks set by the exam board.

This means that you are assessed **55%** through coursework and **45%** through external assessment.

Career Progression

Progression routes lead students into studying Business Studies or a similar degree programme at university. Career possibilities include; human resources, business management, marketing and promotion, accountancy and careers in the financial sector. There are also many opportunities for involvement in practical and organisational activities e.g. managing events.

"Business is a great option to take because it doesn't just give you information about the business world, but you also learn valuable life skills you could use in the future. For example help with managing your personal finances, understanding the best bank accounts and car loans to get".

Year 12 Student

Sixth Form is a safe and welcoming environment that allows us to express ourselves.

Year 13 Student



CONSTRUCTION

Pearson BTEC Level 3 National Extended Certificate in Construction and the Built Environment (603/0862/X)

4 mandatory units studied over 360 GLH /
Equivalent in size to one A Level:

- 1 - Construction Principles 120 GLH -
External Assessment / Exam.
- 2 - Construction Design 120 GLH -
External Assessment / Synoptic Assignment.
- 4 - Construction Technology 60 GLH -
Internal Assessment / Assignment.
- 5 - Health and Safety in Construction 60 GLH -
Internal Assessment / Assignment.

Assessment Method

The external units account for **66%** and all units are **100%** mandatory.

Career Progression

The Extended Certificate is for learners who are interested in learning about the construction sector alongside other fields of study, with a view to progressing to a wide range of higher education courses, not necessarily in construction-related subjects. It is designed to be taken as part of a programme of study that includes other appropriate BTEC Nationals or A Levels.

This course is ideal for those who want to embark on a degree apprenticeship within the construction industry as it prepares you in the use of Computer Animated Drawing techniques (CAD), Construction Project Management, application of H&S laws and regulations and gives you a firm understanding how structures are set up and work.

Typical Construction pathways where this course is beneficial via higher education routes are: Health and Safety Manager, Estimator, Quantity Surveyor, Innovative Home Designer, Architect, Civil Engineer and many more.

CREATIVE MEDIA (SINGLE)

BTEC Level 3 Extended Certificate in Creative Digital Media Production Edexcel 601/7467/5 (1 A Level)

The content of the qualification relates directly to the skills and understanding needed for further study in creative digital media production and has been developed in consultation with higher education providers. Over three units of mandatory content, students gain a broad understanding of the subject and learn the skills to produce media artefacts. They develop their ability to analyse and deconstruct media images and representations. They learn the communication and planning skills needed to work in teams through vocational media projects. An optional introductory unit in film allows students to create engaging digital media content and platforms.

Assessment Method

Internal coursework 2 assignments total — **42%**

External exam — **25%**

External set task — **33%**

Career Progression

The qualification is intended to carry UCAS points and is recognised by Higher Education providers as contributing to meeting admission requirements for many courses including Media Studies, Journalism, film & TV, Animation and other creative sectors.

"Pick up a camera. Shoot something. No matter how small, no matter how cheesy, no matter whether your friends and your sister star in it. Put your name on it as director. Now you're a director..."

James Cameron

"It is not the beauty of a building you should look at; it's the construction of the foundation that will stand the test of time".

David Allan Coe

I believe teachers have a high level of confidence in the ability of students to achieve their goals.



Year 13 Student

ENGINEERING (SINGLE)

Level 3 Cambridge Technical Extended Certificate in Engineering OCR (1 A Level)

Students will develop professional and practical skills by applying their scientific and mathematical understanding to real-life problems. Students will learn how to identify and correct for errors, generate mathematical models with tangible applications, draw technical diagrams and identify suitable manufacturing methods and materials for production.

Every student will study four mandatory units which focus on the practical application of science and maths skills and the basic principles of engineering mechanical and electrical systems:

- Mathematics for Engineering
- Science for Engineering
- Principles of Mechanical Engineering
- Principles of Electrical and Electronic Engineering

There will also be two modules from the options block which will further develop practical engineering skills and the properties of engineering materials:

- Mechanical Design
- Materials Science

Assessment Method

Four external examinations in:-

- Mathematics for Engineering
- Science for Engineering
- Principles of Mechanical Engineering
- Principles of Electrical and Electronic Engineering

Two internally assessed units:-

- Mechanical Design
- Materials Science

This qualification allows students to apply their skills, knowledge and understanding to tasks or activities that are relevant to how mechanical systems, electrical systems, materials science and design are used in businesses involved in research, design and manufacture. Having an appreciation of how these are used in work will also help to prepare students for continuing education in this sector.

*"Scientists investigate that which already is.
Engineers create that which has never been".*

Albert Einstein

ESPORTS

Pearson BTEC Level 3 National Extended Certificate in Esports (603/5425/2)

Esports is defined as organised competitive gaming, which is human versus human, either as individuals or in teams. The Esports industry is a fast-growing global industry. The global Esports market is projected to reach U.S. \$1.79 billion in 2022; as such this qualification has been developed to meet this upcoming demand for skills in Esports.

Assessment Method

Learners taking this qualification will study four mandatory units, all of which are internally assessed:

- Unit 1: Introduction to Esports
- Unit 2: Esports Skills, Strategies and Analysis
- Unit 3: Enterprise and Entrepreneurship in the Esports Industry
- Unit 4: Health, Wellbeing and Fitness for Esports Players

Career Progression

The qualification is aimed at learners who want to progress to employment in the Esports industry, possibly via an apprenticeship, or who may aspire to enter higher education. The qualification is endorsed by the British Esports Association as being suitable for learners who want to work in the industry. This means that it will be recognised by employers and will support entry into the industry in a range of roles. This qualification also offers learners the opportunity to progress to a broad range of higher education programmes, including bachelor's degrees.

Jobs roles that are available within Esports include:

- Esports player
- team coach
- events organiser
- shoutcaster and presenter
- social media influencer
- video production editor
- photographer
- data analyst.



Sixth Form allows us to explore different careers and gain valuable skills.

Year 13 Student

HEALTH & SOCIAL CARE (DOUBLE)

OCR Cambridge Technical Diploma in Health & Social Care (OCR 05833) (2 A Levels)

This course encompasses a wide range of issues and topics linked to Health and Social Care. Students get the chance to explore areas of the subject they did not realise existed such as Nutrition, Health Promotion and Public Health. The course is designed to be adaptable to the requirements of the vocational sector as well as the students own interests and aspirations. We try to include as many practical elements as possible over the duration of the course. Students will not only complete their coursework but will get the opportunity to gain their First Aid Certificate and complete an extensive period of work experience interacting with a range of service users in different care settings. Guest speakers also feature during lessons so that students can see how their knowledge can be applied and built upon in a 'real world' context.

Assessment Method

5 exams and 7 centre assessed units over 2 years

Career Progression

This OCR qualification prepares students for both university and employment. The range of careers linked to Health and Social Care are extensive and include: Counselling, Physiotherapy, Nursing, Ambulance Technician, Social Work and many more.

"This is a great course with loads of different and interesting units to study. I had no idea about the huge range of careers that were linked to Health and Social Care".

Year 12 Student

HOSPITALITY

BTEC Level 3 in Hospitality (QCF) Subsidiary Diploma Edexcel 500/8197/4 (1 A Level)

The hospitality industry contributes billions of pounds each year to the UK economy. BTEC Level 3 Hospitality offers various career paths in a range of areas, including management, operations and self-employment. The hospitality sector is made up of a variety of different sub-sectors such as hotels, restaurants, event management and catering.

BTEC Level 3 qualifications in hospitality give learners the opportunity to make progress in the sector, whether their chosen route is employment, an apprenticeship or university. All qualifications for this sector introduce learners to essential understanding in the following areas of the hospitality industry:

- Scale and Diversity
- Classification systems
- Organisation and structure of businesses operating in this industry
- Purpose of support functions in hospitality such as finance and marketing.

Assessment Method

100% - Coursework Assessment

Career Progression

This BTEC qualification prepares students for both university and employment. Working in hotels, restaurants, event management and catering, contract catering, specialist catering and self-employment are just a few of the career paths.

"The art of cooking - it's when you mix craftsmanship at the highest level with creativity".

Eric Ripert (Chef/Co-owner Le Bernardin)

ICT (DOUBLE)

Level 3 Cambridge Technical Diploma in IT OCR 5842 (2 A Levels)

Cambridge Technical in IT will help you to achieve your potential and progress to the next stage of your lives, whether it be higher education, an apprenticeship, or employment.

This course has been designed to be refreshing with exciting content that is up to date, engaging, fit for purpose and suitable for the needs of young people. To do this, the course was designed with universities, employers and industry specialists to make sure you will gain the right combination of knowledge, understanding and skills required for the 21st century.

A wide range of centre-assessed units with practical and wider project-based assessment opportunities, as well as examined units on the Fundamentals of IT, Global Information, and Cyber Security, has resulted in focused qualifications. The Diploma has four vocational pathways within it; at least one pathway must be followed:

1. IT Infrastructure Technician
2. Emerging Digital Technology Practitioner
3. Application Developer
4. Data Analyst

Assessment Method

At least three externally examined units and a choice of eight further units, centre-assessed and moderated by OCR, which will make up a specialist endorsed pathway.

Career Progression

Level 3 Cambridge Technical provide a strong base for progression to university, apprenticeships or work and are recognised for UCAS tariff points. This qualification also supports pathways onto non-ICT related courses including; business, engineering, financial and resource management, science and medicine.

"I have had the chance to try out lots of new software that I had never used before".

Year 13 Student

"I am gaining loads of UCAS points from this course".

MUSIC (SINGLE)

Level 3 BTEC Extended Certificate in Music Edexcel (1 A Level)

This course is designed to offer some flexibility and personalisation of the course alongside mandatory units, all of which combine to provide a qualification that is widely recognised by universities and employers. Students will study mandatory units including; Ensemble Music Performance techniques, Practical Music Theory and Harmony, and Professional Practice in the Music Industry. One further unit is studied, selected from a range of options including Arranging Music, Composing Music, Solo Performance, Music Investigation, amongst others.

Students will develop their practical skills and musical understanding through a range of practical opportunities, each with a 'real-life' vocational context as well as learning about the wider music industry.

Further to this, students will continue to develop a range of transferable skills that are highly regarded by Higher Education and employers.

Assessment Method

Mandatory Units

- 1 – Task: set and marked by exam board (Practical Music Theory and Harmony)
- 2 – Assignment: set and marked internally (Professional Practice in the Music Industry)
- 3 – Task: set and marked by exam board (Ensemble Music Performance)

Optional Unit

Assignment: set and marked internally (usually we select Solo Performance as the optional unit)

Career Progression

Beyond KS5 you may progress to study at degree level. Options include; Music, Music Promotion, Sound Engineering, Music Journalism and Music for Film Television and Games plus many more.

Careers within the music industry include performer, music therapist, music teacher, sound technician, arts administration and many more.

"Music expresses that which cannot be said and on which it is impossible to be silent".

Victor Hugo

PERFORMING ARTS (SINGLE)

Level 3 BTEC Extended Certificate in Performing Arts Edexcel (1 A Level)

This course is designed to offer some flexibility and personalisation of the course alongside mandatory units, all of which combine to provide a qualification that is widely recognised by universities and employers. Students study mandatory units including; Investigating Practitioner's Work, Developing Skills and Techniques for Live Performance, and Group Performance Workshop. One further unit is studied, selected from a range of options including Writing For Performance, Acting Styles, Improvisation, Variety Performance and others.

Students will develop their practical skills and musical understanding through a range of practical opportunities, each with a 'real-life' vocational context as well as learning about the wider Performing Arts industry.

Further to this, students will continue to develop a range of transferable skills that are highly regarded by HE and employers.

Assessment Method

Mandatory Units

- 1 — Task: (Investigating Practitioner's Work) set and marked by exam board.
- 2 — Assignment: (Developing Skills and Techniques for Live Performance) set and marked internally
- 3 — Task: (Group Performance Workshop) set and marked by exam board

Optional Unit

Assignment: set and marked internally

Career Progression

Beyond KS5 you can study at Degree level, any Performing Arts / Acting / Dance related subjects - and there are many varied courses at Further and Higher Education institutions.

Careers within the Performing Arts industry include performer, actor, community arts worker, dancer, drama therapist, theatre director plus many more.

SCIENCE (DOUBLE)

OCR Level 3 Cambridge Technical Diploma in Laboratory Skills OCR (2 A Levels)

Students will develop professional and practical skills through carrying out real experiments and research, working with local employers, allowing them to practice lab techniques required in an industrial setting as well as theoretical knowledge. Students will be made aware of safe working practices in a lab and the strict legal requirements they must adhere to. Students will also gain an understanding of the different types of scientific industries and settings plus how laboratory design can vary across organisations and sectors.

Every student will complete four mandatory units, which focus on the laboratory techniques and scientific principles:

- Science Fundamentals
- Laboratory Techniques
- Scientific Analysis and Reporting
- Control of Hazards in the Laboratory

Assessment Method

Three external examinations in:-

- Science Fundamentals
- Scientific Analysis and Reporting
- Laboratory Techniques

Four internally assessed units, including three optional units, depending on which of the three qualification pathways are chosen by the student. The three pathways are:-

- Human Sciences
- Environmental Science
- Food Science

Each pathway contains three tailored coursework-based modules that are designed to give a deeper understanding of the skills, knowledge science that is used within the workplace sector they are interested in. Students will explore the possible options and confirm their chosen pathway during the first year of the course. Students will gain an understanding of the different types of scientific industries and settings plus how laboratory design can vary across organisations and sectors. When it comes to progression or employment, students will understand the variety of opportunities available to them, and the roles and responsibilities of businesses and organisations within the sector.

"I regard the theatre as the greatest of all arts forms, the most immediate way in which a human being can share with another the sense of what it is to be a human being".

Oscar Wilde

"Only the applied scientist sets out to find a "useful" pot of gold ... the applied scientist is a prospector. The pure scientist is an explorer."

Jacques-Yves Cousteau



The teaching in Sixth Form is good because you develop a positive relationship with staff which makes learning more enjoyable.

Year 13 Student

SCIENCE (SINGLE)

OCR Level 3 Cambridge Technical Extended Certificate in Laboratory Skills OCR (2 A Levels)

Students will develop professional and practical skills through carrying out real experiments and research, working with local employers, allowing them to practice lab techniques required in an industrial setting as well as theoretical knowledge. Students will be made aware of safe working practices in a lab and the strict legal requirements they must adhere to. Students will also gain an understanding of the different types of scientific industries and settings plus how laboratory design can vary across organisations and sectors.

Every student will study five mandatory units which focus on the laboratory techniques and scientific principles:

- Science Fundamentals
- Laboratory Techniques
- Scientific Analysis and Reporting
- Control of Hazards in the Laboratory

Assessment Method

Two external examinations in:-

- Science Fundamentals
- Laboratory Techniques

Three internally assessed units:-

- Control of Hazards in the Laboratory
- Product Testing Technique
- Microbiology

Career Progression

This qualification allows students to apply their skills, knowledge and understanding to tasks or activities that are relevant to how human sciences, environmental sciences and food science are used in the workplace. Having an appreciation of how these are used in work will also help to prepare students for continuing education in this sector.

"The scientist is not a person who gives the right answers, he's one who asks the right questions".

Claude Levi-Strauss



SPORT (DOUBLE)

Cambridge Technical Level 3 Sport and Physical Activity Diploma (OCR)

Requires: Grade 4 or above in GCSE English Language
Grade 4 or above in GCSE Maths
Grade 4 or above in GCSE PE or Level 2 BTEC Sport (Merit or Distinction)

The Cambridge Technical Sport and Physical Activity course is based around the theory of sport and science. This qualification is not just about being able to play sport or deal with elite athletes; employers need people who are able to develop sports skills for teams and individuals, work with clients and participants to improve their fitness and change their lifestyles and monitor progress and improvement over time.

Therefore, this qualification will develop learners' skills in preparation for employment in sports coaching or personal training either through an apprenticeship or directly into work. The students will study various units over two years some examples of the units to be covered include; Body systems and the effects of Physical Activity, organisation of sports events and sports injury and rehabilitation. The course is mainly classroom based but we try to link with practical sport to enhance the student's experience. We also have to evidence employer engagement and have links with J4K coaching, Active Northumberland and Ben Harmison Fitness. These partnerships are used over the two years to help deliver a realistic experience for our students.

Assessment Method

Assessment within CTEC Sport involves a combination of external examinations (3 in total) and internal coursework based assessments, most of which have a practical application element. You will be assessed on your ability to apply theoretical content to a range of scenarios.

Career Progression

The apprenticeships that this qualification can lead to, include Advanced Level apprenticeships in Coaching and Personal Training.

Job roles that this course could help to prepare you for include Personal Trainer, Assistant Sports Coach or Sports Activity Coordinator.

"PE and Sport are great subjects. We learn about the theory of sport and apply our practical knowledge. The teachers get all students to do their best and we set personal targets for our learning. The courses are challenging but we are in a supportive environment. I like the questioning and feedback to extend our understanding. I really enjoyed going to Newcastle Falcons and learning about sports massage".

Year 13 Student

Having a part time job or work experience linked to your university choices helps you develop the key skills required on your course.

Year 13 Student

TRAVEL & TOURISM (SINGLE)

Pearson BTEC Level 3 National Extended Certificate in Travel and Tourism (601/9023/1)

The travel and tourism industry in the UK is of major importance to the economy. There are many influences on the industry, and they are changing all the time. Some of them are within the control of travel organisations, while others are beyond their control. You will look at different types of destinations and their importance. Investigate the features and appeal of global destinations. Explore how to develop a successful marketing plan for use by travel and tourism organisations to attract and engage with customers using research data. This qualification gives a broad introduction to the travel and tourism industry, with an emphasis on core knowledge and fundamental skills that are transferable across other sectors.

The topics taught are as follows:

- The World of Travel and Tourism
- Global Destinations
- Principles of Marketing in Travel and Tourism

Then one from these two options:

- Visitor Attractions
- Events, Conferences and Exhibitions

Assessment Method

There is a mix of internal and external assessment on this course. Two externally assessed units and two coursework units.

Career Progression

In addition to the travel and tourism sector-specific content, the requirements of the qualification will mean that students develop transferable skills, which are highly regarded by higher education providers and employers. The qualification will give student transferable knowledge, understanding and broad skills. Progression routes lead students into studying Travel and Tourism or a similar degree programme at university. Career possibilities include a wide range of opportunities for students to work within a Travel and Tourism Organisation such as an Airport Information Assistant, Cabin Crew, Heritage Officer, Hotel Manager, Hotel Receptionist, Resort Representative, Tourist Guide, Travel Agent, Tour Operator, plus many more.



How to apply to Duke's Sixth Form



INTERNAL APPLICANTS

Our Year 11 students at Duke's will all have options interviews during December with the Sixth Form Team. During this interview, any students considering Duke's Sixth Form will complete an application form to register their interest. Further interviews will be conducted in January to give a firm indication of the most likely destinations for students, application forms can be amended at this point.

Final submissions of applications should be made by 17/2/23.

Students will be sent a conditional offer following this date.

EXTERNAL APPLICANTS

Any external applicants should contact our Head of Sixth Form by emailing danielle.towers@dukes.ncea.org.uk or calling 01670 816111 ext 370 to register their interest and arrange an interview.

Further details of courses can be found on the Sixth Form area of the Duke's website.



Josephine Butler Campus
Academy Road, Ashington, NE63 9FZ
Tel: 01670 816 111 ext 370