

# MURRAY PARK SCHOOL



YEAR 9

## OPTIONS PACK JANUARY 2021

DEADLINE FOR SUBMISSION OF OPTIONS CHOICES:  
FRIDAY 26<sup>TH</sup> FEBRUARY



*“PROUD TO BE HERE”*

# A MESSAGE FROM MR HAGEN

## MURRAY PARK SCHOOL

OUR MISSION: SUPPORTING STUDENTS IN GAINING A POSITIVE OUTLOOK,  
SHAPING THEIR FUTURES AND REACHING THEIR FULL POTENTIAL.

“PROUD TO BE HERE”

Dear Year 9 student,

This is an important time of year as you will need to make decisions about some of the courses you wish to successfully follow during the next two years at Murray Park. You will all study the core subjects of English, Mathematics, Science and PE. PSHE (which includes Citizenship/Religious Studies/Careers, Drugs and Sex Education) will also be covered in Key Stage 4. You will need to make some decisions about which other subjects you would like to study. This is your opportunity to select courses that interest you and in which you will be able to demonstrate skills and talents. You need to think about how you will rise to the challenge of the work required for each course and how each course is assessed.

The information you need to help you to make this decision is included in this booklet, it should be used alongside the Virtual Options Event which is now live on our website. In place of our usual face-to-face options event we are giving the opportunity for students and parents to book a time to discuss any course specific questions with Heads of Departments on Tuesday 2<sup>nd</sup> of February at our telephone question and answer evening. You will be given further information about subjects during live lessons over the coming weeks.

I do need to make you are aware that if very few students choose a particular subject [usually fewer than 10] then we will not be able to run that subject. Students are therefore asked to give two reserve choices for their options and ensure that forms are submitted by Friday 26<sup>th</sup> February. Take decisions about your reserve as importantly as your first choice. It is also pertinent to note that we do not routinely allow students to move options once year 10 has commenced, and never beyond the second week of term, so please think about your choices carefully to ensure courses are suited to you.

Please READ the information carefully, THINK about your skills and talents, ASK QUESTIONS of the staff who will teach the option subjects and BE ORGANISED to submit your online completed options form by Friday 26<sup>th</sup> February at the latest.

With best wishes,

Mr George Hagen  
Assistant Headteacher



# PROCESS EXPLAINED



During your live lessons speak to your teachers and experience the taster classes taking place. Your work in PSHE lessons is focussed on helping you make choices.



Book onto the Question and Answer evening on Tuesday 2<sup>nd</sup> February for any subjects you would like to find more information about. Booking is at [murrayparkschool.schoolcloud.com](http://murrayparkschool.schoolcloud.com).



Visit the Murray Park Virtual Options Event on our website. It has videos of all courses, as well as a talk from Mr Hagen about the options process.



Read the options booklet carefully for all courses to help you make your decision.



Submit your choices online via Options Online to indicate the subjects you would like to choose. Deadline: Friday 26<sup>th</sup> February.

EVENT	DETAILS	DATE
Options Q&A Evening.	An opportunity to book a conversation with subjects to ask any questions and hear more information from subject leaders.	Tuesday 2 <sup>nd</sup> Feb - Conducted via telephone.
Taster Lessons and Guidance.	Taster lessons will be taking place within usual timetabled lesson slots via live lessons. Options guidance is delivered during PSHE lessons.	Throughout January during live lessons.
Virtual Options Event.	Hosted on our website with an introduction talk and videos from all option choices. Instructions for booking on letter.	Available from now and throughout February.
Deadline for final decisions.	Submit choices via Options Online (instructions later in this pack).	Open now until Friday 26 <sup>th</sup> February.



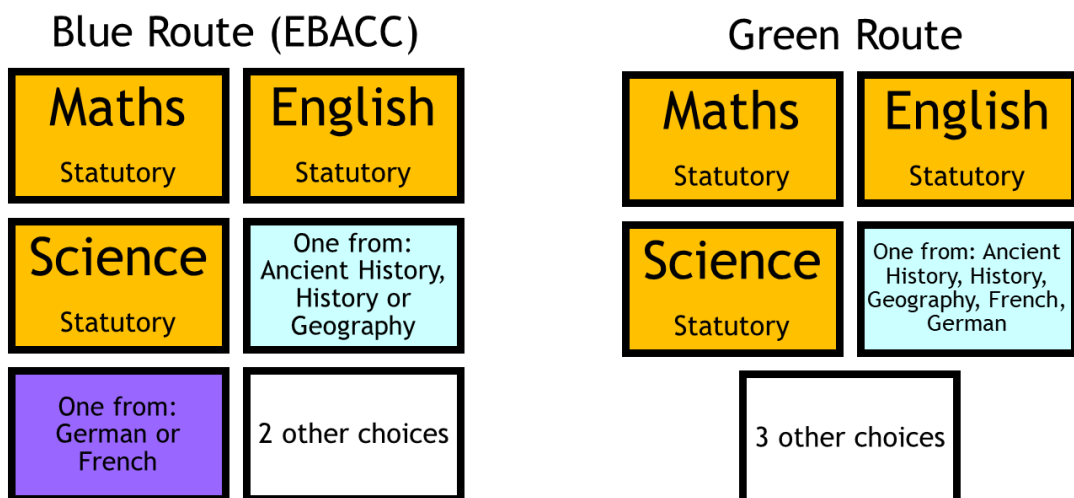
# KS4 CURRICULUM

At Murray Park School we are proud to offer a broad and balanced curriculum to our students. The number of subjects we offer our students to study at GCSE level exceeds most schools locally and nationally. All students in year 10 and year 11 will study:

- English Language GCSE and English Literature GCSE
- Mathematics - GCSE
- Science - GCSE (Triple Science can be chosen too)
- Core Physical Education (non-assessed)
- PSCHE (non-assessed)

We allocate students onto one of two routes for the options process - the Blue Route or the Green Route. In the Blue Route students choose a language alongside either Ancient History, History or Geography in order to achieve the English Baccalaureate, along with two other subject choices. In the Green Route students choose one subject from Ancient History, History, Geography or a language, and 3 other subject choices. The route each student has been allocated to is on the letter sent with this options pack.

The English Baccalaureate (EBACC.) was introduced by the government in 2011 as a suite of qualifications which will help support students in the future with further study and work. To achieve the EBACC students must achieve a grade 5-9 in English, Maths, 2 Science GCSEs, a Modern Foreign Language and History or Geography. Any student can study EBACC qualifications - all students on the Blue Route study for the EBACC and students on the Green Route can elect to study a language and a humanities subject, if they wish, to achieve the EBACC.



# SUBMITTING CHOICES

We ask option choices are submitted electronically, via Options Online. Students can access this via their school email account - details are below. Should you have any problems submitting options choices through this method please email [options@murraypark.derby.sch.uk](mailto:options@murraypark.derby.sch.uk).

## Selecting your option choice subjects



The Virtual Options Event, on our website, has a step-by-step video guide to submitting option choices using the online system.

Alternatively, written instructions are below:

1. Access options online - an email will be delivered to the students from [nonreply@sims.co.uk](mailto:nonreply@sims.co.uk). Students need to click on the link provided. (Students may need to check their spam box for this e-mail.)
2. Students will then be asked to sign in - we recommend using the Office 365 option with the school email. Once signed in students will need to enter the code provided in the registration email into the invitational code field.
3. Students need to verify the account by answering the security question.
4. Students are then required to log into the account to gain access to the active plan. Students should follow the help tips on screen and make course choices by selecting the subjects.
5. Select the subjects you wish to study from the options including your reserve choice. This can be done by clicking on each subject within each choice block. Subjects turn blue when selected. Click on a subject again to deselect it.
6. Click “save” when complete.

## Our criteria for allocating places on courses will be:

- i) Meeting special educational needs.
- ii) Appropriate ability level for the course selected and recognised talents in that subject.
- iii) A balanced choice of subjects.

**Students returning forms after the deadline of Friday 26<sup>th</sup> February will find that places on some courses are no longer available.**





# GCSE ANCIENT HISTORY



The Ancient History GCSE covers a broad spectrum of the ancient world. It takes in Ancient Persia (yes, they're the bad guys in 300), Ancient Greece, Ancient Rome and Ancient Britain too. You will study both significant periods as well as looking at shorter periods, but in more depth. The course will use sources translated from the ancient languages while also giving a flavour of Ancient Greek and Latin along the way. The study of Ancient History is unique as it also includes the study of the physical past through Archaeology. This will include the study of ancient buildings, statues, coins, weapons and many other things along the way.

## Course Type

GCSE

## Assessment Type:

Two written exams each comprising 50% of the total grade.

## Course Content:

- The Persian Empire, 559-465 BC
- Alexander the Great, 356-323BC
- The Foundations of Rome: From Kingship to Republic, 753-440BC
- Britannia: From Conquest to Province, AD43-84

## By the end of this course, you will be able to:

- Write extended answers confidently to get across your argument.
- Make substantiated judgements.
- Understand the world around you.
- Solve problems
- Work independently and as part of a group

## Careers:

- Historian
- Law
- Archivist
- Librarian
- Archaeology
- Journalism
- Teaching
- Civil Service

## Further Study:

- A level Ancient History
- Classical Studies
- A level History

Should you require any further information, please contact Mr Hyndman,  
Head of History [joseph.hyndman@murraypark.derby.sch.uk](mailto:joseph.hyndman@murraypark.derby.sch.uk)



# GCSE ART



In the GCSE Art course you will have the opportunity to study in a variety of artistic disciplines and processes to produce a make a range of outcomes. The course begins with an extended project based on Natural Forms. You will be taught how to draw from observation and learn through experimentation how to refine your work in a more personal way. You will learn to develop your own sense of creativity through the work you do, responding to given starting points in the way that suits you. By the end of the course you will have gained significant knowledge and creative skills to prepare you for any future creative pathway.

Course Type	Assessment Type:
GCSE	60% Coursework 40% Exam Project (no written exam)
Course Content:	
<ul style="list-style-type: none"> <li>• Skills Project 1- Structured experimental skills project - Natural forms</li> <li>• Skills Project 2 - Students' own choice project - Confectionary, Mechanical Forms, Identity</li> <li>• Extended Personal Project</li> <li>• Exam Project- Extended project working to an Exam Board starting point</li> </ul>	
By the end of this course, you will be able to:	
<ul style="list-style-type: none"> <li>• Work to a wide range of experimental art materials and processes.</li> <li>• Investigate, explore and refine your own independent ideas.</li> <li>• Research, analyse and be inspired by the work of others.</li> <li>• Create artwork in your own personal style.</li> </ul>	
Careers:	Further Study:
Freelance designer, Craftsperson, Costume Designer, Stylist, 3D Designer, Interior Design, Architect, Fashion Designer, Graphic designer, Fine Artist, Textiles Designer, Sculptor, Photographer, Arts administrator, Art Teacher, Teaching Assistant, Nursery Teacher, Art Historian, Toy Designer, Animator, Advertising Designer, Art Therapist, Glass Designer, Furniture Designer, Gallery Curator, Medical Artist, Art Technician, Jewellery Designer and many more...	Level 3 BTECs such as Art and Design/Photography/Fashion and Textiles/3D design. A Levels including Art, 3D Design or Product Design

*Please Note: Textiles and Art cannot both be selected by a student.*

Should you require any further information, please contact Mr Moore & Mrs Whittingham, Teachers of Art, [simon.moore@murraypark.derby.sch.uk](mailto:simon.moore@murraypark.derby.sch.uk) & [claire.whittingham@murraypark.derby.sch.uk](mailto:claire.whittingham@murraypark.derby.sch.uk)



# GCSE BUSINESS



If you would like to find out more about how businesses operate, how adverts make us purchase products or what makes the most successful businesses dominate the market - GCSE Business is probably for you. Business as a subject is relevant to all students, regardless of your chosen career path, because everyone either works or manages a business or an organisation so the knowledge we gain will be useful to you in the future. We focus on not only acquiring knowledge of business, but also learning how to make justified arguments too. By the end of the course you will have gained significant knowledge and skills to prepare you for the future.

## Course Type

GCSE

## Assessment Type:

100% Examination  
2 exams sat at the end of year 11

## Course Content:

- Entrepreneurs - What makes a successful business person?
- Marketing - How do businesses find out our needs and persuade us to buy their products?
- Finance - How does business maths help entrepreneurs keep their business successful?
- External environment - How does the wider-world impact on business activity?
- Human Resources - How do businesses manage their people?

## By the end of this course, you will be able to:

- Write extended answers confidently to get across your argument.
- Be in the Maths for Business Finance.
- Make judgements about a situation and can back them up with knowledge.
- Have an interest in, and enjoy learning about, the world around you.
- Understand, and regularly follow, business news.

## Careers:

- Entrepreneur/Business Owner
- General Management
- Marketing Manager
- Finance and Accounting
- Economics
- Retail Management
- Information Technology
- Sales Industry
- Human Resource Manager

## Further Study:

- Level 3 Business course at College, such as a BTEC or Cambridge Nationals.
- A Levels in Business, Finance or Economics.
- An apprenticeship in a business.





# WJEC LEVEL 1/2 CONSTRUCTION



You will:

- Gain a broad understanding of the construction industry and be able to study selected areas in depth
- Develop a knowledge of the range of occupations or professions in 'Construction'
- Develop skills, knowledge and understanding in construction and have an opportunity to apply learning in a practical and realistic way
- Understand the importance of Health & Safety in the workplace and beyond

## Course Type

Vocational

## Assessment Type:

Online Examination, Practical Coursework  
And online Planning Assessment

## Course Content:

- Safety and Security in Construction- Risks and safety measures, knowledge of H&S legislation and policies, best practice, H&S signage and accident reporting
- Developing Construction Projects- Practical based portfolio units related to skill aspects of: Bricklaying, Painting and Decorating and Plastering
- Planning Construction Projects- Job roles, materials/resource planning, work sequencing and sources of useful information

This course is delivered at Derby College. Students will have to travel to the college site from school ready for a 1:30 start. Each session will finish at 4.00pm. It will involve students being responsible for making their own way to Derby College and back home afterwards. Weekly travel expenses may be reimbursed if pupils retain their bus tickets and complete a claim form. Students will need to purchase their own protective footwear. They will also need to purchase overalls from the college.

## By the end of this course, you will be able to:

- Work safely and contribute to the overall safe running of a construction site environment
- Demonstrate a range of skills in construction based specialisms
- Identify, select and maintain suitable tools and keep a safe, tidy and organised work area
- Comprehensively plan a complete construction project taking into account all factors

## Careers:

- Plasterer
- Bricklayer
- Joiner
- Painter/Decorator
- Construction Manager
- Builder

## Further Study:

- Level 3 Diploma in Professional Construction Practice
- Apprenticeships

Should you require any further information, please contact Mr Cannell, Head of Engineering and Design, [stephen.cannell@murraypark.derby.sch.uk](mailto:stephen.cannell@murraypark.derby.sch.uk)



# GCSE COMPUTER SCIENCE



The world depends on computers. In this GCSE you will learn about how computers work, the networks they use and how programming can create solutions to everyday problems and future challenges. Computer Science is a practical subject where learners can apply the knowledge and skills learned in the classroom to real-world problems. It is an intensely creative subject that involves invention and excitement. This subject is considered the fourth Science and if you feel up to the challenge then this could be the subject for you!

## Course Type

GCSE

## Assessment Type:

100% examination sat at the end of year 11  
2 exam papers.

## Course Content:

- Computational thinking
- Data
- Networks
- Issues and impact
- Problem solving with programming

## By the end of this course, you will be able to:

- Understand and apply the fundamental principles and concepts of computer science, including abstraction, decomposition, logic, algorithms, and data representation.
- Analyse problems in computational terms through practical experience of solving such problems, including designing, writing and debugging programs.
- Think creatively, innovatively, analytically, logically and critically.
- Understand the components that make up digital systems and how they communicate with one another and with other systems.
- Understand the impact of digital technology on issues of privacy and cybersecurity.
- Apply mathematical skills relevant to computer science.

## Careers:

- Systems analyst
- Data Analyst
- Software engineer
- Games developer
- Forensic computer analyst
- IT consultant
- Web designer/developer
- Cyber crime specialist

## Further Study:

- Level 3 Computer Science course at College, such as a BTEC or Cambridge Nationals.
- A Levels in Computer Science or Information Technology.
- An apprenticeship in Information Technology.

Should you require any further information, please contact Mr Rossell Head of Computing, [stuart.rossell@murraypark.derby.sch.uk](mailto:stuart.rossell@murraypark.derby.sch.uk)



# GCSE DESIGN & TECHNOLOGY



GCSE Design & Technology enables students to design and make products with creativity and originality, using a range of materials and techniques.

Students will be required to follow an iterative design approach from identifying a design opportunity all the way through to evaluating the success of the product. Students will gain awareness and learn from wider influences on Design and Technology including historical, social, cultural, environmental and economic factors.

## Course Type

GCSE

## Assessment Type:

50% Examination  
50% Non-Exam Assessment

## Course Content:

- Identifying & investigating design possibilities
- Producing a design brief and specification
- Generating design ideas
- Developing design ideas
- Realising design ideas
- Analysing and evaluating

## By the end of this course, you will be able to:

- Identify a range of design possibilities (problems) within the world we live in
- Carry out relevant and purposeful research to allow for innovation when designing
- Use the iterative design process to create innovative ideas
- Plan and undertake the manufacture of high quality prototypes
- Make good quality judgments based on a wide variety of design principles

## Careers:

- Product design
- Engineering
- Architecture
- Entrepreneur
- Inventor
- Teaching
- Furniture designer
- Joinery
- Material Scientist

## Further Study:

- A Level Design & Technology - Product design
- Apprenticeship in construction/design



# BTEC DIGITAL I.T.



The Digital Information Technology course will build on the skills taught at Key Stage 3 where you have learned about computer systems and software applications. You will learn how effective design and planning has a major impact on the user experience and will have the chance to create your own user interface for a digital system. You will also learn about the differences between information and data in addition to how an organisation may use and process data to give meaningful information through the creation of your own data dashboard. You will gain advanced IT skills that will equip you well for the modern working world ahead of you.

## Course Type

Vocational

## Assessment Type:

2 Units of coursework - 60% of overall mark  
1 Unit of Examination - 40% - of overall mark

## Course Content:

- Investigate user interface design for individuals and organisations
- Use project planning techniques to plan and design a user interface
- Develop and review a user interface
- Investigate the role and impact of using data on individuals and organisations
- Create a dashboard using data manipulation tools
- Draw conclusions and review data presentation methods.

## By the end of this course, you will be able to:

- Develop key skills that prove your aptitude in digital information technology.
- Understand processes that underpin effective ways of working, such as project planning, the iterative design process, cyber security, virtual teams and legal of conduct.
- Recall knowledge that underpins effective use of skills, processes and attitudes in the sector, such as how different user interfaces meet user needs, how organisations collect and use data to make decisions, virtual workplaces, cyber security and legal and ethical issues.

## Careers:

- Data Analyst
- Network Manager
- Network Security Engineer
- IT Consultant
- ICT Technician

## Further Study:

- A Levels as preparation for entry to higher education in a range of subjects
- Vocational qualification at Level 3, such as a BTEC National in IT, which prepares learners to enter employment or apprenticeships, or to move on to higher education by studying a degree in the digital sector.

Should you require any further information, please contact Mr Rossell, Head of Computing, [stuart.rossell@murraypark.derby.sch.uk](mailto:stuart.rossell@murraypark.derby.sch.uk)





# GCSE DRAMA



Have you ever thought, how is a show put together and rehearsed? Do you love to stand up and speak or just wish you had the confidence to? If so, GCSE Drama is probably for you. GCSE Drama is a wonderful subject where students are able to work together and, individually, in a creative manner to create performance work. You will do things you'll have never considered in the past. You'll grow in confidence, as a performer and as yourself. If it's possible to do something practically, we will. As a part of GCSE Drama you will be encouraged to experiment creatively and will be able to try using technical elements during lessons.

## Course Type

GCSE

## Assessment Type:

With one written exam and two Performance pieces with written coursework.

## Course Content:

GCSE Drama is broken down into three main units.

- C1 - A written exam which is broken down into three separate parts.
  - **Section A** - Roles and responsibilities in theatre and stage spaces and stage directions
  - **Section B** - Study of a set text - *Around the World in 80 Days*
  - **Section C** - Analysis of a live theatre performance
- C2 - A Devising unit where students work collaboratively with members of their class to create and perform their own mini play. This is accompanied by a small amount of written coursework that documents and explains the creation process.
- C3 - Texts in practise where students rehearse and perform two extracts from a play.

## By the end of this course, you will be able to:

- Work collaboratively with others.
- Understand character motivations and objectives.
- Be able to confidently stand up and speak in front of others.
- Write extended answers confidently explaining and analysing theatrical choices and performances.

## Careers:

- Actor
- Lawyer
- Teacher
- Lighting designer
- Set designer
- Costume designer

## Further Study:

- A level Theatre Studies and Drama
- BTEC Acting/ Musical Theatre / Technical Theatre
- Any degree in Theatre and acting or Technical Theatre.
- Foundation degree in Acting.





# CAMBRIDGE NATIONAL ENGINEERING



Engineering manufacture is a discipline of engineering dealing with different manufacturing practices and processes using machines, tools and equipment that turn raw materials to new products. The Cambridge Nationals in Engineering Manufacture is aimed at learners who wish to study the processes involved in manufacturing new engineered products. Students are provided with the knowledge and skills required to operate manufacturing tools and equipment used to make products from the requirements of a design specification. Learners will develop their understanding of the processes and systems required to transfer a design concept into a product.

## Course Type

Vocational

## Assessment Type:

25% Examination  
75% Coursework Assignments

## Course Content:

- Engineering Materials, Processes and Production (Examined Unit)
- Preparing and Planning for Manufacture
- Computer Aided Manufacturing
- Quality Control of Engineered Products

## By the end of this course, you will be able to:

- Read working drawings using knowledge of standard engineering drawing practice
- Produce clear and logical plans for manufacturing in small and large scale operations
- Evaluate the quality and accuracy of completed products
- Set up and use computer aided manufacturing equipment using suitable drawing files
- Implement formal quality control procedures within a manufacturing operation

## Careers:

- Engineering Craftsperson
- Manufacturing Technician
- Planning Engineer
- Quality Control Engineer
- Production/Manufacturing Manager
- Technical Author
- Supply Chain Engineer

## Further Study:

- Cambridge Technical in Engineering
- A Level Engineering
- Engineering Apprenticeship

Should you require any further information, please contact Mr Cannell, Head of Engineering and Design, [stephen.cannell@murraypark.derby.sch.uk](mailto:stephen.cannell@murraypark.derby.sch.uk)



# GCSE FRENCH



You will be adding an international dimension to your GCSE subjects by studying GCSE French. You will develop your knowledge and understanding of the language including learning vocabulary and grammar rules as well as gaining more cultural knowledge of French-speaking countries. You will also develop better memory and literacy skills and improve your ability to understand spoken and written French as well as being able to communicate effectively in speaking and writing. During the GCSE course you will be able to develop and practise valuable, transferable skills for the future and, as a result, make yourself more employable as well as widening your choice of future opportunities.

## Course Type

GCSE

## Assessment Type:

4 exams sat at the end of Y11 (Listening, Speaking, Reading and Writing)

## Course Content:

The course in French covers three main themes:

- 1: Identity and culture
- 2: Local, national, international and global areas of interest
- 3: Current and future study and employment

## By the end of this course, you will be able to:

- Communicate with a person from a French-speaking country and have a conversation with them on a wide range of topics.
- Understand extended pieces of written French, including poems and novels.
- Write a letter/email/blog in French.
- Discuss cultural events that take place in French-speaking countries.

## Careers:

- Translator/interpreter.
- Journalism.
- International law.
- Travel and tourism
- Medicine
- Teaching
- International companies regularly require their employees to speak two languages to allow them to work in different countries.

## Further Study:

- A level French



# GCSE FOOD PREPARATION AND NUTRITION



Food Preparation and Nutrition GCSE will help learners to discover the essentials of the food science behind cooking and bring learning to life.

**Exciting and contemporary** - It's designed to motivate students to develop the high level of knowledge, understanding and skills to cook and apply the principles of food science, nutrition and healthy eating.

## Course Type

GCSE

## Assessment Type:

50% Examination  
15% NEA (Food Science)  
35% NEA (Food Preparation)

## Course Content:

- Diet and Nutrition
- Food provenance and food choices
- Food Science
- Food Safety
- Food preparation and cookery skills

## By the end of this course, you will be able to:

- Understand the importance of a good diet in relation to our health
- Be able to plan, prepare, cook and serve balanced meals
- Cook confidently a range of technical dishes. Including breads, pastries, sauces, meat and vegetable preparation.
- Understand why we should buy and eat ethically sourced ingredients

## Careers:

- Chef/food preparation
- Dietician
- Food product development
- Environmental health officer
- Food science

*This course links brilliantly with PE, Health and Social Care and Biology. If you have interests in these fields Food Preparation will help.*

## Further Study:

- Level 3 Catering course at College, such as a BTEC or Cambridge Nationals.
- Many degree level courses linking to food science and manufacture
- Dietetics degree



# GCSE GEOGRAPHY



Geography helps students to make sense of the complex and ever changing world around us. We explore topical issues and examine how the physical and human world is being shaped.

A GCSE in geography is excellent preparation for a career in most industries. Geography is an education for life. Employers and universities value the broad range of transferable skills that geography delivers. It is a subject that offers you a huge range of skills and opportunities and is always very attractive to prospective employers.

## Course Type

GCSE

## Assessment Type:

100% Examination  
3 papers all sat at the end of the course

## Course Content:

- Natural Hazards
- The Living World (Deserts)
- Physical Landscape of the UK (Rivers and Coasts)
- Urban issues
- Changing Economic World
- Resource management (Food)
- Global issues
- Fieldwork

## By the end of this course, you will be able to:

- Confidently express your point of view, both verbally and written
- Analyse key sources of information (maps, Graphs, images, news articles, documentaries)
- Discuss important global issues such as climate change and migration
- Have developed a great knowledge and understanding of human and physical Geography

## Careers:

- Global business
- Tourism and recreation
- Environmental management
- Teaching
- Agriculture
- Environmental sustainability
- Economics
- Sustainable business management
- Town and city planning
- Armed forces

## Further Study:

- A Level Geography, Geology or Environmental Science
- Apprenticeships for the environment agency, Severn Trent

Should you require any further information, please contact Mr Heaney, Head of Geography, [thomas.heaney@murraypark.derby.sch.uk](mailto:thomas.heaney@murraypark.derby.sch.uk)



# GCSE GERMAN



You will be adding an international dimension to your GCSE subjects by studying GCSE German. You will develop your knowledge and understanding of the language including learning vocabulary and grammar rules as well as gaining more cultural knowledge of German-speaking countries. You will also develop better memory and literacy skills and improve your ability to understand spoken and written German as well as being able to communicate effectively in speaking and writing. During the GCSE course you will be able to develop and practise valuable, transferable skills for the future and, as a result, make yourself more employable as well as widening your choice of future opportunities.

## Course Type

GCSE

## Assessment Type:

4 exams sat at the end of Y11(Listening, Speaking, Reading and Writing)

## Course Content:

The course in German covers three main themes:

- 1: Identity and culture
- 2: Local, national, international and global areas of interest
- 3: Current and future study and employment

## By the end of this course, you will be able to:

- Communicate with a person from a German-speaking country and have a conversation with them on a wide range of topics.
- Understand extended pieces of written German, including poems and novels.
- Write a letter/email/blog in German.
- Discuss cultural events that take place in German-speaking countries.

## Careers:

- Translator/interpreter.
- Journalism.
- International law.
- Travel and tourism
- Medicine
- Teaching
- International companies regularly require their employees to speak two languages to allow them to work in different countries.

## Further Study:

- A level German





# AS LEVEL GOVERNMENT & POLITICS



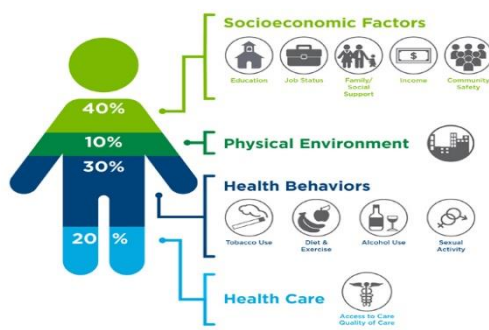
The AS politics course is designed to help students make sense of an often chaotic political landscape. Politics is a living, breathing subject in which the textbooks don't always explain political reality. This is a fantastic opportunity for students who want to challenge themselves by studying an AS level. You can gain an extra qualification that demonstrates your ability to work at a higher level. This is an AS Level so does require a large amount of written work and as such students must be prepared to complete this kind of work. Good literacy skills are important. There will be a minimum standard that you must be working towards in order to take the course.

Course Type	Assessment Type:
AS Level	Paper 1 - 1 hour 45 minutes 50% Paper 2 - 1 hour 45 minutes 50%
Course Content:	
Component 1: UK Politics Component 2: UK Government This course will examine:	
<ul style="list-style-type: none"><li>• Role of democracy</li><li>• Political parties</li><li>• Pressure groups</li><li>• The Constitution</li><li>• The Judiciary</li><li>• Britain's relationship with Europe</li><li>• Electoral systems</li></ul>	
By the end of this course, you will be able to:	
<ul style="list-style-type: none"><li>• Write extended answers confidently to get across your argument.</li><li>• Make substantiated judgements.</li><li>• Understand the UK Political system.</li><li>• Solve problems</li><li>• Work independently and as part of a group</li></ul>	
Careers:	Further Study:
<ul style="list-style-type: none"><li>• Politician</li><li>• Law</li><li>• Journalism</li><li>• Teaching</li><li>• Civil Service</li><li>• Public Affairs</li></ul>	<ul style="list-style-type: none"><li>• A level Government and Politics</li><li>• University (An A in AS Politics is worth 20 UCAS points)</li></ul>



# BTEC HEALTH AND SOCIAL CARE

## What Goes Into Your Health?



Source: Institute for Clinical Systems Improvement, Going Beyond Clinical Work: Solving Complex Problems (October 2014)

The Bridgeman Group

This qualification is to engage and excite young learners who want an introduction to life and work within the health and social care sector. This is a high quality qualification that will equip students with applied knowledge and real life practical skills set in the Health and Social care industry.

## Course Type

L1 / L2 Vocational

## Assessment Type:

External 2 hour exam  
Coursework tasks, externally moderated

## Course Content:

- 1 Human Lifespan Development
- 2 Health and Social Care Services and Value
- 3 Health and Wellbeing

## By the end of this course, you will be able to:

- Development of key skills that prove your aptitude in health and social care such as interpreting data to assess an individual's health
- Process that underpins effective ways of working in health and social care, such as designing a plan to improve an individual's health and wellbeing
- Attitudes that are considered most important in health and social care, including the care values that are vitally important in the sector, and the opportunity to practise applying them
- knowledge that underpins effective use of skills, process and attitudes in the sector such as human growth and development, health and social care services, and factors affecting people's health and wellbeing.

## Careers:

- Nurse
- Midwife
- Social worker
- Health care assistant
- Dentist
- Nursery nurse
- Teacher

## Further Study:

- Level 3 Health and Social Care at College, such as a BTEC or Cambridge Nationals.
- A Levels Health and Social Care.
- An apprenticeship in Health and Social Care.

Should you require any further information, please contact Mr Hutchison, Head of Vocational, [dale.hutchinson@murraypark.derby.sch.uk](mailto:dale.hutchinson@murraypark.derby.sch.uk)



# GCSE HISTORY



History GCSE is a fantastic choice for any student that has an interest in History and who has enjoyed studying it in KS3. The study of History allows us to understand the world we live in and the GCSE allows us to study a wide range of exciting and interesting topics. History does require a large amount of written work and as such students must be prepared to complete this kind of work. Good literacy skills are important. Having a good memory helps prepare for the exams in which you should be able to process your knowledge in answering questions. History is a well respected subject and provides you a solid foundation for a multitude of careers.

## Course Type

GCSE 9-1

## Assessment Type:

Each unit is assessed by a written exam in Year 11 between 1 hour 15 and 1 hour 45.

## Course Content:

Unit 1 - Crime and Punishment in Britain 1000-present day.

Unit 2 - Early Elizabethan England 1558-88

Unit 3 - Superpower relations and the Cold War, 1941-91

Unit 4 - Weimar and Nazi Germany, 1918-39

## By the end of this course, you will be able to:

- Write extended answers confidently to get across your argument.
- Make substantiated judgements.
- Understand the world around you.
- Solve problems.
- Work independently and as part of a group.

## Careers:

- Historian
- Law
- Archivist
- Librarian
- Archaeology
- Journalism
- Teaching
- Civil Service

## Further Study:

- A level History
- A level Government and Politics



# GCSE MUSIC



If you have a love of music then GCSE music is for you. During the course you will have the opportunity to extend your knowledge of music and learn about the connections between all styles of music, no matter when or where they were written.

You will learn about composing music, whether it's composing a style of music that you are comfortable with or composing in a new style. You will also have the opportunity to perform on your own as well as in groups. Instrument lessons would be an advantage, these can be arranged through the school.

## Course Type

GCSE

## Assessment Type:

- Written exam at the end of Y11 (40%)
- Composition (30%) and Performance (30%)

## Course Content:

- Musical forms and devices
- Music for ensemble
- Music for Film
- Popular music
- 2 prepared extracts of music ('Badinerie' by Bach and 'Africa' by Toto).

## By the end of this course, you will be able to:

- Identify and confidently talk about the different features of music, through the study of the prepared extracts and areas of study.
- Write about the music you are listening to and discuss how the use of the musical elements adds to the atmosphere and direction of the music.
- Compose 2 pieces of music, 1 to a brief given by the exam board and 1 written using a brief of your own.
- Perform a solo on your chosen instrument, confidently and accurately. With guidance from your instrument tutor, you will be performing pieces that suit your ability and taste.
- Perform in an ensemble on your chosen instrument.

## Careers:

- Private or school music teacher
- Music therapist
- Performer
- Composer
- Television production assistant
- Programme researcher
- Arts administrator

## Further Study:

- A Level in Music/Music Technology/Performing Arts
- BTEC/NVQ
- Apprenticeship (Music publishing/Theatre/Radio/Community Arts)

Should you require any further information, please contact Eleanor Byrne,  
Teacher of Music, [eleanor.byrne@murraypark.derby.sch.uk](mailto:eleanor.byrne@murraypark.derby.sch.uk)



# GCSE PHOTOGRAPHY



Evie - Year 11

Photography is an art GCSE. Students studying photography learn how to create and manipulate digital images. More importantly arts subjects encourage self-expression and creativity and help build student confidence as well as a sense of individual identity. Students have the freedom to develop a project from a single starting point learning to experiment and explore their ideas to create a final outcome.

## Course Type

GCSE

## Assessment Type:

Portfolio - 60% / Externally Set Task 40%

## Course Content:

Topics covered include:

- Portraiture
- Landscape photography
- Still life photography
- Documentary photography
- Photo journalism
- Fine art photography
- Photography involving a moving image
- Composition
- Camera techniques
- Image manipulation (Photoshop)
- History of photography

Students will work to develop the following skills:

- Critical and reflective thinking
- Creativity
- Resilience
- Planning
- Researching and planning

## By the end of this course, you will be able to:

- Produce images using digital technology and traditional methods.
- Develop and produce static or moving images.
- Additional areas of study can include:
- portraiture, installation, photo-journalism, moving image: film, video and animation and fashion photography.

## Careers:

Industries include but are not limited to: Photography, Graphic Design, Advertising, Visual Media, Publishing, Social Media.

## Further Study:

- Art A Level
- BTEC
- Degree

Should you require any further information, please contact Mr Gardner, Teacher of Photography, [richard.gardner@murraypark.derby.sch.uk](mailto:richard.gardner@murraypark.derby.sch.uk)





# GCSE PHYSICAL EDUCATION



If you would like to find out how the body moves, adapts and reacts to exercise and how we can develop and improve our bodies linked to social and cultural influences this course is for you. GCSE PE goes into the theory and practical aspects of movement and performance. We focus on not only acquiring knowledge of the body, but also learning how to apply this knowledge in both a written and demonstration manner. By the end of the course you will have gained significant knowledge and skills to prepare you for the future.

## Course Type

GCSE

## Assessment Type:

X2 Written examinations  
X1 Externally moderated practical assessment  
Practical performance assessment

## Course Content:

- Applied Anatomy and Physiology.
- Movement analysis.
- Physical training and the use of data.
- Health, fitness and well being.
- Sport psychology.
- Socio-cultural influences.
- Practical performance in isolation and in a competitive and formal situation.
- Performance and demonstration of a personal exercise plan

## By the end of this course, you will be able to:

- Complete extended answers confidently to demonstrate you knowledge.
- Understand how and prepare physical training, create and analyse data.
- Make judgements about a scenario and can back them up with knowledge.
- Have an interest in, and enjoy learning about the world of Sport and PE.
- Understand, and regularly follow, issues related to Sport and PE.

## Careers:

- Teacher
- Fitness instructor
- Physiotherapy
- Sports data analysis
- Diet and nutrition

## Further Study:

- Level 3 Sport course at College, such as a BTEC or Cambridge Nationals.
- A Levels in Physical Education.
- An apprenticeship in Sport.

Should you require any further information, please contact Mr Hutchison, Head of Physical Education, [dale.hutchinson@murraypark.derby.sch.uk](mailto:dale.hutchinson@murraypark.derby.sch.uk)



# BTEC SPORT (PHYSICAL EDUCATION)



If you would like to find out how the body moves, adapts and reacts to exercise and how we can develop and improve our bodies through exercise and training then this course is for you. BTEC Sport goes into the theory and practical aspects of performance, training and leading. We focus on not only acquiring knowledge but also learning how to apply this knowledge in both a written and practical manner. By the end of the course you will have gained significant knowledge and skills to prepare you for Level 3 or A level courses.

Course Type	Assessment Type:
Vocational Level 1/2	External Exam based of Fitness for sport and exercise. Internal coursework tasks, externally moderated.
Course Content:	
Unit 1 Fitness for Sport and exercise Unit 2 Practical Sport Unit 3 Health and Fitness Unit 4 Leading a Sports activity	
By the end of this course, you will be able to:	
<ul style="list-style-type: none"> <li>• Complete extended answers confidently to demonstrate you knowledge.</li> <li>• Understand how and prepare physical training, create and analyse data.</li> <li>• Make judgements about a scenario and can back them up with knowledge.</li> <li>• Have an interest in, and enjoy learning about the world of Sport and PE.</li> <li>• Understand, and regularly follow, issues related to Sport and PE.</li> </ul>	
Careers:	Further Study:
<ul style="list-style-type: none"> <li>• Teacher</li> <li>• Fitness instructor</li> <li>• Physiotherapy</li> <li>• Sports data analysis</li> <li>• Diet and nutrition</li> </ul>	<ul style="list-style-type: none"> <li>• Level 3 Sport course at College, such as a BTEC or Cambridge Nationals.</li> <li>• A Levels in Physical Education.</li> <li>• An apprenticeship in Sport.</li> </ul>



# GCSE RELIGIOUS STUDIES



Religious studies is an exciting subject that enables us to understand better the society in which we live and the wider world of which we are a part. In Religious Studies lessons you will learn strong reasoning, writing and critical thinking skills which are valued by all employers. You will take part in lively debates where you will learn about the views of others whilst also expressing your own opinions on the issues studied. Religious Studies develops key skills for any career that you choose to pursue. We look forward to welcoming you to your GCSE studies! Take a look at this video and see how Religious Studies could help your future.

<https://www.youtube.com/watch?v=jQTMETwqckKs>

## Course Type

GCSE

## Assessment Type:

100% Examination  
2 exams sat at the end of Year 11

## Course Content:

- Beliefs, teachings and practices in Christianity and Islam
- Relationships and families
- The origins of the universe and how humans use the environment
- Crime and punishment
- Human rights and social justice

## By the end of this course, you will be able to:

- Write extended answers confidently and express your own points of view.
- Learn about the views of others and understand why people have different opinions.
- Confidently take part in class debates and discussions.
- Understand and learn about local and world issues.
- Develop your listening, reading, writing and speaking skills which are vital in the world of work.

## Careers:

Knowledge of other cultures and world religious beliefs can be useful in many jobs where you are working with the public or communities. These include careers in law, medicine, counselling and social services, marketing, sales and advertising, catering and hospitality, leisure, sport and tourism, retail sales and customer services, education and training, nursing and service sector roles.

## Further Study:

You could go on to study A-Level Religious Studies. There is a range of vocational qualifications linked to religious studies, including, travel and tourism, health and social care, childcare, uniformed public services and legal studies. There are apprenticeships associated with religious studies such as, leisure, travel and tourism and the arts, media and publishing.



# GCSE TEXTILES



In GCSE Textiles course you will have the opportunity to study in a variety of textiles disciplines and make a range of outcomes. The course begins with short guided projects to ensure you understand how to meet all the assessment objectives and develop the appropriate level of skill. As you become more confident and independent you will have the chance to develop your work in a more personal way. You will develop your own sense of creativity through the work you do, responding to briefs in the way that suits you. Regardless of your career path, Textiles will teach you independence, creativity, time-management, and craftsmanship- transferable skills for any job.

## Course Type

GCSE

## Assessment Type:

60% Coursework  
40% Exam Project (no written exam)

## Course Content:

- Skills Project 1- Under the Microscope- hand and machine decorative techniques
- Skills Project 2- Flora and Botany- Printmaking
- Skills Project 3- The Built World- Fabric manipulation and Constructed Textiles
- Personal Study- Extended Project working to your own choice of theme
- Exam Project- Extended project working to an Exam Board brief

## By the end of this course, you will be able to:

- Work to a range of inspirational themes, exploring the world around you.
- Investigate, explore and refine your own independent ideas.
- Work in a wide range of hand and machine techniques creatively and with craftsmanship.
- Explore, make judgements, and be inspired by the work of others.
- Create artwork in your own personal style.

## Careers:

Freelance designer, Craftsperson, Visual Merchandiser, Fashion Buyer, Trend Predictor, Journalist, Costume Designer, Stylist, 3D Designer, Interior Design, Fashion Designer, Fine Artist, Textiles Designer, Surface Pattern Designer, Sculptor, Art Teacher, Teaching Assistant, Nursery Teacher, Art Historian, Toy Designer, Animator, Advertising Designer, Art Therapist, Glass Designer, Furniture Designer, Museum Curator, and many, many more...

## Further Study:

- Level 3 BTECs such as Art and Design or Fashion and Textiles.
- A Levels including Textiles, Art and Design, Fine Art or Product Design
- Creative Apprenticeships including Fashion and Merchandising, Tailoring, or Art Therapy

*Please Note: Textiles and Art cannot both be selected by a student.*

Should you require any further information, please contact Miss Casey,  
Teacher of Textiles, [anna.casey@murraypark.derby.sch.uk](mailto:anna.casey@murraypark.derby.sch.uk)



# GCSE TRIPLE SCIENCE



All students study Science and at GCSE. Triple Science allows students to study 3 separate GCSE subjects - Biology, Physics and Chemistry. Subjects will be taught in discrete lessons for each Science discipline. Triple science has been championed by the government and industry for the way it prepares students for the world of STEM employment.

Practical work is the heart of science. By carrying out carefully considered practical work, understanding of key scientific concepts can be explored.

## Course Type

The Course is a GCSE course with 3 separate grades awarded.

## Assessment Type:

Six Written examinations : 1 hour 45 minutes each  
Foundation and Higher Tier available

## Course Content:

- In GCSE Biology pupils have the opportunity to develop their understanding of cells, infection, bioenergetics, homeostasis, inheritance and ecology.
- In GCSE Chemistry section pupils have the opportunity to develop the understanding of atomic structure, bonding, chemical changes and reactions, and the atmosphere.
- In GCSE Physics sections pupils have the opportunity to develop the understanding of energy, electricity, radiation, space and waves.

## By the end of this course, you will be able to:

- Identify key content of concepts in Science
- Describe, explain and evaluate different Science concepts and scenarios
- Write a Scientific investigation
- Analyse data
- Evaluate methods/data

## Careers:

Agriculture, construction, engineering, energy & utility, food/nutrition industry, medicine & health care, police & emergencies, science research, sport & fitness

## Further Study:

Suitable for progression to AS/A2 in Chemistry, Physics and Biology if pupils achieve a grade 6 or above and for University Science/Engineering qualification post-16





# FREQUENTLY ASKED QUESTIONS

## ***What is the difference between GCSEs and Vocational courses?***

A GCSE course is a traditional qualification, usually assessed through 100% examination. Vocational qualifications are assessed through a mixture of exams and coursework. Both qualifications are of equal difficulty but the nature of coursework in vocational qualifications may be more suitable for some students.

## ***Can I swap to a different choice after submitting?***

The deadline for option choices is Friday 26<sup>th</sup> February. After this date we cannot guarantee any requested swaps of choices. Once courses have commenced in September 2021 we strongly discourage students from swapping option choices due to the amount of content covered in the initial weeks of courses. We never allow students to swap choices beyond the second week of year 10.

## ***Are all subjects marketed guaranteed to run?***

We rely on student numbers for courses to run. We would not normally run a course that attracts student numbers below 10. Students should ensure they make a reserve choice because of this.

## ***Are any options easier than others?***

All subjects are of equal academic difficulty so subject choices should not be made because of the perceived difficulty of a subject compared to another.

## ***Where can I get further guidance?***

Should students require any further support with making their options choices, please email [options@murraypark.derby.sch.uk](mailto:options@murraypark.derby.sch.uk).

## ***What is the EBACC?***

The English Baccalaureate (EBacc.) was introduced by the government in 2011. To achieve the EBacc students must achieve a 'good grade' (5-9) in English, Maths, 2 Science GCSEs, a Modern Foreign Language and History, Ancient History or Geography.

