

SIXTH FORM AT THE KING EDWARD VI SCHOOL



**MINI GUIDE
2023/24**

www.sixthformkevi.the3rivers.net

CONTENTS

Student's foreword	04
About King Edward's	06
Our results	07
Destinations	07
Support	08
Sixth Form Journey	10
The curriculum	12
Enrichment	14
Personal development	15
Getting here	16
Entry criteria	18
Courses	20
How to apply	22

STUDENT'S FOREWORD

Hello and welcome to the KEVI Sixth Form

Whether you are a new prospective student, or looking to continue your KEVI journey from lower school, we are delighted that you are considering our Sixth Form for the next step of your academic journey. One of the joys of becoming a Sixth Form student is the newfound sense of independence and autonomy that comes with being a trusted, older member of the school. Whilst you will pick three or four subjects to study in depth, in your free periods you will get the chance to enjoy our variety of study spaces, from silent working in our well-equipped library, to our social spaces and subsidised cafe (we have waffles!). The KEVI Sixth Form experience is highly holistic; you are encouraged not only to dedicate yourself to your studies, but also to dive into the vast array of enrichment events and extracurricular activities we offer. From a highly active music and drama department, hugely successful sports and debating teams, to a fully equipped gym and dedicated pastoral team, our

school is designed to ensure your final two years in state education are as enriching and rewarding as possible. Despite our reputation for academic excellence, we find that KEVI students' prevailing memories of our school are not just sitting in classrooms, but of a welcoming atmosphere, dedicated staff, excellent facilities and unparalleled opportunities.

We hope you enjoy it as much as we have.

The Senior Students - Alice Hepton, Beth Marriott, Chris Johnstone and Finlay Evans

**“ WE HAVE HAD
THE PRIVILEGE
OF DIVERSE
OPPORTUNITIES
AND EXPERIENCES
AT OUR SCHOOL.”**



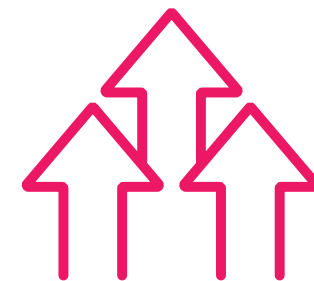
ABOUT KING EDWARD'S

We have a long and successful record of academic success and are proud of our student's achievements, with many gaining the highest grades. Moreover, our truly inclusive Sixth Form allows students to achieve far greater outcomes than their GCSE performance would suggest. From their individual starting points, students in our Sixth Form make rapid and sustained progress.

Decisions about your Post 16 future will define your future, whether Higher Education, training or employment. Our inclusive Sixth Form aims to celebrate and support diverse individual accomplishments with a tailor-made experience.



OUR RESULTS



Sixth Form at King Edward's produces consistently high academic outcomes which have placed highly in regional and national performance tables.

AVERAGE GRADE: B

A*A GRADES 24.6%

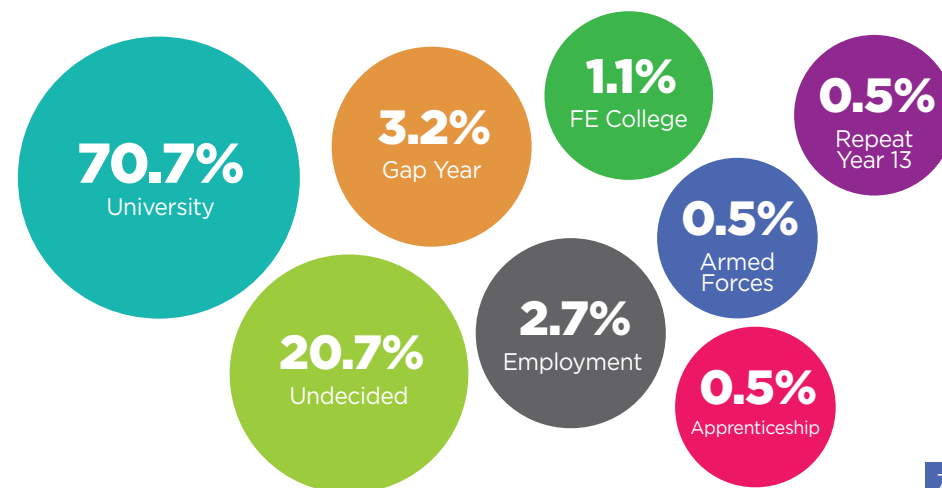
A*B GRADES 62.7%

A*E GRADES 98.3%



DESTINATIONS

Our Year 13 students of 2021/2022 achieved some outstanding results and have gone on to do some amazing things:



SUPPORT

Students are supported by an experienced Sixth Form team of Year Leaders and Mentors, as well as expert teaching staff at King Edward's. The relationships that students create with one another and their staff are a cornerstone of the Post 16 experience at King Edward's. Staff and students work together to ensure each and every student can fulfil their potential.

We also have an array of pastoral and wellbeing assistance available to our students who are supported by an in-school Counselling service and Chaplain (wellbeing). Our expert Access team provides individual and personalised support for students with Special Educational Needs and Disabilities. To support all of our staff and students we have strong partnerships with a number of external organisations to enhance the safety and wellbeing of our students.

At Sixth Form we continue to work hard to create an environment that allows all students to thrive and achieve. Each student is encouraged to achieve their own personal goals by the network of support in place. We are proud to be recognised for our excellent careers advice and guidance. We have been awarded the Quality in Careers Standard, a national award recognising our commitment to, and delivery of, quality career guidance. Our students are supported and encouraged to aspire to a broad and varied range of Post 18 destinations.

Financial support is available to students in Post 16 in the form of the 16-19 Bursary. This is a means tested allowance that students will need to apply for once they are enrolled.

SCAN ME

A large photograph of a modern, multi-story building with a grey and red facade. Two students, a girl and a boy, are walking on a paved path in front of the building. The girl is carrying a blue folder. The boy is wearing a backpack. A sign on the building reads 'Advanced Study Centre' with an arrow pointing right. The scene is brightly lit, suggesting a sunny day.

**“ WE HAVE
DEDICATED SIXTH
FORM SPACES;
CAFE VI AND
THE ADVANCED
STUDY CENTRE”**

SIXTH FORM JOURNEY

YEAR 12

Visit universities and become inspired and informed

Support the school's open evenings

Learn new study habits and become more independent

Check out the range of activities and options for enrichment

Confirm your choices and your place at Sixth Form at KEVI

Update your Unifrog profile

Complete transition activities

Attend and react to advice given in assemblies about the options available to you

Attend a careers interview

Secure work experience

Create Speakers4Schools account

Enjoy a drink in Cafe VI

Apply to be a Senior Student

Support King Edward's and volunteer to help in lower school

Apply for university through UCAS or alternative Post 18 courses

YEAR 13

Confirm and accept your future pathways offer

Revise for and complete your Year 13 mock exams

Complete and send your UCAS application and polish your CV

Launch your globalbridge profile to support next steps

Refine and perfect your revision techniques

Interview to progress to Year 13

Reflect on your journey so far

Revise and complete your Year 12 mock exams

Join the Alumni

Revise for and sit your exams

Celebrate your achievements at Celebration Evening and Leavers Dinner

Keep in touch

- Start a degree-level apprenticeship
- Go to university and get a degree
- Take a gap year and travel the world
- Go into full-time employment

THE CURRICULUM

We offer one of the largest selection of A Level/Level 3 courses in Northumberland. The curriculum is organised into subject areas. Our curriculum offer is one of high academic challenge and rigour. All Post 16 students must study a minimum of three full A Level (or equivalent) courses. Due to the academic nature of the curriculum students must satisfy the entry requirements for each subject. In an attempt to further personalise the curriculum, different students will follow bespoke curriculum pathways for them, based on their prior academic attainment:

- Students with an Average Point Score (APS) of lower than 6 - should choose three subjects from the four option pools.
- Students with an Average Point Score (APS) between 6 and 8 - should choose three full A Level/ equivalent plus Core Maths or EPQ or AS French/AS Spanish
- Students with an Average Point Score (APS) of 8 or more - should choose four subjects (or three full A Level/equivalent plus Core Maths or EPQ or AS French/ AS Spanish)

Each subject is taught over nine periods per fortnight, with additional timetabled (directed) independent study allocated. As part of the curriculum offer, all Post 16 students will follow a PSHE and Enrichment Curriculum. PSHE is delivered in tutor groups and Enrichment is delivered on a Wednesday afternoon and is a mix of compulsory and voluntary sessions delivered by school staff and experts in their field such as visiting lecturers, charities and businesses.

Formal examinations take place at the end of Year 13 for most students, with internal assessments throughout Sixth Form. Students opting for Level 3/BTEC courses will have formal external assessments at the end of Year 12 and Year 13. Students and their parents/carers are informed of academic progress with three grade updates and an invitation to at least one parents evening each year.



ENRICHMENT

In an ever competitive university and employment market, we ensure that our Sixth Form students have the edge and also have plenty to say about themselves when it comes to applying to progress in the future.

As a student in Sixth Form you will be encouraged to take advantage of a range of opportunities that enhance your studies, skills and experience.

Partnerships with external organisations allow us to provide that individualised and exclusive experience for everyone. You will have time within the curriculum to explore a range of opportunities.

- World challenge and MIO
- Youth Parliament
- Debate
- Sports
- KEVI creatives
- Tech crew
- School Council
- Reading ambassador
- Drama
- NHS befriender
- Music
- Student Leaders
- Mental health advocate
- KEVI Inspires
- Plus so much more...



PERSONAL DEVELOPMENT

It is our firm belief that everything outside of the classroom and curriculum is of equal, if not more important than the subjects we study. We invest a huge amount of time developing the opportunities and experiences that our young people have access to. In addition, we support many activities that students source themselves outside of school. Sixth Form really is as much about the experience and experiences gained, as it is the grades you come out with at the end of your Post 16 studies.

Alongside enrichment and super curricular engagement, all students are expected to complete work

experience. For some Post 18 courses it is an essential requirement.

A former student, who has successfully managed to secure a prestigious Degree Apprenticeship, has commented: **“The experience that probably helped me the most was having mock interviews with real businesses and getting their feedback. This helped me with my virtual interviews for the degree apprenticeship but was also a great experience as I’d never done one before. There was also lots of information about different career paths and the pros and cons of each.”**



GETTING HERE

Travelling to the Sixth Form couldn't be easier



By bike

Reduce your carbon footprint and store your bike securely on site.



By bus

Morpeth bus station is a short three minute walk from the Sixth Form. There are frequent bus services throughout the area. For more information visit www.arrivabus.co.uk



By car

Just off Cottingwood Lane. Free parking is available a short walk away in Morpeth town centre.



By train

The Sixth Form is located just a 10 minute walk from Morpeth train station. Use the Journey Planner at www.nationalrail.co.uk to plan your journey.

Young people are our future and schools need to empower them so that as citizens of the world they have the knowledge and skills to overcome the consequences of the climate crisis.

Our values in relation to the climate crisis:

- **Integrity** - we recognise the urgency of the crisis; follow the science; and will be open, honest, positive and optimistic in our response
- **Innovation** - we will focus on what can and is being done and will actively explore new ideas
- **Inclusion** - everyone has a role to play in addressing climate change and we will encourage students, staff and stakeholders to contribute

FIND US AT
COTTINGWOOD
LANE, MORPETH,
NORTHUMBERLAND
NE61 1DN

STOP

FINANCIAL
SUPPORT MAY
BE AVAILABLE



ENTRY CRITERIA

Three A Level (or equivalents) pathway

All students need a minimum of five GCSE passes (any subject) at Grade 4 or better to study in Sixth Form.

Four A Level (or equivalents) pathway

If students achieve an average point score of 8 or higher across all of their GCSEs they can study 4 A Levels or equivalent subjects.

Subject	Confirmed entry requirement	Does the subject need to have been studied at GCSE
Art Graphics	Grade 5 in Art or Art Graphics	No
Biology	Grade 5 in Biology or Grade 55 in Combined Science both on higher paper only; and Grade 6 in Maths or study Core Maths if Grade 5 in Maths	Yes
Business	Grade 4 in Business; or Grade 5 in English	No
Chemistry	Grade 5 in Chemistry or grade 55 in Combined Science both on higher paper only; and Grade 6 in Maths or study Core Maths if Grade 5 in Maths	Yes
Computing	Grade 6 in Computing; or Grade 6 in Maths	No
Core Maths (L3)	Grade 4 in Maths	No
CPLD (L3)	Level 2 pass in CPLD; or 5 GCSE Grades at 4+	No
Design Technology	Grade 5 in DT	Yes
Economics	Grade 5 English and Grade 5 in Maths; or Study Core Maths if Grade 4 in Maths	No
English Language	Grade 5 in English Language	Yes
English Literature	Grade 6 in English	Yes

Subject	Confirmed entry requirement	Does the subject need to have been studied at GCSE
Food (L3)	Grade 4 in Food; or Grade 44 in Combined Science	No
French (A Level and AS Level) Spanish (A Level and AS Level)	Grade 6 in French or Spanish to study A Level Grade 5 in French or Spanish to study AS Level	Yes
Further Maths	Grade 8 in Maths	No
Geography	Grade 5 in Geography	Yes
H&SC (L3)	L2 pass in H&SC; or 5 GCSE Grades at 4+	No
History	Grade 5 in History	Yes
IT - Digital Applications (L3)	Level 2 pass in IT; or 5 GCSE Grades at 4+	No
Maths	Grade 7 in Maths	Yes
Media Studies	Grade 5 in English	No
Music	Grade 5 in Music; or Grade 5 Performance standard in Singing or on an Instrument	No
Music Technology	Grade 4 in English	No
Sport (L3)	Grade 5 in GCSE PE; or Grade 5 in English & 55 in Combined Science Must be actively performing at club level in an individual and/or a team sport	No
Photography	Grade 5 in either Art or Art Graphics	No
Physics	Grade 6 in Physics or Grade 66 in Combined Science and Grade 7 in Maths	Yes
Psychology	Grade 4 in English & Grade 5 in Maths; or Study Core Maths if Grade 4 in Maths	No
Religious Studies	Grade 5 in RE; or Grade 5 in English	No
Sociology	Grade 4 in English	No
Theatre and Drama	Grade 5 in Drama; or Grade 5 in English	No

COURSES

ART

AQA

ART GRAPHICS

AQA

BIOLOGY

AQA

BUSINESS

Edexcel

CHEMISTRY

AQA

CHILDREN'S PLAY, LEARNING & DEVELOPMENT

Pearson BTEC

COMPUTING

OCR

CORE MATHS

AQA

DESIGN TECHNOLOGY

AQA

ECONOMICS

OCR

ENGLISH LANGUAGE

OCR

ENGLISH LITERATURE

Edexcel

EPQ

AQA

FOOD SCIENCE & NUTRITION

WJEC

FRENCH/SPANISH

AQA

FURTHER MATHS

Edexcel

GEOGRAPHY

AQA

HEALTH & SOCIAL CARE

OCR Cambridge Technical

HISTORY

AQA

IT - DIGITAL APPLICATIONS

OCR Cambridge Technical

MATHS

Edexcel

MEDIA STUDIES

OCR

MUSIC

Edexcel

MUSIC TECHNOLOGY

Edexcel

THEATRE & DRAMA

OCR

PHOTOGRAPHY

OCR

PHYSICS

AQA

PSYCHOLOGY

AQA

RELIGIOUS STUDIES

OCR

SOCIOLOGY

AQA

SPORT

OCR Cambridge Technical

Details are correct at time of print. We are always committed to enhancing and developing our curriculum offer.



HOW TO APPLY

APPLY NOW



Applications for September 2023 prospective students should use the application form provided by the Sixth Form.

An automated acknowledgement of your application will be received. Any communication about an individual application will be done using the email address provided on the application form.

Offers of learning i.e. your place in Sixth Form will only be confirmed when GCSE results are issued and applicants satisfy the academic entry criteria.

Please note, students already attending The King Edward VI School will not transfer automatically into the Sixth Form. A separate application must be made for a place in Year 12. All admissions will be processed in September of each academic year.





Part of
**The
Three
Rivers**
Learning Trust

CONTACT US

The King Edward VI School,
Cottingwood Lane, Morpeth,
Northumberland NE61 1DN

Telephone 01670 515 415

Email sixthformkevi@the3rivers.net

www.sixthformkevi.the3rivers.net



@sixthformkevi



@KEVISixthForm



@sixthformkevi