



# Hadrian School



'Together we make a difference'

Information  
2020 - 2021



**Welcome to Hadrian School. I hope you find this brief introduction to our school interesting and informative.**

**Please spend some time with us so you can feel the warmth of our welcome.**

**Best wishes,  
Christopher Rollings  
Head Teacher**

**“ Hadrian School has developed into an exceptional special school as a result of your strong leadership. You and senior leaders have a clear aim to make a difference to the lives of the children that attend the school. The school’s motto ‘together we make a difference’ is demonstrated in the effective partnerships that leaders have developed with parents and carers, the local community, other schools and providers, the local authority and the local NHS foundation trust. These partnerships have enabled the school to achieve strong outcomes for pupils and make a highly valued contribution to the work of other providers.” (OfSTED February 2018)**



# Hadrian School Information 2020 - 2021

## Contents

Newcastle City Council	2
Hadrian School General Information	3
Introduction to Hadrian School	4
School Council and Forum	5
Hadrian School Governors	6
Complaints Procedure	6
The School Day	7
The School Curriculum	8
Assessment for Learning	9
Sport and Leisure at Hadrian School	10
Creative & Performing Arts at Hadrian School	12
Hadrian School Website & OfSTED Parent View	13
HEADS and HEADS Website	14
Extended School Activities	15
Working in Partnership with Parents and Carers	16
Friends of Hadrian School	17
Community Links	18
Community Cohesion	19
Our School Rules	20
Pupil Support	20
Keeping Pupils Safe	21
Relationships and Sex Education	21
Preventing Bullying, Preventing Racism	21
Health and Safety	21
School Information	22
Admission Arrangements	24
Transfer Arrangements	24
Attendance	25
Accessibility Arrangements	25
Our Commitment to You	27
Who's Who at Hadrian School	28
Staffing	30
How to Find Us	33



Our Commitment to You -  
Hadrian School will always be:

Warm and Welcoming  
Vibrant and Exciting



## Newcastle City Council

**Director: Children, Education & Skills**

Judith Hay OBE

**Assistant Director: Children, Education & Skills**

Mark Patton

**Head of Special Educational Needs and Disabilities (SEND) - Deanne Taylor**

**Senior SEND Adviser - Sheila Kingsland**

Civic Centre, Barras Bridge, Newcastle upon Tyne, NE1 8PU

**Telephone: 0191 2787878**

**Newcastle SEND Information, Advice and Support Service Lead Specialist - Judith Lane**

**Telephone: 0191 2840480    Email: [judith.lane@newcastle.gov.uk](mailto:judith.lane@newcastle.gov.uk)**

**SEND Assessment, Provision and Review Manager - Philip Morris**

**Telephone: 0191 2774650    Email: [philip.morris@newcastle.gov.uk](mailto:philip.morris@newcastle.gov.uk)**

**Transport** is provided to and from school for some children by the Local Authority. Arrangements are made by the Transport Section (Contact Telephone: 0191 277 4646).

The **Local Authority** provides statutory information for Parents/Carers.

Newcastle's Local Offer can be found on the City Council website - [www.newcastle.gov.uk/localoffer](http://www.newcastle.gov.uk/localoffer) or [www.newcastlesupportdirectory.org.uk/local offer](http://www.newcastlesupportdirectory.org.uk/localoffer)

**Children's Social Care: Children with Disabilities Team** can be contacted on 0191 277 4700.



# Hadrian School General Information

<b>Head Teacher:</b>	Mr. Christopher Rollings
<b>Email:</b>	chris.rollings@hadrian.newcastle.sch.uk
<b>Deputy Head Teacher:</b>	Mrs. Marian Stokle
<b>Chair of Governors:</b>	Mrs. Pat Fox
<b>Business Manager:</b>	Mr. David Palmer
<b>Finance Officer:</b>	Mr. Bob Walker
<b>Administration Assistants:</b>	Mrs Bev Heron Ms. Pauline Turner
<b>Email:</b>	admin@hadrian.newcastle.sch.uk
<b>Project and Facilities Manager:</b>	Mr. Andy Todd
<b>School Address:</b>	Hadrian School, Bertram Crescent, Ncle upon Tyne, NE15 6PY
<b>Telephone:</b>	0191 273 4440
<b>School Website:</b>	www.hadrian.newcastle.sch.uk
<b>HEADS Website:</b>	www.headstraining.co.uk
<b>School Nurse:</b>	0191 219 5270
<b>Physiotherapy:</b>	0191 219 5275
<b>Occupational Therapy:</b>	0191 273 4440
<b>Speech and Language Therapy:</b>	0191 210 6868
<b>Educational Psychology:</b>	0191 277 4577
<b>Clinical Psychology:</b>	0191 210 6868
<b>Business Continuity &amp; Risk Lead Specialist</b>	0191 2774414

**School Type:** Registered with the DFE as a Primary School for pupils with Severe Learning Difficulties and Profound and Multiple Learning Difficulties. Coeducational with Early Years provision.

**Pupil Number:** 170



## Introduction to Hadrian School

Welcome to Hadrian School and our information booklet which we hope will give you an insight into what makes us such a vibrant and exciting place to learn. In partnership with our friends in the Newcastle Compass Trust we have chosen to continue to work in close partnership with Newcastle Local Authority and support their Local Offer ([www.newcastle.gov.uk/localoffer](http://www.newcastle.gov.uk/localoffer) or [www.newcastlesupportdirectory.org.uk/local offer](http://www.newcastlesupportdirectory.org.uk/localoffer)).

Hadrian is a school for primary aged children with a wide range of additional needs including complex, profound and multiple learning disabilities, severe and moderate learning difficulties, speech and language needs, physical, perceptual and sensory needs. We help all our children overcome their personal difficulties through highly trained and expert specialist teaching, through our amazing therapeutic curriculum and resources and our partnership work with parents/carers and health professionals.

Since opening in September 1999 we have had four 'outstanding' OfSTED inspections as well as numerous accolades from HMI, Arts Mark, Govern Mark and many other providers. We are uniquely positioned to develop and build upon our success having in place our own training company HEADS (Hadrian Education and Development Services) which provides access to specialist, high quality training all year round.

We strongly recommend that you visit school to witness our vibrant, broad and balanced curriculum in action and learn more about how we can support you in preparing our children for their journey through life. 'Together we make a difference'.

### **The school has a range of superb facilities and learning environments including the following:**

- A bespoke Rebound Therapy Centre with nine full-size trampolines for Rebound Therapy and Trampolining with overhead tracking facilities.
- An interactive Hydrotherapy Pool complete with an extensive sound and light system.
- A Sensory Studio with high quality interactive equipment.
- A Space for Sport and the Arts complete with a full size Sports Hall and Dance/Music Studio.
- An outdoor Adventure Playground, Internal Playground, Secret Garden, Caterpillar Garden and Early Years Playground.
- A fully equipped Food Technology/Life Skills Room.
- Four mini-buses.
- HEADS Training Centre plus Conference Rooms.
- Parents/Carers Community Facilities.
- A Design and Technology Room.
- A fully resourced Thrive Room.
- A Sensory Integration Suite.
- An extensive Wildlife Garden with Yurt, Deck, Mud Kitchen and Water Wall.



**“You lead a strong staff team which has a clear purpose to improve the outcomes for all pupils and their families. This is evident in strong progress that pupils make from different starting points, the nurturing and caring relationships between staff and pupils, the excellent behaviour of pupils and the many positive comments that parents make about the school. Clear and effective teamwork is evident, staff are treated with respect and everyone’s contribution to achieving strong pupil outcomes is valued.”**

**(OfSTED February 2018)**

Hadrian School works closely in partnership with Thomas Bewick School and Sir Charles Parsons School.

Staff from these schools meet on a regular basis to discuss planning, assessment and moderation as well as transition procedures.

Children from our schools meet for various social and sporting events throughout the year.



As in most schools pupils learn together in classes organised by age from Foundation to Year 6. Currently we have a two year entry in most years and each class has **one Teacher with two or more full time Teaching and Learning Assistants and Support Assistants.**

## School Council and Forum

Hadrian School values the voice of its pupils and seeks to ensure we consult, engage and promote their opinions and choices at every available opportunity. We have a School Council, elected annually by the pupils, which meets with the Leadership Team and Governors on a regular basis each half term. Thanks to our School Council we now have new play equipment, swings, mini-bus and additional lunch time and after school clubs.



Our Commitment to You -  
Hadrian School will always be:

Warm and Welcoming  
Vibrant and Exciting

## Hadrian School Governors

Our Governors ensure that your child receives the best possible education, resources and trained staff in a building fit for purpose. We have a very strong and active Governing Body that takes a great interest in all of our children irrespective of their disabilities, race, gender or background, working in partnership with the Head Teacher, Staff and Parents/Carers of Hadrian School. The Governors are always interested in hearing the views of our Parents/Carers and Stakeholders and are there to support your needs throughout the school year. All School Policies, Programmes of Study and Schemes of Work reflect the special educational needs of our pupils and our School Commitment. We have an extensive range of policy information which is available on request or via our school website where you can also gain information as to how we utilise our Pupil Premium grant.



**“Governors are regular visitors to school and support and challenge the headteacher and senior leaders effectively. Governors work closely and effectively with the senior leaders to evaluate the school’s work and identify priorities for development.”**  
**(OfSTED February 2018)**

### Current Governors 2020 - 2021



**Mrs. Pat Fox**  
**Chair of Governors**



**Mr. Norvil McClurg**  
**Vice Chair of Governors**

Foundation Governors:	Mr. Tommy Thompson, Mr. Christopher Rollings
Co-opted Governors:	Mr. Brian Chapple, Ms. Loveday Fisk, Mrs Michele Davison, Mrs June Ball, Ms. Hazel Stephenson
Parent Governors:	Mr. Gordon Fiddes, Mr. Brian Harrison, Ms. Emma English, Ms. Helen Wilson, Ms. Rachael Parker
Observer:	Mrs Marian Stokle

## Complaints Procedure

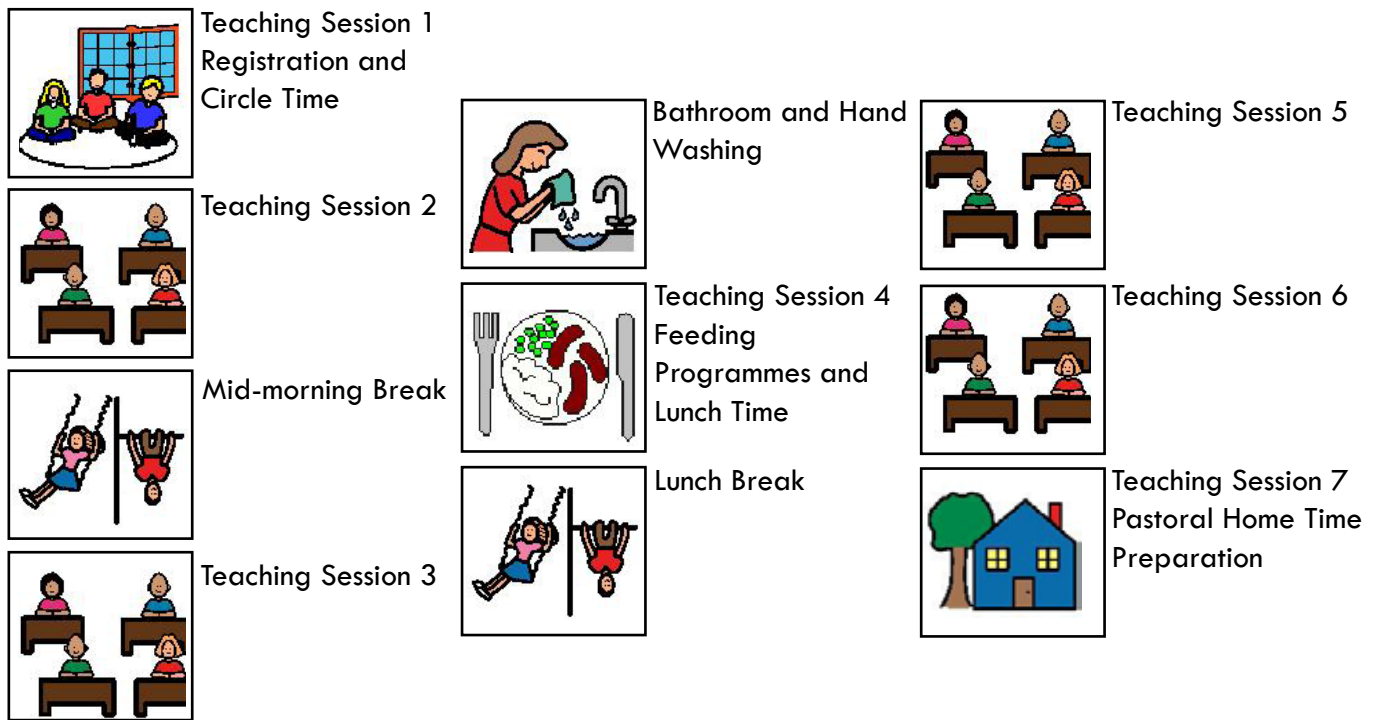
Any Parents/Carers who have a concern or complaint about any aspect of our work are requested to contact the Head Teacher in the first instance who will then investigate the matter and discuss it with Parents/Carers. We will endeavour to do this as quickly and efficiently as we can. If Parents/Carers are still dissatisfied they will be given information on how to take the matter further following guidance from Section 29 of the Education Act 2002 and the Equality Act 2010. A Complaints Policy is available on our school website.

Parents/Carers at some point may well want to access support from SENDIASS - Special Educational Needs and Disability Information Advice and Support Service (Formerly Parent Partnership).



# The School Day

The school day is made up of seven teaching sessions from 9.00am to 3.15pm.



## Assemblies and Religious Education

Where appropriate assemblies are linked to the current school topic or major celebrations (e.g. Harvest, Christmas, Holi, Easter, Diwali, Rosh Hashanah, Ramadan, etc). Pupils are encouraged to actively participate in assemblies and Parents/Carers are welcome to attend at any time. Parents/Carers are reminded that they can withdraw their child from specific religious experiences or acts of collective worship if they so wish.

We celebrate achievements each week in our Friday News Assembly with certificates and 'Good News Medals' for best effort, best friend, best attitude, best work, etc. Each half term we invite Parents/Carers to join us to celebrate significant progress at a special assembly. You are more than welcome to attend any assembly on request.



We also promote our own British Values and celebrate many varied traditions and festivals including Remembrance Day, Bonfire Night, Hallowe'en, Christmas and Pancake Tuesday.

We celebrate special achievements with our 'Good News Postcards' which are delivered home via the Royal Mail Postal Service.

Our Commitment to You -  
Hadrian School will always be:

Warm and Welcoming  
Vibrant and Exciting

## The School Curriculum

**“The broad and balanced curriculum inspires pupils to learn. The termly Hadrian Herald publication is a vehicle to acknowledge and celebrate the breadth and balance of teaching and learning, as well as inform parents, pupils and colleagues about school priorities and initiatives. It is an example of exemplary practice.”**  
(School Achievement Partner)

Our ‘School Commitment Statement’ describes our goal to be ‘ambitious and successful’, ‘inclusive and diverse’, ‘vibrant and exciting’, ‘nurturing and caring’. Our curriculum helps deliver these goals by ensuring that we know our children well, that we challenge our children and set realistic goals, that our children are active learners following an interesting, stimulating, relevant curriculum.

We use a range of tools to help our children make progress. Our therapeutic curriculum is outstanding and, where appropriate, our children have access to Hydrotherapy, Rebound Therapy, Music Therapy, Massage, Passive Exercises, Sensory Integration, Intensive Interaction, TacPac, Body Awareness, Jabadao – developmental movement, Occupational Therapy and Physiotherapy.

Where appropriate our children have access to reading and numeracy intervention approaches including ‘Letters and Sounds’, ‘Jolly Phonics’, ‘Oxford Reading Tree’, ‘Pen Pals Handwriting Scheme’, ‘Numicon’, ‘Practical Maths’, ‘White Rose Maths’.

Our children requiring communication support have access to Makaton supported sign language, Proloquo2go, Signing Clubs, communication aids, Eye Gaze Technology, visual timetables, iPads, switch adapted resources, Communication Pathways, Total Communication Approaches, Objects of Reference, On Body Signs and Speech and Language Therapy.

We have an extensive number of ‘break-out’ learning spaces for individual and small group learning including a Sensory Integration Room, Thrive Room, a Sensory Studio, Library, Music/Dance Studio and Food Technology Room as well as extensive school grounds for outdoor learning including our Secret Garden, Caterpillar Garden and Wildlife Garden complete with Yurt, Deck, Mud Kitchen and a Water Wall.



## Assessment for Learning

**“Pupils are confident and curious learners, they enjoy school, are encouraged to work independently, they behave safely, understand the need to have school rules and have awareness of the needs of others.” (OfSTED February 2018)**



The Head Teacher is always happy to meet Parents/Carers to discuss their child's educational progress. The school record keeping system enables Parents/Carers to see the experiences, skills and concepts a child has developed over a period of time. PLPs (Personalised Learning Plans) are prepared by Teachers for each pupil after consultation and review with Parents/Carers. All new pupils entering Hadrian School will have a new PLP within 6 weeks, following baseline assessments. Individual learning outcomes, linked to the child's EHC Plan, are set for all pupils on a half-termly basis. Reports will be sent to Parents/Carers annually or more frequently where appropriate. Parents/Carers will have an opportunity to discuss their child's progress with a member of the Leadership Team and the Class Teacher at the Annual Review of their child's Education Health Care Plan.

The main focus of assessment at Hadrian School will be teacher assessment of pupils' progress over time. Assessment will principally be formative, this is, it will be used as a tool to inform teaching, and help teachers in their planning of ongoing work appropriate to pupils' needs. At Hadrian we use a broad, all-purpose approach to assessment ranging from our 'Engagement Model' for children not involved in subject specific learning, through to Pre Key Stage Standards and, where appropriate, National Curriculum age-related expectations, for children who do follow a subject specific curriculum. At certain times, eg. in line with a pupil's annual EHCP review and on transfer from Hadrian School, assessment will be summative, ie. it will summarise a pupil's current level of achievement.

On entry to the EYFS (Early Years Foundation Stage) pupils are assessed using the Hadrian School EYFS Profile.

**“Leaders and governors have created a culture that enables pupils and staff to excel. They lead by example.” (School Achievement Partner)**

Our Commitment to You -  
Hadrian School will always be:

Warm and Welcoming  
Vibrant and Exciting

## Sport and Leisure at Hadrian School

Hadrian School places a great deal of emphasis on Sport and Leisure and offers an extensive curriculum of opportunity in and out of school hours.



### **Rebound Therapy**

Pupils have access to nine trampolines and receive certificates and badges for their efforts in Rebound Therapy or Trampolining.

### **Community Sport**

Hadrian School has established very good links with Newcastle United F.C. Coaching Scheme and pupils receive coaching from Newcastle Eagles for basketball as well as numerous coaching opportunities for cricket, break dancing, athletics and dance.

### **Swimming and Hydrotherapy**

Pupils have access to Halliwick teaching methods in the School Hydrotherapy Pool. Year 6 pupils use Sir Charles Parsons School's Swimming Pool on a regular basis. Pupils receive certificates and badges for their efforts in Halliwick and swimming.



Safe and Healthy

Nurturing and Caring

Inclusive and Diverse

Ambitious and Successful



### **Hadrian Rebound Therapy/HEADS Training Centre**

Thanks to a £1 50K Sport England Grant and our own amazing fund raising efforts we now have a bespoke Rob Armstrong Rebound Therapy/HEADS Training Centre at Hadrian School which offers fantastic therapeutic access for our community as well as high quality training and professional development.

### **P.E. and School Sport**

Most pupils have two taught P.E. lessons per week with opportunities for large and small apparatus work, games, dance, athletics, gymnastics and outdoor and adventurous activities. Hadrian School has access to qualified coaches for Trampolining, Rebound Therapy, Halliwick Swimming and Football. Individual members of staff are also qualified specialist P.E. Teachers. The school has excellent sporting facilities which it leases to the community. Local schools and community groups take advantage of our Rebound Therapy Centre, Sports Hall, Dance/Music Studio, Soft-Play and Hydrotherapy Pool. We also have close links with our Trust Partner Schools - Thomas Bewick and Sir Charles Parsons School where many of our pupils transfer at the end of Year 6.



Our Commitment to You -  
Hadrian School will always be:

Warm and Welcoming  
Vibrant and Exciting

## Creative & Performing Arts at Hadrian School



The creative and performing arts have a huge role to play in the education of our pupils at Hadrian School. We offer a wealth of creative experiences including music, drama, dance and art. The school has superb facilities to promote the teaching of creative and performing arts including a Music/Dance Studio and a Sports Hall complete with staging, sound system and lighting rig. The calibre of our facilities promotes training on a regional and national basis and attracts talented performers such as the 'Lions of Zululand' dancers and the brilliant 'Bamboozle' Theatre Group. The school has developed very strong links with the creative arts community and partners include the Newcastle Music Service, Sightlines, Dance City and Northern Stage Theatre. The school has a strong tradition of performing arts and holds regular productions in school and the wider community.

We are very much involved with the 'Shakespeare in Schools' Festival and have produced very successful performances of 'A Midsummer Night's Dream', 'The Tempest', 'Romeo and Juliet', 'Hamlet', 'Macbeth', 'Antony and Cleopatra' and 'The Comedy of Errors' all of which were performed at Northern Stage. Our production of 'A Midsummer Night's Dream' was also performed at the Lyceum Theatre on Shaftsbury Avenue.

We hold a biennial Arts Exhibition to showcase the wonderful art work our children produce.



Hadrian School makes best use of technology and has produced a range of excellent DVDs and PowerPoints of creative activities in school which we share with our Parents/Carers and school community.

## Hadrian School Website

[www.hadrian.newcastle.sch.uk](http://www.hadrian.newcastle.sch.uk)

Our school website contains a wealth of information for Parents/Carers, staff, visitors and pupils and is continually being updated. As well as practical details such as school information and termly dates, it highlights the staff and multi-professionals who work within Hadrian School. It lists the outstanding facilities available in school and provides information about forthcoming events as well as informative 'Blogs'. Our Blogs are updated, usually weekly, by classroom staff and give a good insight into the activities our children have undertaken throughout the week. We encourage all Parents/Carers to visit our Blogs and comment on them whenever possible. (<http://www.hadrian.newcastle.sch.uk/Blogs>)



There is currently a Covid 19 section where you can access all the latest communications from school and advice and support.

There is a 'Websites/Resources' section which signposts Parents/Carers and staff to relevant educational websites providing stories, games, fun activities and online learning.

You will also find in our 'Our School' section information regarding School Policies, including this document as well as our SEND Policy, Safeguarding Policy, On-Line Policy, Creative and Performing Arts Policy, Complaints Policy and Behaviour Support Policy.

In the 'Pupil Premium' section you will find details of how we use these funds to help support our children's learning.

The Friends of Hadrian School also have their own Facebook Page.



### **OfSTED Parent View**

Please give your views on our school via the OfSTED Parent View website.

You can access the questionnaire in three different ways:

[www.hadrian.newcastle.sch.uk](http://www.hadrian.newcastle.sch.uk) - Parents - Links - Websites

or [www.hadrian.newcastle.sch.uk](http://www.hadrian.newcastle.sch.uk) - Parents - Information - Your Views

or <http://parentview.ofsted.gov.uk/>



Your opinions are very important to us so please take the time to complete this questionnaire if you haven't already done so.

Our Commitment to You -  
Hadrian School will always be:

Warm and Welcoming  
Vibrant and Exciting

## Extended Schools Initiative - HEADS

As part of its core offer, Hadrian School has developed a centre for SEND training and accredited courses. We facilitate regional training in partnership with Newcastle Local Authority, QCA, City and Guilds, One Awards, Qualsafe, EQUALS and Sports Partners. We host courses and conferences on a wide range of topics for Teachers, Health Professionals, Parents and Carers including the following: Behaviour Support, Physical Education, Confident Parenting, Music, SEND NVQ, Rebound Therapy, First Aid, Moving and Handling, Infant Practitioner and City and Guilds Level 2 course for Teaching and Learning Assistants.



### Our hosting facilities for conferences and training include:

Our HEADS Training Suite (which can cater for up to 80 delegates) complete with WiFi and IT facilities. We also have sports facilities, a dance/drama/music studio, a hydrotherapy pool, school hall and a Space for Sports and the Arts workspace which can cater for up to 100 delegates.

Courses and training all comply to our new Covid regulations.

**For further information on short courses and for booking our conference facilities please contact admin on 0191 2734440 or visit the HEADS website at [www.headstraining.co.uk](http://www.headstraining.co.uk).**

## HEADS Website [www.headstraining.co.uk](http://www.headstraining.co.uk)

This website highlights all the current courses run by HEADS as well as providing information on the facilities available to hire at Hadrian School.





Safe and Healthy

Nurturing and Caring

Inclusive and Diverse

Ambitious and Successful

## Extended School Activities



Hadrian School has Extended Services Status and runs a number of clubs in and out of school hours. These include art clubs, sport clubs, swimming and cookery clubs. The After School Clubs usually run for 24 weeks each year on Tuesday and Thursday evenings from 3.30 - 5.00pm. The school also offers a number of weekly lunchtime clubs including gymnastics, dance, art and school choir. We also run a number of Clubs during the school summer holidays which we would encourage you to utilise.



Our Commitment to You -  
Hadrian School will always be:

Warm and Welcoming  
Vibrant and Exciting

## Working in Partnership with Parents and Carers

The success of Hadrian School relies upon a partnership approach to the education of your child.



We will support you by:

- offering an open door policy
- making you feel welcome at Reception
- keeping in touch through newsletters, home/school books, Class Dojo, Blogs, our texting service and the 'Hadrian Herald'
- offering Parent/Carer Evenings, appointments, home visits and workshops
- using the school website to signpost information and keep you up to date with school life
- using the school plasma screen and assemblies to celebrate the achievements of your child
- keeping you informed of your child's progress through reports, records of achievement and class coffee mornings.

Our school website has an informative Parents'/Carers' section that signposts resources, support and a range of software that can be used with your child at home. Please visit this site at [www.hadrian.newcastle.sch.uk](http://www.hadrian.newcastle.sch.uk) and feedback your views to school on its usefulness.

Hadrian School offers Parents and Carers from around the city the opportunity to attend Confident Parenting Workshops. These have run very successfully over the last 20 years and led to the publication of our 'Confident Parenting Handbook and DVD'. Income generated from the sale of this book nationally, along with that gained from training provided for Confident Parenting workshop facilitators, is used to support the work of HEADS (Hadrian Education and Development Services) and is ring-fenced for extended school activities for our children.



The 'Confident Parenting Handbook and DVD' won two prestigious awards - the National BILD Award (British Institute of Learning Disabilities) and a local NHS Award for Training and Innovation.



# Friends of Hadrian School



The 'Friends of Hadrian School' is a registered charity which raises funds to promote the work of the school by providing equipment and activities for use by all pupils. All Parents/Carers are strongly encouraged to support and attend functions arranged by 'The Friends of Hadrian School'. A committee of Parents/Carers and Staff



organise social functions, fund raising events and school based activities to support the work of the school. The 'Friends of Hadrian School' support theatre visits and field studies, purchase equipment and provide funds to help support class running costs. However their principle function is to bring Staff and Parents/Carers together in social settings to promote friendships and relationships for the common good of the pupils and school.

You can follow the progress of the 'Friends' on our Facebook Page.



Please visit our 'Just Giving' site if you would like to track our current fund raising project to provide a new Hydrotherapy Pool or make a donation towards our projects.

<http://www.justgiving.com/hadrianschool>

Our Commitment to You -  
Hadrian School will always be:

Warm and Welcoming  
Vibrant and Exciting

## Community Links



Hadrian School is committed to establishing, maintaining and developing links with the local community wherever possible. These links give our pupils opportunities to experience many aspects of life outside the immediate school environment and in some instances may provide valuable preparation for adulthood.

### Established links include:

Newcastle **Compass Trust**

**The Greggs Foundation**

**Evening Chronicle Sunshine Fund**

**The Tim Lamb Centre and The Alan Shearer Centre**

Links with **Sir Charles Parsons School** where many of our pupils transfer in Year Seven

Support to charitable organisations including, **St. Oswald's Hospice, Operation Christmas Child, Jeans for Genes, Children in Need**

Coaching sessions from **Newcastle United FC, Newcastle Falcons and Newcastle Eagles**

Links with **residential artists and regional music and dance festivals**

Residential visits to **London, York, Edinburgh, Switzerland, Beadnell and Bendrigg Trust**

**Pendower Good Neighbour Project**

**Newcastle University** and the **University of Northumbria**

**The High Street Group**

**FLOW Project**

**INTU**

Hadrian School is used as a **training placement** by a wide variety of students and trainees. These include nursing students, teaching students, NVQ students and medical students. Hadrian School is also the venue for a range of adult courses and workshops covering a host of topics from First Aid, Moving and Handling to Special Needs Assistants Accredited courses.

### Working with Parents/Carers

We strive to support Parents/Carers throughout the school year in many ways including workshops, coffee mornings, Parent/Carer evenings, courses, advice and support and the Hadrian School Website. Each term we run a Confident Parenting group to help show best practice in supporting behaviour. Parents/Carers may be experiencing difficulties with sleep routines, fussy eaters and challenging behaviour. We want Parents/Carers to feel supported by all the professionals at Hadrian School - teachers, physiotherapists, speech and language therapists, occupational therapist, nurses, psychologists and social workers and offer an open referral and open door policy at these sessions.

Safe and Healthy

Nurturing and Caring

Inclusive and Diverse

Ambitious and Successful

## Community Cohesion

We are very grateful to the following people whose dedication, hard work and support have had a huge impact on our school projects: Rob Armstrong, The Reece Group, St. Nicholas Trust, Blakelaw Social Club, The Botanist, INTU, The High Street Group, Concept, Stagecoach, Greggs, Westfield School, BT, Deloitte, the Newcastle Gateshead Hilton Hotel, the Co-op, Irwin Mitchell, Pendower Good Neighbour Project, Newcastle Gosforth Rotary Club, the North East Chinese Association, Newcastle Medics, Jurys Inn, Mercedes Benz Newcastle, Lloyds Bank and many more!



## Our School Rules



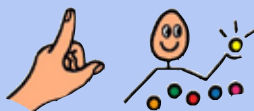
Be kind



Be a good friend



Be polite



Do your best



Share



Look after yourself and stay safe



Look after our school

## Pupil Support

Hadrian School is committed to providing clear behavioural boundaries and guidelines for pupils to operate within. We endeavour to create a learning environment (a Thrive Approach) where each pupil feels valued and respected through praise and positive reinforcement of appropriate behaviours.

All staff are responsible for creating this positive ethos and are expected to adhere to the school's Behaviour Support Handbook. In general, pupils will be encouraged to move quietly and safely around the building. Staff will help create an atmosphere of discipline through a calm, confident, controlled approach to behaviour support.

When entering into a dialogue with a pupil, staff will use language and signs appropriate to the individual's level of comprehension.

Please help us by reinforcing our school rules at home.



## Keeping Pupils Safe

At Hadrian School we are committed to helping Parents/Carers understand the school's responsibility for the safety and welfare of all pupils. Mr. Rollings is the Lead Designated Safeguarding Officer responsible for Safeguarding Children. We have a comprehensive School Child Protection Policy and Handbook which includes a section on parental involvement. This document is available on request. All child protection issues are handled sensitively, with the well being of the child influencing all other considerations.

Any person employed by the City Council who sees, hears about, or has concerns for or about any pupil which may involve physical, sexual or emotional abuse or neglect must contact the Designated Safeguarding Officer.

In the case of serious injury, immediate medical attention must be obtained. This will usually be through attendance at hospital.

The safety of the child is paramount, and action may need to be taken without first consulting the Parents/Carers, particularly in cases of possible sexual abuse or serious injury. Detailed records will be logged into CPOMS (a secure online monitoring system for recording a whole range of pastoral and welfare concerns) and forwarded to the Designated Safeguarding Officer.

## Relationships and Sex Education

Relationships and Sex Education is taught to pupils in a manner appropriate to their age and development and usually as part of the wider health education scheme of work supported by the nursing team.

## Preventing Bullying

"Bullying is the wilful, conscious desire to hurt, threaten or frighten someone." Hadrian School will not tolerate any form of bullying or intimidation and if a situation arises it will be dealt with quickly and firmly. Any incidents of bullying will be promptly reported to a member of the Leadership Team and detailed information recorded.

## Preventing Racism

The school will not tolerate any incidents of racism in any form and will report any such incidents to the Local Authority.

## Health and Safety

The school places a very high emphasis on Health and Safety and has a wealth of policies and procedures in place to ensure the safety and well being of pupils and staff. We comply with all LA and DfE Health and Safety Guidelines, particularly in relation to Risk Assessments, Moving and Handling Guidelines and Educational Visits.



Our Commitment to You -  
Hadrian School will always be:

Warm and Welcoming  
Vibrant and Exciting

## School Information

**“School leaders continually strive to improve and enrich the learning for the pupils.” (School Achievement Partner)**

### School Dress

All pupils are expected to come to school sensibly and appropriately dressed. Sweatshirts, T-shirts, Polo shirts and Sweat Cardigans with the school logo are usually worn and can be purchased from 'Border Embroideries Ltd' via school. The school uniform is optional, however any purchases through this company result in a small profit to school funds. All pupils must change for P.E. and are requested to bring the following items of clothing each week: T-shirt, Shorts, Plimsolls, (no black soles). It would be helpful if all clothing could be clearly marked with your child's name.

### Jewellery

The wearing of jewellery is strictly prohibited for health and safety reasons. The Head or Deputy Head Teacher will contact the Parents/Carers of any pupil who comes to school wearing earrings and bracelets.

### Meals

All full time pupils stay in school for midday lunch which is provided on site every day. Pupils may bring their own packed lunch if they wish. Pupils who require special diets are catered for; all meals are prepared and cooked in our own kitchen. Free school meals are supplied in the same way and Parents/Carers wishing to enquire about their eligibility for free meals should contact our Admin Assistant Bev Heron. All dinner monies should be paid at least one week in advance. Please do not send drinks in any glass bottles. Water is always served with lunch and is readily available throughout the school day.



### Swimming

Pupils in Foundation, Years One and Two will use our School Hydrotherapy Pool for their swimming lessons each week. Please ensure that your child brings their own clearly labelled swimming costume and towel on a weekly basis. Pupils in Year Six have the opportunity of swimming at Sir Charles Parsons' Pool. School asks for a contribution to cover the cost of tuition and transport. We very much value and appreciate Parental/Carer support for Swimming, Hydrotherapy and P.E. If you feel able to help in any way please feel free to contact school.

### Medication

We generally are aware of your child's particular medication. It is imperative, however, that you let us know of any changes (increase, decrease or cessation) or any treatment your child is having as recommended by a Doctor. This should be sent to school in writing. Please also ensure that the Nursing Staff have a good supply of your child's medication, in its original packaging, for use in school. School is unable to give non-prescribed medicine to any pupil.



### Transport

Parents/Carers and visitors are requested not to arrive at school during transport times (8.45 - 9.10am and 3.00 - 3.20pm) as access will be restricted until all pupils have safely embarked or disembarked from their own school transport. Most pupils travel to school on transport organised by the Local Authority. At 9.00am Teaching and Learning Assistants and Support Assistants will bring pupils to classrooms where they will be received by Teaching Staff. At 3.15pm all Staff will escort pupils from class out to meet the transport contractors. Any changes to transport arrangements must be given to the Transport Coordinator, Bev Heron, in good time in order to notify school transport.

### Charging and Lettings Policy

The Education Act (1996) provides for the Governing Body of Hadrian School to have control over the use of school premises, both within and outside of school hours. We encourage the community to make best use of our excellent facilities and have a Lettings Policy, complete with hire charges and conditions of use available on request. Please look at our HEADS website for further information - [www.headstraining.co.uk](http://www.headstraining.co.uk). Our HEADS Company significantly contributes to the cost of educational visits and out of school activities, however, Parents/Carers may be invited to make a voluntary contribution towards the cost of such activities. No pupil will ever be excluded from participating if contributions are not forthcoming from Parents/Carers.

### Smoking Policy

A 'No Smoking Policy' has been adopted within school, and should be adhered to by all staff, Parents/Carers, visitors and contractors. Parents/Carers may leave the school building during visits or appointments but are responsible for ensuring that they do not smoke in view of pupils or on the school grounds.

### Security

The school takes the welfare of the pupils and staff seriously and has procedures in place to restrict access to the building. The main doors have a key pad entry system, intercom and cameras to view visitors. All visitors have to sign in and wear a visitor's badge. All staff working with pupils have to undergo Enhanced DBS Disclosures. The school site has extensive, high quality CCTV recording 24 hours a day.

### Links

At Hadrian School, with other schools where appropriate, we aim to give some of our pupils experience of socialising with, and being educated alongside, their mainstream peers or friends in other Trust Schools. These links may involve pupils from Hadrian School being supported in another setting, as well as pupils from other schools visiting our school on a planned basis.



## Admission Arrangements

Hadrian School adheres to the Admission Criteria for pupils as detailed within the Local Authority's Admissions Policy Document.

Pupils admitted to Hadrian School will have an Education Health Care Plan (EHC). The Local Authority will coordinate this plan and has a duty to request advice and information from Health and Social Care as part of the statutory assessment process. The Local Authority must consult the child and the child's Parents/Carers throughout the process of assessment and production of an EHC Plan. The outcomes included in the EHC Plan should be realistic and achievable and will be reviewed at the Annual Review Meeting.



Pupils are normally considered for admission on completion of a statutory assessment. Arrangements are made by the LA's Special Educational Needs Section through the SEND Panel (Tel: 0191 277 4420). In exceptional cases it may be necessary for the LA to recommend an assessment/emergency placement for a child at Hadrian School, due to unexpected changes in their health or development, or if a child with a significant learning difficulty moves into the LA. Again, any such placements would be considered and agreed by the SEND Panel.

Occasionally referrals are sent to the school before the pupil is of statutory age, and then, where possible, the school tries to make provision for younger pupils.

The school has an agreed Admission Criteria to which we aim to adhere. Parents/Carers are strongly advised to make a preliminary visit to view school and gain additional information relevant to the pupil.

## Transfer Arrangements



At Hadrian School we aim to make the transition from Preschool to Primary and Primary to Secondary as smooth and as consistent as possible. Close relationships have been established with EEAST (Early Education Additional Support Team) and Sir Charles Parsons School, our secondary provision, to facilitate this process.

Decisions on the appropriate placement can be discussed at any time through the school year and through the Annual Review process. As a school we will endeavour to co-ordinate a smooth transfer to an appropriate secondary provision giving the Parents/Carers and pupils opportunities to visit the new school during the spring and summer term.

We do believe in placing pupils in mainstream schools, either on a regular supported basis or on a part-time/full-time basis if this is appropriate for the pupil.

We have a Special Educational Needs Policy and Handbook which detail all school procedures and arrangements. This policy is available to all Parents/Carers on request.

## Attendance

- Please follow Covid 19 advice for attendance information.
- Pupils should be absent from school only if they are ill or attending medical appointments.
- Parents/Carers should not take holidays in term time. It is a legal requirement that pupils attend school each and every day of the school term.
- In the event of illness, school should be informed as soon as possible. The transport company should also be informed if at all possible.
- Pupils should be kept at home for at least 48 hours after sickness or diarrhoea, and should not be sent to school if Parents/Carers suspect that they are unwell. School should be informed immediately of all contagious and infectious diseases.
- On discharge from hospital please keep your child at home until they are fit to return to school.
- Please keep us informed of hospital appointments, admissions to hospital, dental appointments or other clinical appointments.
- It is usual, after an unexplained absence of two or three days, for the Educational Welfare Officer to be informed and asked to visit the home. It is your duty as a Parent/Carer to ensure that your child attends school.



## Accessibility Arrangements

We have outstanding facilities in a fully inclusive building with specialist resources on site including our new fully accessible Rebound Therapy Centre, a Hydrotherapy Pool, Sports and Arts facility, Soft Play, Sensory Studio and disabled friendly play areas and gardens. We use the latest technologies to teach and communicate with our children and adopt a Total Communication Approach using iPads, Voice Output Communication Aids, Makaton Sign Language, Symbols, Objects of Reference and On Body Signs. Our adapted mini-buses ensure that we make full use of our community resources, educational visits and residential.



PLEASE  
SHUT  
ATE AFTER  
USE

**“Pupils’ behaviour is exceptional; there are respectful relationships between pupils and with staff. There is effective multi-agency working and leaders take prompt and decisive action to secure pupils’ safety.” (OfSTED February 2018)**



# **Hadrian School**

## **Our Commitment to You**

**Our Children and their Families, our Community, our Partners and our Staff will always find Hadrian School to be:**

**Warm and Welcoming**

**Vibrant and Exciting**

**Safe and Healthy**

**Nurturing and Caring**

**Inclusive and Diverse**

**Ambitious and Successful**

**We are proud of our:**

**Pupils and Families**

**Staff and Governors**

**Partners and Community**

**Creativity and Collaboration**

**Achievements and Aspirations**

**Proud of our roots, celebrating today  
and making tomorrow count**

**‘Together we make a difference’**

Our Commitment to You -  
Hadrian School will always be:

Warm and Welcoming  
Vibrant and Exciting

## Who's Who at Hadrian School



Mr. Christopher Rollings  
Head Teacher



Mrs. Marian Stokle  
Deputy Head Teacher



Mrs. June Ball  
Head of Extended  
Services



Miss Sue Lambert  
Assessment Coordinator  
Pupil Premium Coordinator



Mr. John Mosley  
Senior Leader  
Science Coordinator



Mr. David Palmer  
Business and Extended  
Services Manager



Mr. Andy Todd  
Project and Facilities  
Manager



Mrs. Irene Morns  
Cook



Mr. Paddy Leonard  
Caretaker

Safe and Healthy

Nurturing and Caring

Inclusive and Diverse

Ambitious and Successful

### Speech and Language Therapists



Alison Lavery



Louise Brown



Fiona Johnstone

### Physiotherapists



Kate Simpson



Kim Jarvis



Louise Histon



Gemma Baird  
Therapy Assistant

### Occupational Therapist



Nikola Sarkar

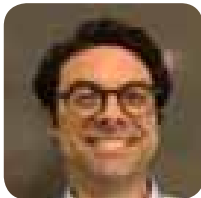
### Medical Staff



Dr. Anna  
Thorley



Dr. Morag  
Andrew



Dr. Marc  
Woodbury-Smith



Matron  
Emma Willey



Senior Sister  
Vikki Porter

### Health Care Assistants



Gail Metcalf



Lee Southern

### Music Therapists



Bev Rayner



Afra Jurkiewicz

### Visual Impairment Service

Claire Pod and Team

### Educational Psychologist

Sarah Swift

### Hearing Impairment Service

Jill Dodds and Team

### Clinical Psychologist

Emily Thompson

**Our Commitment to You -  
Hadrian School will always be:**

**Warm and Welcoming  
Vibrant and Exciting**

## Current Staff

### Leadership Team

Christopher Rollings	Head Teacher
Marian Stokle	Deputy Head Teacher/SENCO
June Ball	Extended Services, PSHE Coordinator
Sue Lambert	Assessment Coordinator/Pupil Premium Coordinator
John Mosley	Science Coordinator/Thrive Coordinator
David Palmer	Business and Extended Services Manager
Andy Todd	Project and Facilities Manager

### Teaching Staff

Rachael Budden	Literacy	Ellen Jankowski	PE & School Sport
Jess Burns	Outdoor Education	Scott Marshall	Creative & Performing Arts & DT
Phil Cookson	Creative & Performing Arts	Nadia Motie	Sensory Curriculum
Sharon Dodd	Early Years Foundation Stage	Dave Robinson	IT/Website Manager
Loveday Fisk	Communication	Marc Teasdale	Drama
Coralie Forbes	Creative & Performing Arts	Antonia White	Numeracy
Tracy Gooderick	Humanities		

### Teaching & Learning Assistants

Senior TLAs: Mandy Allan, Michele Davison, Clare Downey, Yvonne Scholes, Sharon Smith, Ann Teasdale, Jackie Wearn

Robina Akhtar	Alison Dodds	Rob Oglethorpe	Kairen Smith
Lisa Anderson	Simon Hall	Sue Oglethorpe	Tracy Stanley
Tracy Askew	Phil Hockley	Susan Palmer	Natasha Tait
Anita Bernard	Clair Lyall	Alex Pilling	Ann Walker
Ann Brown	Jess Mitchell	Babs Quinn	Catherine Walton
Colleen Cooney	Leanne Molloy	Elaine Quinn	Wendy Wilson
Angela Cummings	Katy Muir	Shannon Richards	
Lynn D'Oca	Adam Murphy	Helen Shepherd	



**Support Assistants**

Ameenah Al-Janabi	Theresa Cross	Emma Mawson-Johnson	Jen Taylor
Lyndsey Allen	Jane Cumisky	Alyson McDonald	Paula Ward
Aysha Anwar	Corrie Dobson	Lewis Moody	Sarah Ward
Scott Ball	Clare Harrison	Susan Mullen	Hazel Willis
Vikki Ball	Emma Hulse	Andy Ridden	Suzi Young
Louise Brown	Sharon Irving	Paula Shackleton	
Abbie Cram	Lauren Knox	Mandy Sharpe	
Mary Craven	Toni Lockey	Keira Sheiber	

**Admin Staff**

Bev Heron	Admin Assistant
Pauline Turner	Admin Assistant
Bob Walker	Finance Officer

**Apprentice**

Amy McConnachie

**Medical Staff**

**Doctor**

Dr. Anna Thorley  
 Dr. Morag Andrew  
 Dr. Marc Woodbury-Smith

**Health Care Assistants**

Gail Metcalf  
 Lee Southern

**Nursing Team including:**

Matron Emma Willey  
 Senior Sister Vikki Porter  
 Sister Mags Kelly  
 Sister Julia McKinnell  
 Sister Hayley Watson  
 Sister Claire Connolly  
 Sister Stacey Williams

**Play Specialist**

Joanne Ray  
 Lesley Hall

**Caretaker**

Paddy Leonard

**Physiotherapists**

Kim Jarvis  
 Kate Simpson  
 Louise Histon  
 Gemma Baird (TA)

**Speech and Language Therapists**

Louise Brown  
 Alison Lavery  
 Fiona Johnstone

**Occupational Therapist**

Nikola Sarkar

**Music Therapists**

Beverley Rayner  
 Afra Jurkiewicz

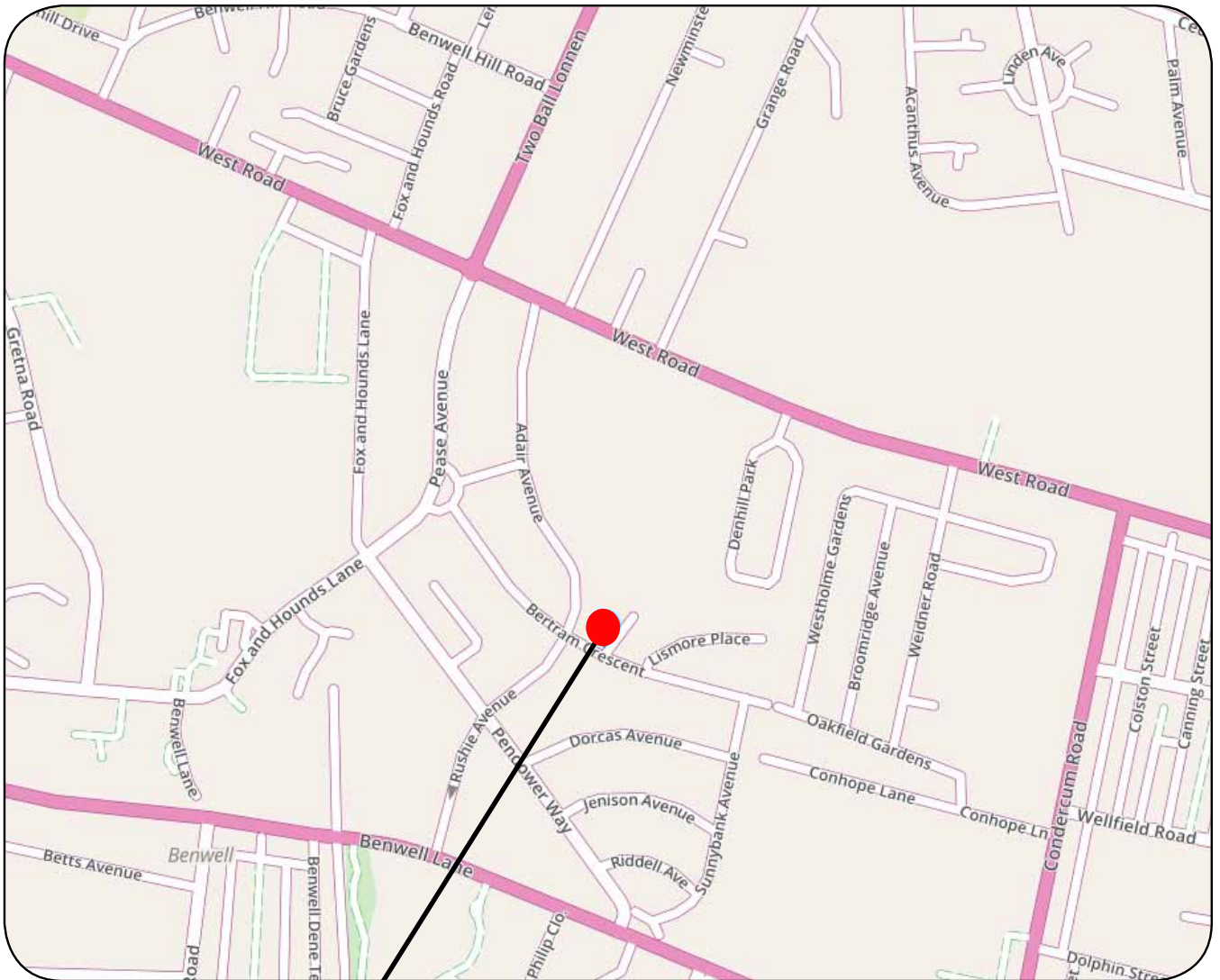
**School Health Care Support**

Kathleen Doddsworth  
 Christine Richardson



**“Parents spoke of the support that they receive, and that staff were always there to listen. Many parents report that the school has transformed their child’s life and speak highly of your leadership.” (OfSTED)**

# How to find us



Hadrian School  
Bertram Crescent  
Newcastle upon Tyne  
NE15 6PY  
0191 2734440

Public Transport:

From Eldon Square:  
Buses 39 or 40

From Central Station:

Buses 10, 11 or 38





Hadrian Education And Development Services



Rob Armstrong Rebound Therapy Centre



"Staff have developed a very close partnership with parents and carers who value the school very highly. Leaders understand that parents have a very important role in their child's education and development. You have put this at the centre of your work, and staff provide regular training for parents and carers to develop their parenting skills. As a result, there has been an improvement in pupil outcomes, pupils' behaviour and parental engagement."  
(OfSTED February 2018)



Newcastle City Council

Hadrian School, Bertram Crescent, Newcastle upon Tyne, NE15 6PY  
Tel: 0191 2734440

School Website: [www.hadrian.newcastle.sch.uk](http://www.hadrian.newcastle.sch.uk) HEADS Website: [www.headstraining.co.uk](http://www.headstraining.co.uk)