

Using Inset Puzzles to Support Speech and Language Development

Interaction Skills

Making choices - hold out two pieces of the jigsaw and encourage the child to make a choice.

Taking turns- child take turn to put the correct pieces in, to make the puzzle.

Asking for help appropriately to find the space the piece needs to go into.

Requesting - encourage the child to ask for more.

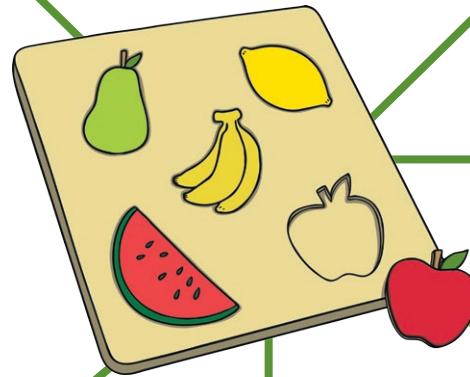
Cause and effect - There are some inset jigsaws that make noises when the piece is inserted. To activate the sound, the child needs to insert the piece building on cause and effect.

Speech

Use inset puzzles that feature animals and transport to encourage symbolic noises.

Use inset puzzles which contain target sounds.

Place sound cards under the pieces and when the child says what is on the card they can put the piece in the puzzle.



Expressive Language Skills

One word level - labelling the pieces.

Two word phrases - describe the pieces using colours, e.g. 'brown horse', or 'purple teddy'.

Auditory Memory

Place the pieces out in front of the child and ask them to find certain pieces on command, e.g. 'find me the dog, cat and fish'.

Prepositions

Hide the pieces in certain places - in, on and under different objects and encourage the child to look for them.

Concepts

Model the following concepts:

Top, middle and bottom - when talking about where the piece goes on the board.

Big and small- talk about the piece being too small or too big if the child places it in the wrong place.

