

6th November 2020

in the loop

Weekly Newsletter for Parents & Students

Welcome

So much has happened since I wrote to you last week. Of course we all now find ourselves under new restrictions, entering 'Lockdown 2.0' yesterday. Whilst we were all dealing with the usual joys of learning and teaching on a typical Wednesday the government eventually published guidance that afternoon on what the new national restrictions mean to schools. This was another, (now expected), example of extraordinarily late notice for schools to implement changes.

As a school we reassuringly already had nearly every measure in place to mitigate risk and reduce transmission so there are not many changes to inform you about. Children identified as Clinically Extremely Vulnerable will now need to work remotely and this is outlined in more detail later in this newsletter.

Face coverings are now mandatory in secondary school corridors, on school transport and in communal areas and we expect them to be worn outside if students do not maintain 2m social distance. They are still not recommended in classrooms. This presents no change for Bosworth Academy.

We are still awaiting precise clarification on extra-curricular enrichment or sports clubs as it looks like these may have to stop, all inter-school competitions will stop during this period. Activities such as group tuition, revision classes, 1:1 mentoring or interventions which operate like normal classroom lessons can continue.

As I shared with our staff in our online weekly briefing, with these new national restrictions now in place there will be less social mixing and more stringent measures outside of school for all staff, children and their families. Therefore, we should have less opportunities for our students, staff and wider community to pick up the virus and bring it into school. It is also pleasing to see that Leicester is currently not an area with increasing cases though we know this may change.

As I shared last week, we know our Risk Mitigation Plan is thorough, and though we have had positive cases in our school we have insured minimal transmission. Our attendance this Thursday was actually 0.5% higher than the same time last week with 95.4% of children in school which is the national average for schools under 'normal circumstances' and well above the current national average. I must thank all parents for supporting our school and understanding the benefits school brings; deepening learning and promoting good mental health and wellbeing.

Next week there is so much going on at Bosworth with our colourful 'Celebration of Life'. We are celebrating Diwali, which is on Saturday 14th November, with many activities taking place all week. We are commemorating Remembrance Day on Wednesday 11th November, uniting as a community to make sure that no-one is forgotten and to remember and honour those who have sacrificed themselves to secure and protect our freedom. We will all observe a minute's silence in our period 2 classes at 11am. Then on **Friday 13th November** we are holding a themed **non-uniform day** for Diwali, and to raise money for the charities; 'Children in Need', and 'Send my Friend to School'. If your child would like to participate then a **donation of £1 can be made on sQuidPay** throughout the month of November or they can **pay their tutor** on the day. The theme of the non-uniform day will be **colourful**



Continued...

outfits, and it would be fabulous if some young people wanted to come to school in their colourful cultural clothes.

There is an increase in clean shaven staff this week, as well as many more kilometers being ran than usual as our community continue to support Movember to promote men's mental health and suicide awareness. We have already smashed our target so have raised it to £7500. Please show your support or join us by donating towards #TEAMBOSWORTH at [Movember.com](https://www.movember.com).



With our NHS workers and other key workers offering continued support to all it is apt to conclude with a quote from **Florence Nightingale**, who said, **"I think one's feelings waste themselves in words, they ought all to be distilled into actions and into actions which bring results."** I'd like to thank everyone in advance for your support and participation in all that we are doing during these difficult times. Have a great, safe weekend.

Mr. Brown, Headteacher

**The greater the storm,
the brighter the rainbow!**



Free School Meals

If your child currently receives Free School Meals and is isolating, we are issuing supermarket vouchers to support you with providing lunch whilst your child is at home.

From next week, a member of our team will contact you to offer an alternative food hamper.

If you have any other concerns in supporting your child's learning whilst absent, please do contact me at the following email address jmanning@bosworthacademy.org.uk

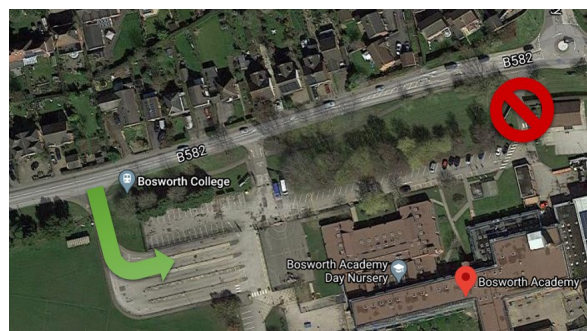
As family situations may have changed during these turbulent times your child may be entitled to receive free school meals if you receive any of the following benefits;

- Income Support
- Income-based Jobseekers Allowance
- Income-related Employment and Support Allowance
- Support under part VI of the Immigration and Asylum Act 1999
- The guaranteed element of Pension Credit
- Child Tax Credit (provided you are not also entitled to Working Tax Credit and have an annual gross income of no more than £16,190)
- Working Tax Credit run-on - paid for 4 weeks after you stop qualifying for Working Tax Credit
- Universal Credit - if you apply on or after the 1st April 2018 - your household income must be less than £7,400 a year (after tax and not including any benefits you get)

Children who get paid these benefits directly, instead of through a parent or guardian, can also get free school meals.

Please contact jmanning@bosworthacademy.org.uk if you believe your child may now qualify for free school meals.

Mrs. Manning, Associate Senior Leader

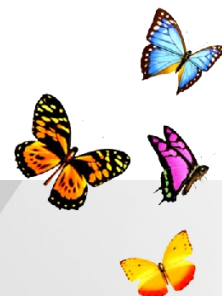


Dropping off your children

A reminder that parents should not drop off their children at our main reception as was stated in our Risk Mitigation Plan shared in August. All children arriving at school must arrive via our top entrance (by the road Forest Rise) which leads into our bus park. Here staff sanitise the hands of every single student on arrival. You can use the first two lanes to drop off your children. All students arriving at main reception will be asked to walk to the bus park entrance.

Please do not feel offended if you are asked to drive out of the school exit and come back in via the top entrance. We must keep our reception area clear during these days. Thank you for your cooperation.

Mr Dolinski, Assistant Head



TOGETHER WE ACHIEVE

Children in Need Colourful Non-Uniform Day Friday 13th November

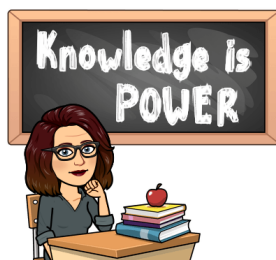
I am sure that through the last 6 months, both students and parents have developed an understanding and appreciation of how important school is. Not only for learning, but for safety, social and emotional support and a feeling of belonging.



Although children in the UK have returned to school, there are still many others around the world who are not able to access learning due to the Covid-19 pandemic, and many may never return.

At Bosworth Academy we would like to raise money to support a charity called

Send My Friend to School which works with children in the UK and across the world to help them access the education which they deserve. They believe that **education is powerful!** Not just for individual children and their families, but for whole communities, countries and the world. Education can provide stability to children who are displaced, open up paths out of poverty, reduce the likelihood of conflict, contribute to a healthy planet and is vital for long-term growth. Education is critical for the achievement of the Sustainable Development Goals. By calling on world leaders to make education a priority they aim to unleash the power of education and ensure that no child is left behind.



The international community has committed to ensuring inclusive and quality education for all by 2030. However, **262 million children are currently out of school**, and for those that are in school many are not actually learning. The situation is heightened for those groups that face increased and



intersecting barriers such as marginalised groups, children with disabilities, girls and those living in conflict situations.

In order to support the amazing work of this charity we would like to offer young people at Bosworth Academy a **non-uniform day on Friday 13th November**. A donation of **£1 can be made on sQuidPay** throughout the month of November or they can **pay their tutor** on the day. As the day coincides with our Celebration of LiFE week, the theme of the non-uniform day will be **colourful outfits**, and it would be fabulous if some young people wanted to come to school in their colourful cultural clothes.

<https://sendmyfriend.org/>

**Mrs Coulson
Lead Practitioner**



Protecting our School Community

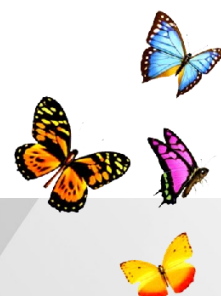
Following on from the new guidance around the second national lockdown here is a summary of the update. All students are to continue attending school unless the following applies.

- The child is **clinically extremely vulnerable** and has received a letter from PHE or their local GP
- The child is **self isolating** as a result of a positive test/ displaying symptoms, contact tracing or a member of the household has symptoms/has tested positive. This is as per previous guidance

Parents/carers or people within your household who are critically extremely vulnerable should still send students to school. This is the clear advice from the government. If your child(ren) has a letter stating they are critically extremely vulnerable please contact the year head for your child(ren). They will then be able to ensure remote learning is set up and staff are aware of their need to self isolate.

As always we thank you for your support. Our school attendance since returning has been overwhelming resulting in one of the best attendances in the local area and well above the national average during these unprecedented times.

Ben White, Deputy Head of School



TOGETHER WE ACHIEVE

Movember - please support us!

Movember is a charity initiative where people are asked to grow a moustache, or this year 'move for Movember' by walking or running 60km to raise money and awareness of testicular cancer, prostate cancer, men's mental health and suicide awareness.



The #TeamBosworth page was set up on Friday 30th October and launched with staff and students. The initial target of £500 was raised within the first two hours. At the time of writing, six days later, the total raised currently stands at £6348, a truly phenomenal figure.

If you would like to get involved yourself or simply donate to the cause then please use the link; [#TeamBosworth](#)

Mr Grest, Curriculum Leader Physical Education

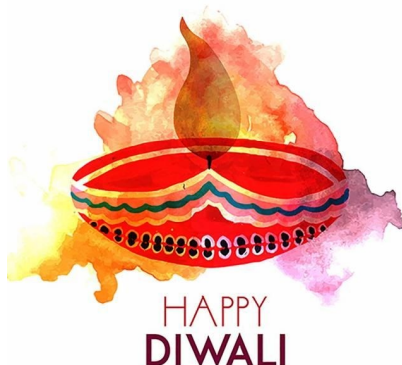
Celebration of LiFE, Colour & Light

There will be lots of exciting events happening in school during w/c 9th November to celebrate how the current situation has really brought our communities together. Social bonds have been strengthened and new bonds have been formed, to help us get through this. I think we all have a new appreciation of how precious life is, and this should be celebrated.

This year, Diwali is on Saturday 14th November. Diwali is a 5 day festival of lights celebrated by millions of hindus, sikhs and jains across the world. It marks a new beginning, the triumph of good over evil, and light over darkness. During Diwali, bright, colourful rangoli patterns are drawn on the floor outside homes to welcome gods and bring good luck.

Armistice day falls on the Wednesday of this week and will be marked in a special way to remember those that have sacrificed their lives, and to recognise those that are continuing to put their lives on the line throughout the pandemic.

Mrs. Patel, Lead Practitioner



Remote Learning if having to isolate

For those students who are isolating, but not ill with C-19, the expectation is that lessons will be followed in real time and students should join the Google Meet at the start of every lesson, ready to learn. Please can parents and carers support this by ensuring that their children are ready for school at 8.45 am.



You can read the procedure guide in full here: [Remote Learning Policy \(Lockdown 2.0\)](#)

The work for all lessons each day can be found on either Satchel One (Show My Homework) or the Google Classroom. There will be clear guidance relating to the work that needs to be produced and when and where it needs to be submitted. We expect students to engage with learning in the usual way, answering and asking questions via the video link. Teachers and form tutors will contact home if there are any issues.

After the two weeks of isolation, there will be a 'return to school' interview with senior leaders to check students' engagement whilst remote learning. Members of the senior leadership team will be able to check the quality and quantity of work submitted and identify any gaps that need to be addressed.

For students who struggled to engage during their isolation period, they will be expected to attend the compulsory after school catch up sessions. If this is the case, parents may need to organise alternative means of transport home at the end of the school day.

Our expectation is that students will engage and not want to miss out on learning.

Mrs. O'Malley, Associate Senior Leader

Keep up to date with everything that is happening at Bosworth Academy as it happens...



Follow us on social media!

TOGETHER WE ACHIEVE

Live lessons

Following substantial training and investment we are offering an ever-increasing proportion of live lessons that students can join in with at home. We have bought 50 web-cams so far and we will soon have one in every classroom. This enables isolating students to see, hear and interact with lessons fully. It also enables any teachers isolating at home to deliver lessons whilst a cover teacher supervises the class. One teacher has even done a virtual detention for students who failed to hand in their homework on time! Funny old world isn't it!

Mr Claricoates, Assistant Head Learning and Teaching

Literacy Leaderboards

BIG Thank You to parents and carers for supporting your children with their 20 mins reading a day, and 20 mins Bedrock a fortnight. We now have the overall scores for September and October, and tutor group leaders. Well Done to the winners! Please continue to encourage your children to find the time to work on their literacy at home, and whenever possible, talk to them about what they are reading/learning. You might even be able to persuade them to read aloud to you!

With thanks, the Literacy Team.
Mrs Blewitt, Ms Masih, Mrs. Starr



BOSWORTH ACADEMY SIXTH FORM VIRTUAL OPEN EVENT

Discover more about Bosworth Academy Sixth Form at our Virtual Open Event and YouTube LIVE Q&A taking place on:

16th November 2020 | 6pm

See our website for details

www.bosworthacademy.org.uk

Follow us on social media...



Virtual Sixth Form Open Evening

We will be holding a Virtual Sixth Form Open Evening on Monday 16th November at 6pm on YouTube. This will be an opportunity for you to find out more about life in Sixth Form at Bosworth Academy.

There is a link on the website where you can send in any questions you may have beforehand and we will answer as many questions as we can, live during the event. We will be adding lots more information to our website and social media channels which will include videos made by our students that will hopefully create the experience we usually offer through our Open Events and opportunities in school. To find out more follow us on social media - Instagram, Facebook, Twitter and YouTube or visit our website using this link;

<http://www.bosworthacademy.org.uk/sixthform-virtual-open-event-2020/>

Mrs. Holdback, Assistant Head and Head of Sixth Form

Celebrating the wonderful cuisines of the world

Next week in connection with the Diwali celebrations we will be offering a range of dishes from around the world. The hot food meal deal is fantastic value at £2:35; this includes a hot meal and a pudding OR drink. The menu for next week can be found here

[Foods of the World](#)

Mr. White, Deputy Head

TOGETHER WE ACHIEVE



Risk Mitigation Reminders

The support for our risk mitigation plans has been overwhelming, however as we enter our 11th week back, I thought it would be timely to remind students and parent/carers of the key points

- Students must wear a mask whilst on school transport
- Where possible the same seat must be sat on to and from school
- Students must wear a mask when moving around the school
- Students must follow the one way system
- It goes without saying that students must keep their hands clean and sanitised as much as possible.

As the weather gets colder can I remind parents/carers of our dress code expectations

- HOODIES/SWEATERS either under the blazer or over it are not permitted. This trend is growing and we will start confiscating these items if the problems persist. School jumpers should be worn at KS3 and at KS4 a fine knit sweater can be worn if [purchased](#).
- LEGGINGS are not permitted under skirts, though tights may be worn.

If students are too cold a school jumper can be purchased via our supplier OR an outside jacket can be worn when moving around the school and at break/lunch.

As always, your support is greatly appreciated.

Ben White, Deputy Head of School

Covid-19 and Staying Safe

Parents and carers must **carefully follow procedures around COVID-19**.

This allows us to begin our own track and trace system in school to identify close contacts.

The main symptoms of coronavirus are:

a high temperature – this means you feel hot to touch on your chest or back (you do not need to measure your temperature)

- a new, continuous cough – this means coughing a lot for more than an hour, or 3 or more coughing episodes in 24 hours (if you usually have a cough, it may be worse than usual)
- a loss or change to your sense of smell or taste – this means you've noticed you cannot smell or taste anything, or things smell or taste different to normal

Most people with coronavirus have at least 1 of these symptoms.

For most people, COVID-19 will be a mild illness.

If you have symptoms of COVID-19 however mild, you must self-isolate for at least 10 days from when your symptoms started. Go to [testing](#) website link to arrange a test. **You must not send children in your household to school** - please call the school to inform us. Members of the household are required to self-isolate for 14 days unless a negative test result is received and then you can end isolation. Contact attendance@bosworthacademy.org.uk with any queries.

Please follow this advice - it is vital to ensure that we keep our communities safe and avoid school having to send home many students to self-isolate for 14 days if they have been in close contact with someone who has a positive test result.

Mr. Brown, Headteacher



Bosworth Academy, Leicester Lane, Desford, Leicester, LE9 9JL
Tel - 01455 822841 | Email - office@bosworthacademy.org.uk
Website - bosworthacademy.org.uk | Head of School: Simon Brown
Follow us on social media: Twitter . Facebook . Instagram

TOGETHER WE ACHIEVE

