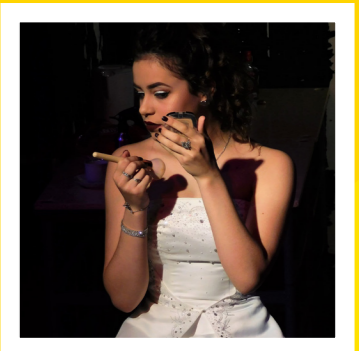
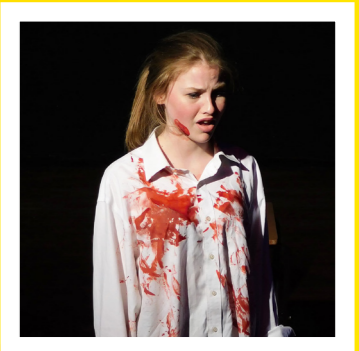


GCSE



TO LEARN TO ACHIEVE

DRAMA



Contact

Please do not hesitate to contact us if you would like to find out more information on Drama at Bosworth Academy using the contact information below:

Ms L Ravel

Bosworth Academy
Leicester Lane
Desford
Leicester
LE9 9JL

Tel: **01455 822841** Ext: **328**
office@bosworthacademy.org.uk



COURSE AIMS AND OBJECTIVES

This GCSE Drama course requires you to demonstrate knowledge and understanding of:

- different genres and performance styles;
- the ways in which meaning is communicated through drama;
- a range of staging and performance conventions;
- drama terminology and how to use it appropriately;
- how plays are constructed and realized through the study of at least one substantial published play;
- how to create, interpret and communicate a role or character;
- drama within its social, cultural and historical context;

DURING THIS GCSE DRAMA COURSE YOU WILL DEVELOP THE ABILITY TO:

- use devising skills in a range of drama contexts;
- apply practitioner style;
- select, reflective and evaluative skills in response to a range of dramatic texts;
- work collaboratively and creatively to achieve shared dramatic intentions;

COURSE AND ASSESSMENT OUTLINE:

Component 1 - Devising Theatre

Internally assessed, externally moderated. 40% of the GCSE

You will devise and create a performance piece in small groups based on a stimulus set by the exam board. Your piece will be created and performed in a style chosen by you and your group. You will keep a detailed log of the creation and rehearsal process and then extract key moments from this log to submit in portfolio of evidence. You will also evaluate your final performance in exam conditions. All 3 elements of this component will make up 40% of the final GCSE.

Component 2 - Performing from a text

Externally assessed by a visiting examiner. 20% of the GCSE

You will study 2 extracts from a text. In small groups you will stage a section of the text that you have studied. You will need to learn your lines, ensure that your characterisation is clear and use staging effectively. You will have to write down your artistic intentions for your piece to submit to the examiner before they watch and assess your piece. This performance is worth 20% of the GCSE.

Component 3 - Interpreting theatre

Written Exam. 40% of the GCSE

You will study a set text in detail. You will explore the text from the perspective of an actor, director and designer. You will also need to see and evaluate a piece of live theatre. The written exam lasts for 1 hour and 30 Minutes. You will be required to attend at least one theatre trip organised by the Drama Department.

