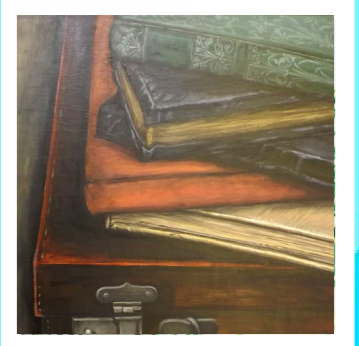
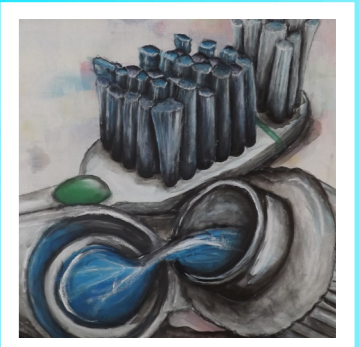


GCSE



TO LEARN TO ACHIEVE

ART



Contact

Please do not hesitate to contact us if you would like to find out more information on Art Design and Technology at Bosworth Academy using the contact information below:

Mrs C Brockhouse (Head of ADT)

Bosworth Academy
Leicester Lane
Desford
Leicester
LE9 9JL

Tel: 01455 822841 Ext: 358
office@bosworthacademy.org.uk





GCSE ART

This course consists of two units, a coursework project and controlled assessment. Over the duration of the course you will produce a portfolio of work that reflects a personal or centre advised starting point.

The controlled assessment involves preparation time during which you will research, plan and develop ideas for your own personal response to a starting point set by the exam board. You will be required to produce a final piece in a ten hour supervised exam.

The focus in this course is developing skills and techniques with a range of media and processes. Having developed new skills you will use them to produce final outcomes which reflect a personal approach to a given theme.

ASSESSMENT:

Coursework Portfolio

60%

Exam

40% (Start in January of Yr11, completion by summer half term)



Example of a Bosworth Academy Art students' work