

# WJEC



TO LEARN TO ACHIEVE

# CONSTRUCTION

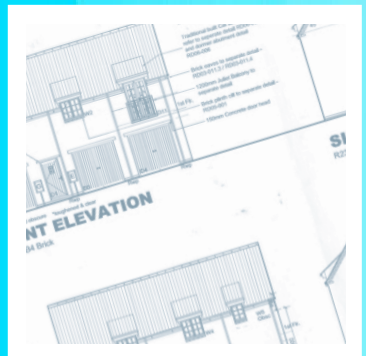
## Contact

Please do not hesitate to contact us if you would like to find out more information on Resistant Materials at Bosworth Academy using the contact information below:

**Mrs C Brockhouse** (Head of ADT)

**Bosworth Academy**  
Leicester Lane  
Desford  
Leicester  
LE9 9JL

Tel: **01455 822841** Ext: 358  
[office@bosworthacademy.org.uk](mailto:office@bosworthacademy.org.uk)





# WJEC CONSTRUCTION

Through these synoptic units, learners will use learning from the development of practical skills and health and safety requirements of construction processes and gain the knowledge and understanding needed to plan straightforward built environment development projects on a PLAN, DO, REVIEW, model that uses real life projects that appeal to learners of all abilities

## QUALIFICATION STRUCTURE

WJEC Level 1/2 Vocational Award in Constructing the Built Environment Unit Titles			
Unit	United Title	Assessment method	GLH
1	Safety and security in construction	External - Online Exam	30
2	Developing construction projects	Internal	60
3	Planning construction projects	External - Online Exam	30

## CAREER PATHWAYS

Progression to Further Education and other routes of your choice - Carpenter, Surveyor and other building trades. The academy also has close links with local employers such as Barretts which could offer further opportunities.

