

Welcome

22nd May 2020

in the loop

Weekly Newsletter for Parents & Students

I hope you and all of your family are keeping well. At least the weather has been good to us and there are even butterflies around. As we approach the end of another half term it is crazy to think that this would have been an intense week of GCSE, AS and A level exams. Our thoughts go out to all of our students in Year 11, 12 and 13 who were unable to formally sit these examinations, I know how disappointed many of you were. This week our Curriculum Team Leaders, working closely with teachers, have been finalising our 'centre assessed grades' to send to exam boards. The exam boards will moderate all school's grades which means that the final grade received by students may differ slightly from the centre assessed grade. Our students need to remember that they will have an opportunity to sit exams in Autumn if they choose to after receiving their grades in August. I have heard that over the next week schools will start to get the first few details from Ofqual about how and when this Autumn Series will be organised. At present Headteachers have no detail. I will of course share this information as soon as I do know more.

With half term next week our students must find some time to relax. No new home learning will be set during this period, though some students who have missed deadlines can use some of this time to catch-up. Towards the end of half term we will find out the government position on 'face to face' provision in school for years 10 and 12 following new scientific advice to be revealed on 28th May. Our planning for 'widening participation' to students in these years (approaching their examination year) has continued this week. As I write, School Leaders have still not received secondary guidance from the Department for Education (DFE) about 'reopening' schools. The DFE are likely considering the implications for public health if we do have an increased number of students travelling to school and attending, in addition to our Supervised Childcare provision. This makes planning incredibly challenging for us as we would like to invite in more children as soon as it is safe to do so. From the information being shared this week it is highly unlikely that any secondary school will be expanding provision to year 10 and 12 from 1st June. At Bosworth Academy we endeavour to be as prepared as we can be to open to more students when we are given confirmation that it is safe for students, staff, parents and our wider community.

This week our senior leadership team and Governing Body have completed a first draft of our 'Risk Mitigation Plan'. This will need to be updated to reflect any additional guidance from the DFE once this is made public. Our planning has involved continuing to address how we can reduce the risk of transmission of Covid-19 by applying a hierarchy of controls:

1. **minimising contact with unwell individuals - those with coronavirus symptoms, should not attend**
2. **cleaning hands often for 20 seconds or using sanitiser frequently in each classroom and stations around the school**
3. **ensuring good respiratory hygiene: 'catch it, bin it, kill it'**
4. **cleaning frequently touched surfaces**
5. **minimising contact and mixing by; changing the school environment, staggering start and end times to sessions and breaks, minimising movement and room changes.**



Our staff attended training this week to learn how to work with students safely during these unprecedented circumstances of social distancing. They also contributed towards our in situ training by suggesting further improvements to our plans to reduce transmission. Once we are clear from the government when we can widen participation we will share this Risk Mitigation Plan with you in advance of students attending.



**The greater the storm,
the brighter the rainbow!**

Continued...

TOGETHER WE ACHIEVE

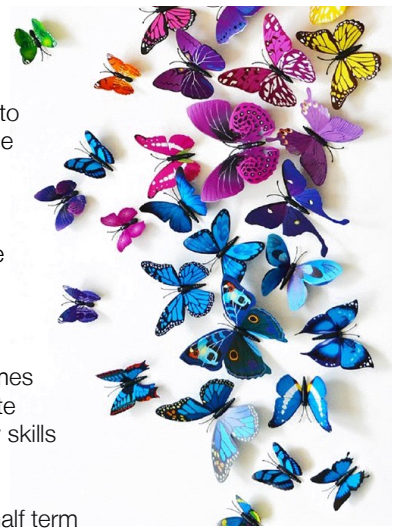
As we enter the final half term of the school academic year we would welcome your feedback on our home learning programme. We are continually collaborating as a staff of nearly one hundred teachers, to evaluate what we are doing and to improve. Already we have begun the process of responding to some of the 350 views shared so far. Here is the link for you to add comments if you have not already done so: https://docs.google.com/forms/d/e/1FAIpQLSeuRcVO3MI1yGIE8_sX0Gg7mX2OW0E_n7xtEOAv-TwmyOuSA/viewform We will share how we are responding to this in future newsletters. I am glad to see that you appreciate these weekly news items as a frequent method of communication during these 'remote' times.



I conclude this week's message by sharing this apt quote; **"As with the butterfly, adversity is necessary to build character in people."** Recent times have presented many new challenges for our young people to face and navigate their way through, though during this they will have learned many amazing new skills for the remainder of their lives.

Thank you all for your continued support and feedback – students enjoy your half term break and remain safe.

Simon Brown
Head of School



Home Learning Support for Parents!

During this period of closure for most students, our team of teaching and support staff have been working hard to send your son or daughter exciting and engaging work to develop their learning whilst they study from home.

Like you, many staff in school are supporting their children with remote school work during the closure of the building. It has certainly been many years since I have studied History or French, and I have to say my knowledge is more than a little rusty! Research published by The Sutton Trust shows that many parents don't feel confident supporting some subjects, especially at secondary level. Therefore teaching staff have put together a guide to individual subjects. It sets out topics studied in each subject in each year, and also directs you to some useful learning resources, such as BBC Bitesize. The document can be found on our website here; <http://www.bosworthacademy.org.uk/parentsupportdocumentremoteteaching/>

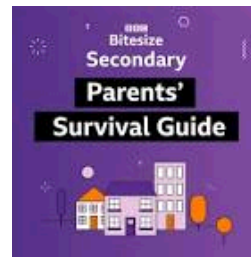
This guide also shows parents the curriculum topics which are being taught with each year group. We hope both you and your child will find this useful -

and who knows - you may suddenly discover a long lost fondness for Dickens or the mysteries of photosynthesis!



Mrs Manning,
Deputy Leader of Academy KS4

BBC Bitesize Parents' Toolkit



Wanting tips on supporting your child's wellbeing? Looking for practical advice? Or scouting for activity ideas for some lockdown entertainment? [BBC Bitesize](#)

It's hard being a parent during lockdown, so here you will find details for parents of ways of managing mental health alongside all your responsibilities during lockdown.

Be realistic and kind to yourself. It's sometimes easy not to notice how we're feeling, particularly in the hurly burly of family life. You might feel stressed, without having noticed how this started. It's good to do regular 'mind checks' about how you're feeling, but also ask how others in your family are feeling. Have gentle conversations about emotions. We promote our own wellbeing by knowing when we do and don't get things right. It's not about

getting it right all the time. It's always good to be honest and say sorry when we can. Connecting with other parents is a great idea, as is trying our best to have a daily routine. This can help us to feel reassured because we know what we expect to happen. Follow the link for more tips on well being, staying positive, and isolation inspiration.



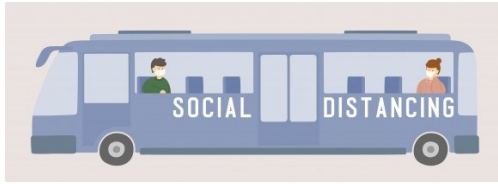
There is a primary section too including lovely advice on how to help your child cope with fear, as well as top tips on the curriculum resources available for all ages to support your child's learning.

Mrs Starr
Lead Practitioner

TOGETHER WE ACHIEVE

School Bus Update

Over the last few weeks we have been working very closely with our bus companies on school transport, both during the



closure and planning for next year. The attached letter outlines how we are going to proceed. We find ourselves in unprecedented times and our decision on this matter has very much been shaped by our ability to provide affordable transport into the future.

[School Bus Letter](#)

Mr. White,
Deputy Head of School

Supervised Childcare Provision

Our school has never been closed, we have remained open throughout the 'lockdown' for specific groups of students and children of key workers. This provision continues so do contact us (attendance@bosworthacademy.org.uk) if you are a key worker and have returned to work and require supervised childcare.

Mr. White,
Deputy Head of School

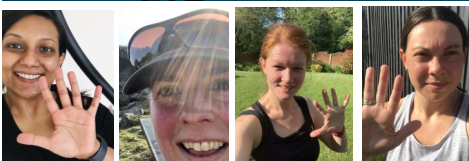
NHS Fundraiser

So far, almost 40 of our staff have got involved in this popular fundraiser to raise money for the NHS Charities Together (and to stay fit!). Nationally, over £5 million has been raised by people taking up the challenge to:

Run 5K . [Donate £5](#) . Nominate 5

Faster 5K Friday is a new spin on the challenge which encourages people to run **5km**, donate £5 and then try to beat their time every **Friday** over five consecutive weeks. However, the best thing about the original challenge is that it is accessible for everyone. If running

is not for you, you can cycle or just walk 5K, and anyone can donate via the fund raising site below. We'll keep you in the loop.



Mrs. Starr,
Lead Practitioner

No New Home Learning Week!

We have listened to the majority of parental feedback this week requesting teachers not to set any new home learning over half term. Some pieces you might notice set during the later part of this week will have deadlines during the first week back - with the aim of these being completed week beginning 1st June. Students should use this time to catch-up if they have any outstanding pieces of learning. Hopefully most students are on track and will use half term to relax, do some exercise or hobbies and maybe help you out around the home!

Mr Brown

Uniform Plea

To support students and parents having the right uniform for the last few weeks of school (*if we are able to lift the closure*) it would be really helpful and supportive for students and parents of Year 11 Leavers (or any other year groups) to donate any uniform that has been outgrown!

Uniform can be dropped off at main reception, where it will be sorted and distributed to those who need it, (observing social distancing on arrival). If uniform could be laundered and bagged, that would support the organisation of redistribution.



On our return it is vital we return to 'where we were' as quickly as possible, and getting the uniform right is critical in this.

Thank you for your support,

Mr. White,
Deputy Head of School

Joke of the Week

Why don't scientists trust atoms?

Because they make up everything.

TOGETHER WE ACHIEVE

