

April 2020

# Careers NEWSLETTER

**Bosworth**  
Academy

TO LEARN TO ACHIEVE

**Hello and Welcome to your first Careers Newsletter! The aim of the newsletter is to provide you and your parents with resources, careers advice and latest labour market information (basically, what jobs are popular at the moment in Leicester).**

During these uncertain times, to have a goal to focus on for yourself is important and rewarding especially if it is something that affects you in the near/ long term future.

During this term, we will be focussing on emailing students a careers action plan. This is useful to help you map out and learn more about careers you may or may not have thought of. You can do this even if you don't have any idea of what career to do!

[Click here to access Careers Action Plan](#)

Have a go at it and let us know how you get on, or if you need any advice.

***Set a long time ago in a galaxy far, far away, Star Wars may seem quite distant from your future career.***

Think again – there are plenty of jobs in the Star Wars universe that have their counterparts back home in the good old Milky Way – [check out Star Wars careers blog here](#).



## Career Guides

To help parents and students studying from home, there are electronic versions of all Career related Subject Guides (shown below) available free of charge. You can access them by [clicking here](#)



## Local Employers

[Labour Market Information:](#)

Key local employers across the city and the seven area districts.



## University

**Fancy a Virtual University Exploration?**

[Click here](#) to find out more!



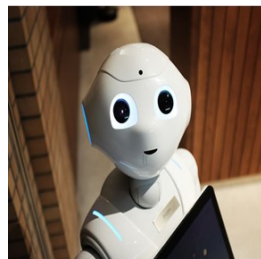
**LIFE**  
MULTI ACADEMY TRUST

inspiration innovation integrity



## Technology

Rapidly changing technology and the environmental challenges we face mean big changes for the world of work. Check out - **Future-proof jobs for each school subject** on [here](#).



## Mental Health

The **Anna Freud Centre for Children and Families** provides advice and guidance about how to help children, young people and each other to **manage their mental health** and wellbeing during times of disruption to their learning. There are also some self-care resources written by young people. See: <https://www.annafreud.org/coronavirus/>



## NHS Careers

There are over **350 job roles in the NHS**, a growing sector of work as trends show that we are living longer, but with more complex health conditions. Young people and adults can **explore the wide range of roles**, and do a fun quiz to see which roles they are best suited to on: <https://www.healthcareers.nhs.uk/explore-roles>



## Career Zone

**Career Zone:** Are you puzzled and unsure about the options you have at GCSE, post 16, post 18 and beyond? Or maybe you know pretty much what you want to do but you are after some more information which is impartial and independent? This website is for you! For your career journey at Bosworth and beyond. To support you with investigate opportunities in learning and work. [Click here for our Career Zone!](#)

