

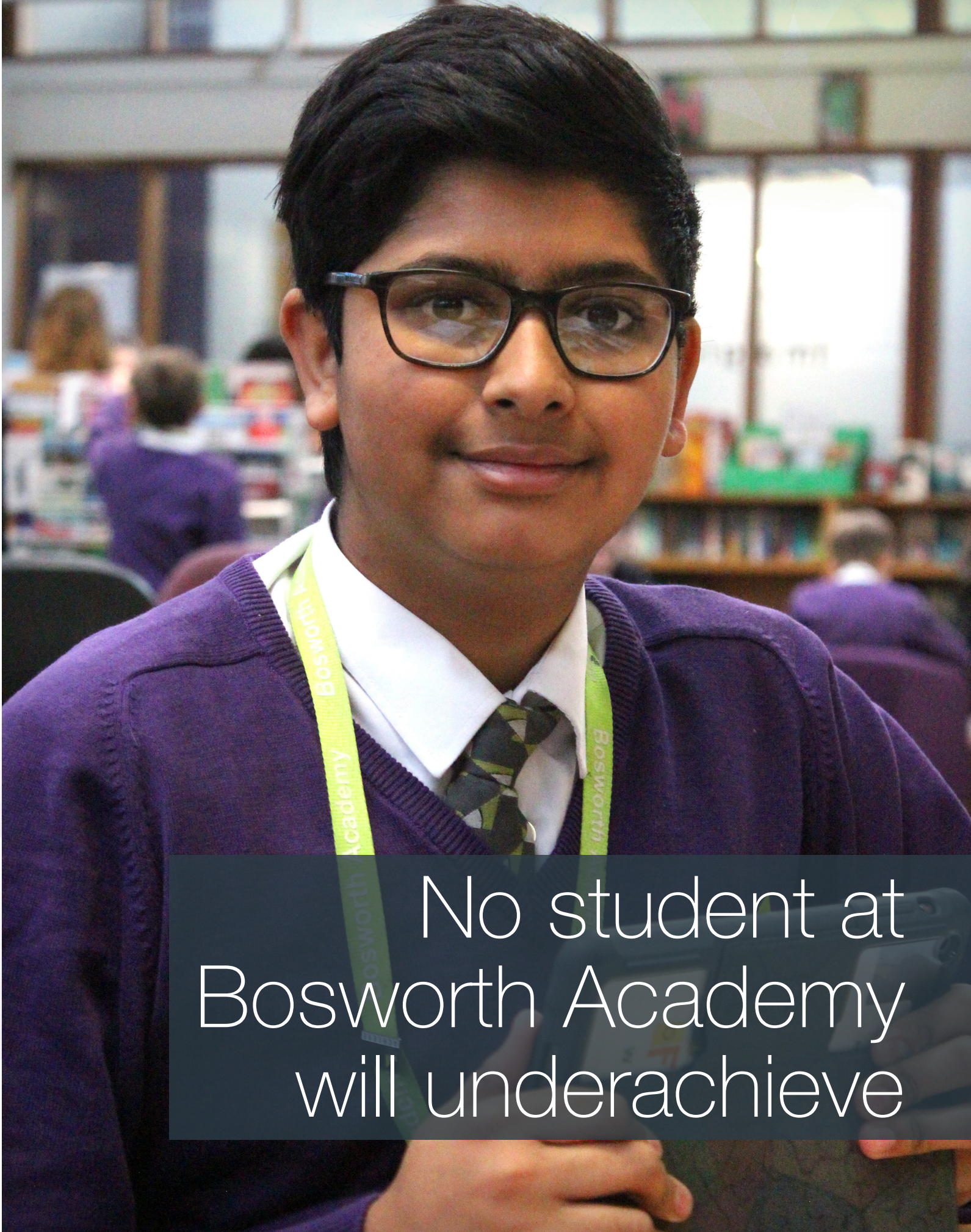


Prospectus

Years 7-11

Contents

Welcome	4
Vision, values & ethos	6
Our history, experience & facilities	8
The Laureates	10
Academic life - KS3	12
Academic life - KS4	14
Working together	16
Support	18
Post 16 Sixth Form	20
Physical education	22
Creative & Performing arts	24
Enrichment	26
Community	28
Practical details	29
Alumni	30
LiFE Multi Academy Trust	31



No student at
Bosworth Academy
will underachieve

Welcome



Simon Brown
Head of School

At Bosworth Academy, our aim is to ensure all students continue their journey into adulthood as confident, capable and successful people who can take control of, and enjoy, their future lives.

We encourage and work with students so they can concentrate on learning in a co-operative environment, valuing everyone's positive contribution and promoting a strong sense of community and responsibility towards others. Every student is important to us, and everyone should experience a first class education, with high challenges and equally high expectations.

Every child has the potential to develop and to achieve highly. It is our role as teaching professionals to foster within them a deep passion for learning. We aim to instil in our students the notion of a growth mindset; the belief that they can get better at anything through hard work, high challenge, determination and practice.

We work hard to provide the best teaching, clear guidance, and effective support, recognising the individual learning needs of each student, and personalising their experience accordingly. Our driving passion is a belief that **'no student at Bosworth Academy will underachieve'**. It is our responsibility to raise students' aspirations and continually drive home the message that you can **'be better than you thought you could be'**.

A successful education is based on partnership and we know it is vital to work with parents and the community we serve. Your child is now approaching an important transition in statutory education and must take the crucial decision of selecting the most appropriate school.

By investing time and effort in developing strong professional relationships with our family of primary schools, the UK's leading universities, as well as local and national businesses, we are confident that we can offer an exciting, ambitious and seamless pathway through Key Stage 3 and 4, to our Sixth Form, and onwards to university, apprenticeships and beyond. We are excited by the prospect of being one of only a select few institutions able to offer this in Leicestershire.

We want the best possible future for all of our students, so we know it is important to invest in them now.

Crucially, we believe that all students have enormous potential, therefore we challenge them to be the best, help realise this potential and transform this into high quality qualifications. As a result, year on year at Bosworth Academy, we are raising student outcomes across a vast range of qualifications; nine out of every ten students attain at least five GCSE qualifications at higher grades. Eight out of every ten students achieve A*-C grades in both English and maths. This is an achievement second to none both in Leicestershire and nationally. Similarly, over 80% of our year 13 students leave us to go on to university.

We are immensely proud of our Academy and on behalf of all the teaching and support staff, I'm delighted to welcome your child to Bosworth Academy, and to share their success in the next step of their journey.

Simon Brown
Head of School



Ben White
Deputy Head of School



Kathleen Baxter
Deputy Head of School

Be better than you
thought you could be



Pupils learn exceptionally well in many subjects, including English, mathematics and science.

Ofsted 2017

To meet the staff and to see the Academy in action, please call us and we will be happy to arrange a visit to welcome you. We visit our feeder schools regularly, and staff from Bosworth Academy will meet with you there if that is more convenient.

Vision, values & ethos

Vision

Bosworth Academy is consistently outstanding in both Ofsted terms, but more importantly in its delivery of outcomes for young people in, and for, our community. Bosworth Academy is an unstoppable force for affecting social mobility.

Values

'No student will underachieve' means: Outstanding outcomes for every child of every ability from every background no matter what.

'Be better than you thought you could be' means: We understand that our role is not to ensure students reach their potential, it is to help define that potential.

Ethos

We do this in an environment which is inclusive, exciting, varied and highly aspirational. The individual is recognised and celebrated. Striving for excellence and challenge in all that we do, we seek out feedback and positive criticism. We believe in the capacity for continual improvement and appreciate the role of leadership, never giving up and accepting that our work is done. We enjoy, achieve and embrace our responsibility as a force for good. We can, and will, make a difference through the empowerment of learning.

Bosworth Academy welcomes students of all abilities and backgrounds and aims to prepare them to take their place in society. We value the education of each student equally, and believe that all members of the school should feel important, and should achieve their maximum potential. The staff aim to provide a high quality of teaching and tutoring so that each student's experience at school is a positive and happy one.



Bosworth Academy will provide:

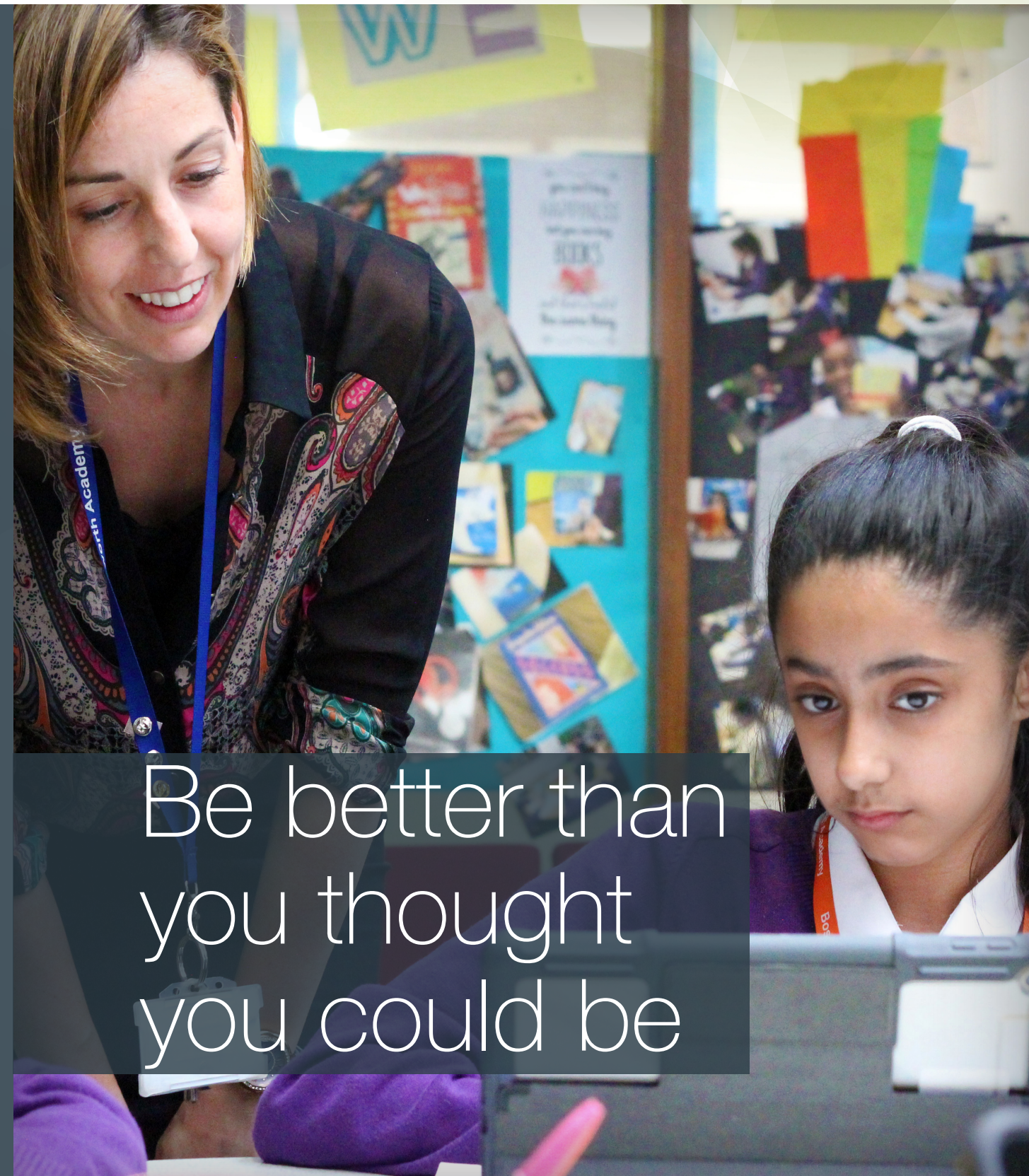
- preparation for life in an environment where everyone can aim high, be successful and secure
- individual support through a 21st century curriculum

Bosworth Academy will engage with the wider community by:

- using a full range of learning resources
- celebrating cultural diversity
- promoting high standards
- enabling participation in local, national and international communities
- positively valuing the contribution of everyone
- developing self-esteem and respect for others

We demonstrate our commitment to these statements by:

- creating varied and challenging teaching and learning opportunities
- being reflective about and, consistently developing our practice
- providing independent and collaborative ways of working
- maintaining a stimulating learning environment
- monitoring and guiding all learners
- making the best use of our resources
- developing self-reliant and high-achieving lifelong learners



Be better than
you thought
you could be



Our history, experience & facilities

Introducing Bosworth Academy

Bosworth Academy is a successful and forward looking co-educational comprehensive school comprising of the Laureates Key Stage 3 School, The Academy Key Stage 4, and The Oaks Post 16 Sixth Form, with over 1,300 students aged 11-19 in full time education.

Each year 250 new students begin their journey with us in Year 7, while a similar number of older students join our thriving sixth form in Year 12, either by deciding to remain with us after GCSEs, or as new students from other schools. Our thorough induction programmes at each point of entry aim to ensure that all students feel welcome, regardless of when they begin their journey with us.

We continue to develop and expand our out of hours learning, sport and leisure programmes, involving many local community clubs, groups and societies.

We enjoy an excellent reputation for the quality of teaching and learning in a caring, friendly and exciting environment. Our experienced, well-qualified staff and excellent facilities help us to provide a stimulating and fulfilling educational experience for everyone.

We expect high standards of our students and provide opportunities and challenges to enable students to gain the best possible exam results, and to develop as individuals.

Facilities

Situated on a large, pleasant campus on the edge of Desford, overlooking open countryside, the school enjoys the benefit of light, modernised, well-equipped buildings.

There are specialist teaching areas, which are grouped together in subject and faculty areas so that resources can be effectively utilised.

The school has embraced the many benefits that IT, digital and handheld computer devices have to offer in supporting student learning, and the whole school enjoys the support of an efficient world class IT infrastructure.

The campus areas of specialism:

- Art, Design & Technology
- Cultural Studies
- English
- ICT and Business
- Human and Social Studies
- Mathematics
- Modern Foreign Languages
- Physical Education
- Science

The Physical Education faculty's all purpose Sports Dome supplements the well-equipped sports hall, gymnasium, swimming pool and extensive playing fields.

Within Cultural Studies, students enjoy the specialist Drama studio and theatre, Music rehearsal rooms, recording studio, and Media Studies have a professional and well-equipped 'Media suite' for outstanding video and digital media production.

The Academy is committed to investment in improvements and refurbishments to create a world class learning environment.



Bosworth Academy's library, The Compass, provides resources, facilities and guidance to support and enhance the curriculum, independent learning and reading for pleasure.

It is a bright and attractive space where students can choose to work in a variety of learning zones, and teachers can work with a whole class on research projects.

Our resource collection is continually developing to provide the best books and electronic resources to support our students and our librarian is available to help them find what they need.



The popular large central hall and adjoining dining area are used by both students and community users alike. In addition, students are supported by the Maximising Learning Team (MLT) who provide a range of social and medical services.

The Oaks Centre provides social and study areas exclusively for Post 16/Sixth Form students.





The Laureates

Bosworth Academy Laureates will bring out the best in your child through outstanding teaching and learning where a personalised approach ensures every student fulfils their potential.

The Laureates is designed to ensure every student feels safe in the setting with rooms designed to facilitate all types of learning. The majority of their lessons will be in the Laureates with access to 'The Compass Information Centre' to enable research, complete group work or focus on home learning.

For subject specific learning, students have controlled access to the wide and varied whole school facilities. Bosworth Academy Laureates have embraced the value that new technologies offer in supporting learning, and every student is provided with a brand new computer tablet to use at school and at home.

The Laureates benefits from a separate well-equipped play area.

The House System

Bosworth Academy Laureates operate a five house system to encourage and inspire students, as well as fostering a sense of belonging and pride. Each house is represented by one of the leading figures from history, each with a unique contribution to our lives.

Franklin

Rosalind Franklin, chemist and X-ray crystallographer who made critical contributions to the understanding of the fine molecular structures of DNA.

Einstein

Albert Einstein theoretical physicist and philosopher of science, developed the general theory of relativity, one of the two pillars of modern physics.

Curie

Marie Curie Nobel prize winning physicist and chemist who conducted pioneering research on radio activity.

Churchill

Sir Winston Churchill Politician and former Prime Minister, inspired leader, author and historian.

Luther King

Rev. Martin Luther King, Jr, leader of African-American Civil Rights Movement, humanitarian, received the Nobel Peace Prize for combating racial inequality through nonviolence.

Transition

Moving on from primary school can be an apprehensive time, both for the children and their parents. Our transition programme is designed to smooth the process, alleviate any fears and encourage a feeling of excitement and anticipation.

We will carry out one to one interviews with every student who will be attending our school, so we can find out what they enjoy and get to know them before they arrive. We use this to get to know their needs and aspirations, and to enable us to tailor their experience.

The first two weeks of the autumn term will be set aside for an induction programme, which will help build friendships, ensure there are familiar faces in every lesson, and encourage teamwork in class as the curriculum is introduced. We will also host a welcome evening for parents, and provide a settling in report during the first term.

Each individual will be recognised for their strengths, and it is our aim that, by the end of year 7, every single student will be identified as gifted and talented in one area, and this success will be shared and celebrated. This excellence may be identified through either academic success, or enrichment and enterprise activities that we offer.

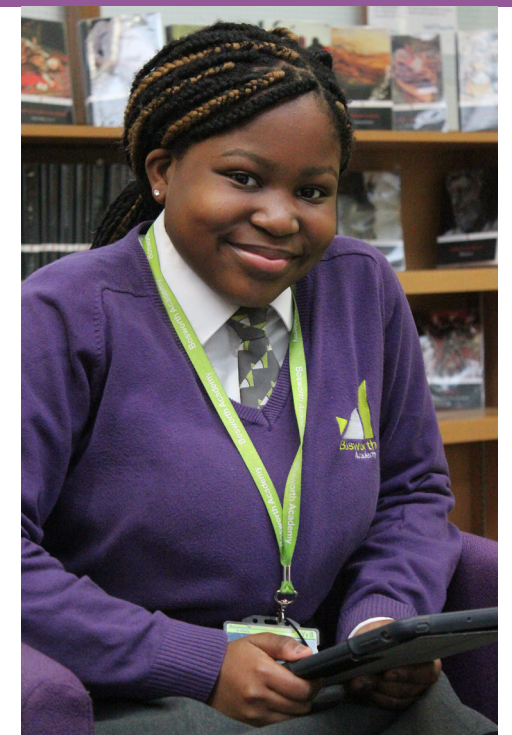
Bosworth Academy Laureates will create a strong academic foundation by broadly following the national curriculum with an unrelenting focus on English, Maths and Science. Our staff will teach literacy and numeracy in all subjects and the school will make these key subjects relevant to the real world through expeditionary learning activities throughout the year. This excellence may be identified through either academic success; or enrichment and enterprise activities that we offer.

A school within a school

The Laureates is 'a school within a school' for younger pupils. This helps new arrivals have a chance to develop their confidence as they adjust to a much bigger school. This greatly supports the welfare of the school's youngest pupils.

Ofsted 2017

We are fortunate to have Post 16 students on site who are outstanding role models for younger students. They are in education because they choose to be. They have been highly successful, and are aspiring to great things. We will capitalise on the advantages that having older students gives us to further instil ambition and high expectations, from the first day that students come to us. Ofsted recognised that our students' contribution to our community was outstanding.



The Laureates Team



Academic life

Key Stage 3 curriculum

In Years 7 and 8, the curriculum is designed to provide a balance of key skills, knowledge and values in a core curriculum of English, maths and science. On entry, all students are placed in mixed ability tutor groups. We aim for students to make maximum progress with appropriate challenge, pace and support.

The subjects that your child will be studying are:

- English
- Mathematics
- Science
- History
- Geography
- Information Technology
- Music
- Modern Foreign Languages
- Religious Studies
- Drama
- Dance
- Physical Education
- Personal Social Health Education
- Art, Design and Technology

Behaviour for learning

Good behaviour and firm discipline are the basis of a happy and productive learning environment, so we set high expectations for the standards of behaviour in our school.

We will reinforce this with a culture that celebrates hard work and accomplishment in all aspects of school life, backed up by a system of rewards and celebration assemblies that recognise the very best of our students' academic, social, creative and sporting progress. We treat our students as sensible young people who are able to take responsibility for their actions. We therefore make sure that they understand the relationship between effort and achievement, and between responsible behaviour and exciting opportunities. We have zero tolerance towards bullying.

We will not hesitate to sanction any student whose behaviour does not meet our expectations, and will act swiftly to prevent small problems from becoming big ones.



Success is celebrated and rewarded



Enrichment

We have adopted the good practice of universities with a rich and varied programme of enrichment activities which compliment the Key Stage 3 curriculum. This is a unique opportunity in Leicestershire but common place in some of the most highly regarded independent schools.

This programme provides an opportunity to follow an interest or talent through timetabled lessons as well as extra-curricular opportunities. Our popular enrichment opportunities include the Bosworth Theatre Company, Sports Leadership and World Challenge.

High expectations



Where students are happy and thrive

Academic life

Key Stage 4 curriculum

We aim to provide for all our students a curriculum that is broad and balanced, and which enables each student to progress. Every effort is made to match work to the ability of individual students, and a variety of teaching techniques are used. We encourage students to learn how to make informed decisions, and to develop self control and self motivation, so that they can move on from us with confidence and self assurance.

Our teaching week is divided into 25 lessons, each lasting one hour. A further 1 hour 15 minutes will be spent each week in assembly and tutorial time.

Years 9, 10 and 11 organisation of teaching

Teaching in Years 9, 10 and 11 is organised in classes varying in size from 10 to 30 students. Small groups are used where extra help and attention is needed or where relatively few students have chosen the subject. Students of similar ability are taught together in English, mathematics and science. In other areas students are in mixed ability groups.

The Curriculum is designed:

- to give students a comprehensive learning experience
- to meet the demands of the National Curriculum
- to keep Post 16 Sixth Form choices as open as possible
- to allow for some choice to meet individual needs

Our core curriculum is designed to provide all students with the skills and qualifications needed to progress to further education and training. In addition to the core, students choose four options from a very wide range of courses. This enables students to choose courses which best fit their own interests and learning styles.

Further details about Year 9 choices are available from our Year 9 Course Booklet which is distributed through Information Evenings for students transferring to Bosworth Academy, or by visiting Bosworth Academy.



Religious education

All students in the Laureates study religious education. In Key Stage 4 students can choose religious studies as a GCSE option. Aspects of religious education are also delivered across a number of curriculum areas.

The Academy holds no affiliation with any particular religion or religious denomination but is welcoming and supportive of members of any faith and those with no religious affiliation. Students attend an assembly once a week in their year group and this may be of a religious or moral nature.

Sex and relationship education

We understand that most students will have already been taught the facts of reproduction at Key Stage 3 and probably at home too. Our focus in Key Stage 4 is on improving understanding of issues around sexual health and relationships. The Personal, Social and Health Education (PSHE) interventions allow students to discuss and raise a variety of health and relationship issues including: safe sex, sexually transmitted infections, teenage pregnancy and contraception. We hope that young people are able to develop a mature attitude to the many choices they will need to make regarding their own health during adolescence and in adult life. Parents/guardians may formally withdraw their children from all or part of these interventions if they so wish.



Health services

Young people at Bosworth Academy have regular access to a confidential, independent counselling service and the school nurse, where they can get support and advice on a wide range of health issues.

Both agencies offer young people access to confidential information, advice and support services which are independent of the school.

If parents wish to know more about these services they should contact the Academy.

Citizenship

Citizenship education is delivered across a number of curriculum areas and in the tutor programme. Students also have the opportunity to contribute to student forums and are all involved in at least one charity fundraising event during the year.



For full details of our main courses and GCSE options see our separate course guide leaflets or visit bosworthacademy.org.uk

Working Together

The tutor

Every student belongs to a tutor group, with clusters of tutor groups overseen by a Year Head, providing a supportive structure with the emphasis on monitoring attendance, progress and individual support.

We believe that the welfare of every student is very important, and we strive to create a purposeful, constructive and successful learning environment for all students, and our pastoral care emphasises the need for trust and mutual respect in this endeavour.

Wherever possible, students stay with the same tutor until they leave the Academy.

Tutor groups provide an essential base for individuals to establish strong relationships as they grow into the responsibility of adulthood. The tutor is an important person in the life of the students, monitoring and supporting their progress, as well as providing guidance on work experience, future careers and on Further and Higher Education courses.

Home working

We expect students to engage in study at home, as it is not possible or desirable to complete the work for any examination course in the lessons alone. The amount of home working will vary from subject to subject and week to week, and our home learning policy is designed to encourage students to have the responsibility of managing their own time.

We aim to set assignments that will extend and complement the work undertaken in class and we value the support of parents and guardians in achieving this aim.

Homework is recorded electronically by staff using Smart Homework which complements our use of learning technologies such as Google Classroom. This enable us much greater flexibility when setting assignments and projects which can now extend far beyond traditional paper based tasks. Smart Homework also allows students to keep track of their progress and meet deadlines while enabling parents and guardians to remain informed about the work that has been set.

Reports and parents' meetings

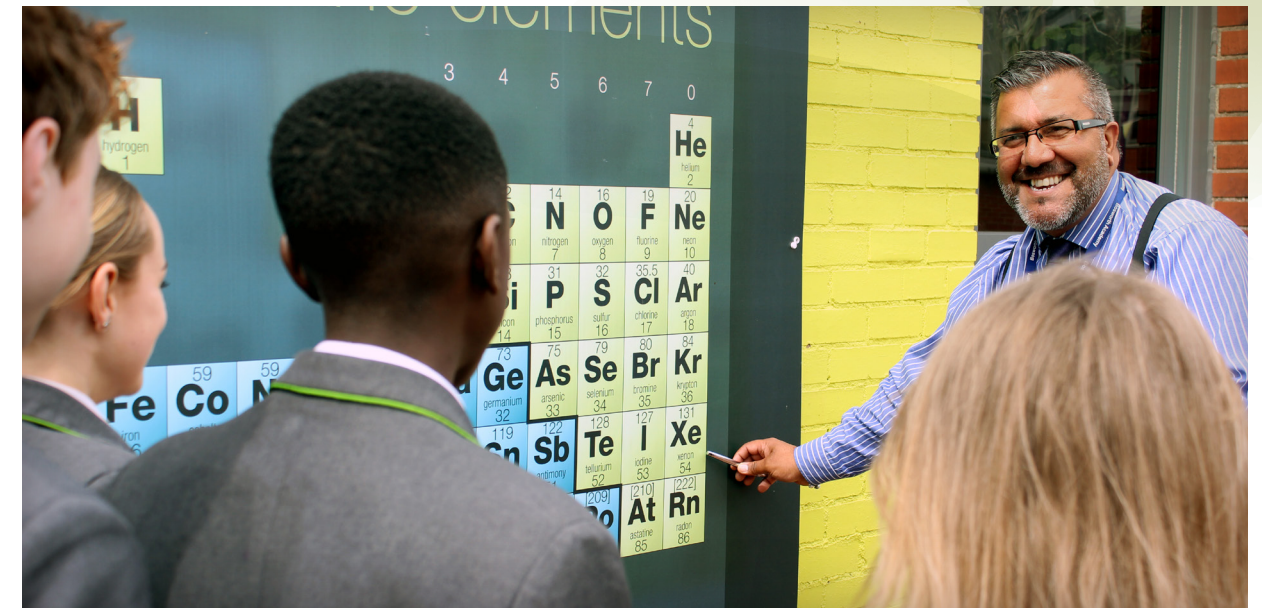
Our robust system of reporting is designed to give insight into progress and to give students helpful and realistic targets to enable them to do their best.

Monitoring of individual progress and achievement in each subject takes place every term, and tutors help students to set personal targets. We expect a record of monitoring grades to be kept up-to-date by students in their planner.

In response to parent feedback, there are six Parents' Evenings throughout the year to discuss student progress and development, and appointments are made using our online booking system.

As well as these specific occasions, parents are very welcome to discuss any aspects of a student's life at any other time, simply by making an appointment, either with the Tutor, Year Head or Subject Teacher. Similarly, parents may be contacted if a subject teacher or tutor feels particular support is needed.

There are a number of other functions that afford the opportunity to meet with Academy staff such as the Excellence Awards Evening, Post 16 Options Evening, and Higher Education Evening. Details of these can be found at bosworthacademy.org.uk



Expectations

A well organised community requires rules for guidance. We have tried to keep ours few and simple.

These are based on respect for other members of the community, politeness and good manners within the context that our older students should be aspiring to a 'respect and values' ethos. We believe that an ordered, disciplined atmosphere is the best environment for learning. Our Behaviour Policy sets out the school's expectations, and the rights and responsibilities of staff, students and parents/guardians.

Our students established the school's expectations: **'To learn to achieve'.**

Bosworth Academy is an ambitious, aspirational and confident community where everyone is expected to be:

- Respectful and fair
- Caring and helpful
- Punctual and polite
- Listeners and learners
- Appropriately behaved and dressed

What does this look like every day?

To ensure that the Academy can realise the vision and values on a day-to-day basis we have created our 'ACHIEVERS' ethos.

This allows both students and staff to see what attributes we want our students to have. The ethos also sits closely with our responsibilities as a school and the expectations of our students:



Support

Information and communication technology

Our digital network and school wi-fi infrastructure gives students and staff access to the almost limitless Cloud-based resources to support learning across the school. Students are encouraged to use mobile technology to enhance their learning and develop independent learning skills. Students can also access their work files from home through the Academy's VLE (Virtual Learning Environment) and Cloud facilities.

Running industry standard software, and state-of-the-art hardware, we aim to give students as much hands-on experience as possible using systems in order to prepare them for a world increasingly dependent upon information technology and digital media.

For more details visit bosworthacademy.org.uk



Special educational needs

Many young people have problems with learning at some stage in their school career.

Nationally, one child in five is expected to have some kind of special educational need at one time or another. Whatever the nature and cause of their difficulties, such students need extra help and support with their education.

All our students are entitled to the best educational experience we can provide, irrespective of their academic ability.

We aim to provide a climate in the Academy where students with special educational needs feel welcomed and supported. We aim for an environment where vulnerable students feel safe and class teachers, MLT and management are known to be approachable by both students and their parents or guardians.

All students on the special needs record have a pastoral link through the SENCO (Special Educational Needs Coordinator).

A copy of our policy document can be obtained from the Academy reception or bosworthacademy.org.uk

Allowing students to achieve their potential

Provision for gifted and talented students

The Academy provides additional support and opportunity to stretch and challenge the most able students. We recognise talent and excellence through two routes: in the academic curriculum subjects; and through the various enrichment activities such as sports leadership, media and music, language and craft based activities.

All such students are placed on our Gifted and Talented register and their progress carefully monitored. They have the opportunity to take additional courses, such as Critical Thinking in Year 11, and to attend special trips and visits, including universities and industry, in order to extend their learning outside the classroom. They also provide peer mentoring across the Key Stages.

We also aim to support students who aspire to reach elite status (national, international and/or professional level) in their chosen sports through our Elite Sporting Potential programme. These students tend to commit a significant proportion of the week travelling to and recovering from training sessions and competitions.

Our ESP programme is designed to provide each ESP student with bespoke support which includes having a designated trained mentor who can liaise with the attendance team and different subject areas to ensure that students are able to balance their sporting aspirations with school work. This can include more flexible timetabling arrangements where necessary.

The ESP students also benefit from being invited to workshops and masterclasses tailored towards reaching their potential in sport, and we actively nominate students from this group for national talent identification camps and recognition for awards.

Previous graduates from this programme (formerly the Junior Athlete Education Programme) include England Women's Rugby World Cup Winner, and captain of the Team GB Women's Rugby 7s team at the 2016 Rio Olympics, Emily Scarratt.

Maximising Learning Team (MLT)

The Maximising Learning Team aims to support each student to allow them to achieve their potential, and to *'be better than they thought they could be'*.

The MLT comprises the Year Heads and the Learning Support staff under the direction of the Team Leader for each Key Stage and the Special Education Needs Coordinator (SENCO).



Post 16 Sixth Form



Post 16 Sixth Form

For Sixth Form students we offer a wide range of courses and a pathway to achieve individual success, be that via a scholastic Sixth Form A Level route, or Technical

Excellence one year bridging course to enable students to work towards an improved portfolio of level 2 qualifications which may lead to either an apprenticeship or to access Level 3 courses (based on results). Over half of our Year 11 students usually choose to stay on for one, two or three years at Post 16 Sixth Form, with many students joining us from other schools.

We help students to choose the course and subjects best suited to their interests, strengths and future plans. At the Post 16 Sixth Form, students enjoy a more mature working environment in the Oaks Post 16 Centre, with their own social room and study area. Class size depends on numbers who have opted for any particular course. Each student will have had to meet the entry requirements for the chosen subjects. Our core curriculum for Post 16 students provides advice and information on the organisation of time, life skills, developing good study habits and entry into university, jobs and apprenticeships.

Please ask for a copy of the separate Post 16 Sixth Form Prospectus if you would like more detailed information about courses, or bosworthacademy.org.uk

Careers Advice and guidance

Students benefit from ongoing support from their tutors with regard to future options, learning pathways, and ongoing careers advice. In recognition of Bosworth Academy's outstanding support in careers advice, the Academy has been awarded the prestigious nationally recognised 'Career Mark'.

Bosworth Academy strongly values careers education, and employability skills are firmly embedded in the curriculum. The Academy has developed numerous links with top UK universities including Leicester and Cambridge, leading local business including Caterpillar and Next plc, as well as the broader community providing opportunities for students to progress into higher education or the world of work.



Subject expert teachers



The sixth form is outstanding. Students' achievements have continued to improve since the last published examination results.

Ofsted 2017

Physical education and school sport

Physical education is an integral part of the Bosworth experience, where knowledge, skills and values established through physical education can be directly transferred across the curriculum and into school life.

The Academy has excellent facilities for physical education and school sport, including a multipurpose sports hall with a conditioning room attached to a traditional gymnasium, a dance studio, a 25 metre indoor swimming pool, tennis courts, outdoor basketball and netball court, and extensive playing fields.

Other facilities include a covered 3G rubber crumb pitch ideal for training and invasion games, called the Sports Dome, and a 30 metre outdoor traversing wall.

The physical education department believe that everyone has a right to a positive experience of physical education and school sport.

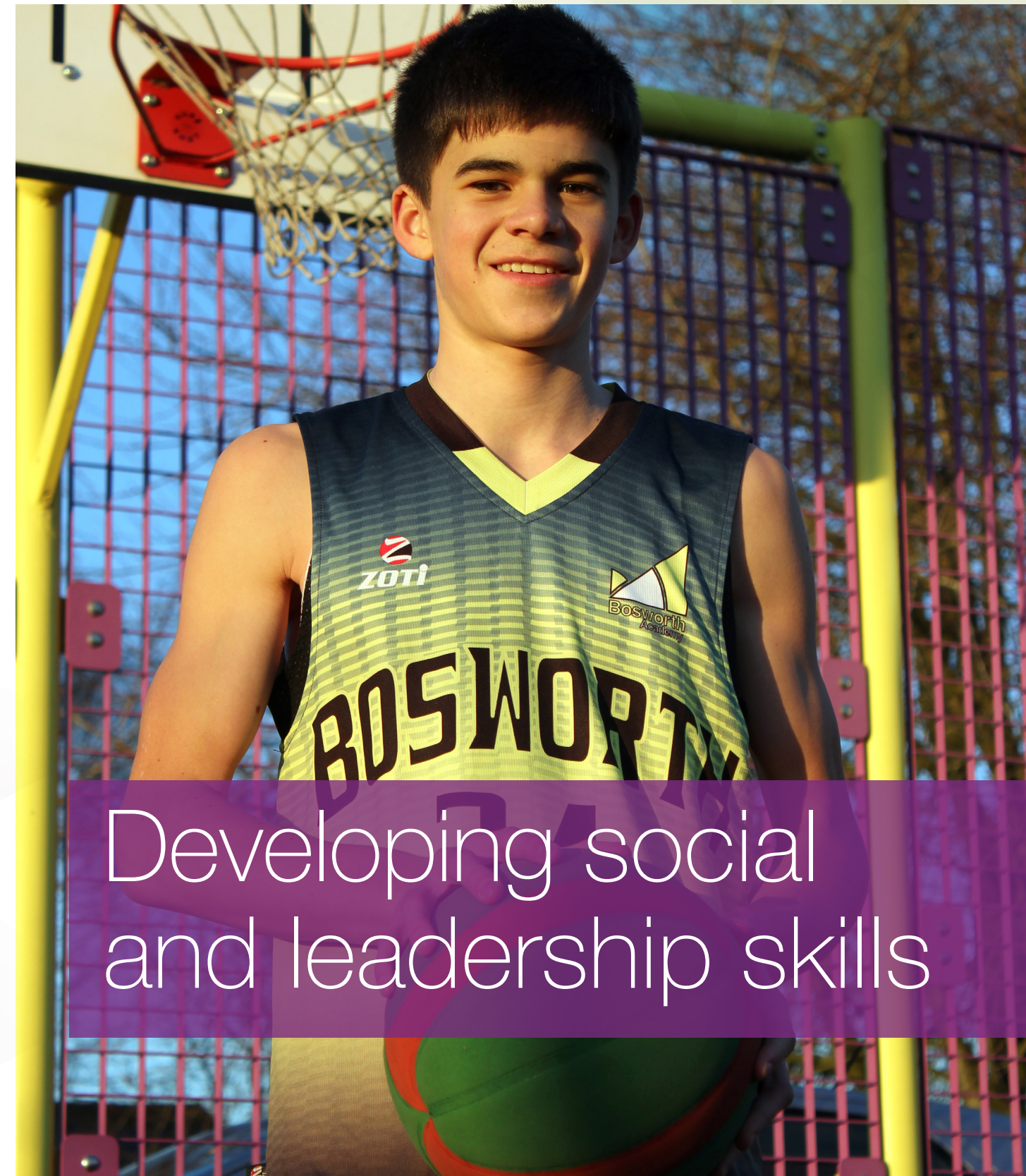
Lunchtime and after school activities provide opportunities for students of all abilities to try new activities, or continue with well established ones.

Many of our students belong to local sports clubs. Several students have links with local centres of sporting excellence, and have achieved outstanding success across a broad range of sports.

The Academy believes physical education is not just about physical ability, it helps to develop interactive social communication and leadership skills which play an important part in life.



Happy, healthy and well-rounded students



Developing social and leadership skills

Creative & Performing arts



Performing arts at Bosworth Academy

We have a thriving culture of performing arts at Bosworth Academy which comprises of lessons in drama, dance and music as well as many enrichment and extracurricular opportunities.

You will have the opportunity to join 'Bosworth Theatre Company' as well as acapella singing groups and 'Elevate Dance Company' to name just a few! We have a range of excellent facilities including a studio theatre and a recording studio. These facilities are available to book at lunch times and after school for you to rehearse for exams, practice for performances such as our regular 'Live Lounge' sessions or just for personal improvement. Live Lounge is an opportunity to perform to a small audience at a lunchtime on a regular basis and is a great opportunity to build confidence and show your skills.

We are working towards our Artsmark as a whole school, and as a result we are offering the 'Arts award' for independently motivated students who are passionate about the arts. Artsaward is a series of highly valued badges of achievement that take you from Bronze to Gold, with the Gold award being worth 35 UCAS points.

Other opportunities include a range of peripatetic Music lessons which are offered during the school day. The Academy is regularly visited by drama groups, artists and musicians, enabling students to gain experience of working alongside professionals. We also have a well established tradition of school concerts and showcase evenings as well as trips to local and West End theatres.



**We're working
towards Artsmark**
Awarded by Arts
Council England



Developing confidence and resilience

Enrichment

Field trips, educational visits and residentials

Bosworth Academy provides many opportunities to visit and learn beyond the classroom, and actively encourages students to gain an understanding of their local history and cultural heritage, and its relevance to today's society. There are regular educational visits organised to theatres, museums, sporting events, and places of interest as an integral part of the curriculum. Whole school project based learning, exemplified by the Leicester Forest project, engages students across year groups to investigate and discover the rich social history of the local area, thus bringing subjects alive and complementing the curriculum and exam specifications.

The Academy actively promotes a culture of residential experiences and learning beyond the classroom. We also offer a range of residential experiences open to all year groups that have cross curricular appeal, such as the annual expeditions organised by World Challenge.

The Enrichment Programme has also been closely linked to student rewards and recognition at the end of both winter and summer terms.

Careers education, guidance and work experience

Careers education forms an integral part of the curriculum at Bosworth. The Academy is keen to promote contacts with local, national and international employers. As well as dedicated lessons as part of the PSHE programme, students are offered a variety of opportunities to enable them to gain the knowledge they need to make informed decisions for the next step in their education and future career pathway.

Students benefit from access to a qualified careers adviser, an in-house careers zone website as well as various events during their time with us. Successful initiatives include an annual careers fair where students opt in for workshops covering a wide range of sectors, a mock interview in front of local employers, access to work experience opportunities and contact with former students throughout alumni directory. There are also a number of talks and visits organised through subject areas.

The Academy is involved in the Careers Enterprise Ambassador scheme where schools are linked and work closely with the CEO of a local company for the benefit of our students. The quality of our careers programme has been recognised by the Careers Mark award which is a rigorous process conducted by external assessors. We successfully gained revalidation in 2017.



Out of hours learning

Students at the Academy benefit from the school's long history of providing a range of sport, health and fitness and extra-curricular classes to local community users as well as students. This has led to a mix of activities being enjoyed by members of the wider community, and so enriches the learning environment. We believe that learning is a life-long activity.

There is an on-site nursery run by the Academy and a Children's Centre has been based on the Academy site since 2008.

Our Out of Hours Sports Programme continues to provide opportunities to be physically active. We work in partnership with a range of sports clubs, teams and fitness organisations to offer provision for local users.

The Academy offers a programme of health and fitness activities that focus on participation and enjoyment for adults and children of all ages, including holiday clubs.

The school's enrichment and extra-curricular programmes prepare pupils well for life in modern Britain.

Ofsted 2017



Pupils receive high-quality impartial careers advice which helps them make good choices about what to do after Key Stage 4. Almost all pupils, including disadvantaged pupils, go on to worthwhile destinations at the age of 16.

Ofsted 2017

Community



Collaboration and involvement



Links with the community

Students are encouraged to become involved with the wider community in a variety of ways.

Bosworth Academy's long standing links with the wider community including business, social, leisure and educational establishments, allow students to benefit from involvement with a broad and varied range of groups. This collaboration helps to develop students into successful and engaged members of the community.

Awareness and fund-raising in relation to local, national and international charities have become regular features of Academy life. A tutor group based fund-raising programme has been established where different tutor group's 'adopt a local charity' to support for the year. This activity includes students researching and gaining a fuller understanding of how their chosen charity operates, allowing students to become more closely engaged. The Academy has links with partner schools across Europe and worldwide.

The Academy uses a variety of strategies in order to receive feedback and comments from students regarding Academy policies and issues. Focus groups and the Student Voice offer suggestions on improving the environment, teaching and learning, and students and parents are encouraged to participate.

Putting the Academy at the heart of the community

The outstanding facilities of the Academy are made available to local clubs, societies and groups providing a rich opportunity for students to experience learning, socialising and working with people of the community.



Practical details

Admissions

The usual September admissions procedures for 11 year old students are administered by Leicestershire County Council. There are a number of criteria which are applied to such admissions to prevent the school from becoming over-crowded.

This criteria is subject to change over time, therefore it is **important to refer to [bosworthacademy.org.uk](https://www.bosworthacademy.org.uk)** for the latest information regarding admissions.

Dress code and uniform

Students benefit from a practical and attractive uniform

KS3 Laureates

- Grey skirt / tailored trousers
- White shirt
- Laureates sweater
- Black or white socks / tights
- Sensible, formal black shoes
- School tie

KS4 Academy

- Grey skirt / tailored trousers
- White shirt
- Bosworth Academy sweater (recommended)
- Bosworth Academy blazer / jacket
- Black or white socks / tights
- Sensible, formal black shoes
- School tie

Full details of uniform and dress code, along with access to the on-line shop is available via **[bosworthacademy.org.uk/uniform](https://www.bosworthacademy.org.uk/uniform)**

All students are required to wear a lanyard in school containing their personal ID card, which also functions as an access swipe card to various areas within the school, a bus pass and a cashless catering card. All students will need to bring a suitable bag.

PE kit is compulsory. It is essential that students have a complete change of clothes that is clean and suitable for any activity, including appropriate footwear. In some practical lessons students are advised to wear protective clothing in the interests of safety and hygiene.

Catering

The Academy has designated Healthy Schools status. Our canteen operates a cashless catering system, with a choice of hot meals, sandwiches and snacks. Alternatively, students may bring a packed lunch. Students must only eat or drink in the designated areas.

Complaints procedure

The Governing Body has produced guidance on procedures to be followed should a parent wish to make a complaint. This is available on the Bosworth Academy website at **[bosworthacademy.org.uk](https://www.bosworthacademy.org.uk)**

We would always like to feel we are an 'open' school, welcoming parental contact even if it is critical. In the first instance, we suggest you contact the Head of School, who will listen sympathetically. We have usually found that parental anxiety is immediately reduced after contact has been made.

Personal belongings

The Academy accepts no liability for loss or damage to personal belongings, and so we encourage students not to bring valuables into school. Incidents of suspected theft should be reported to the police by parents/carers.

Bosworth Academy is a non-smoking school. Staff are authorised to confiscate alcohol or cigarettes that are brought onto the site, and parents/carers will be contacted immediately.

Catchment area and transport

Students are welcomed from both inside and outside the traditional catchment area. Transport to and from the Academy can be provided by the Academy transport team, for details and eligibility **[bosworthacademy.org.uk/parents/transport](https://www.bosworthacademy.org.uk/parents/transport)** or contact the Academy.

Mobile devices and valuables

The use of mobile technology and devices, when used appropriately in lessons is encouraged. However, devices will be confiscated if used inappropriately. The Academy accepts no responsibility for loss or damage to such articles under any circumstances.

Anti-bullying policy

Conflict Resolution and Personal Safety

Recent research suggests that there are people with the potential for bullying and harassment in all organisations. In partnership with students and parents, we are committed to providing a safe and secure learning environment where bullying or harassment, in any form, is unacceptable. Bullying can be either a deliberate desire to hurt another, or a pattern of behaviour that puts others under stress. We recognise that not all bullying incidents are the same. We are committed to dealing with any incidents quickly, in a firm and fair manner, with an aim to eliminate bullying altogether.

Induction

At Bosworth Academy, we work with the whole family of schools in our area concerned with 5-19 education. There are meetings of teachers from the various schools to plan and work within subject areas. The school holds introductory Parents' Meetings and Information Evenings with all new students and parents. Across the year, the Academy hosts a series of Open Events for students and parents to visit the school and discuss course choices and options.

All prospective students are interviewed by a member of staff before joining the school. This enables us to start to get to know incoming students, and allows them to ask questions and become more confident about their new school.

Later in the summer term, new students spend an Induction period at the Academy. This gives them the opportunity to look around, meet their tutor, experience Bosworth Academy lessons and become more familiar with their new school. For full details visit **[bosworthacademy.org.uk](https://www.bosworthacademy.org.uk)**

The information provided in this prospectus is accurate at time of print, however please refer to [bosworthacademy.org.uk](https://www.bosworthacademy.org.uk) for the latest updated data.

Alumni



Jonathan Pesic Smith
Neuro Surgeon



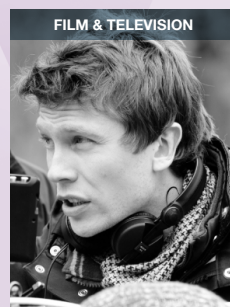
Lucy Wells
Solicitor - Sheffield



Ollie Willis
Brand42, Design Agency



Tamsin Greenway
England Netball Player
Coach and Pundit



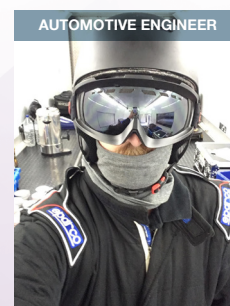
Ben Cookson
Film Script writer
and Producer



Emily Scarratt
Team GB Women's
Rugby 7s Captain



Tessa Birch
Director of Textiles
Liberty London



Jack Bloxham
Aston Martin
Special Projects



Dr Sian Henley
Research Scientist
Antarctica

Bosworth former students

For almost 50 years Bosworth Academy students have been achieving outstanding success in both academic results, as well as enjoying rewarding careers across numerous industry sectors from medicine to music, from engineering to economics.

Through work placement, volunteering or employment, former students are very supportive and keen to keep in touch and help.

The annual Excellence Evening is another example of former students acting as role models for our current students, helping raise and drive aspirations. Ex-students present awards at both Key Stage 4 (16) and Key Stage 5 (18) that carry their name as 'Alumni' who have gone on to excel in their chosen field, many acknowledging that the passion for their subject and subsequent career was inspired by their experiences and opportunities created at Bosworth Academy.

Former students who have achieved outstanding success in both sport and medicine have returned to address the staff, offering them an insight into life beyond Bosworth Academy and how our learning can continue as a result of their achievements and experiences.

The Heroes project, and 'Hall of Fame' it generates, has become a rich source of knowledge and inspiration for our current students to draw upon.

Bosworth Academy is part of

LIFE MULTI ACADEMY TRUST

Inspiration Innovation Integrity

Vision

- We have a compelling desire to provide high quality, personalised and rounded education for everyone, right in the heart of our local community. We believe that no school can be deemed successful unless all those around it are also successful, popular and flourishing. Hence we believe that dynamic, mutually accountable collaboration and challenge between local schools as members of the LIFE MAT is the cornerstone of our future success.
- Each school is seen as a leader of and vital to its local community; each school is regarded as fundamental to the identity of its surrounding community.

Values

- Ensuring that every student achieves positive, life changing outcomes.
- Providing a whole education; academic excellence co-existing with an exceptional commitment to activity beyond.
- The relentless pursuit of excellence by; expecting this of every person, every day; recognising and celebrating behaviours that lead to great progress, and promoting and celebrating elite performance inside school, and in the wider world.
- Valuing the diversity and qualities of our staff and students.
- Ensuring that all students and staff feel known, appreciated and supported.
- Committing whole-heartedly to collaboration within, between and beyond our academies.

Mission

- Outcomes equal to the best nationally and internationally for every school and every child.
- Every child receives a truly rounded education resulting in a strong moral compass, a globally competitive skill set, and a confident sense of self.
- Every school is a hub for community activities, a centre for extended services, and a source of immense pride for students, their families and other local stakeholders.
- Providing high quality buildings, engaging classrooms and excellent sporting facilities.
- Delivering innovative learning resources and materials.
- Ensuring a well-disciplined and caring environment.
- Exploiting cutting edge technologies to expand the opportunities for students, staff and our community to benefit from learning in a digital age.

Bringing learning to life

Where will Bosworth Academy take you?

Contact

Please do not hesitate to contact us if you would like to arrange a visit to the Academy; we would be very happy to show you around. You are always welcome to telephone if you have any questions you would like to discuss with us.

Bosworth Academy
Leicester Lane
Desford
Leicester
LE9 9JL

01455 822841

office@bosworthacademy.org.uk

bosworthacademy.org.uk

Head of School:
Simon Brown

For every step of their journey...



KS3

Ages 11–13
The Laureates



KS4

Ages 14–16
The Academy



Sixth Form

Ages 16 plus
The Oaks



Twitter

[@bosworthacademy](https://twitter.com/bosworthacademy)



Facebook

facebook.com/BosworthAcademy



YouTube

YouTube.com/BosworthAcademy