



EDWARD PEAKE

JULY NEWSLETTER

THE PEAKE POST

'LIVE, LOVE, LEARN'

"I WILL INSTRUCT YOU AND TEACH YOU IN THE WAY YOU SHOULD GO;
I WILL COUNSEL YOU WITH MY LOVING EYE ON YOU."

PSALM 32:8

Key Dates

Thursday 5 September

Pupils return to school

Tuesday 17 September

School photographs day

Tuesday 14 October

Meet the Tutor Evening

Monday 28 October

Half Term

Monday 4 November

Pupils return to school

Headteacher Message

As we close our final academic year as a middle school and begin our evolution into a secondary school, I want to thank our community for their support both thus far and those of you who will be continuing to support us next year. What a final year it has been!

We all enjoyed celebrating together at our 'Peake Fest' event - thank you to the many of you that came along. It was a bit chilly, but we loved spending time with you. We look forward to welcoming many of you at our final Awards Assemblies on Friday - the first time that we have done it in this format but going forwards, we will be making many changes like this. Don't forget that if you have got a good idea, we would like to hear from you!

In September, our pioneering year nine will return looking smart in their new blazers and ties - we are so excited to see our new uniform on you. Years 6, 7 and 8 - you will get your new blazer gift once you reach year nine.

We have got so much planned for you all and there is such a lot to look forward to. There is much that will remain the same. Edward Peake will retain its ethos and vision of being a fully inclusive Church of England school where we all 'Live, Love and Learn' together with our community at the heart of all that we do.

Staff News

At the end of term, it is always with mixed emotions that we say "Goodbye and thank you" to some of our staff as they move on and "Welcome" or "Congratulations" to others as they join us or are promoted to new posts.

Goodbye and thank you to:

Mrs Thorn
Miss Mall
Mrs Crighton-Rook
Mr Hodgson
Miss Mortier
Mrs Gibson
Mrs Sermons
Mrs Crook

Hello and welcome to:

Miss Goodwin – Lead for PE
Mr Hill – Lead for Music
Mrs Sherman – Lead for Computing
Mrs Brown – Science Teacher
Mrs Baumber – Teaching Assistant
Mrs Anderson – Teaching Assistant
Mrs Proctor – Teaching Assistant
Miss Chennells (Apprentice)
Mr Fisher – (PE Apprentice)
Ms Warren – Perri- SEND Admin
Miss Cameron – Administrator
Mrs Curtis – Receptionist/Clerical Assistant
Mr Whitty – Cleaner

Term Dates 2024 – 2025

September 2024							October 2024							November 2024							December 2024						
Mon	2	9	16	23	30		Mon	7	14	21	28		Mon	4	11	18	25		Mon	2	9	16	23	30			
Tue	3	10	17	24			Tue	1	8	15	22	29	Tue	5	12	19	26		Tue	3	10	17	24	31			
Wed	4	11	18	25			Wed	2	9	16	23	30	Wed	6	13	20	27		Wed	4	11	18	25				
Thu	5	12	19	26			Thu	3	10	17	24	31	Thu	7	14	21	28		Thu	5	12	19	26				
Fri	6	13	20	27			Fri	4	11	18	25		Fri	1	8	15	22	29	Fri	6	13	20	27				
Sat	7	14	21	28			Sat	5	12	19	26		Sat	2	9	16	23	30	Sat	7	14	21	28				
Sun	8	15	22	29			Sun	6	13	20	27		Sun	3	10	17	24		Sun	1	8	15	22	29			

January 2025							February 2025							March 2025							April 2025						
Mon		6	13	20	27		Mon		3	10	17	24	Mon		3	10	17	24	31	Mon		7	14	21	28		
Tue		7	14	21	28		Tue		4	11	18	25	Tue		4	11	18	25		Tue	1	8	15	22	29		
Wed		1	8	15	22	29	Wed		5	12	19	26	Wed		5	12	19	26		Wed	2	9	16	23	30		
Thu		2	9	16	23	30	Thu		6	13	20	27	Thu		6	13	20	27		Thu	3	10	17	24			
Fri		3	10	17	24	31	Fri		7	14	21	28	Fri		7	14	21	28		Fri	4	11	18	25			
Sat		4	11	18	25		Sat	1	8	15	22		Sat	1	8	15	22	29		Sat	5	12	19	26			
Sun		5	12	19	26		Sun	2	9	16	23		Sun	2	9	16	23	30		Sun	6	13	20	27			

May 2025							June 2025							July 2025							August 2025						
Mon		5	12	19	26		Mon		2	9	16	23	30	Mon		7	14	21	28	Mon		4	11	18	25		
Tue		6	13	20	27		Tue		3	10	17	24		Tue	1	8	15	22	29	Tue	5	12	19	26			
Wed		7	14	21	28		Wed		4	11	18	25		Wed	2	9	16	23	30	Wed	6	13	20	27			
Thu		1	8	15	22	29	Thu		5	12	19	26		Thu	3	10	17	24	31	Thu	7	14	21	28			
Fri		2	9	16	23	30	Fri		6	13	20	27		Fri	4	11	18	25		Fri	1	8	15	22	29		
Sat		3	10	17	24	31	Sat		7	14	21	28		Sat	5	12	19	26		Sat	2	9	16	23	30		
Sun		4	11	18	25		Sun	1	8	15	22	29		Sun	6	13	20	27		Sun	3	10	17	24	31		

EVENTS

BLUE SPACE PROJECT

On Monday 3rd of June students from year 5 undertook a week-long project called Our Natural Blue Spaces in collaboration with Bedford Creative Arts and artist Kremena Dimitrova.

The Monday started with a stroll to the River Ivel where the students considered the journey they took, the flora and fauna that they saw and how they felt by the riverbank. Over the course of the rest of the week they participated in a variety of different artistic activities including lino printing, tracing,

watercolor painting and blackout poetry and this culminated in an art exhibition on the Friday afternoon of which parents were invited to attend.

The staff and students thoroughly enjoyed their week and look forward to seeing our finished artwork at the Linslade Canal Festival on Saturday the 27th of July.



BOTANICAL GARDENS

As part of their studies on the 'Amazing Adaptations' topic in humanities, Year 6 took part in an educational visit to Cambridge Botanical Gardens.

As well as enjoying fantastic enrichment activities in the museums, year 6 will also had the opportunity to observe real world examples of themes discussed in lessons.

GEOGRAPHY FIELDWORK

As part of their studies on the 'Dynamic Landscapes' topic in Humanities, Year 8 took part in an educational visit to the River Ivel, Biggleswade.

This fieldwork gave year 8s a fantastic opportunity to demonstrate practical geography skills in a local setting.



EVENTS

KAPLA CLUBS

KAPLA Clubs School workshop is a unique, 3D hands on learning activity where every single child participates. Year 6 classes worked on a specific construction under the guidance of a KAPLA expert. At the end of the day, the children had their own unique exhibition, a sort of a museum display, showcasing each child's artistic contribution to a monumental masterpiece.



SUMMER CONCERT

This was a wonderful informal occasion, and in particular a chance for our pupils learning an instrument to show what they have accomplished over the last year.

The steel band, choir, orchestra and our own rock band performed to great acclaim.

A MIDSUMMER NIGHT'S DREAM

The one-man show (with volunteers from our audience) took place over the morning's lessons, and the children were engaged and excited, seeing what they have been studying in class come to life in front of them. The children had a great time, no more so than the 'actors' playing various parts in the story.

Many children up and down the country find Shakespeare a challenge, and Mr Glenn has done a lot to dispel some of those attitudes. Well done to him and well done to year 7, who did so well that morning, listening and getting involved.

We hope to see Mr Glenn in school again next year. Also a big thank you to Mrs Smith, the librarian, who went to all the trouble of booking Mr Glenn in.



SPORTS FOR ALL DAY

'Sport for All Day' marked the culmination of the house sport calendar. All pupils competed for their house in a number of different sports during the day.

The activities ranged from traditional athletics events and team sports to more diverse activities such as board games, bowls and OAA problem solving.

Albone were the winning house of Sports for all day 2024.



FUN RUN 2024

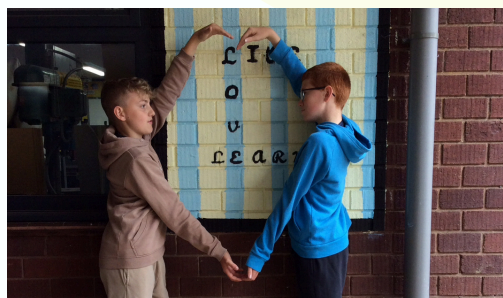
The 'Annual Fun Run' is where each house start and participate in the event at different locations around the course. The 1 km route will allowed pupils to count their laps and convert them into kilometres. Many children and staff participated in fancy dress including pupils dressing up as staff and staff dressing up as Mario Kart characters.



VALUES DAY 2024

On Values Day the whole school community had a day to consider our Christian values in greater depth during the day's activities. We joined St Andrew's Church in supporting 'Hands at Work' and in particular a care point in Mafambisa, South Africa.

On this day, the children and staff came to school in the colours of the South African flag (black, green, yellow, white, red or blue).



PEAKE FEST 2024

This celebration event was a wonderful event for pupils, families, and staff to enjoy music, fun, and games as we reminisced, celebrated the present, and envisioned an inspiring future. This event will allowed us to celebrate with pupils who are leaving the school at the end of the current academic year.

Pupils enjoyed an inflatable obstacle course, net a duck, penalty shootout, karaoke, football, and had the opportunity to buy items from our vendors.

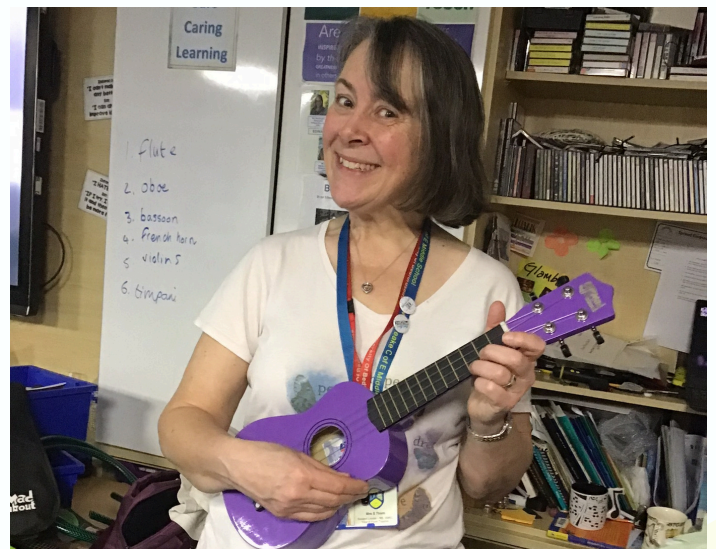


Huge thank you to our vendors

Name	Website or Email	Phone Number
King Bounce Alot	https://www.kingbouncedalot.co.uk/	07414 299290
Biriyani Boy	https://biriyaniboy.co.uk	07564 550414
Joeys Cafe Express	joeysexpresscafe@gmail.com	07957 242836
Really Awesome Coffee	stneots@reallyawesomecoffee.co.uk	0333 577 5513
Mr Ice Cream Man	fordyjffl@hotmail.co.uk	07539 723318

MUSIC AT EDWARD PEAKE

Mrs Thorn is retiring from teaching at the end of this term after a number years in teaching, 13 of which were at Edward Peake. This year has been filled with musical performances and wow, have they been amazing! We wish Mrs Thorn the best in her next adventure she will be missed by all the pupils and staff.



SUMMER READING CHALLENGE

9 JULY – 7 SEPTEMBER

This event organised by The Reading Agency and the UK public library network is the UK's biggest annual reading promotion. The challenge invites children to read six library books or more during the summer holidays, from any of the nation's libraries.

Each child will collect rewards for the books they read and will be awarded a certificate and a medal for reading six books.

Those completing the challenge will then be entered into a lucky dip at their library for the chance to win a £70 voucher to The Works, which sells books, arts and crafts.

Children can sign up at any library, at any point in the summer from 19 July.

Please encourage your child to join up as this will create an opportunity to enrich your child's reading and comprehension skills whilst boosting their reading for pleasure.

GET CAUGHT READING IN AN UNUSUAL PLACE

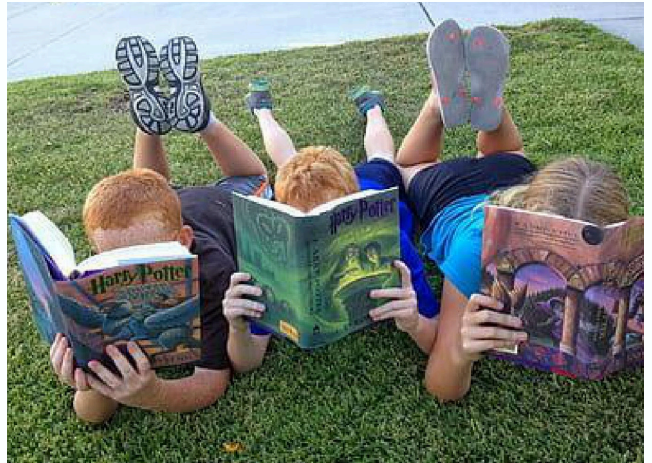
With six glorious weeks of holiday ahead why not encourage your child to indulge in some reading?

I would like them to submit a photo of themselves reading a book/comic/newspaper in an unusual place. It can be anywhere – from a treehouse in your back garden, a field of poppies to wherever they might find themselves on holiday. Try to include the cover of the book they are reading in the photo. The most imaginative will receive a £10 book voucher.

The photos will be displayed in the library on our return in September – creating happy memories of summer 2024.

Please send to info@edwardpeake.beds.sch.uk

Happy reading and happy holidays.



STAFF & PUPIL ACHIEVEMENTS

Message from the PE department: If parents have any old football boots that they no longer need could we ask that you please donate them to the school in order to help our families in need.



SUMMER JONES

Well done Summer who has done so well in her dancing this year. On July 7 Summer attended an ADFP dance competition in Thame.

It is really hard competition with Summer having to dance many recalls.

All of Summer's hard work paid off and she came and impressive 2nd out of 29 dancers in Street dance.

EMILIA DAVIDSON

Emilia took part in the Drama Kids end of year performance at the Gordon Craig Theatre in Stevenage.

Emilia won an award for her achievement and rocked it on stage.



SURBI BOSE

Surbi has been elected to be part of the UK youth parliament. This incredible opportunity will take her all the way to the House of Commons.

There were only 2 spaces available. Surbi had to write speech and was elected as the youngest member of the UKYP.



LET US KNOW!

We are always delighted to hear of our pupils' achievements outside of school. Please email info@edwardpeake.beds.sch.uk with any news you would like to update us on.

VALUES WINNER

JUNE

Here at Edward Peake, we highlight a different value each month.

Pupils and staff are nominated to receive an award for living the value of the month.

In June, our value was **Tolerance**.

Year 5 O. Baldock - For always being conderiate to all members of the school community in all aspects of school. Trying to ensure that she treats others fairly in a caring and compassionate manner.

Year 6 S. Vhiriri-Dziva - For always showing kindness and consideration to others and excellent manners towards staff.

Year 7 R. Nouri - For making such a great start in her new school, always showing kindness and consideration to others.

Year 8 M. Almustafa - For always showing kindness and respect to all others.

Staff - Mr Oduloju

JULY

In July, our value was **Dedication**.

Year 5 D. Scott - Being a dedicated member of choir all year, taking part in Matilda and taking part in Strafest and other out of school activities.

Year 6 F Hudson - Has demonstrated dedication to improving his work, collaborating with his peers and being a role model for Year 6. Thank you!

Year 7 A Gifkins - For always being dedicated in lessons, working hard and doing her best every day.

Year 8 S Bose - For being a dedicated member of the steel band and school orchestra.

Staff - S Thorn

Congratulations to all of our values winners!

BIG DRAW WINNERS

Year 5 - D Scott

Year 6 - H Graves

Year 7 - S Merridale

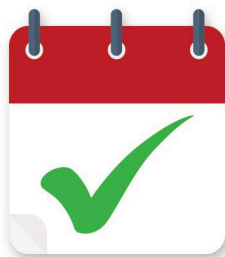
Year 8 - D Ndreu

EVERY SCHOOL DAY MATTERS



Penalty Notice Fines for absence from school are changing

From 19th August 2024 Penalty Notice fines increase to £160 for each parent, for each child.



You can be fined if your child has a total of 5 days of unauthorised absences in 10 school weeks, for things like:

- being late after the register has closed
- truancy
- taking a holiday without permission from the school
- or if a headteacher isn't satisfied for the reason for missing school

Over a rolling 3-year period the sanctions are:

- 1st offence – £160 reduced to £80 if paid within 21 days
- 2nd offence – £160
- 3rd offence – Court hearing and up to £2,500 fine, or up to 3 months in prison and a criminal record

For more information go to:
www.centralbedfordshire.gov.uk/missing-school





Bedfordshire

Fire & Rescue Service

 bedsfire.gov.uk
 Southfields Road
Kempston, Bedford
MK42 7NR
 bedsfirealert.co.uk
 @bedsfire

Water Safety - Quarries

Dear Parents and Guardians

As we are approaching the summer months following a particularly wet winter, I would like to provide some information and support in relation to water safety. Bedfordshire Fire & Rescue Service along with our partners including the Police and Local Authorities have recently been contacted by residents and business owners who are concerned for the safety of young people who are accessing quarries for leisure activities.

Unfortunately, accidental drownings happen all too frequently and even the strongest swimmers can find themselves in difficulties. There are also concerns for young and vulnerable people who may not be aware of the danger and risks that water poses.

Quarry water is normally far colder than river or sea water, and it can send your body into cold water shock or leave you too exhausted to swim within minutes of jumping in. The water is also often extremely deep, with steep drop offs, and shallow water can change to deep water quickly. Quarry water can also contain hazards such as entrapments, weeds, rubbish, drains, broken bottles and pollution.

The fire service is unable to stop people swimming outside or in open water, but if you have concerns of anti-social behavior, please report this to the Police non-emergency number on 101.

If someone is in trouble in the water and needs help in an emergency, please call 999.

Have a safe and enjoyable summer.

Kind Regards

Lauren McEvoy
Community Safety Officer
Bedfordshire Fire and Rescue Service



Hello
Summer

Mental Health Drop-In Service

by

CAMHS Bedfordshire's Community Access Services (CAS)

Summer Holidays can be hard without the usual routines and the support from school.

In August 2024, CAMHS CAS are offering a drop-in service to parents and carers of their children aged 5-18 who attend any Central Bedfordshire school to get advice and resources to support and promote positive mental health.



Please scan the QR code to reserve a space at our drop in or **contact our clinic on 01582 707635** and leave your contact details and we will return your call.

All Summer Drop in sessions will be held between **4pm – 6pm** on the following dates and venues below.

67 High Street North, Dunstable, Bedfordshire, LU6 3SD	Stratton Upper School, Eagle Farm Road, Biggleswade, SG18 8JB	Whichello's Wharf, The Elms, Stoke Road, Leighton Buzzard, Bedfordshire, LU7 2TD
Tuesday 30 th July 2024	Wednesday 31 st July 2024	Thursday 1 st August 2024
Tuesday 6 th August 2024	Wednesday 7 th August 2024	Thursday 8 th August 2024

A Level Results – Drop ins available at all venues on **Thursday 15th August 2024**

GCSE results – Drop ins available at all venues on **Thursday 22nd August 2024**

PLEASE NOTE THIS IS NOT A MENTAL HEALTH CRISIS SERVICE

If you or your child are experiencing a mental health crisis, please contact **NHS on 111 and press Option 2** for the Mental Health Crisis Line (all ages.) In an emergency, you can also **attend your local A&E and contact emergency services on 999**

YOUR SUMMER GUIDE TO POPULAR PLATFORMS


AN ONLINE SAFETY SHAREABLE



Messenger

An instant messaging app developed by Meta, popular for group chats, sharing images and videos. This app is also popular for playing games with friends. Can allow young people to connect with strangers, receive message requests from strangers and video call.


16+



Yubo

A live-streaming platform designed to help users "meet new people" from all around the world. There have been multiple reports of young people being harassed into sending sexualised or nude images and videos.

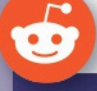
17+



WhatsApp

A popular messaging platform which allows group chats, video and audio calls. WhatsApp users have been subject to scams and malware spreading through the platform.


16+



Reddit

A platform which allows interactions through communities and discussion forums based on particular interests. There are no age verification systems for NSFW channels and can be easily bypassed to view inappropriate content. (NSFW forums are 18+)


13+



Kik

A mobile messaging app which allows one-to-one chatting, group chats and anonymous chats. Since Kik allows chatting with random strangers, it leaves children open to exploitation and grooming. Once messages are deleted, they cannot be retrieved.


16+



Telegram

A cross-platform messaging app which allows communication between individuals, small and large groups of up to 200,000 people. The ability to connect with others in the area may lead to young people to disclose locations and personal details that could lead to grooming or harassment in-person.

16+



Discord

An instant messaging social platform, in which people enter 'servers' so they are part of a group – commonly used for gaming communities. Some servers are NSFW (Not safe for work – often meaning inappropriate/adult content) and may have content age-inappropriate for younger users.


13+



Snapchat

A popular image sharing and messaging app that lets users exchange pictures and videos (snaps), with photo effects and filters, which disappear after a period of time. The 'disappearing snap' feature of Snapchat can lure young people into a false sense of security, and they may send images they would not normally send.


13+



Instagram

An image and video sharing app. Users can share content that followers can interact with by viewing, liking and commenting. Instagram may push a narrative of a 'perfect world' to young people, and they may feel pressured to post perfect, polished images of themselves.


13+



YouTube

A popular video sharing and social media platform. Videos can be commented on, liked and shared. Cyberbullying can occur through YouTube comments and age-inappropriate content may slip through moderation strategies deployed.

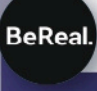
18+



TikTok

A free video sharing app which allows users to capture short video clips, share them and watch other user's videos or live streams. Age-inappropriate content which can be accessed through public feeds, especially any live streams. This may be unsuitable for young people and can be the origin of bullying trends.

13+



BeReal

A once-a-day photo sharing app – Users are given a 2-minute window to share a photo of themselves and their surroundings to their friends. If young people accept contacts they don't know, it is easy to build up a picture of routines in daily life, for example, school uniforms, bus stops and regular locations.

13+



Twitch

Twitch is a live streaming video platform which allows creators to broadcast and users to watch content, usually about games, including eSports. Twitch streams are often live and are therefore difficult to moderate.


13+



NETFLIX NOW Disney+

Streaming services which often involve paid subscriptions which offers a variety of TV shows, movies, gaming streams and more. Netflix shows such as 'Squid Game' and '13 Reasons Why' went viral and attracted the attention of young people, despite not being appropriate for under 18s. Parental controls which restrict access to age-inappropriate content e.g. profile PIN codes.

13+
16+
18+



Vault Apps (Decoys)

Apps which allow users to secretly hide photos, videos and files behind the premise of another app, for example a calculator which can only be accessed through a numeric pin code. Can become dangerous 'stashes' of youth produced sexual imagery.

17+

YOUR SUMMER GUIDE TO POPULAR GAMES

Rocket League

3

A videogame that bridges the gap between car racing, sport matches, and gladiator fights. Put simply, it's rocket-powered cars playing an intense game of football. Rocket League has a reputation for being a toxic environment for gamers with reports of offensive and inappropriate language filling text chats.

Fifa

3

A football simulation video game where gamers can choose to play as their favourite real-life footballers in their favourite real-life teams. FIFA is readily played by adults of all ages, meaning it would not be uncommon for a young person to interact with someone older.

Minecraft

7

An adventure game which allows players to explore and create worlds using building blocks to customise their worlds. Children and young people may experience addiction to the game due to its engaging nature.

Roblox

7

An online gaming and game creation platform. Users can play and create games for others to play. It also includes social features such as friend requests and chats where players can design an avatar and speak to others while they play. Roblox has previously faced criticism following harmful sexualised content being prevalent on the platform.

Among Us

7

An online multiplayer game which revolves around players attempting to figure out who is a friend and who is an enemy. Crewmates try to complete tasks while the imposter aims to sabotage the mission and kill them without being found out. Risk of talking to strangers through the chat feature however there is a chat-censor feature which can be turned on to prevent this.

Poppy Playtime

12

A horror game that involves an investigation of a mystery in an abandoned toy factory. You solve puzzles to survive the "vengeful toys" left behind including 'Huggy Wuggy'. Horror games containing frightening content can cause added anxiety and stress to young people, intrusive thoughts and new fears.

Fortnite

12

An online multiplayer "shooter style" game meaning players battle it out against opponents with multiple weapon styles. It allows players to create and personalise their own game components. Persuasive design features of the game can keep children hooked, encouraging them to spend in-game currency and add to their screen time.

Overwatch

12

A team-based game starring a cast of powerful heroes. Players can travel the world and build teams together. Overwatch has been included in eSports competitions and has scenes of blood, tobacco use and violence.

League of Legends

12

A team-based strategy game where two teams of five champions face off to destroy the other's base. Children may be exposed to bad language, hate speech, insults, and sexual language.

Apex Legends

16

A free-to-play shooter type game with the objective of being the last team standing by collecting loot and fighting enemy squads. It includes some violence and players may talk to others through voice and text chat.

Elden Ring

16

An action role-playing game in a world of different characters. You can explore the world, grow in strength and fight or ally those you meet. It features strong violence involving both human and fantasy characters, which can be deemed age-inappropriate for younger players

Grand Theft Auto

18

An action-adventure game in which players complete missions to progress through the story. Children will be subjected to profanity, violence, sex, crime and other mature themes.

Call of Duty

18

A series of first person shooter games including 'Modern Warfare', 'Black Ops', 'Vanguard' and 'Warzone'. Involves live user interaction – squads can be made up of friends or players from all over the world.



Horizon Worlds

NO RATING
18+

A virtual social space which consists of a catalogue of virtual experiences through the Metaverse. There have been several reported incidents of users experiencing sexual harassment while using the platform.

Avakin Life

NO RATING
18+

A virtual 3D gaming world where users create their own character by choosing outfits and interacting with others at different in-game locations. Users can easily access children and young people online via private and public chats.

THE LOCAL OFFER

This Local Offer sets out in one place what support and services are available for Children and Young People with Special Educational Needs and Disabilities (SEND).

The information will include how to access services and organisations for Children and Young People with SEND from birth to 25 years.

Our Local Offer has been designed and developed by a range of professionals from both Children's and Adult services including:

Education
Health
Social Care
SNAP Parent Carer Forum (PCF)
Voluntary and community groups

The Local Offer will include information on services that are available to support children and young people with Special Educational Needs and/or Disabilities (SEND) from birth to 25.

<https://localoffer.centralbedfordshire.gov.uk/kb5/centralbedfordshire/directory/about.page>



Central Bedfordshire SEND Local Offer

SAFEGUARDING

If you think a child you know is being harmed or at risk of being harmed, **please contact the Access and Referral Hub on 0300 300 8585**, who you can talk to about your concerns.

They will give you advice or may investigate the circumstances. All child protection calls are treated in confidence and you don't need to give your details.

Everyone has a responsibility to protect children from harm.

Out of hours: 0300 300 8123

Email: cs.accessandreferral@centralbedfordshire.gov.uk

Further support agencies can be found on our school website under the parents and pupil support section.

THANK YOU

We hope you have enjoyed our newsletters #TeamPeake.

Check out our careers page to learn more about how we support our learners for the future



Edward Peake Middle School
Potton Road
Biggleswade
SG18 0EJ

T: 01767 314562

E: careers@edwardpeake.beds.sch.uk
twitter.com/@CareersEP

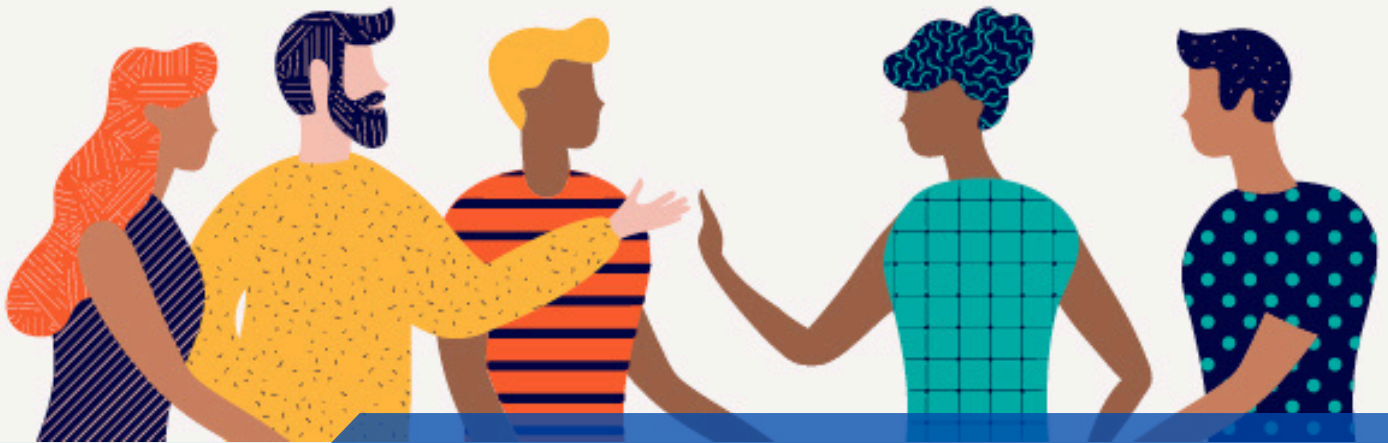
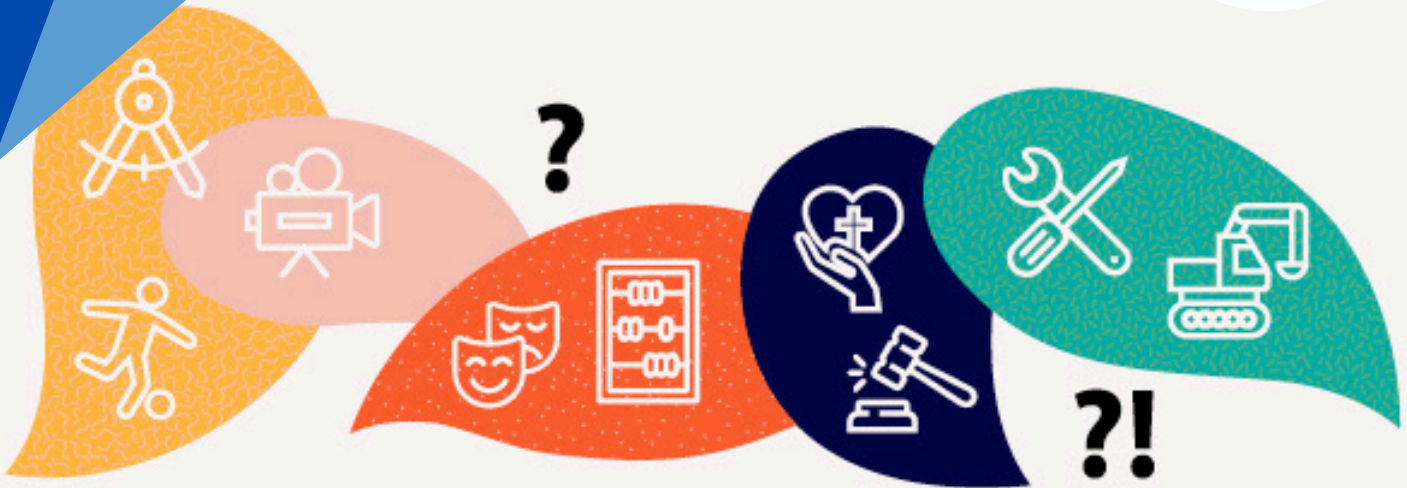
E: info@edwardpeake.beds.sch.uk

Check out our curriculum pages to learn more about how we support our learners for the future



www.edwardpeake.beds.sch.uk
twitter.com/@EdwardPeake





EDWARD PEAKE CAREERS NEWSLETTER JULY 2024

'LIVE, LOVE, LEARN'

"I WILL INSTRUCT YOU AND TEACH YOU IN THE WAY YOU SHOULD GO;
I WILL COUNSEL YOU WITH MY LOVING EYE ON YOU."

PSALM 32:8

Welcome

Welcome to our final careers newsletter of this academic year. This issue features a focus on careers in logistics and supply management as well as an insight into what we have in store next year.

Please do share this newsletter with your child as they will find helpful resources and information throughout.

We wish you a happy and restful summer break and look forward to seeing you in September.

Key Contacts

Whilst you can always talk to any member of staff regarding careers and careers provision at the school, it is useful to be aware of those people in school with specific responsibility for careers. We are a small but expanding team and you will see this list grow as we develop.

Careers leader: K Rodgers, Assistant Headteacher

Careers link governor: P Giles, Governor

Careers admin support: S Lee, Office manager

For specific information regarding curriculum areas and careers, please contact the relevant subject leader.

For careers specific information, advice, support or suggestions please email: careers@edwardpeake.beds.sch.uk

Get Involved

We are always looking for volunteers to come in and speak to pupils about their experience of work and how they chose the career they did. If you would like to offer some time to come and speak to or work with pupils in school please email the school via:

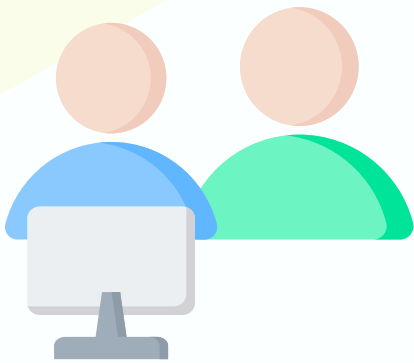
careers@edwardpeake.beds.sch.uk

CAREERS PROGRAMME

2024-2025

We have some exciting events lined up next academic year to help develop and extend our pupils knowledge of different career paths and the world of work. These events will compliment our careers programme that is delivered through our life skills lessons.

Details of some of these events are outlined below.



Some of our pupils will get the chance to undertake work shadowing. This will be a great opportunity for pupils to get an insight into the workplace and meet employers and employees.

Dell Technologies will be coming in to run a workshop with pupils to learn more about the social issues that affect their community and how technology can be used to help. They will develop transferable skills and develop their creativity and teamwork skills.



The Rise Initiative will be working alongside volunteers from companies such as KPMG, Price Waterhouse Copper and Grant Thornton to deliver workshops to pupils that help pupils to realise the skills they already have and how they can develop these in school to reach their potential.

We will host our first ever careers fair. This will be an opportunity for all of our pupils to meet representatives from different sectors, careers and further education institutions. They will be able to ask questions and get some top tips from the experts.

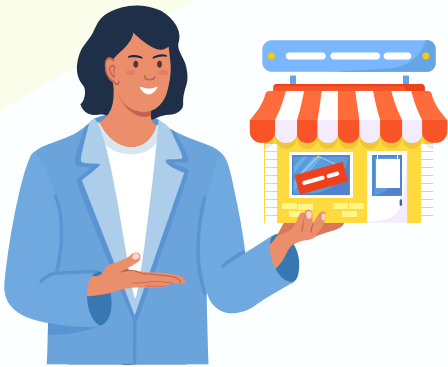


CAREERS PROGRAMME

2024-2025

We have some exciting events lined up next academic year to help develop and extend our pupils knowledge of different career paths and the world of work. These events will compliment our careers programme that is delivered through our life skills lessons.

Details of some of these events are outlined below.



Our enterprise sessions will help pupils to develop their problem solving, team work and presentation skills. We have a number of volunteers from our school community who are supporting out pupils with this project.

Pupils in Key Stage 3 will be using a new programme called Unifrog from September. It will help pupils to explore different careers as well as keep a track of experiences they have gained. Parents will also be given resources to help them explore the Unifrog system.

unifrog

CAREERS AT EDWARD PEAKE

Please take a look at the careers section of our school website where you will find a plethora of resources and information.

If there is any information that you feel would be of benefit to your or your child then please email careers@edwardpeake.beds.sch.uk so that we can make this available to you via our newsletter, email or our school website.

Industry Spotlight: Logistics and Supply Chain



Logistics is often an overlooked and misunderstood career path. It also happens to be one of the fastest growing sectors in our local area. So what is logistics? It is getting something from A to B but it's not just the journey, it's all the things it takes to make the journey happen. The planning, the scheduling, the vehicles, the routes, the quantity, the quality and most importantly, the people and skills needed to move things.

The National Careers Service is an excellent starting point to find out more:

<https://nationalcareers.service.gov.uk/job-categories/delivery-and-storage>

Working in logistics and supply chain management has many varied roles. Some are centred around working with people such as customer care, human resources and working customs both here and abroad. Others involve physically working with goods such as warehousing, transportation and infrastructure. With so much trade being conducted worldwide, a career in logistics could literally take you any where.

Key skills required:

Adaptable	Problem solving
Attention to detail	Self motivated
Customer focused	Team player
Good communication skills	Negotiation and influencing skills

Logistics is an area where the impacts are real every single day. This sector has a history of promoting from within and lots of training takes place in role. That being said you can give yourself a head start by looking at the routes into the sector.

From apprenticeships, summer internships, placements and graduate schemes, there are lots of options to get you started. A useful resource to find out more and choose the path that is right for you, can be found here:

<https://generationlogistics.org/find-your-path/>

Useful resources:

<https://generationlogistics.org/find-your-future/>
<https://www.prospects.ac.uk/jobs-and-work-experience/job-sectors/transport-and-logistics>

Industry Spotlight



South East
Midlands
CAREERS HUB

LOGISTICS & SUPPLY CHAIN

AVERAGE ADVERTISED SALARY

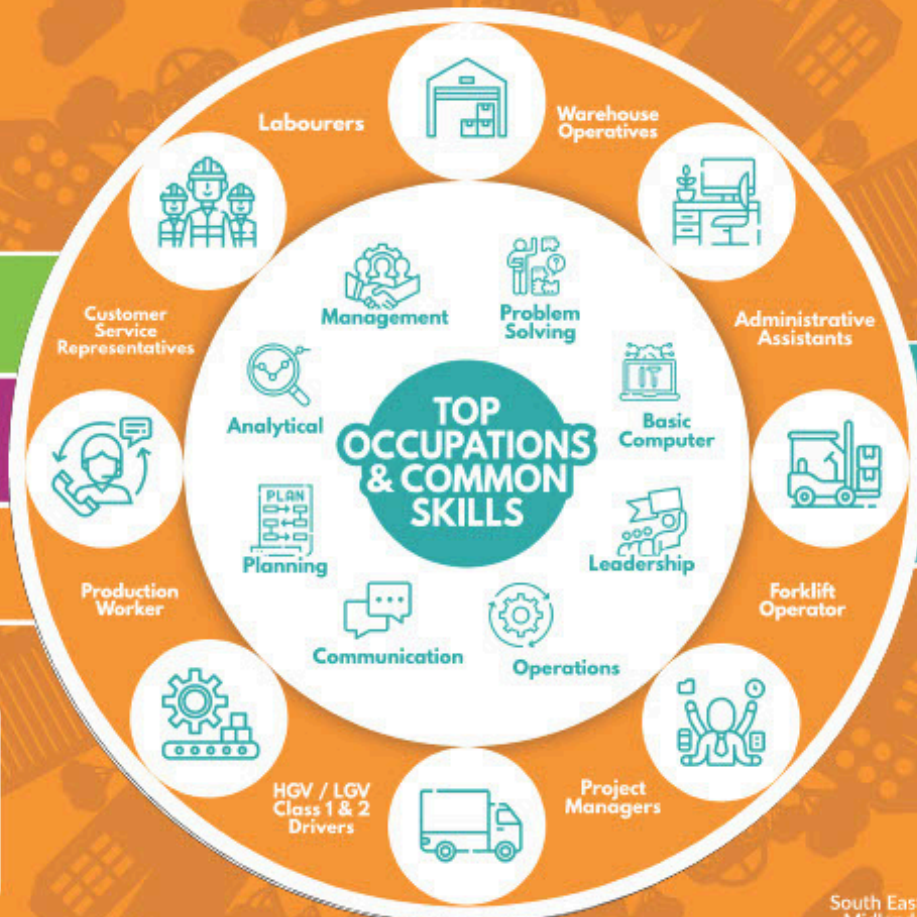
£29,000

NUMBER OF
PEOPLE EMPLOYED

139,000

EXPECTED GROWTH

26%



SCAN ME



NetworkRail



**SAVE
THE
DATE!**

**CAREERS
EVENT
2024**

**9th & 10th November 2024
10:30am - 3:00pm
The Quadrant: Milton Keynes**



www.networkrail.com



THANK YOU

We hope you have enjoyed our first careers newsletter #TeamPeake.

Check out our careers page to learn more about how we support our learners for the future



Edward Peake Middle School
Potton Road
Biggleswade
SG18 0EJ

T: 01767 314562

E: careers@edwardpeake.beds.sch.uk

www.edwardpeake.beds.sch.uk

[twitter.com/@CareersEP](https://twitter.com/CareersEP)

