



EDWARD PEAKE AUTUMN NEWSLETTER

'LIVE, LOVE, LEARN'

"I WILL INSTRUCT YOU AND TEACH YOU IN THE WAY YOU SHOULD GO;
I WILL COUNSEL YOU WITH MY LOVING EYE ON YOU."

PSALM 32:8

Key Dates

Tuesday 31 October

Pupils return from half term

Tuesday 31 October

Flu clinic all years

Friday 17 November

Children In Need

Saturday 9 December

Eco Christmas Fayre

Wednesday 13 December

KS2 Film night

Tuesday 19 December

Christmas Jumper Day
Christmas Dinner
Christmas Service
Last day of term

Term Dates 2023 – 2024

School Holiday 

Bank Holiday 

Pupil Day 

Training Day 

September 2023					October 2023					November 2023					December 2023										
Mon		4	11	18	25	Mon		2	9	16	23	30	Mon		6	13	20	27	Mon		4	11	18	25	
Tue		5	12	19	26	Tue		3	10	17	24	31	Tue		7	14	21	28	Tue		5	12	19	26	
Wed		6	13	20	27	Wed		4	11	18	25	Wed		1	8	15	22	29	Wed		6	13	20	27	
Thu		7	14	21	29	Thu		5	12	19	26	Thu		2	9	16	23	30	Thu		7	14	21	28	
Fri		1	8	15	22	29	Fri		6	13	20	27	Fri		3	10	17	24	Fri		1	8	15	22	29
Sat		2	9	16	23	30	Sat		7	14	21	28	Sat		4	11	18	25	Sat		2	9	16	23	30
Sun		3	10	17	24	Sun	1	8	15	22	29	Sun		5	12	19	26	Sun		3	10	17	24	31	

January 2024					February 2024					March 2024					April 2024										
Mon		1	8	15	22	29	Mon		5	12	19	26	Mon		4	11	18	25	Mon		1	8	15	22	29
Tue		2	9	16	23	30	Tue		6	13	20	27	Tue		5	12	19	26	Tue		2	9	16	23	30
Wed		3	10	17	24	31	Wed		7	14	21	28	Wed		6	13	20	27	Wed		3	10	17	24	
Thu		4	11	18	25	Thu		1	8	15	22	29	Thu		7	14	21	28	Thu		4	11	18	25	
Fri		5	12	19	26	Fri		2	9	16	23	Fri		1	8	15	22	29	Fri		5	12	19	26	
Sat		6	13	20	27	Sat		3	10	17	24	Sat		2	9	16	23	30	Sat		6	13	20	27	
Sun		7	14	21	28	Sun		4	11	18	25	Sun		3	10	17	24	31	Sun		7	14	21	28	

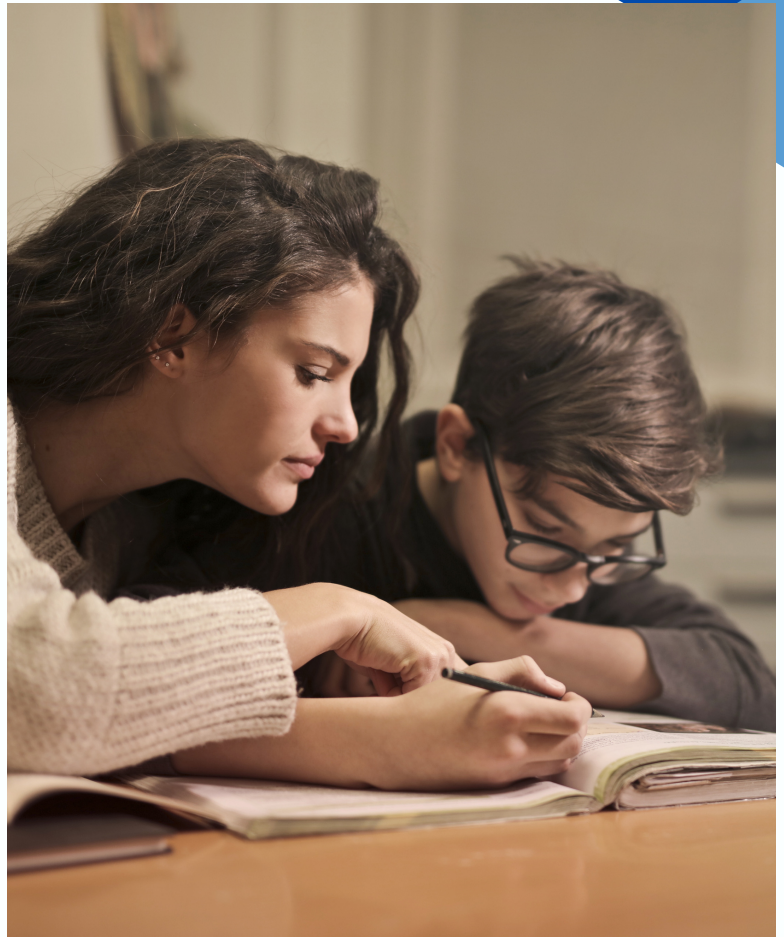
May 2024					June 2024					July 2024					August 2024										
Mon		6	13	20	27	Mon		3	10	17	24	Mon		1	8	15	22	29	Mon		5	12	19	26	
Tue		7	14	21	28	Tue		4	11	18	25	Tue		2	9	16	23	30	Tue		6	13	20	27	
Wed		1	8	15	22	29	Wed		5	12	19	26	Wed		3	10	17	24	31	Wed		7	14	21	28
Thu		2	9	16	23	30	Thu		6	13	20	27	Thu		4	11	18	25	Thu		1	8	15	22	29
Fri		3	10	17	24	31	Fri		7	14	21	28	Fri		5	12	19	26	Fri		2	9	16	23	30
Sat		4	11	18	25	Sat		1	8	15	22	29	Sat		6	13	20	27	Sat		3	10	17	24	31
Sun		5	12	19	26	Sun		2	9	16	23	30	Sun		7	14	21	28	Sun		4	11	18	25	

HOMEWORK

Homework is now being set via ClassCharts. This means that you will be able to view any homework set for your child/ren and whether or not it has been completed. This can be done in a number of ways.

When using the ClassCharts app, you can select the homework tab at the top of the screen. This will then display any homework that has been assigned to your child. You can rearrange the order of the homework set by selecting either the issue date or the due date button.

You can also view set homework via our school website:
<https://www.edwardpeake.beds.sch.uk/p/parents/homework/>



EXTRA CURRICULAR CLUBS

We offer a range of extracurricular activities which give your child the opportunity to engage socially and further enrich their studies. Clubs change termly and are updated on our website.

	KS2 Lunch 12:25- 1:05	KS3 Lunch 12:40- 1:20	After School 3:20 – 4:20 (Please note that a consent form must be returned prior to your child attending after school clubs. Additional letters and consent forms will be given out before any matches or off site visits)
Monday			
Tuesday	KS2 Netball Club - sportshall (AW & sports leaders)	ICT club	Steel Band - main hall (ST) - permission needed limited places. KS3 Girls Rugby club (AC) KS2 football (JN) Fixture evening (AC)
Wednesday	Choir S5 (ST)	Choir S5 (ST) ICT club	Fixture Evening (AC)
Thursday	Orchestra E1 (ST) Green Guardians (formerly Plastic Free Club) Z1 (NB)	Orchestra E1 (ST) ICT club Green Guardians (formerly Plastic Free Club) Z1 (NB) Board Game club KS3 E4 apply to Mr Wells (LW)	KS3 Netball - Courts (good weather)/ Sportshall (inclement weather) (AW) KS3 Boys Rugby (AC) Fixture Evening (AC)
Friday	Press Club 12:40-1:05 Library (NB)	ICT club Press Club 12:40-1:05 Library (NB)	



ARRIVING ON TIME

Parents are reminded that pupils need to arrive at school between 8:30am and 8:40am every day.

DROP OFF & PICK UP

Parents are reminded that access to the school site at the beginning or the end of day is extremely limited. If you feel that there are special circumstances that mean you need to come on site at the beginning or the end of the day, please email info@edwardpeake.beds.sch.uk. This will then be reviewed within three days.

PARKING OFF SITE

As there is extremely limited parking on site, you will need to park your car on public roads when dropping off or collecting your child. Please remember to always park safely and considerately.

SCOOTERS & BIKES

We have a large number of pupils that bike and scoot to school and many of these items are the same brand and colour. Please ensure that you name these items so that in the event that they are mixed up we can reunite them with their owners.





GOING SECONDARY

From September 2024 Edward Peake will begin the transition from a middle school setting to a secondary school setting as part of the Central Bedfordshire Schools for the Future program.

My child/ren is currently in year 8 will I need to apply for a place?

No, you will not need to apply for a place. Our current year 8's will stay at Edward Peake and transition into year 9 staying with us until the end of year 11.

Will there be a new uniform ?

Yes we will be implementing a new uniform, but we will strive to keep the cost to parents as low as possible.

Will you have any new facilities?

Yes! Our initial additions will consist of a brand-new technology block, a 50 x 100m MUGA (multi-use games area) and a fabulous Sports Hall with an Activity Studio.

What will the new curriculum be like?

Our children will focus on a core curriculum, with additional options available during their GCSE years.

Will I be able to contribute my views?

Yes! We are seeking the views of all members of our school community on changes that will be necessary when we become a secondary school. We feel it is important that these changes are made in partnership with our community and invite your suggestions via the form below. <https://forms.gle/vzJ2XdXKTZBw6gAU9>



STAFF & PUPIL ACHIEVEMENTS

AMY TURNER

Amy dives at Beaumont Diving Academy. She has been diving since she was 8 years old. Amy's favourite pool is the London Olympic Pool where she competed for regionals to qualify for Nationals placing 4 out of 32 girls. Amy had to score above 270, and managed 283.

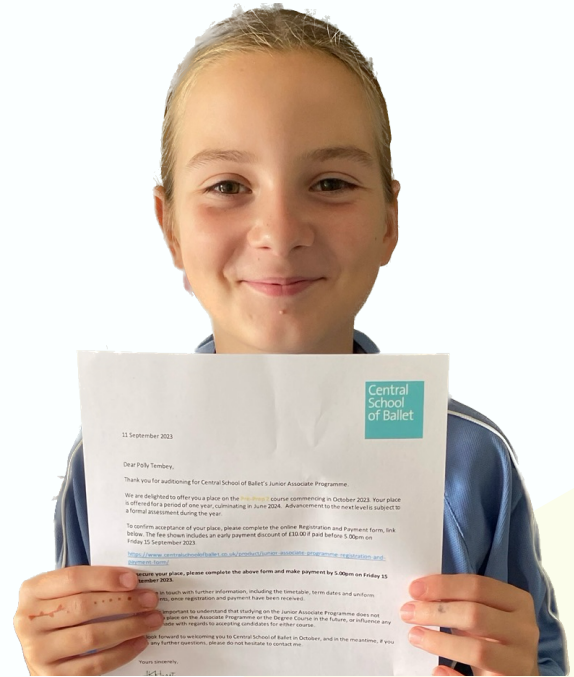
She was invited to compete at Nationals representing Swim England in July in Leeds. Amy placed 22nd out of 31 girls. Amy is the 22nd best skills diver in England. Amy is able to perform 1 1/2 somersaults from a board of 5m as well as reverse dives. Fun fact she also collects some very expensive diving shirts.



POLLY TEMBY

Polly dances with Emily Thornton School Of Dance in Biggleswade and auditioned at the Central School of Ballet in London. The audition was for a new Junior Associate Programme for 8-11 year olds.

The programme is only 6 Saturdays across the year is designed to help aspiring dancers. The programme includes Ballet, Body Conditioning & Creative Movement. On the day, Polly enjoyed classes led by teachers from the Associate Programme at the school and also performed an improvised solo piece. The following day, Polly received an offer of a place on the Junior Associate Programme which commences this month.



JASMINE BALDWIN

Jasmine has worked really hard in her swimming lessons and has recently achieved her 1-mile swim.

LET US KNOW!

We are always delighted to hear of our pupils' achievements outside of school. Please email info@edwardpeake.beds.sch.uk with any news you would like to update us on.

STAFF & PUPIL ACHIEVEMENTS



SNOWDON

On Saturday 2 September Mr Carter, Mrs Ranger, Mrs Pearce, Miss Bell, Mr Duffy and Mrs Weedon climbed Snowdon raising money for a new mini bus. Why? Firstly our bus really wants to retire, but most importantly, as the school transitions into a Secondary School we aim to offer the pupils a chance to do their Duke of Edinburgh (DofE) Award. So, to (mis)quote Chief Brody "we're going to need a better bus"

You can donate via the school gateway.

ECO CLUB

On Thursday 28 September 15 pupils set off to Whipsnade Zoo as their prize for winning the Central Bedfordshire Council Eco-Schools Marine Award in December 2022. The students, who attend Eco Club or Plastic Free Schools, have been working hard each week to achieve the accreditations and thoroughly deserved their prize which involved a workshop focussing on how climate change is affecting animals and a Q&A with a zookeeper. Pupils were able to see all of the animals in the zoo and enjoyed a talk about lemurs as well as admiring the view over the Dunstable Downs.



Value Certificates

Here at Edward Peake, we highlight a value each month. In September, it was **courage**. Well done to this month's winners.

Year 5 S. Jobari - Overcoming challenges to learn, being positive and making new friends.

Year 6 C. Waltham - Willing to try new tasks and challenges and being positive towards his learning.

Year 7 Z Johnson - For maintaining her excellent effort and work levels and remaining positive.

Year 8 F Sadler - For her hard work, effort and positivity in school.

Staff - Mr Carter, Miss Bell, Mrs Ranger, Mr Duffy, Mrs Pearce, Mrs Weedon

PUPIL ARTICLES

The New Beginnings service was an event to welcome all Year 5 pupils and parents of their new school, Edward Peake. In the service, there was lots of singing, even singing a prayer. It was a momentous occasion for everyone. A new Year 5, a new beginning, a new life, everyone in new classes. The New Beginnings service was just a taste of Edward Peake. More will come in later stages, but for now, it's about a new beginning.

R. Joyce, Year 5.



Our current English book is The London Eye Mystery by Siobhan Dowd. Each Friday, big writes are completed and/or spelling tests are conducted. In science, we are learning about the circulatory system. In PSHCE, we are learning about relationships. In music, we are looking at notes on the staff and building up to doing piano/keyboard work. We are looking at the Tudors in history, the UK in geography, and in RE, we are thinking about our community. **C Eldrett, Year 6.**



This school year so far we have met our new form teachers and met our new classmates. In October we will be going on a Residential to Shropshire Manor Adventure. In Shropshire, we will be doing different activities, making new friends and trying new things.

E. Joyce, Year 7

In year 8 I really like creativity where we get to do different subjects each term. At the moment we are doing cookery and we have already made cheesecake which is my favourite. In creativity, we also get to do community where we can help with Movie Night and work together to improve things in school. As a year 8, we get to work with teachers improving and working with our school community with sports leaders, young leaders, wellbeing ambassadors and much more.

C Cuzner, Year 8

THANK YOU

We hope you have enjoyed this months newsletter #TeamPeake.

Check out our curriculum pages to learn more about how we support our learners for the future



Edward Peake Middle School
Potton Road
Biggleswade
SG18 0EJ

T: 01767 314562

E: info@edwardpeake.beds.sch.uk

www.edwardpeake.beds.sch.uk

twitter.com/@EdwardPeake

